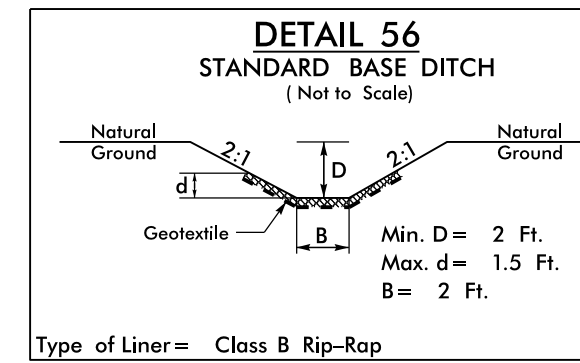
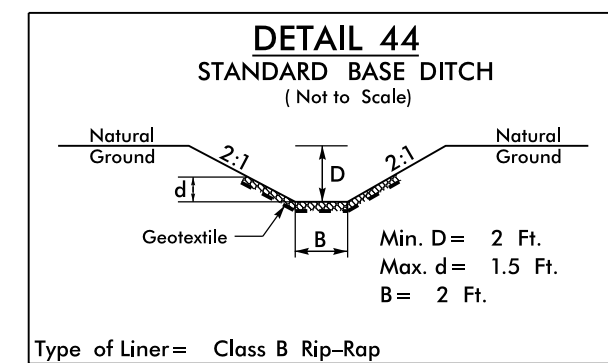
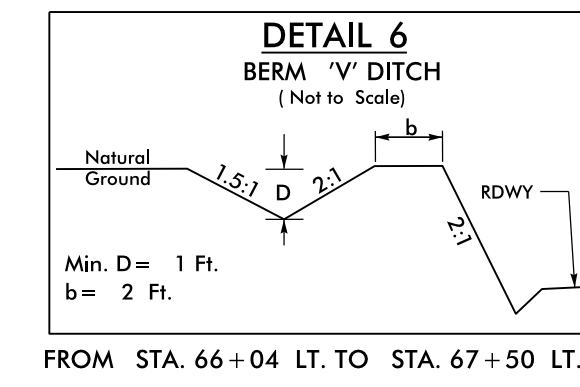
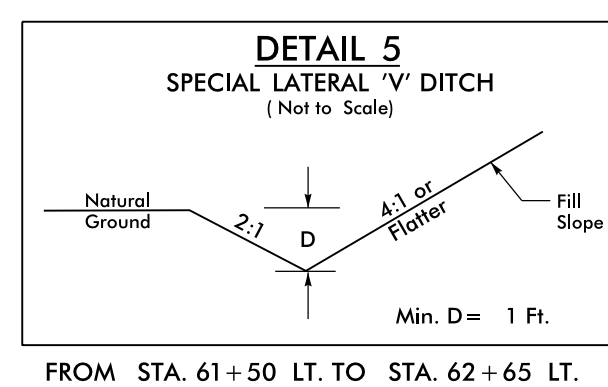
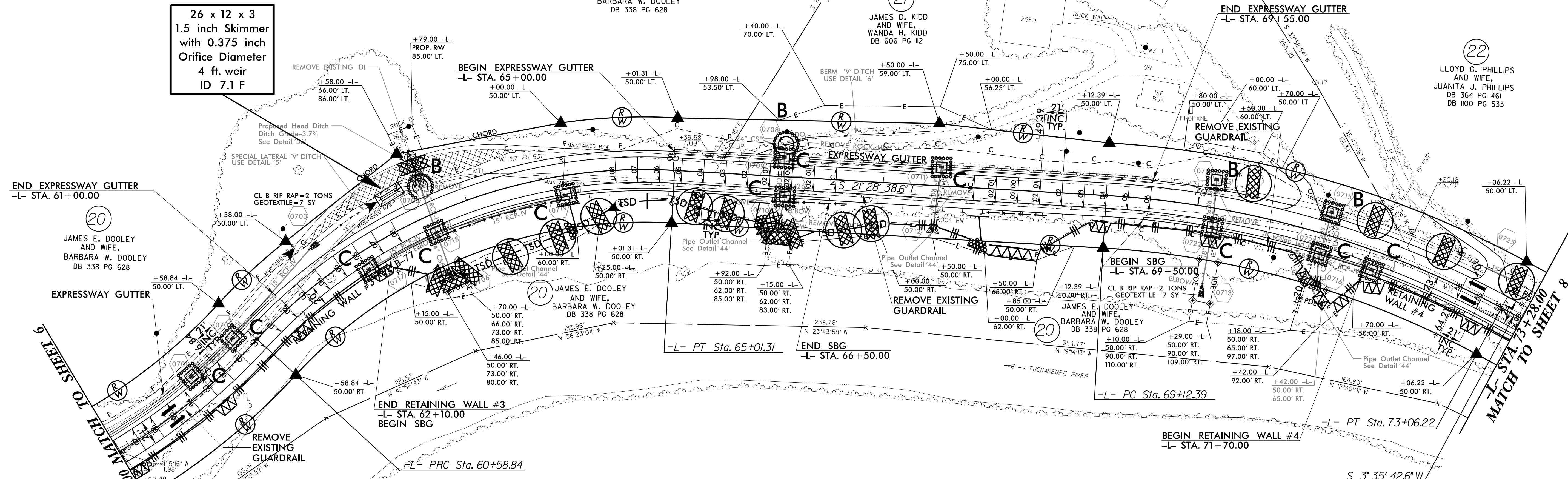


-L-		
PI Sta 57+94.02	PI Sta 62+95.74	PI Sta 71+12.51
$\Delta = 56' 24" 55.1" (LT)$	$\Delta = 50' 42" 11.3" (RT)$	$\Delta = 25' 04" 21.2" (RT)$
$D = 9' 41" 56.1"$	$D = 11' 27" 31.5"$	$D = 6' 21" 58.3"$
$L = 581.67'$	$L = 442.48'$	$L = 393.84'$
$T = 316.86'$	$T = 236.91'$	$T = 200.12'$
$R = 590.74'$	$R = 500.02'$	$R = 900.00'$
	$SE = .08$	$SE = .06$
	$RO = 168'$	$RO = 126'$

Place Matting for Erosion Control on All Slopes as Work Allows.

NAD 83/NSRS 2007



- Type of Liner = Class B Rip-Rap
- STA. 62+58 RT. (Pipe Outlet)
 - 5 CY DDE, 14 SY Geotextile
 - 5 Ton Class B Rip-Rap
 - STA. 66+03 RT. (Pipe Outlet)
 - 5 CY DDE, 14 SY Geotextile
 - 5 Ton Class B Rip-Rap
 - STA. 67+50 RT. (Pipe Outlet)
 - 5 CY DDE, 14 SY Geotextile
 - 5 Ton Class B Rip-Rap
 - STA. 71+30 RT. (Pipe Outlet)
 - 5 CY DDE, 14 SY Geotextile
 - 5 Ton Class B Rip-Rap

- Type of Liner = Class B Rip-Rap
- STA. 62+65 LT. (Head Ditch)
 - 15 CY DDE
 - 20 Ton Class B Rip-Rap
 - 55 SY GEOTEXTILE

Note: All Driveway Radii are 20' Unless Otherwise Noted
 Note: All Proposed Guardrail to Use Weathered Steel Unless Otherwise Noted

BDO = BERM DITCH OUTLET
 SBG = SHOULDER BERM GUTTER
 SEE SHEETS 20 & 21 FOR -L- PROFILE
 SEE SHEETS W-1 THRU W-8 FOR RETAINING WALL PLANS