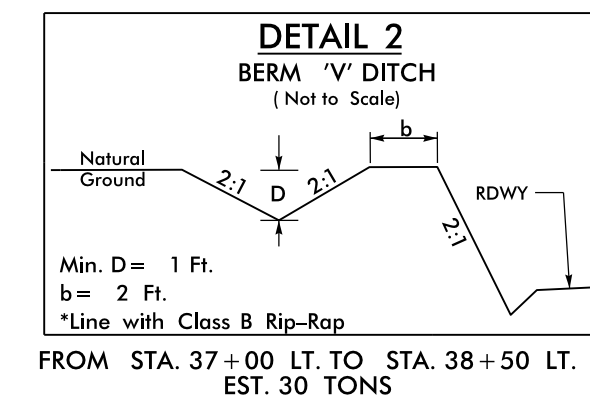
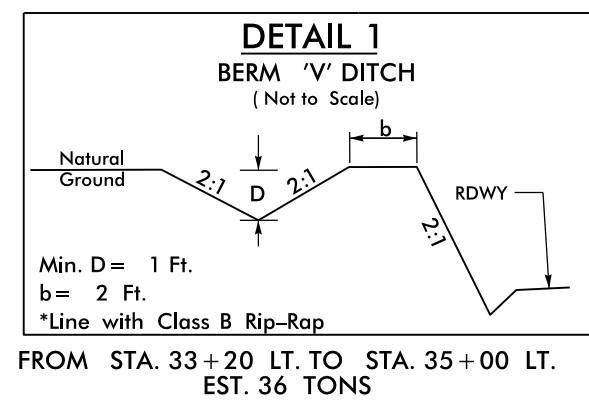
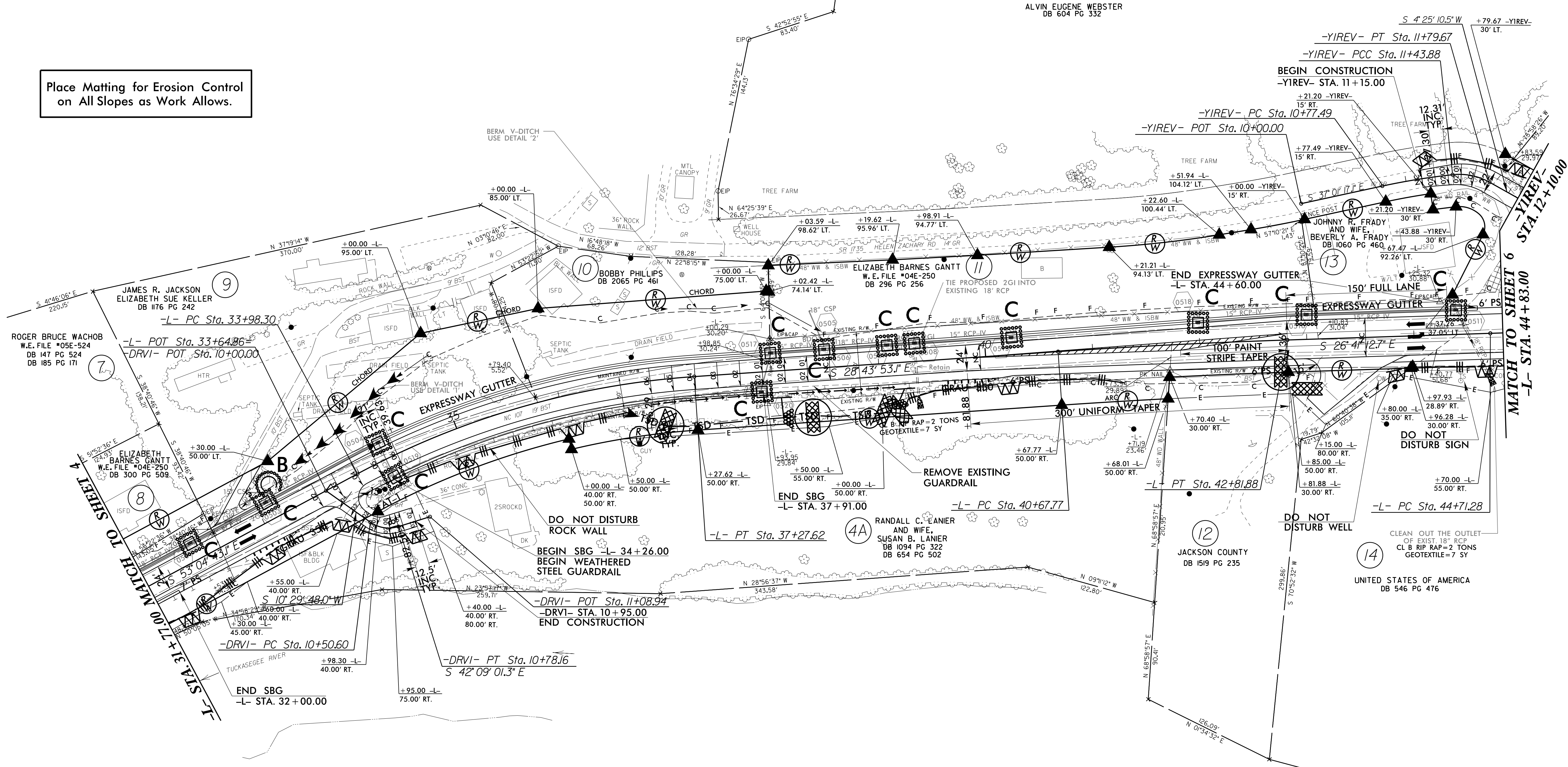


PROJECT REFERENCE NO. R-4753	SHEET NO. EC-23/CONST.5
RW SHEET NO.	
ROADWAY DESIGN ENGINEER	HYDRAULICS ENGINEER

-L-			-YIREV-		-DRV1-
PI Sta 35+65.48	PI Sta 41+74.84	PI Sta 46+68.49	PI Sta 11+10.71	PI Sta 11+62.36	PI Sta 10+65.44
$\Delta = 24^{\circ} 20' 50.0"$ (RT)	$\Delta = 2^{\circ} 02' 40.4"$ (RT)	$\Delta = 2^{\circ} 49' 27.3"$ (RT)	$\Delta = 6^{\circ} 05' 10.8"$ (RT)	$\Delta = 35^{\circ} 21' 16.8"$ (RT)	$\Delta = 52^{\circ} 38' 49.3"$ (LT)
D = 7' 23' 34.8"	D = 0' 57' 17.7"	D = 0' 42' 58.3"	D = 9' 10' 02.4"	D = 98' 47' 09.0"	D = 190' 59' 09.4"
L = 329.33'	L = 214.11'	L = 394.34'	L = 66.39'	L = 35.79'	L = 27.57'
T = 167.19'	T = 107.06'	T = 197.21'	T = 33.23'	T = 18.48'	T = 14.84'
R = 775.00'	R = 6,000.00'	R = 8,000.00'	R = 625.00'	R = 58.00'	R = 30.00'
SE = .06	SE = NC	SE = NC		SE = EXIST.	
RO = 126'					

NAD 83/NSRS 2007

Place Matting for Erosion Control on All Slopes as Work Allows.



BDO = BERM DITCH OUTLET
SBG = SHOULDER BERM GUTTER
PROP. PAINT STRIPING
SEE SHEETS 19 & 20 FOR -L- PROFILE
SEE SHEET 26 FOR -YIREV- PROFILE
SEE SHEET 29 FOR -DRV1- PROFILE

Note: All Driveway Radii Are 20' Unless Otherwise Noted
Note: All Proposed Guardrail to Use Weathered Steel Unless Otherwise Noted

5/14/99
12-SEP-2016 17:31
RA:\cmm\m\p\ec\4753\EC-23\CONST.5.dgn
UT