

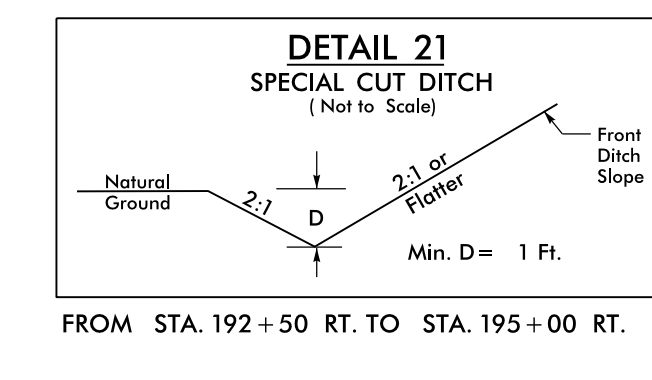
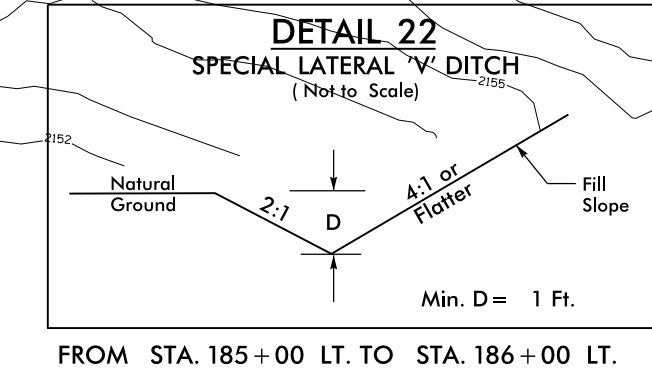
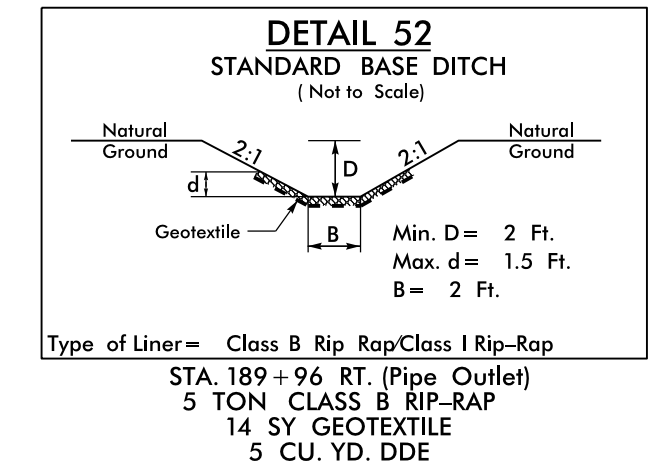
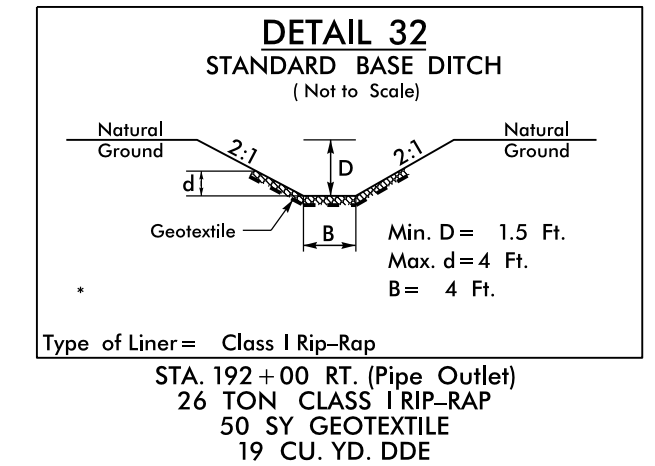
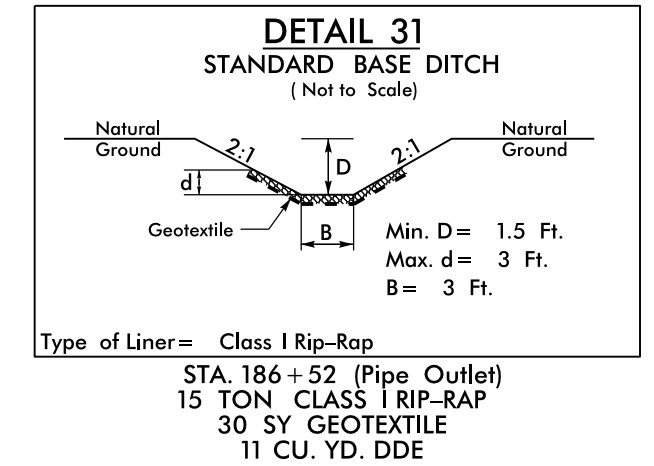
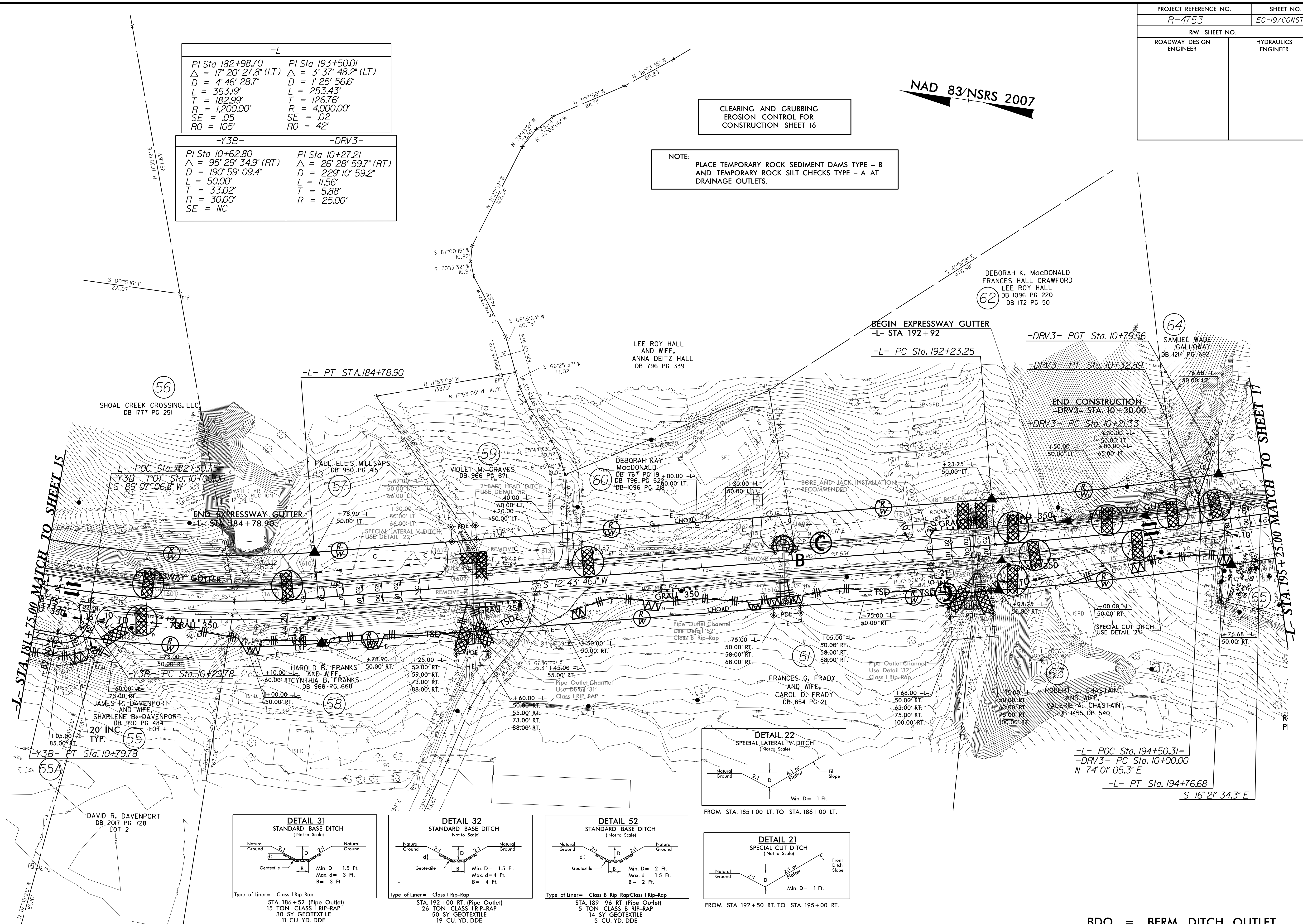
PROJECT REFERENCE NO.	SHEET NO.
R-4753	EC-19/CONST.16
RW SHEET NO.	
ROADWAY DESIGN ENGINEER	HYDRAULICS ENGINEER

-L-		
PI Sta 182+98.70 Δ = 17° 20' 27.8" (LT) D = 4' 46' 28.7" L = 363.19' T = 182.99' R = 1,200.00' SE = .05 RO = 105'	PI Sta 193+50.01 Δ = 3° 37' 48.2" (LT) D = 1' 25' 56.6" L = 253.43' T = 126.76' R = 4,000.00' SE = .02 RO = 42'	
-Y3B-		
PI Sta 10+62.80 Δ = 95° 29' 34.9" (RT) D = 190' 59' 09.4" L = 50.00' T = 33.02' R = 30.00' SE = NC	-DRV3-	
PI Sta 10+27.21 Δ = 26° 28' 59.7" (RT) D = 229' 10' 59.2" L = 11.56' T = 5.88' R = 25.00'		

CLEARING AND GRUBBING
EROSION CONTROL FOR
CONSTRUCTION SHEET 16

NOTE:
PLACE TEMPORARY ROCK SEDIMENT DAMS TYPE - B
AND TEMPORARY ROCK SILT CHECKS TYPE - A AT
DRAINAGE OUTLETS.

NAD 83/NSRS 2007



BDO = BERM DITCH OUTLET
SEE SHEETS 24 & 25 FOR -L- PROFILE
SEE SHEET 28 FOR -Y3B- PROFILE
SEE SHEET 29 FOR -DRV3- PROFILE

Note: All Driveway Radii are 20' Unless Otherwise Noted
Note: All Proposed Guardrail to Use Weathered Steel Unless Otherwise Noted

5/14/99
05-SEP-2016 15:13
R:\E:\psh16.dgn
L:\E:\psh16.dgn