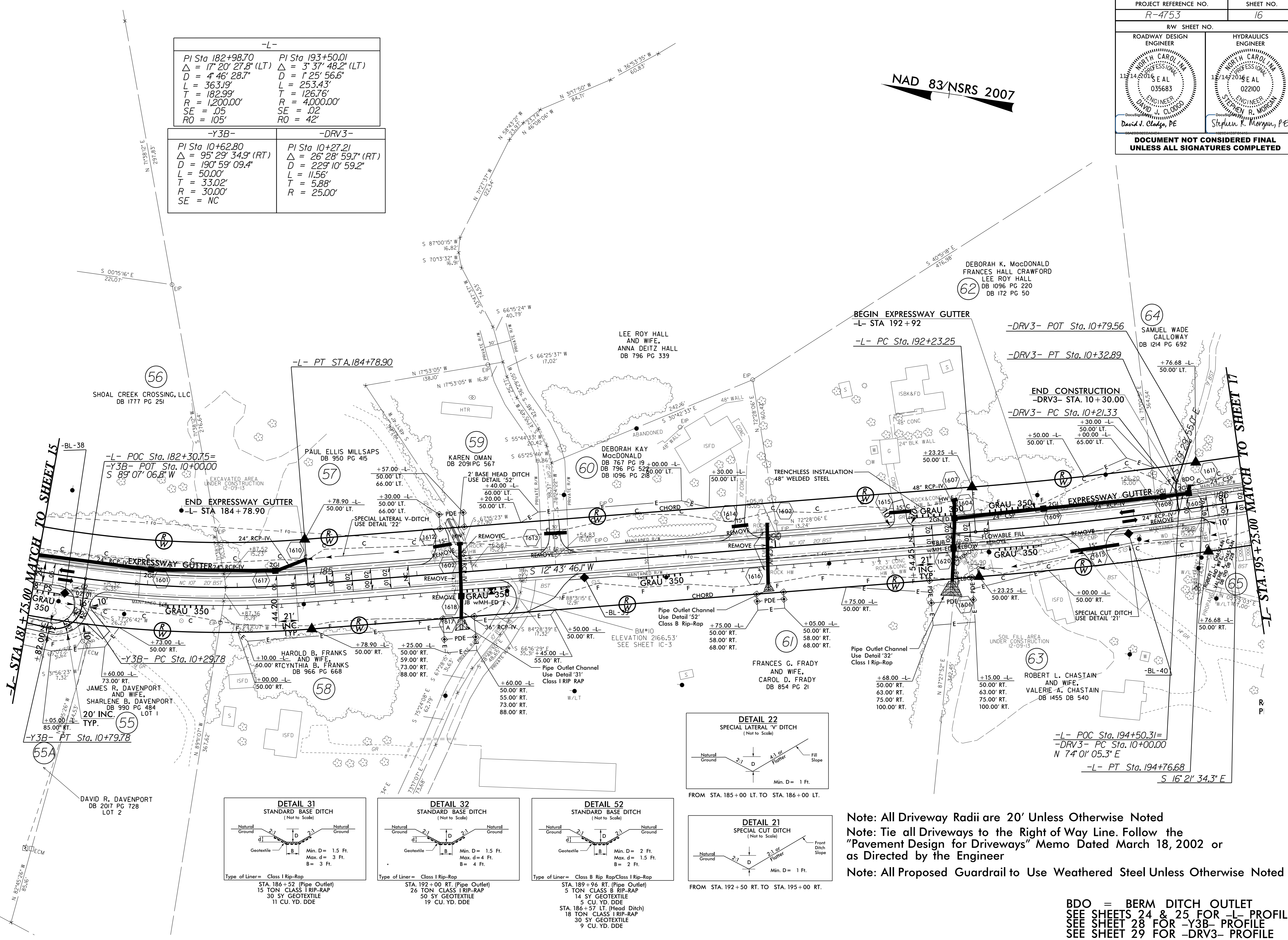


PROJECT REFERENCE NO. R-4753		SHEET NO. 16	
RW SHEET NO.			
ROADWAY DESIGN ENGINEER		HYDRAULICS ENGINEER	
DOCUMENT NOT CONSIDERED FINAL UNLESS ALL SIGNATURES COMPLETED			

NAD 83/NSRS 2007

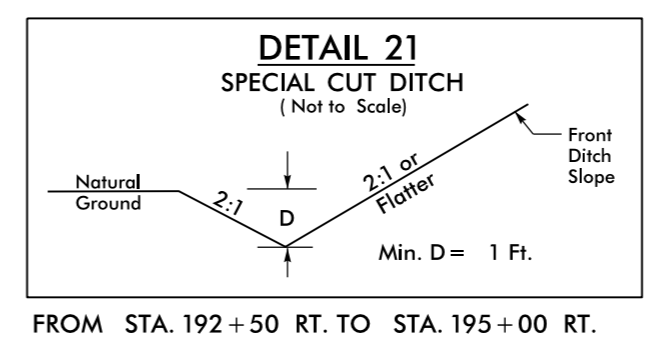
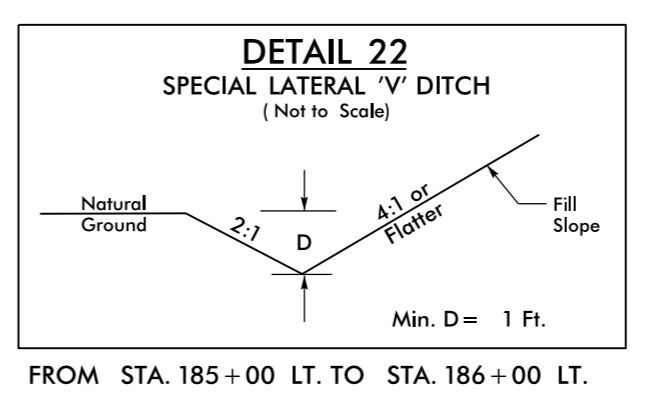
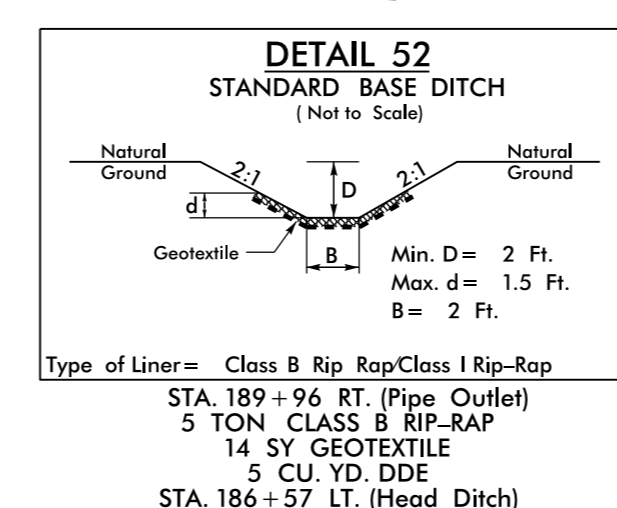
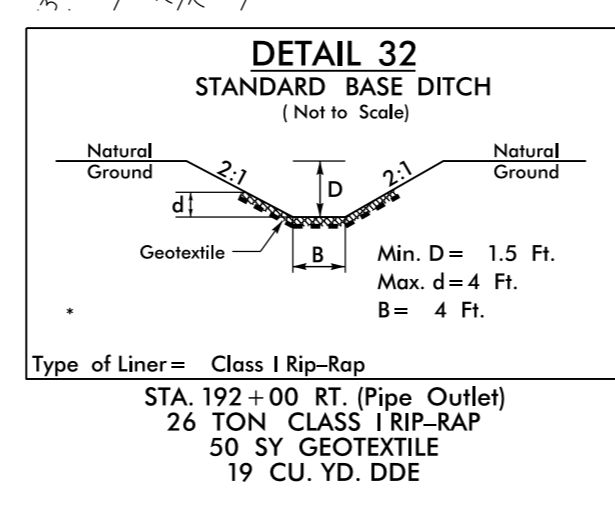
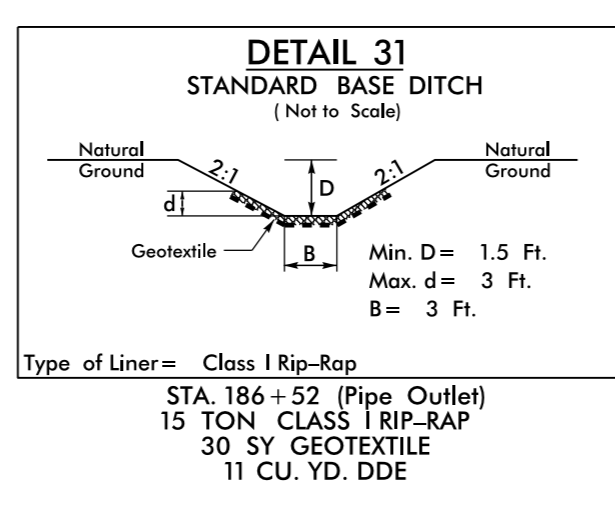
-L-	
PI Sta 182+98.70 Δ = 17° 20' 27.8" (LT) D = 4' 46' 28.7" L = 363.19' T = 182.99' R = 1,200.00' SE = .05 RO = 105'	PI Sta 193+50.01 Δ = 3° 37' 48.2" (LT) D = 1' 25' 56.6" L = 253.43' T = 126.76' R = 4,000.00' SE = .02 RO = 42'
-Y3B-	-DRV3-
PI Sta 10+62.80 Δ = 95° 29' 34.9" (RT) D = 190' 59' 09.4" L = 50.00' T = 33.02' R = 30.00' SE = NC	PI Sta 10+27.21 Δ = 26° 28' 59.7" (RT) D = 229' 10' 59.2" L = 11.56' T = 5.88' R = 25.00'



REVISIONS

-L- STA 181 + 75.00 MATCH TO SHEET 15

-L- STA 195 + 25.00 MATCH TO SHEET 17



Note: All Driveway Radii are 20' Unless Otherwise Noted
 Note: Tie all Driveways to the Right of Way Line. Follow the "Pavement Design for Driveways" Memo Dated March 18, 2002 or as Directed by the Engineer
 Note: All Proposed Guardrail to Use Weathered Steel Unless Otherwise Noted

BDO = BERM DITCH OUTLET
 SEE SHEETS 24 & 25 FOR -L- PROFILE
 SEE SHEET 28 FOR -Y3B- PROFILE
 SEE SHEET 29 FOR -DRV3- PROFILE

Invalid Expressions: N:\000000\53_Rduj_psh16.dgn
USER: N:\000000\53_Rduj_psh16.dgn