

V_{DESIGN} = 35 MPH

-L-		-DET2-					
PI Sta 164+98.39	PI Sta 170+79.48	PI Sta 10+91.30	PI Sta 12+40.38	PI Sta 14+39.88	PI Sta 18+24.29	PI Sta 20+21.80	
$\Delta = 19^{\circ}19'38.0"$ (RT)	$\Delta = 29^{\circ}22'23.3"$ (RT)	$\Delta = 13^{\circ}31'24.7"$ (RT)	$\Delta = 8^{\circ}42'36.3"$ (LT)	$\Delta = 17^{\circ}26'11.5"$ (RT)	$\Delta = 6^{\circ}45'52.8"$ (LT)	$\Delta = 33^{\circ}12'54.1"$ (RT)	
D = 7'38" 22.0"	D = 4'46" 28.7"	D = 7'26" 27.6"	D = 7'26" 27.6"	D = 6'13" 40.1"	D = 7'26" 27.6"	D = 11'14" 04.1"	
L = 252.99'	L = 615.19'	L = 181.74'	L = 117.06'	L = 279.98'	L = 90.91'	L = 295.65'	
T = 127.71'	T = 314.51'	T = 91.30'	T = 58.64'	T = 141.08'	T = 45.51'	T = 152.11'	
R = 750.00'	R = 1,200.00'	R = 770.00'	R = 770.00'	R = 920.00'	R = 770.00'	R = 510.00'	
SE = .07	SE = .05	SE = SEE PLANS	SE = SEE PLANS	SE = SEE PLANS	SE = SEE PLANS	SE = SEE PLANS	
RO = 147'	RO = 105'						

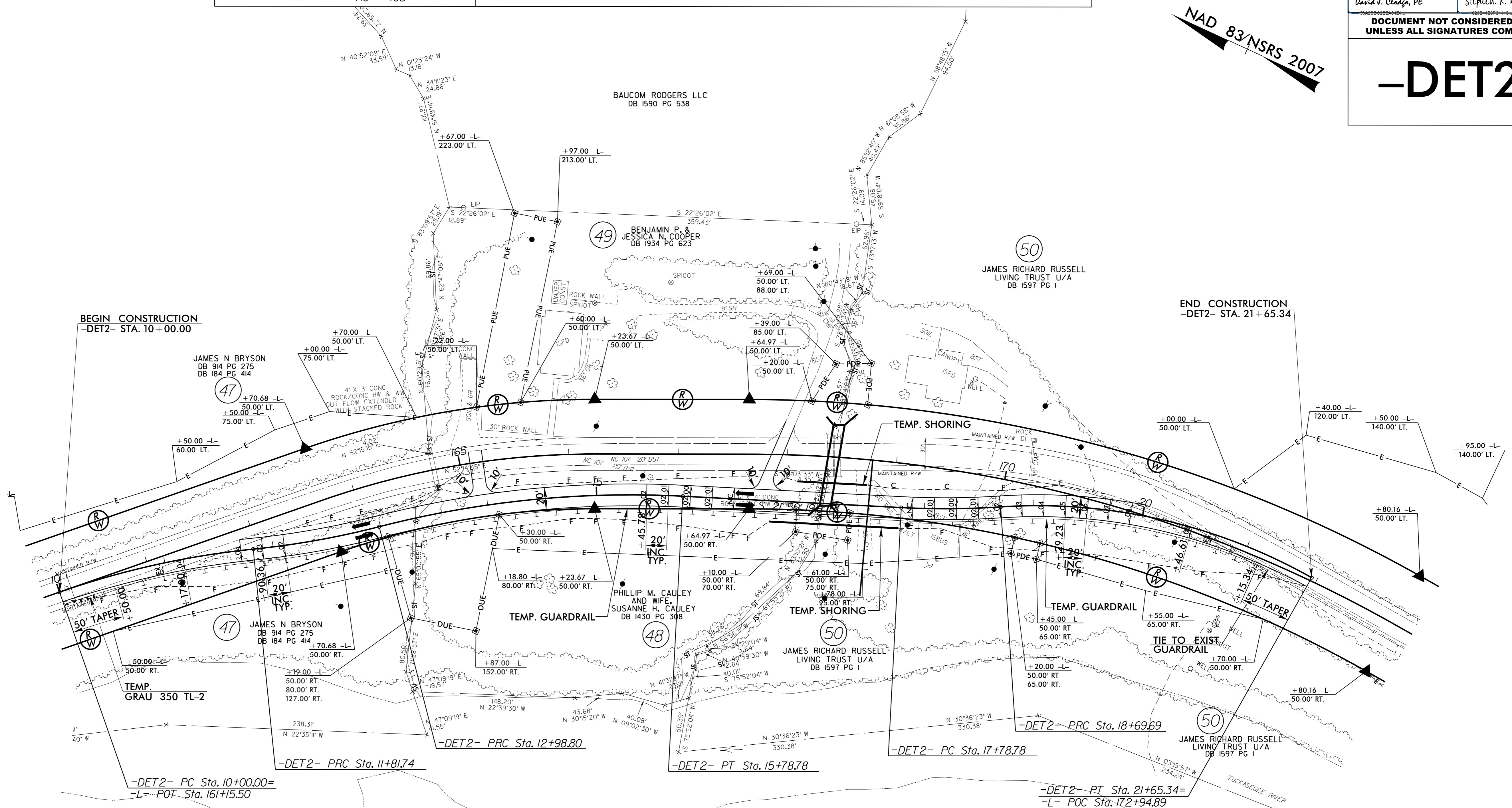
PROJECT REFERENCE NO. R-4753	SHEET NO. 14A
RW SHEET NO.	
ROADWAY DESIGN ENGINEER	HYDRAULICS ENGINEER
David J. Cloddo, PE	Stephen R. Morgan, PE

DOCUMENT NOT CONSIDERED FINAL UNLESS ALL SIGNATURES COMPLETED

-DET2-

NAD 83/NSRS 2007

REVISIONS



NOTE: INSTALL 48" TEMPORARY BYPASS PIPE SEE SHEET TMP-14

SEE SHEET 30 FOR -DET2- PROFILE
PARCEL 50 WILL NOT BE PROVIDED ACCESS (-DRV4-) DURING THE TEMPORARY DETOUR DURATION
SEE TRAFFIC MANAGEMENT PLANS FOR TRAFFIC PHASING.
SEE TRAFFIC MANAGEMENT PLANS FOR TEMPORARY SHORING OFFSETS AND STATIONS ALONG -DET2-.

Invalid expression
USER: C:\psh14a.dgn