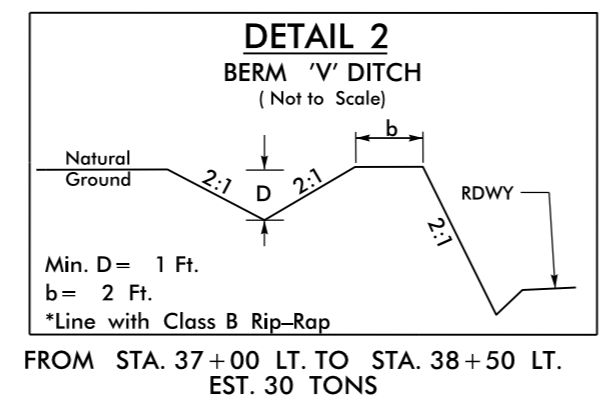
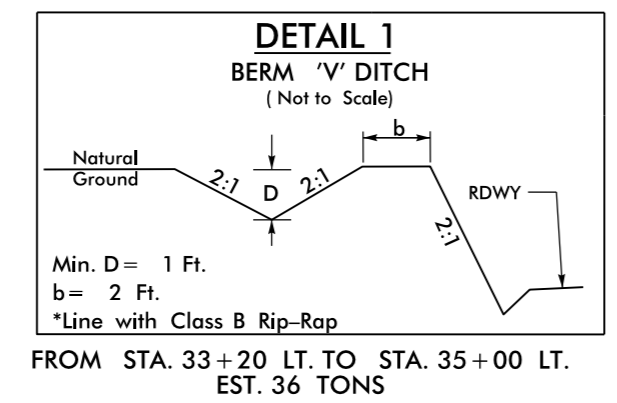
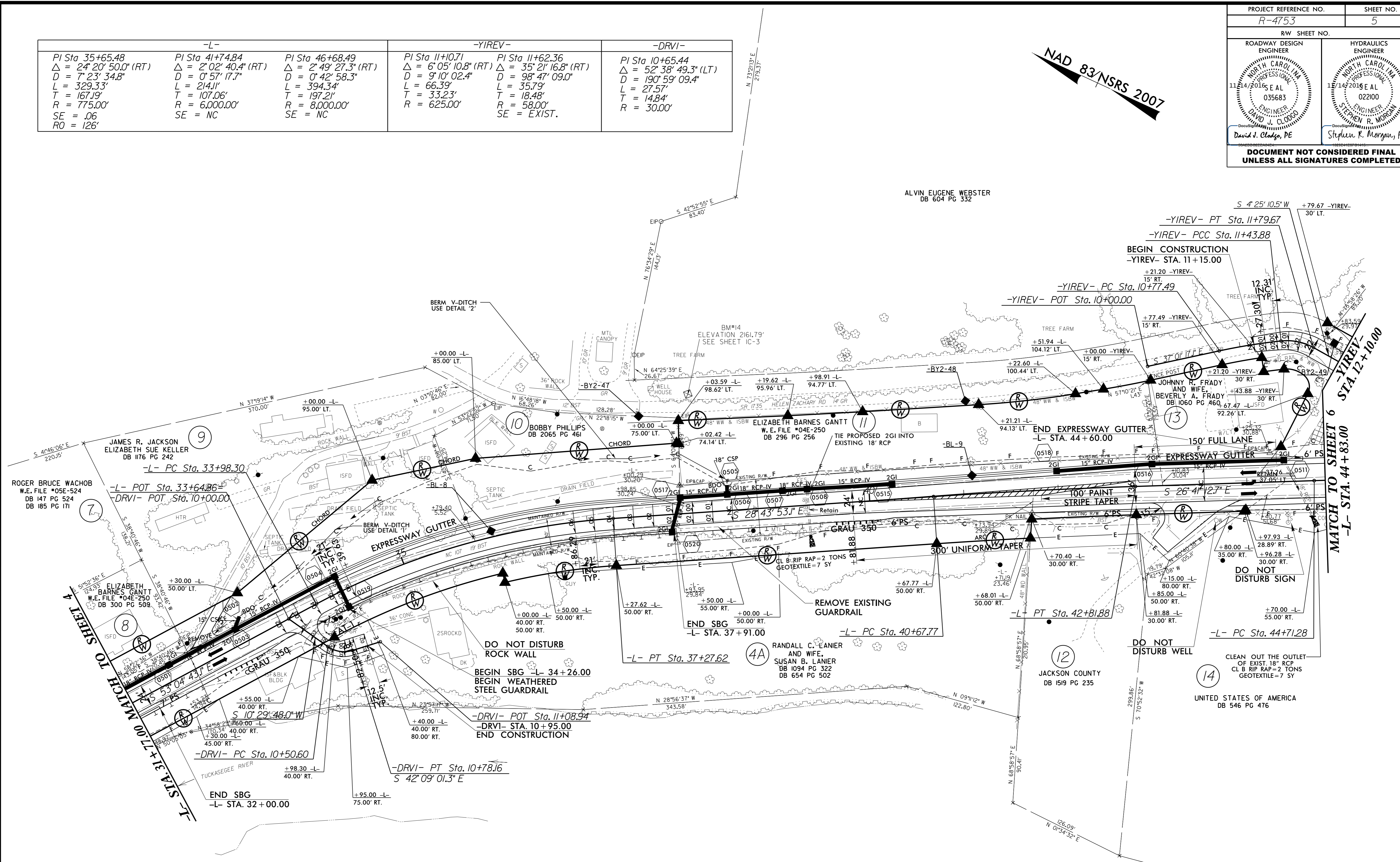


PROJECT REFERENCE NO. R-4753	SHEET NO. 5
RW SHEET NO.	
ROADWAY DESIGN ENGINEER DAVID J. CLADGOS, PE NORTH CAROLINA PROFESSIONAL ENGINEER 11/14/2016 EAL 035683	HYDRAULICS ENGINEER STEPHEN R. MORRISON, PE NORTH CAROLINA PROFESSIONAL ENGINEER 11/14/2016 EAL 022100
DOCUMENT NOT CONSIDERED FINAL UNLESS ALL SIGNATURES COMPLETED	

-L-		-YIREV-		-DRVI-	
PI Sta 35+65.48	PI Sta 41+74.84	PI Sta 46+68.49	PI Sta 11+10.71	PI Sta 11+62.36	PI Sta 10+65.44
$\Delta = 24^{\circ} 20' 50.0''$ (RT)	$\Delta = 2^{\circ} 02' 40.4''$ (RT)	$\Delta = 2^{\circ} 49' 27.3''$ (RT)	$\Delta = 6^{\circ} 05' 10.8''$ (RT)	$\Delta = 35^{\circ} 21' 16.8''$ (RT)	$\Delta = 52^{\circ} 38' 49.3''$ (LT)
D = 7' 23' 34.8"	D = 0' 57' 17.7"	D = 0' 42' 58.3"	D = 9' 10' 02.4"	D = 98' 47' 09.0"	D = 190' 59' 09.4"
L = 329.33'	L = 214.11'	L = 394.34'	L = 66.39'	L = 35.79'	L = 27.57'
T = 167.19'	T = 107.06'	T = 197.21'	T = 33.23'	T = 18.48'	T = 14.84'
R = 775.00'	R = 6,000.00'	R = 8,000.00'	R = 625.00'	R = 58.00'	R = 30.00'
SE = .06	SE = NC	SE = NC	SE = NC	SE = EXIST.	
RO = 126'					

NAD 83/NSRS 2007

REVISIONS



Note: All Driveway Radii Are 20' Unless Otherwise Noted
 Note: Tie all Driveways to the Right of Way Line. Follow the "Pavement Design for Driveways" Memo Dated March 18, 2002 or as Directed by the Engineer
 Note: All Proposed Guardrail to Use Weathered Steel Unless Otherwise Noted

BDO = BERM DITCH OUTLET
 SBG = SHOULDER BERM GUTTER
 PROP. PAINT STRIPING
 SEE SHEETS 19 & 20 FOR -L- PROFILE
 SEE SHEET 26 FOR -YIREV- PROFILE
 SEE SHEET 29 FOR -DRVI- PROFILE

Invalid expression: \\s3_rdu\psh05.dgn
 USER: N:\00000007\53_rdu