

TABLE OF MISCELLANEOUS MACHINERY COMPONENTS

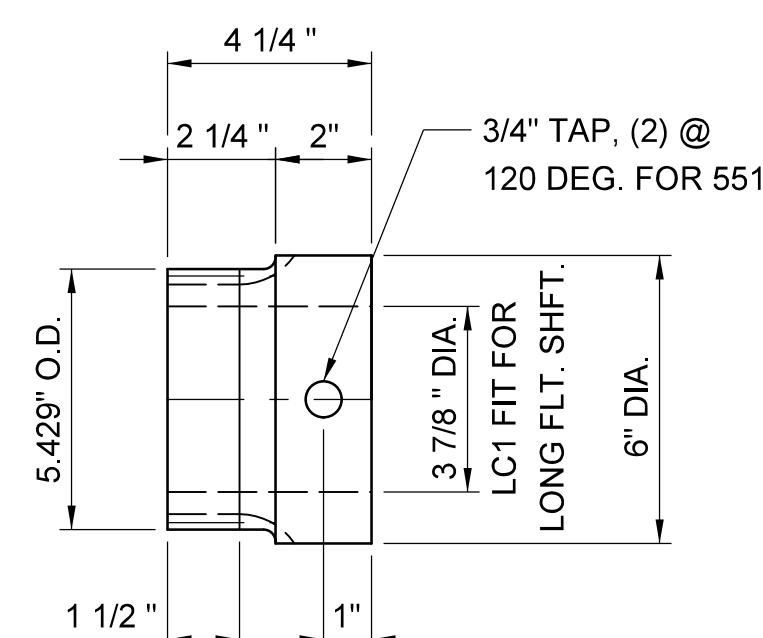
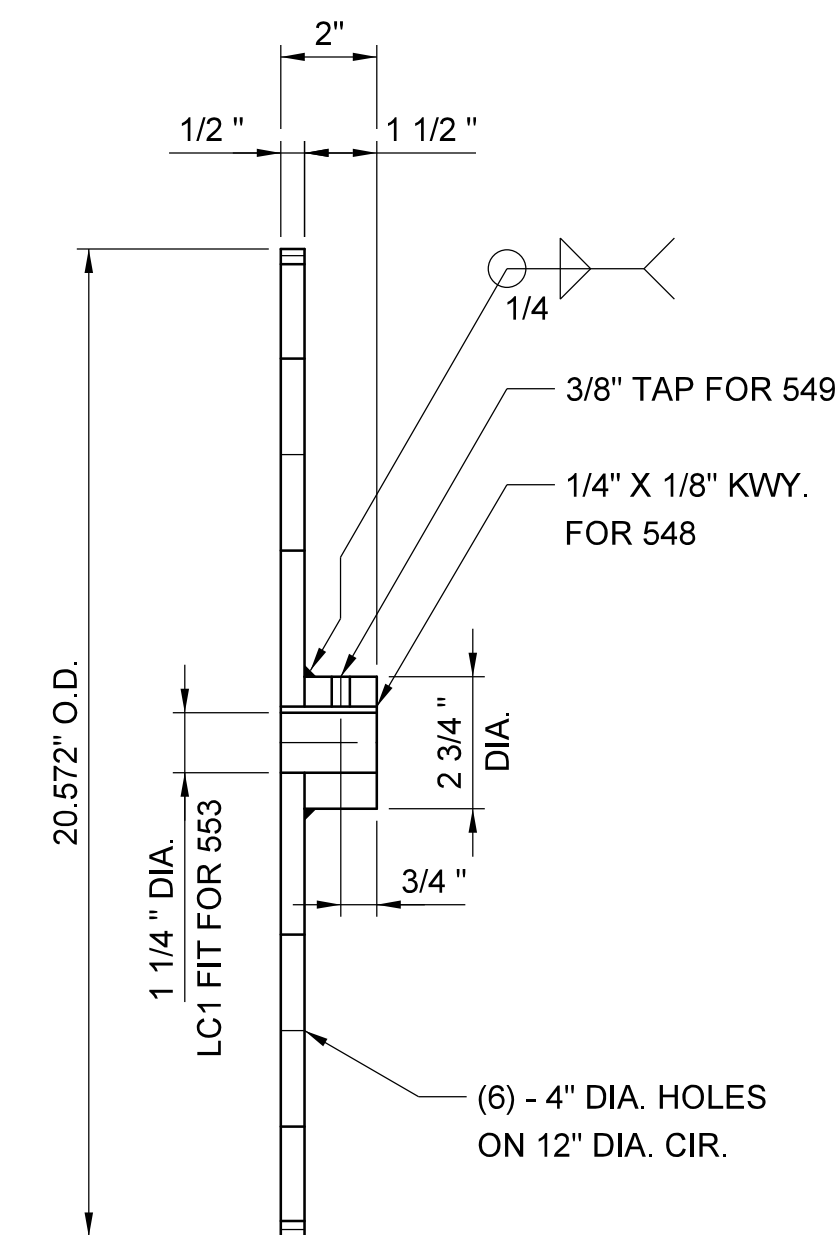
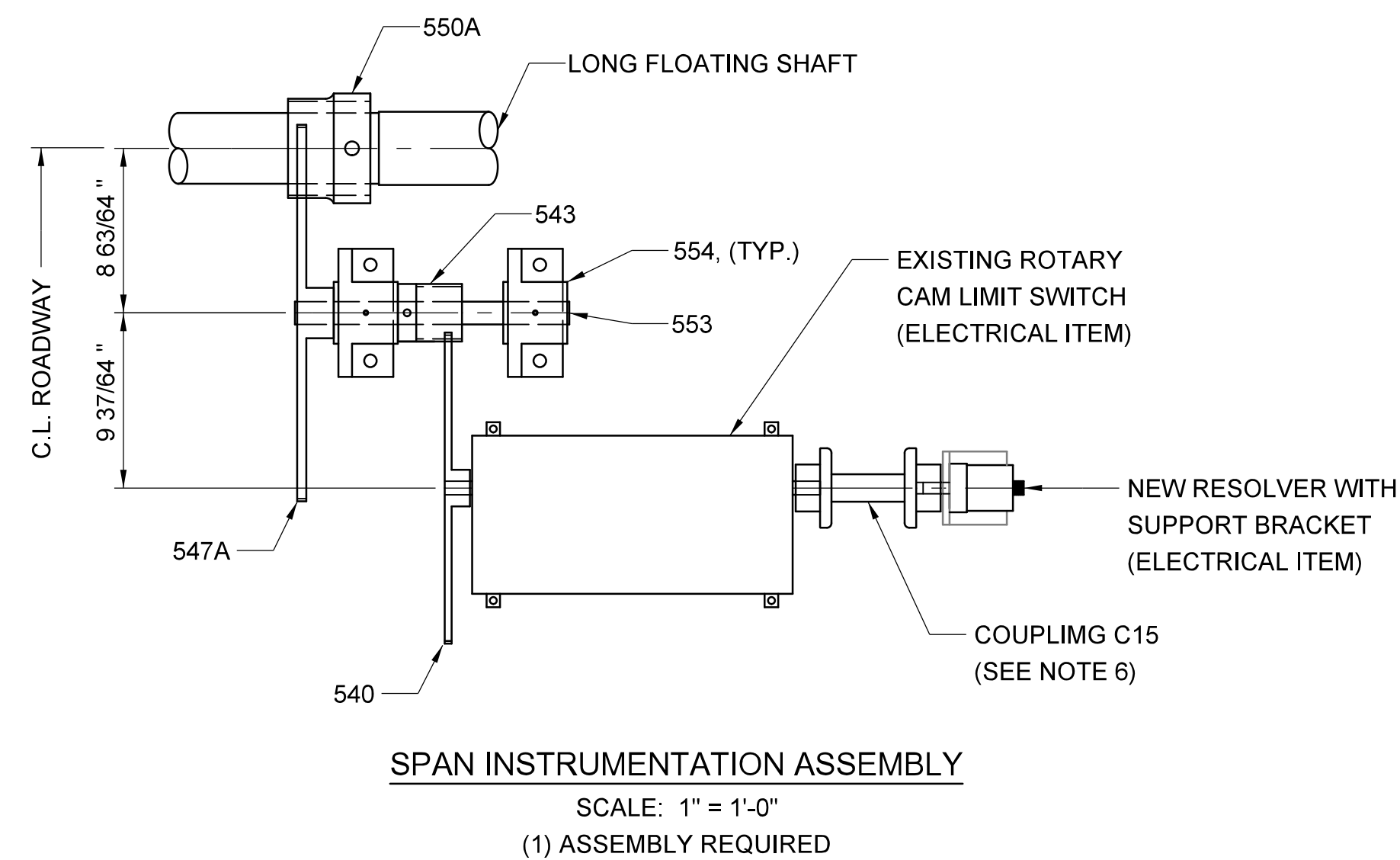
PIECE	NAME	QNTY.	DESCRIPTION OF WORK	MATERIAL	DESIGNATION	SUPPLEMENTAL REQUIREMENT	REMARKS
540	SPAN LIMIT SWITCH GEAR	1	REHABILITATE EXISTING GEAR	N/A	N/A	N/A	SEE NOTE 5
541	KEY FOR 540 AND 558A	2	REPLACE EXISTING KEYS	FORGED STEEL	ASTM A 668 CL. K	N/A	SEE NOTES 1 AND 5
542	SET SCREW FOR 540 AND 561	2	REPLACE EXISTING HARDWARE	STEEL	ASTM F 912	N/A	SEE NOTE 1
543	SPAN LIMIT SWITCH PINION	1	REHABILITATE EXISTING PINION	N/A	N/A	N/A	SEE NOTE 5
544	KEY FOR 543	1	REPLACE EXISTING KEY	FORGED STEEL	ASTM A 668 CL. K	N/A	SEE NOTE 1
545	SET SCREW FOR 543	1	REPLACE EXISTING HARDWARE	STEEL	ASTM F 912	N/A	SEE NOTE 1
547A	INTERMEDIATE GEAR	1	REPLACE EXISTING GEAR	N/A	N/A	N/A	SEE DETAIL THIS SHEET
548	KEY FOR 547A	1	REPLACE EXISTING KEY	FORGED STEEL	ASTM A 668 CL. K	N/A	SEE NOTE 1
549	SET SCREW FOR 547A	1	REPLACE EXISTING HARDWARE	FORGED STEEL	ASTM A 449	N/A	SEE NOTE 1, 3 AND 4
550A	SPUR PINION	1	REPLACE EXISTING PINION	N/A	N/A	N/A	SEE DETAIL THIS SHEET
551	SET SCREW FOR 550A	2	REPLACE EXISTING HARDWARE	STEEL	ASTM F 912	N/A	SEE NOTE 1
553	INTERMEDIATE SHAFT	1	REHABILITATE EXISTING SHAFT	N/A	N/A	N/A	SEE NOTE 5
554	INTERMEDIATE SHAFT BEARING	2	REHABILITATE EXISTING BEARINGS	N/A	N/A	N/A	SEE NOTE 5
555	BASE BOLTS FOR 554	4	REPLACE EXISTING HARDWARE	FORGED STEEL	ASTM A 449	N/A	SEE NOTE 1, 3 AND 4
556	SHIM FOR 554	2-SETS	REPLACE EXISTING SHIMS	STAINLESS STEEL	ASTM A 240	N/A	SEE NOTES 1 AND 2
559	WEDGE LIMIT SWITCH GEAR	1	REHABILITATE EXISTING GEAR	N/A	N/A	N/A	SEE NOTE 5
560	BOLTS FOR 559	2	REPLACE EXISTING HARDWARE	FORGED STEEL	ASTM A 449	N/A	SEE NOTE 1, 3 AND 4
561	WEDGE LIMIT SWITCH PINION	1	REHABILITATE EXISTING PINION	N/A	N/A	N/A	SEE NOTE 5
562	KEY FOR 561	1	REPLACE EXISTING KEY	FORGED STEEL	ASTM A 668 CL. K	N/A	SEE NOTE 1
N/A	SPAN ROTARY CAM LIMIT SWITCH	1	REUSE EXISTING SPAN LIMIT SWITCH	N/A	N/A	N/A	ELECTRICAL ITEM
N/A	BOLTS FOR ROTARY CAM LIMIT SWITCH	4	REPLACE EXISTING HARDWARE	FORGED STEEL	ASTM A 449	N/A	SEE NOTE 1, 3 AND 4
N/A	SHIM FOR ROTARY CAM LIMIT SWITCH	2-SETS	REPLACE EXISTING SHIMS	STAINLESS STEEL	ASTM A 240	N/A	SEE NOTES 1 AND 2
N/A	RESOLVER	1	REPLACE EXISTING SELSYN WITH NEW DIGITAL ENCODER	N/A	N/A	N/A	ELECTRICAL ITEM
N/A	WEDGE ROTARY CAM LIMIT SWITCH	1	REPLACE EXISTING WEDGE LIMIT SWITCH	N/A	N/A	N/A	ELECTRICAL ITEM

MISCELLANEOUS MACHINERY REHABILITATION NOTES:

- EXISTING PIECE(S) SHALL BE REMOVED AND REPLACED IN-KIND. THE IN-KIND REPLACEMENT PIECE(S) SHALL BE DETAILED USING DIMENSIONAL INFORMATION SHOWN ON THE ORIGINAL SHOP DRAWINGS AND MATERIAL INFORMATION SHOWN ON THIS DRAWING. THE CONTRACTOR SHALL VERIFY THE ACCURACY OF THE DIMENSIONAL INFORMATION BY MEASURING EXISTING PIECE(S) PRIOR TO SUBMITTING SHOP DRAWINGS.
- UNLESS NOTED OTHERWISE, ALL IN-KIND REPLACEMENT PIECES, REHABILITATED PIECES AND NEW PIECES SHALL BE PROVIDED WITH NEW SHIMS. SHIMS SHALL PROVIDE FOR PROPER ALIGNMENT OF MATING PIECES.
- UNLESS NOTED OTHERWISE, ALL IN-KIND REPLACEMENT PIECES, REHABILITATED PIECES AND NEW PIECES SHALL BE PROVIDED WITH NEW HARDWARE. HARDWARE SHALL PROVIDE FOR PROPER MOUNTING.
- HARDWARE FOR IN-KIND REPLACEMENT PIECES AND REHABILITATED PIECES SHALL COMPLEMENT THE REQUIREMENTS OF THE ORIGINAL SHOP DRAWINGS. HARDWARE FOR NEW PIECES SHALL BE PER THE GENERAL MACHINERY NOTES AND GENERAL BRIDGE MACHINERY SPECIFICATION.
- REHABILITATION OF LIMIT SWITCH COMPONENTS, INCLUDING GEARS, PINIONS, SHAFTING, BEARINGS, ETC., SHALL INCLUDE CLEANING OF ALL SURFACES FOR INSPECTION, ADJUSTMENT FOR PROPER ALIGNMENT, PREPARATION OF EXPOSED SURFACES FOR PAINTING, PAINTING AND REASSEMBLY WITH MATING PIECES. WHEN APPLICABLE, THE CONTRACTOR SHALL COORDINATE MATING DIMENSIONS OF NEW (REPLACEMENT) PIECES WITH EXISTING (REHABILITATED) PIECES.
- DELTAFLX COUPLINGS SHALL HAVE STAINLESS STEEL FLEX LINKS AND FLANGES. CLEARANCE BETWEEN SHAFTS AND DELTAFLX HUBS SHALL NOT EXCEED 0.001".

TABLE OF NEW MISCELLANEOUS MACHINERY COUPLINGS

MARK	QNTY.	SIZE	TORQUE RATING IN-KIPS	TYPE	DRIVING HALF			DRIVEN HALF			MANUFACTURER
					NOMINAL BORE, IN.	KEY IN. x IN.	R = RIGID F = FLEX	KEY IN. x IN.	NOMINAL BORE, IN.		
C15	1	40	75.3	DELTAFLX TYPE 3	3/4	3/16 X 3/16	F F	3/16 x 3/16	5/8	LOVEJOY	



PROJECT NO. B-5936
TYRRELL COUNTY
BRIDGE NO: 7

STATE OF NORTH CAROLINA
DEPARTMENT OF TRANSPORTATION
RALEIGH
MISCELLANEOUS MACHINERY DETAILS
ALLIGATOR RIVER SWING SPAN

DocuSigned by:
Scott Reynolds
BFC5720F9148D...



DRAWN BY: JAG/MS DATE: 8/8/2016
CHECKED BY: GAF/RH DATE: 8/8/2016
DESIGN ENGINEER OF RECORD: JAG/MS DATE: 8/8/2016

DWG NUMBER 90	TOTAL DWGS 90	DOCUMENT NOT CONSIDERED FINAL UNLESS ALL SIGNATURES COMPLETED	NO. BY: DATE:	NO. BY: DATE:	SHEET NO. M-23
			1	3	TOTAL SHEETS 23
			2	4	