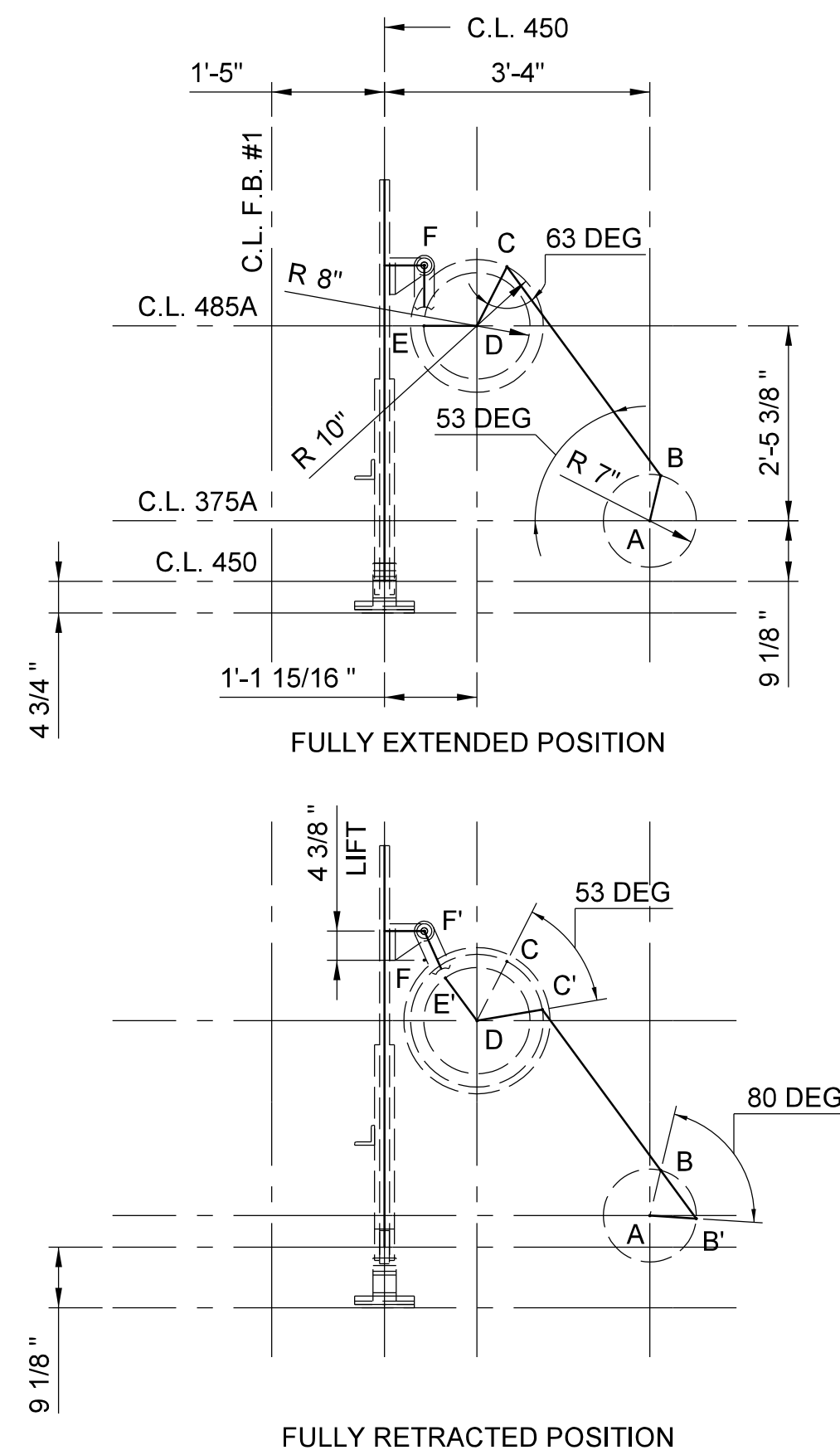


CENTERING DEVICE MACHINERY ASSEMBLY

SCALE: 1/2" = 1'-0"
 (1) ASSEMBLY REQUIRED - AS SHOWN
 (1) ASSEMBLY REQUIRED - OPPOSITE

DRAWN BY: JAG/MS DATE: 8/8/2016
 CHECKED BY: GAF/RH DATE: 8/8/2016
 DESIGN ENGINEER OF RECORD: JAG/MS DATE: 8/8/2016



CENTERING DEVICE LINKAGE - BASIC KINEMATIC DIAGRAM

N.T.S.
 DIMENSIONS PER ORIGINAL SHOP DRAWINGS
 ANGLES SHOWN NOMINAL

CENTERING DEVICE MACHINERY REHABILITATION NOTES:

1. FOR A GENERAL DESCRIPTION OF WORK FOR EACH OF THE COMPONENTS SHOWN ON THIS SHEET, PLEASE REFER TO THE CENTERING DEVICE MACHINERY TABLE SHOWN ON SHEET NO. M-22.
2. THE CENTERING DEVICE MACHINERY SHALL BE REMOVED FROM THE SWING SPAN AND BROUGHT TO A QUALIFIED MACHINE SHOP FOR REHABILITATION. AT THE MACHINE SHOP, ALL EXISTING COMPONENTS TO BE REUSED WILL BE CLEANED, INSPECTED AND PREPARED FOR REUSE. ALL EXISTING COMPONENT TO BE REPLACED WILL BE CLEANED, INSPECTED AND MEASURED TO CONFIRM THE FINAL DIMENSIONS AND FEATURES OF REPLACEMENT COMPONENTS. WHILE THE CENTERING DEVICE MACHINERY IS OUT OF SERVICE, THE CONTRACTOR SHALL PLAN TO PROVIDE A TEMPORARY MEANS OF SECURING THE SPAN IN THE CLOSED POSITION. THIS WORK SHOULD BE PERFORMED IN A COORDINATED MANNER WITH THE END WEDGE AND CENTER WEDGE MACHINERY, SINCE EACH OF THESE SYSTEMS UTILIZE COMMON EQUIPMENT.
3. THE CONTRACTOR SHALL PLAN TO ADJUST THE POSITION OF THE REHABILITATED LATCH BAR SUCH THAT IT ENGAGES THE LATCH POCKET WITH THE SWING SPAN IN THE 'CLOSED TO NAVIGATION' POSITION AND IS CAPABLE OF RETRACTING THE LATCH BAR TO AN ELEVATION THAT WILL ALLOW IT TO ROLL UP ITS POCKET RAMP AND SELF-DISENGAGE AS INTENDED DURING SWING SPAN OPERATIONS. THE FINAL ELEVATION OF THE CENTERING DEVICE MACHINERY MAY REQUIRE ADJUSTMENT OF MACHINERY COMPONENT SHIM THICKNESS AND/OR ADJUSTMENT OF LATCH POCKET GROUT THICKNESS TO BEST COMPLEMENT THE FINAL ELEVATION OF THE SWING SPAN.
4. ALL IN-KIND REPLACEMENT, IN-KIND REHABILITATED AND NEW COMPONENTS MAKING UP THE CENTERING DEVICE MACHINERY ASSEMBLY SHALL BE PROVIDED WITH NEW SHIMS AND HIGH STRENGTH HARDWARE, UNLESS OTHERWISE SHOWN OR REQUIRED WITHIN THE SPECIFICATIONS.

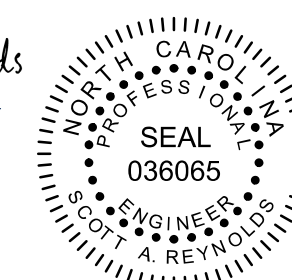
PROJECT NO. B-5936
TYRRELL COUNTY
 BRIDGE NO: 7

STATE OF NORTH CAROLINA
 DEPARTMENT OF TRANSPORTATION
 RALEIGH

CENTERING DEVICE MACHINERY ASSEMBLY

ALLIGATOR RIVER SWING SPAN

DocuSigned by:
 Scott Reynolds
 9/14/2016



DWG NUMBER	TOTAL DWGS	DOCUMENT NOT CONSIDERED FINAL UNLESS ALL SIGNATURES COMPLETED	REVISIONS			SHEET NO.
86	90		NO	BY	DATE	M-19
			1			TOTAL SHEETS
			2			23