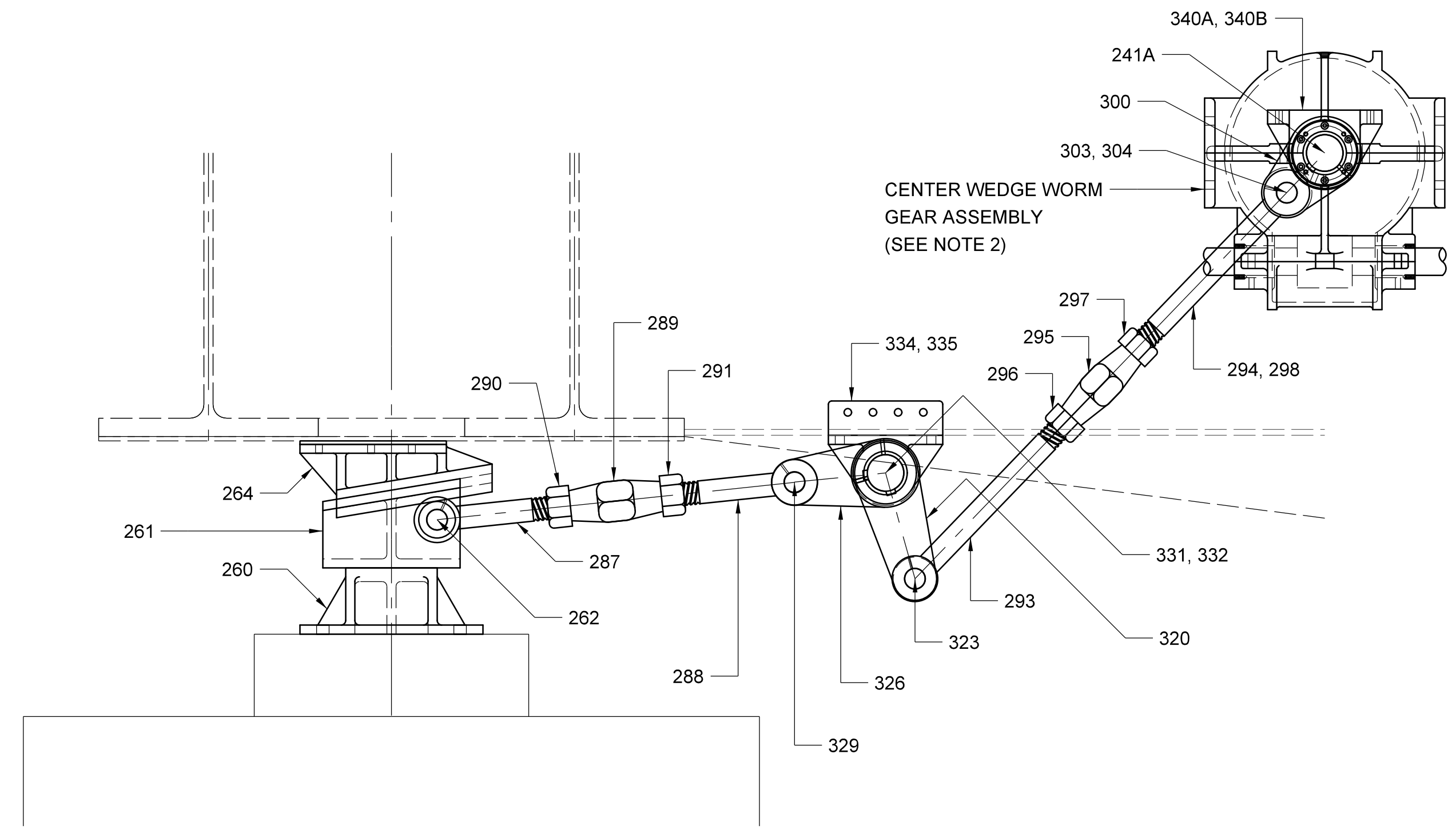
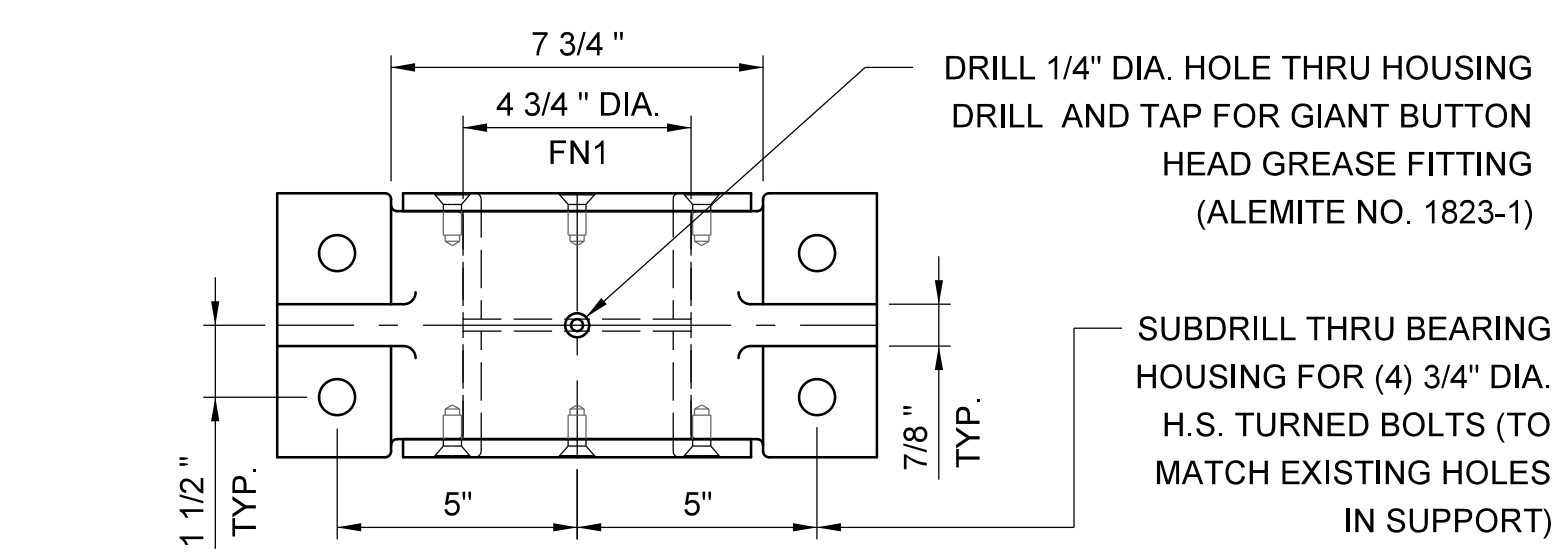


CENTER WEDGE MACHINERY REHABILITATION NOTES:

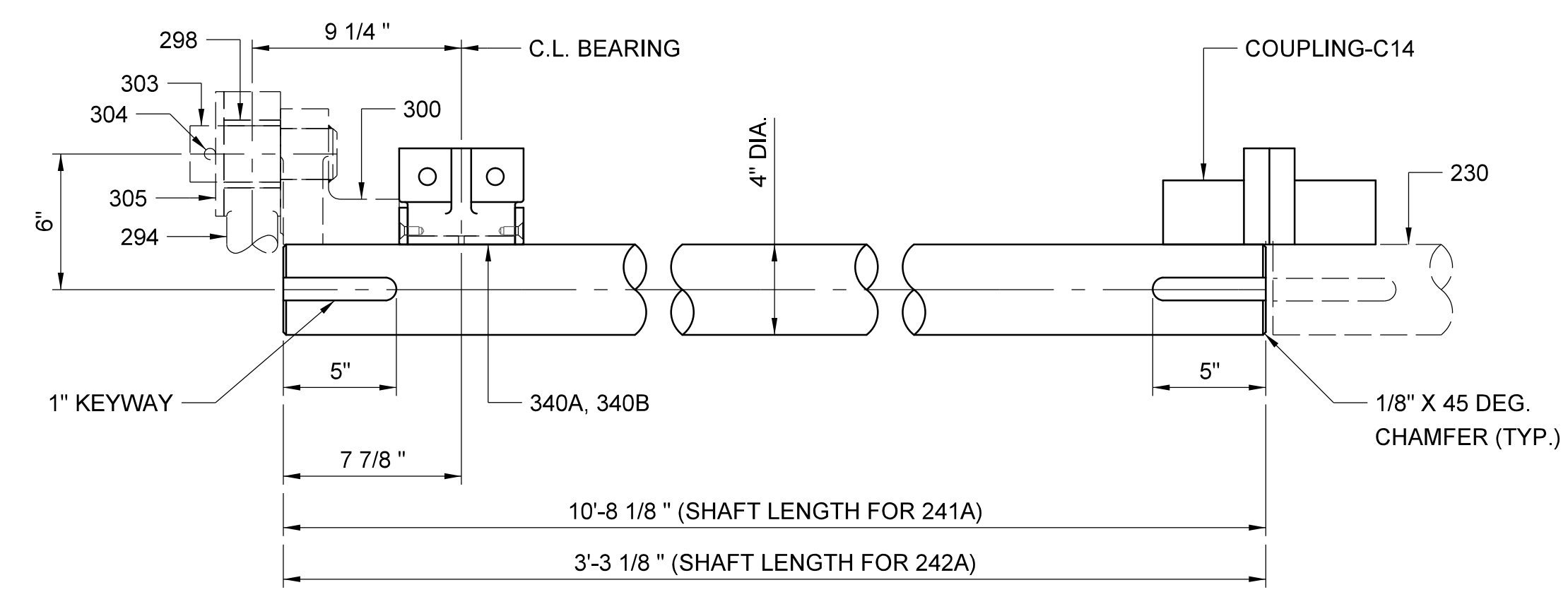
1. FOR A GENERAL DESCRIPTION OF WORK FOR EACH OF THE COMPONENTS SHOWN ON THIS SHEET, PLEASE REFER TO THE CENTER WEDGE MACHINERY TABLE SHOWN ON SHEET NO. M-18.
2. CENTER WEDGE WORM GEAR ASSEMBLY SHALL INCLUDE THE FOLLOWING PIECES: 208-217, 221-224, 226, 227 AND 229-232.
3. UNLESS OTHERWISE NOTED, ALL KEYWAYS ON EACH SHAFT SHALL BE IN LINE.
4. COUPLING-C14 OUTER FLANGE DIAMETER IS LARGER THAN THE EXISTING COUPLING OUTER FLANGE DIAMETER. CONTRACTOR TO VERIFY THAT THERE IS SUFFICIENT CLEARANCE SURROUNDING THE COUPLING PRIOR TO ORDERING.



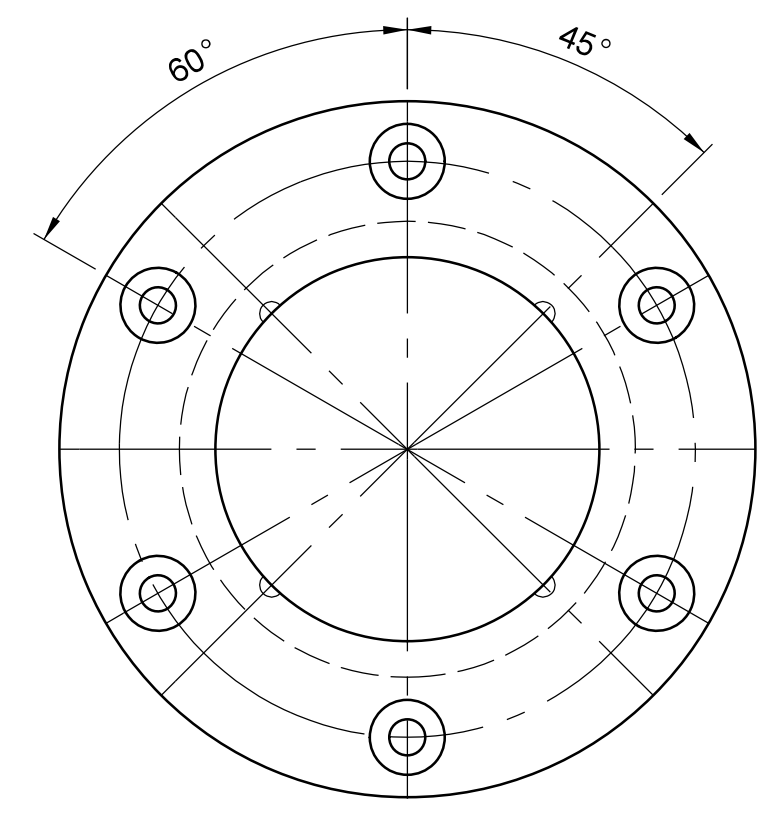
CENTER WEDGE CRANK ASSEMBLY
SCALE: 1" = 1'-0"



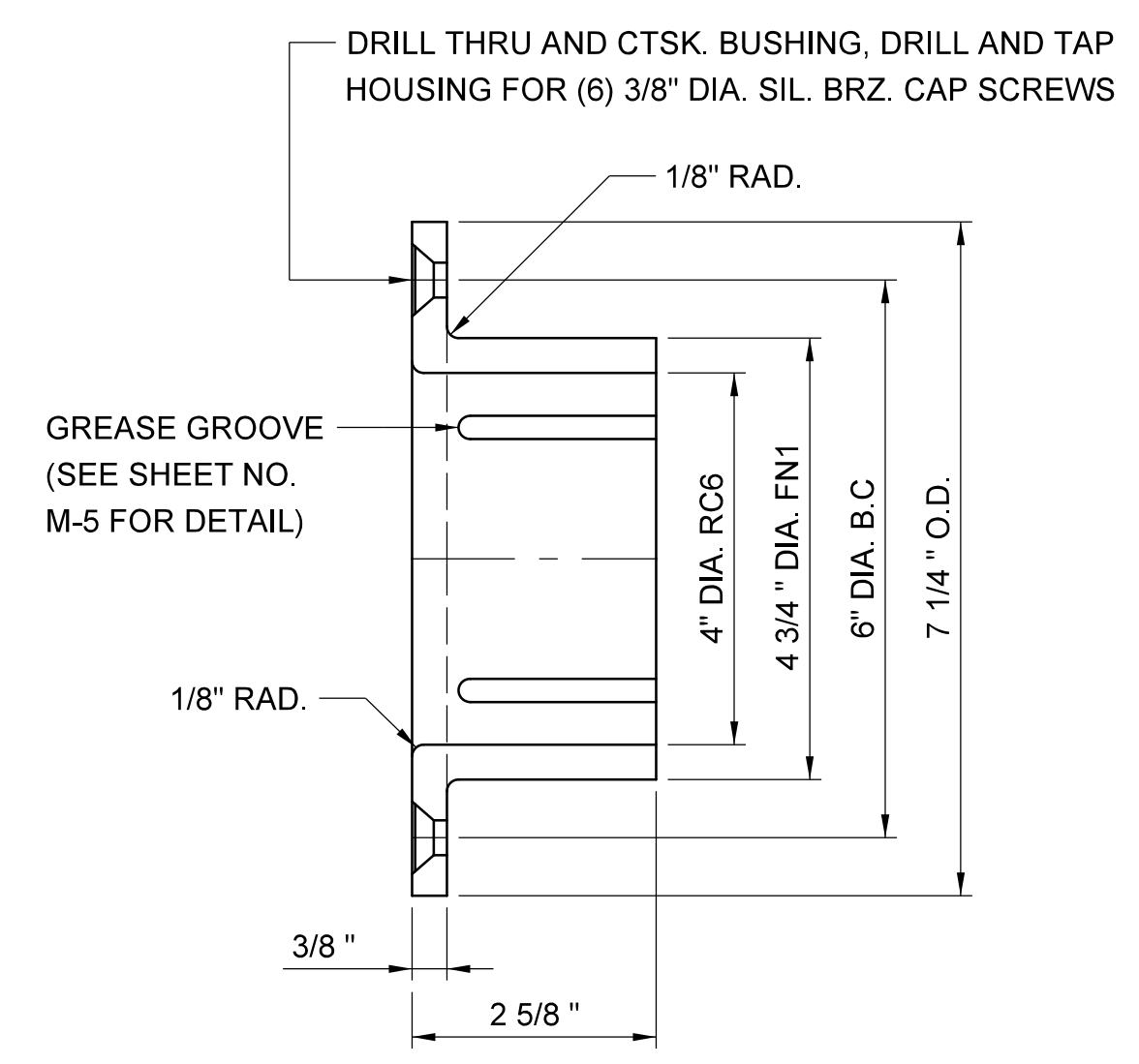
340A - C.W. AND E.W. CRANK SHAFT BEARING ASSEMBLY
SCALE: 3" = 1'-0"



241A/242A - C.W. CRANK SHAFT
SCALE: 2" = 1'-0"



340B - BUSHING FOR 340A
SCALE: 6" = 1'-0"



PROJECT NO. B-5936
TYRRELL COUNTY
BRIDGE NO: 7

STATE OF NORTH CAROLINA
DEPARTMENT OF TRANSPORTATION
RALEIGH

CENTER WEDGE MACHINERY DETAILS II

ALLIGATOR RIVER SWING SPAN

DRAWN BY: JAG/MS DATE: 8/8/2016
CHECKED BY: GAF/RH DATE: 8/8/2016
DESIGN ENGINEER OF RECORD: JAG/MS DATE: 8/8/2016

DWG NUMBER	TOTAL DWGS
84	90

DOCUMENT NOT CONSIDERED FINAL UNLESS ALL SIGNATURES COMPLETED

REVISIONS						SHEET NO. M-17
NO	BY	DATE	NO	BY	DATE	
1			3			TOTAL SHEETS 23
2			4			

DocuSigned by:
Scott Reynolds
PROFESSOR OF ENGINEERING
SEAL 036065
9/14/2016

Hardesty & Hanover
engineering that moves you