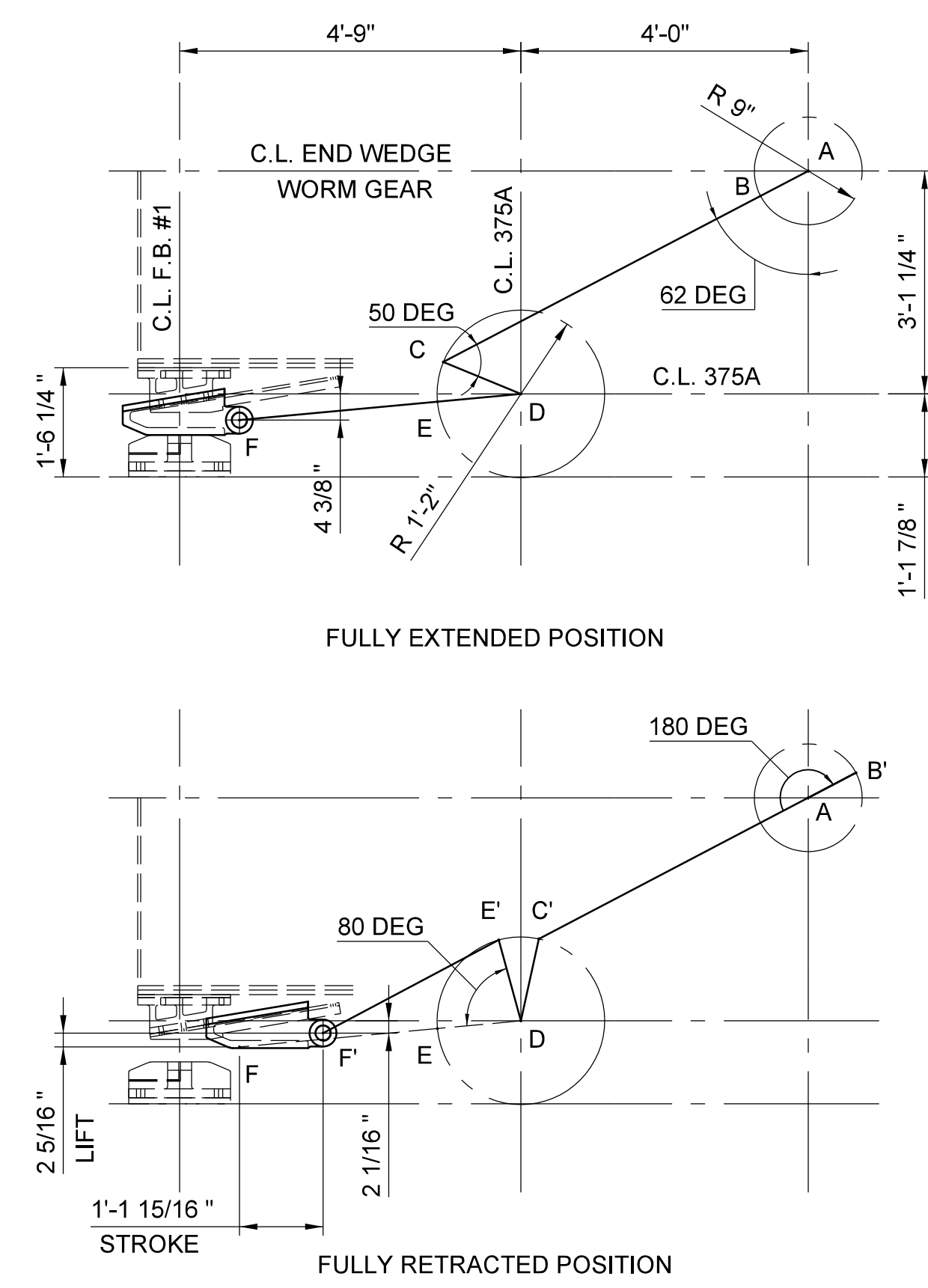


END WEDGE MACHINERY ASSEMBLY

SCALE: 1/2" = 1'-0"
 (1) ASSEMBLY REQUIRED - AS SHOWN
 (1) ASSEMBLY REQUIRED - OPPOSITE

DRAWN BY: JAG/MS DATE: 8/8/2016
 CHECKED BY: GAF/RH DATE: 8/8/2016
 DESIGN ENGINEER OF RECORD: JAG/MS DATE: 8/8/2016



END WEDGE LINKAGE - BASIC KINEMATIC DIAGRAM

N.T.S.
 DIMENSIONS PER ORIGINAL SHOP DRAWINGS
 ANGLES SHOWN NOMINAL

END WEDGE MACHINERY REHABILITATION NOTES:

- FOR A GENERAL DESCRIPTION OF WORK FOR EACH OF THE COMPONENTS SHOWN ON THIS SHEET, PLEASE REFER TO THE END WEDGE MACHINERY TABLES SHOWN ON SHEET NOS. M-13 AND M-14.
- THE END WEDGE MACHINERY SHALL BE REMOVED FROM THE SWING SPAN AND BROUGHT TO A QUALIFIED MACHINE SHOP FOR REHABILITATION. AT THE MACHINE SHOP, ALL EXISTING COMPONENTS TO BE REUSED WILL BE CLEANED, INSPECTED AND PREPARED FOR REUSE. ALL EXISTING COMPONENTS TO BE REPLACED WILL BE CLEANED, INSPECTED AND MEASURED TO CONFIRM THE FINAL DIMENSIONS AND FEATURES OF REPLACEMENT COMPONENTS. WHILE THE END WEDGE MACHINERY IS OUT OF SERVICE, THE CONTRACTOR SHALL PLAN TO PROVIDE A TEMPORARY MEANS OF RAISING (SUPPORTING) AND LOWERING (FREEING) THE SWING SPAN ENDS TO ALLOW FOR BOTH VEHICULAR AND NAVIGABLE TRAFFIC. THIS WORK SHOULD BE PERFORMED IN A COORDINATED MANNER WITH THE CENTER WEDGE AND CENTERING DEVICE MACHINERY, SINCE EACH OF THESE SYSTEMS UTILIZE COMMON EQUIPMENT.
- THE CONTRACTOR SHALL PLAN TO ADJUST THE POSITION OF THE REHABILITATED END WEDGES SUCH THAT EACH ARE CENTERED WITH THEIR RESPECTIVE SEATS WHEN THE SWING SPAN ENDS ALIGN WITH THE APPROACH STRUCTURE AND PROVIDE FOR THE REQUIRED POSITIVE REACTION AT EACH CORNER WITH THE CRANK ASSEMBLIES IN THEIR TOGGLED POSITION. SUCH ALIGNMENT SHOULD RESULT IN EFFICIENT ACTUATION OF THE END WEDGES DURING OPERATION AND MAXIMUM CLEARANCE WHEN RETRACTED. THE FINAL ELEVATION OF THE END WEDGE MACHINERY MAY REQUIRE ADJUSTMENT OF MACHINERY COMPONENT SHIM THICKNESS AND/OR ADJUSTMENT OF WEDGE SEAT GROUT THICKNESS TO BEST COMPLEMENT THE FINAL ELEVATION OF THE SWING SPAN.
- ALL IN-KIND REPLACEMENT, IN-KIND REHABILITATED AND NEW COMPONENTS MAKING UP THE END WEDGE MACHINERY ASSEMBLY SHALL BE PROVIDED WITH NEW SHIMS AND HIGH STRENGTH HARDWARE, UNLESS OTHERWISE SHOWN OR REQUIRED WITHIN THE SPECIFICATIONS.

PROJECT NO. B-5936
TYRRELL COUNTY
 BRIDGE NO: 7

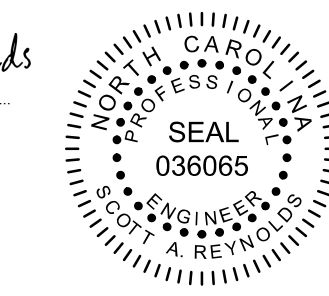
STATE OF NORTH CAROLINA
 DEPARTMENT OF TRANSPORTATION
 RALEIGH

END WEDGE MACHINERY ASSEMBLY

ALLIGATOR RIVER SWING SPAN

DocuSigned by:
 Scott Reynolds
 BFECS729F8F148D
 9/14/2016

HH Hardesty & Hanover
 engineering that moves you



REVISIONS						SHEET NO.
NO.	BY:	DATE:	NO.	BY:	DATE:	M-7
1			3			TOTAL SHEETS
2			4			23

DWG NUMBER	TOTAL DWGS
74	90

DOCUMENT NOT CONSIDERED FINAL UNLESS ALL SIGNATURES COMPLETED