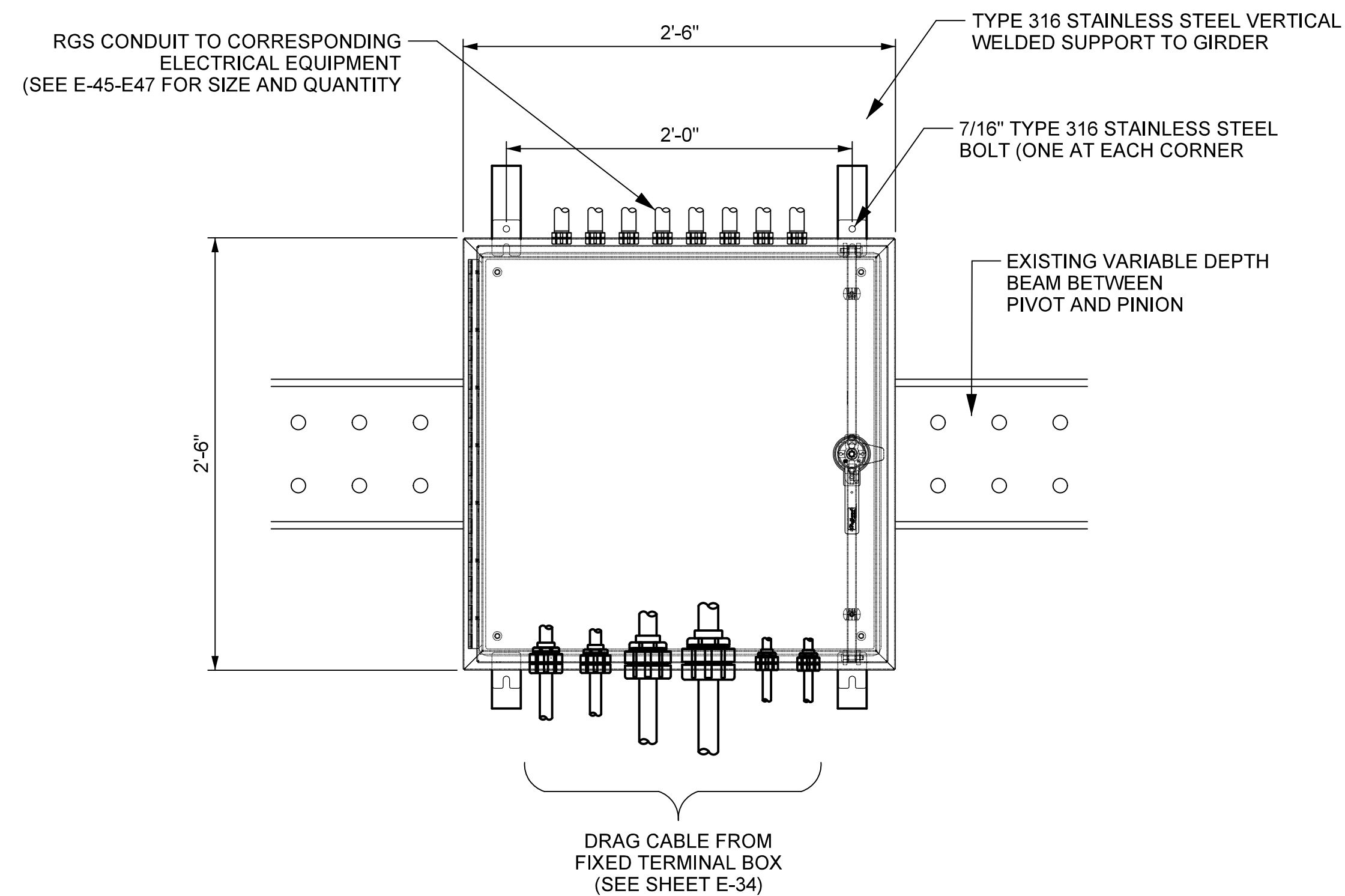
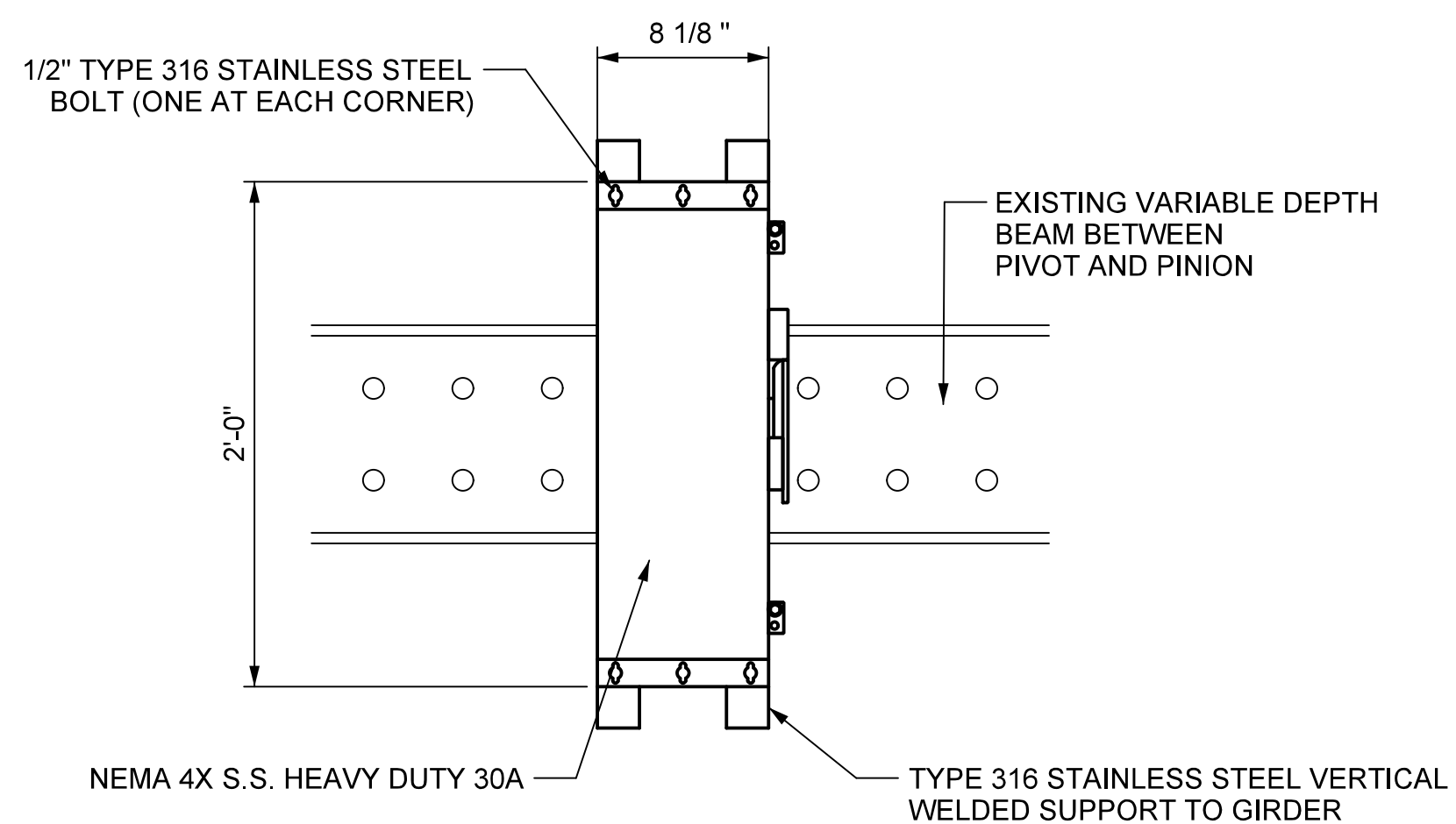


**SPAN MOTOR DISCONNECT SWITCH**  
SCALE: 1 1/2" = 1'-0"



**PIVOT PIER MOVABLE TERMINAL CABINET**  
SCALE: 1" = 1'-0"



**WEDGE MOTOR DISCONNECT SWITCH**  
(MOTOR BRAKE, MACHINERY BRAKE 1 & 2 SIMILAR)  
SCALE: 1 1/2" = 1'-0"

**NOTES:**

1. THE SPAN MOTOR DISCONNECT SWITCH SHALL BE A HEAVY DUTY NON-FUSIBLE, SINGLE THROW, 480V, 100A, NEMA 4X S.S., THREE POLE EATON DISCONNECT SWITCH CATALOG NUMBER HU361DS OR APPROVED EQUAL.
2. THE WEDGE MOTOR DISCONNECT SWITCH SHALL BE A HEAVY DUTY NON-FUSIBLE, SINGLE THROW, 480V, 30A, NEMA 4X S.S., THREE POLE EATON DISCONNECT SWITCH CATALOG NUMBER HU361DS OR APPROVED EQUAL.

PROJECT NO. B-5936  
TYRRELL COUNTY  
BRIDGE NO: 7

STATE OF NORTH CAROLINA  
DEPARTMENT OF TRANSPORTATION  
RALEIGH

**ELECTRICAL DETAILS:  
DISCONNECT SWITCH AND  
PANEL MOUNTING DETAIL**

**ALLIGATOR RIVER  
SWING SPAN**

DocuSigned by:  
*Scott Reynolds*  
BFEC520F8F146D

9/14/2016

**Hardesty & Hanover**  
engineering that moves you

SEAL  
036065  
ENGINEER  
SCOTT A. REYNOLDS

DRAWN BY: \_QIV DATE: 8/8/2016  
CHECKED BY: \_MJT DATE: 8/8/2016  
DESIGN ENGINEER OF RECORD: \_CHS DATE: 8/8/2016

DWG NUMBER	TOTAL DWGS	DOCUMENT NOT CONSIDERED FINAL UNLESS ALL SIGNATURES COMPLETED	NO	BY:	DATE:	NO	BY:	DATE:	SHEET NO.
65	90		1			3			E-49
			2			4			TOTAL SHEETS 51

\*\*\*\*\*DTM\*\*\*\*\*  
\*\*\*\*\*DGN\*\*\*\*\*  
\*\*\*\*\*USERNAME\*\*\*\*\*