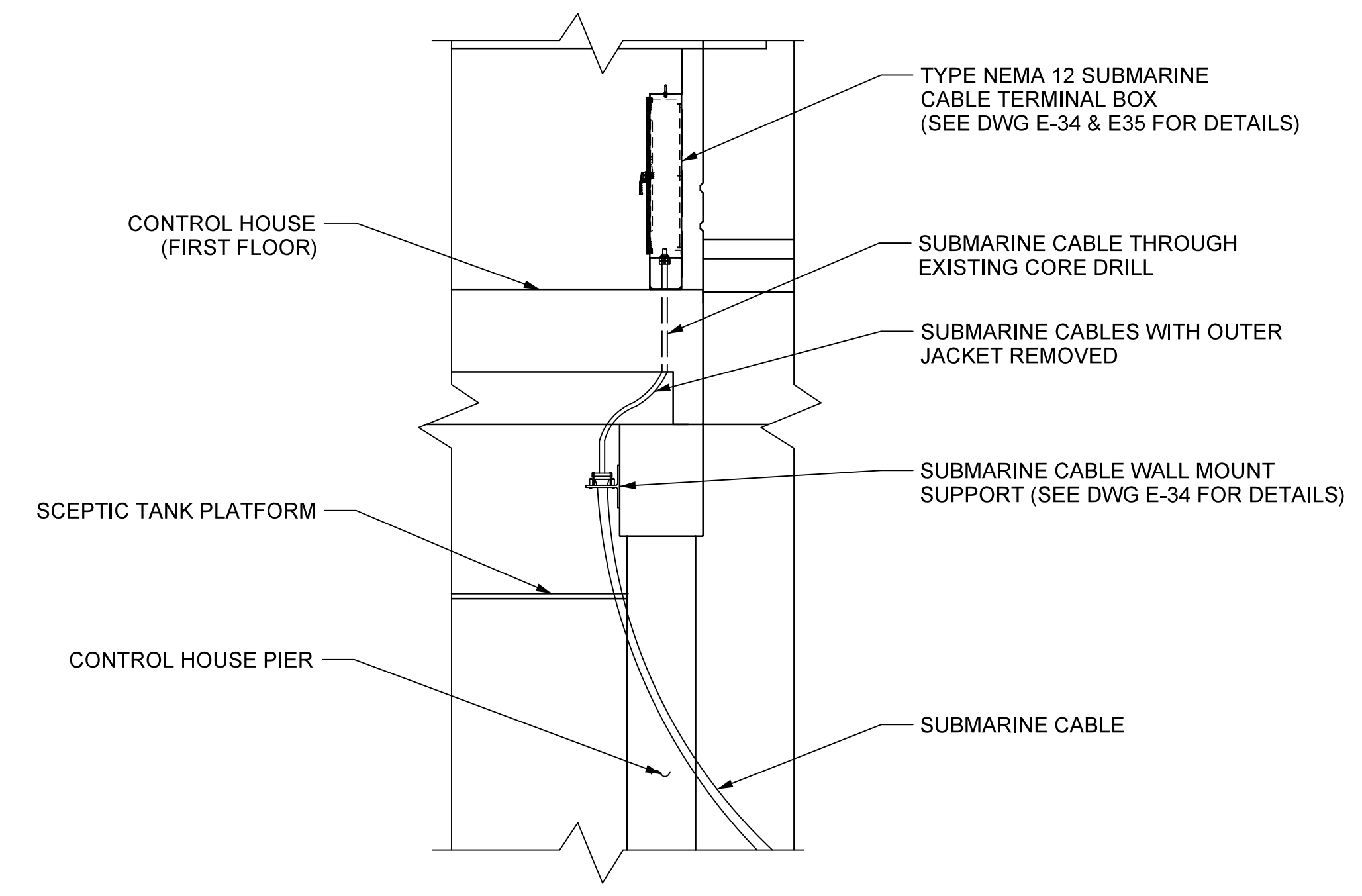
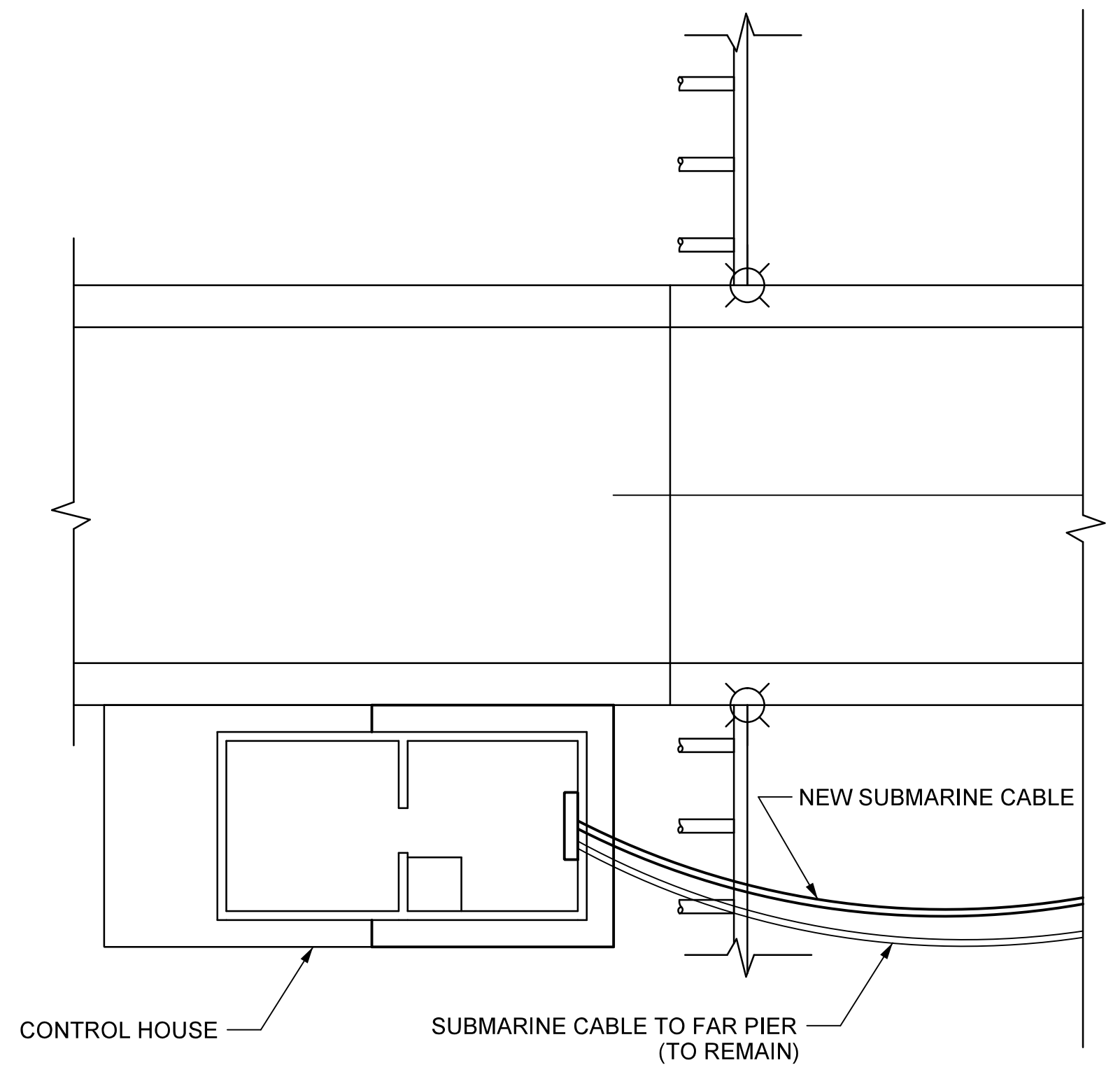


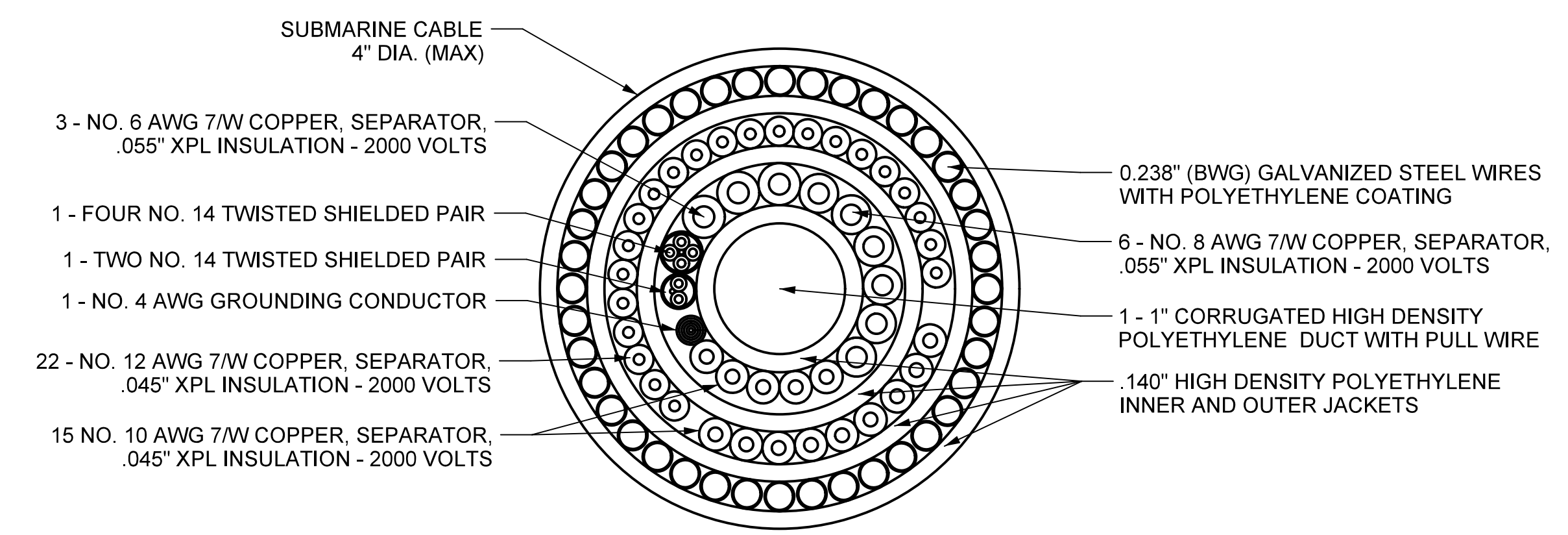
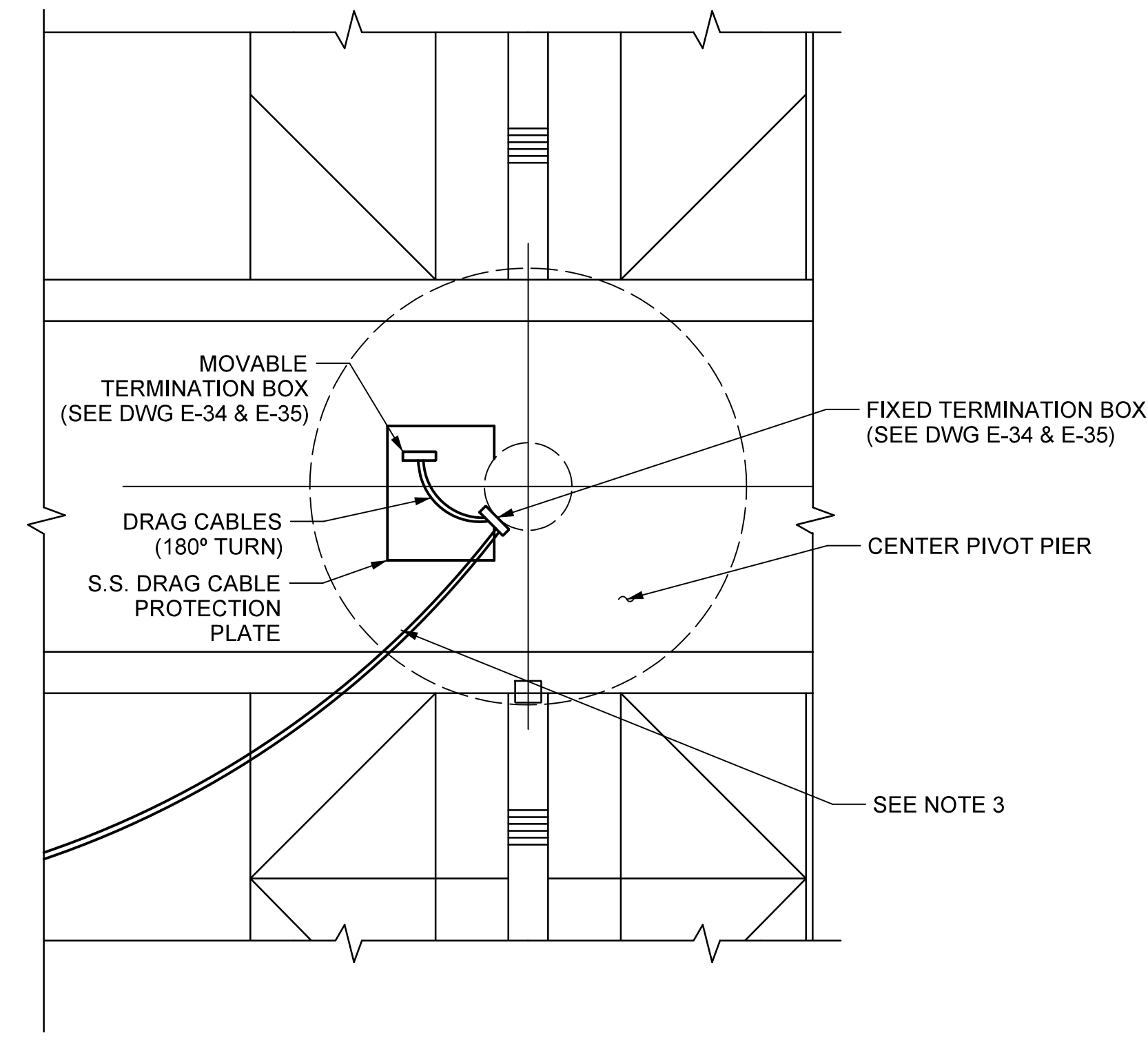
GENERAL ELEVATION
SCALE: NTS



CONTROL HOUSE SUBMARINE CABLE MOUNTING DETAILS
SCALE: 1/4" = 1'-0"



GENERAL PLAN
SCALE: NTS



SUBMARINE CABLE CROSS SECTION
SCALE: 1'-0" = 1'-0"

NOTES:

1. THE CONTRACTOR SHALL INSTALL THE NEW SUBMARINE CABLE BETWEEN THE CONTROL HOUSE AND THE PIVOT PIER PER NCDOT REQUIREMENTS.
2. SIX HEAVY DUTY MULTIMODE FIBER OPTIC CABLE SHALL BE PULLED THROUGH THE POLYETHYLENE DUCT.
3. CONTRACTOR SHALL INSTALL THE NEW SUBMARINE CABLE USING THE EXISTING CORE DRILL HOLE(S) ON THE PIVOT PIER.
4. DRAG CABLES SHALL CONSIST OF ALL THE CONDUCTORS IN THE SUBMARINE CABLE.
5. DRAG CABLE PROTECTION PLATE SHALL BE OF 316 STAINLESS STEEL BOLTED TO THE PIVOT PIER.

PROJECT NO. B-5936
TYRRELL COUNTY
BRIDGE NO: 7

STATE OF NORTH CAROLINA
DEPARTMENT OF TRANSPORTATION
RALEIGH

SUBMARINE CABLE LAYOUT

ALLIGATOR RIVER SWING SPAN

REVISIONS						SHEET NO.
NO	BY	DATE	NO	BY	DATE	TOTAL SHEETS
1			3			51
2			4			

DocuSigned by:
Scott Reynolds
9/14/2016

Hardesty & Hanover
engineering that moves you

SEAL
036065
A. REYNOLDS

DRAWN BY: _QIV DATE: 8/8/2016
CHECKED BY: _MJT DATE: 8/8/2016
DESIGN ENGINEER OF RECORD: _CHS DATE: 8/8/2016

DWG NUMBER	TOTAL DWGS	DOCUMENT NOT CONSIDERED FINAL UNLESS ALL SIGNATURES COMPLETED
49	90	