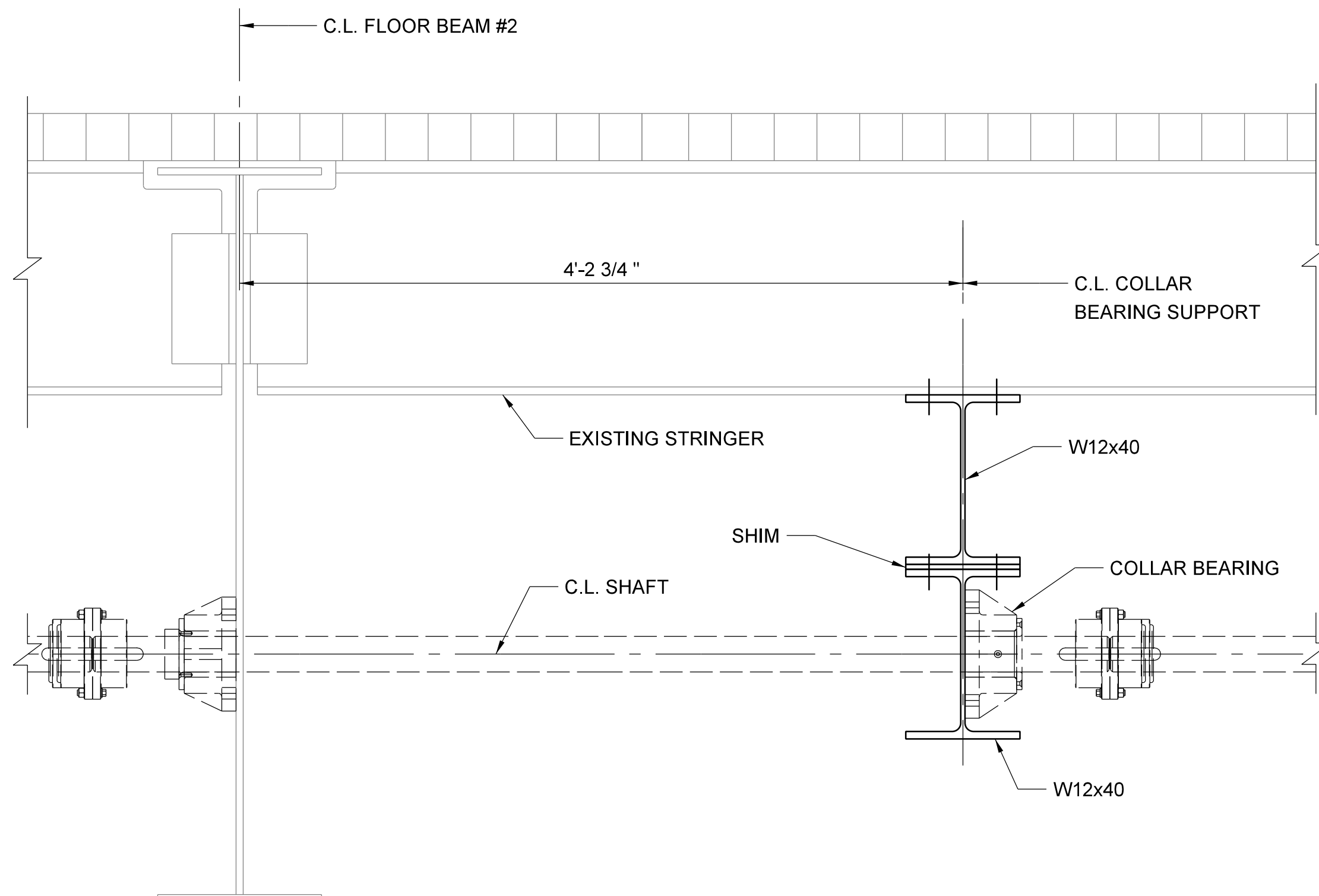
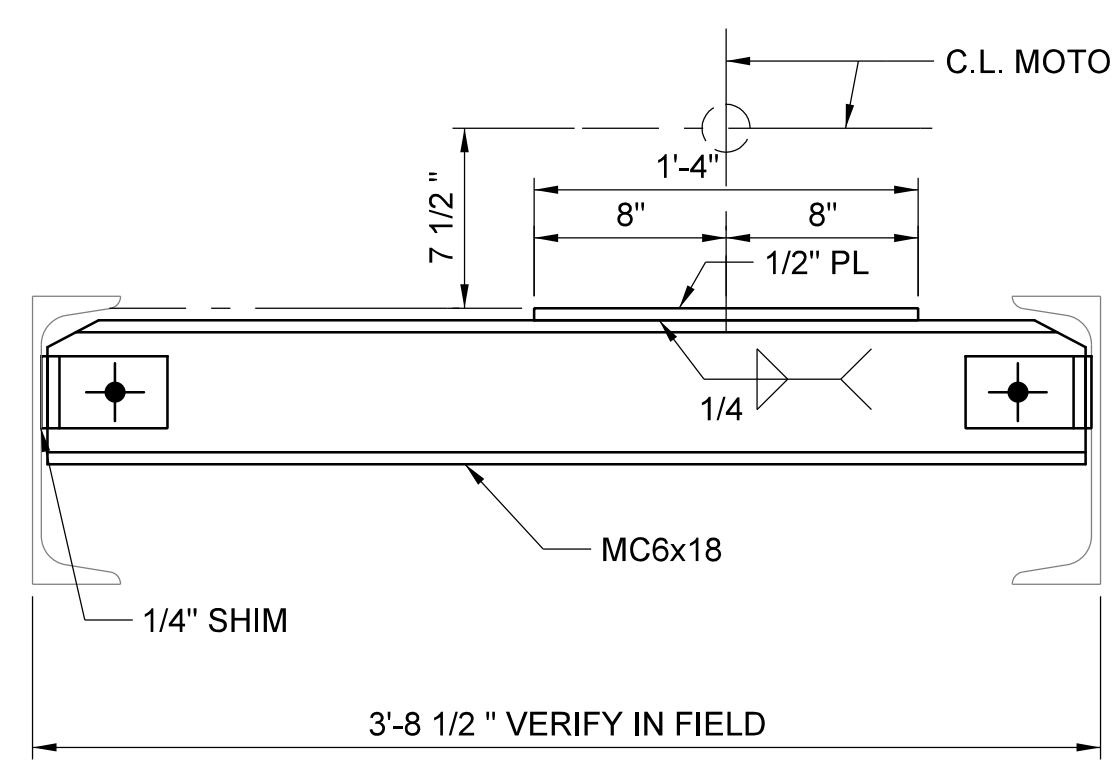


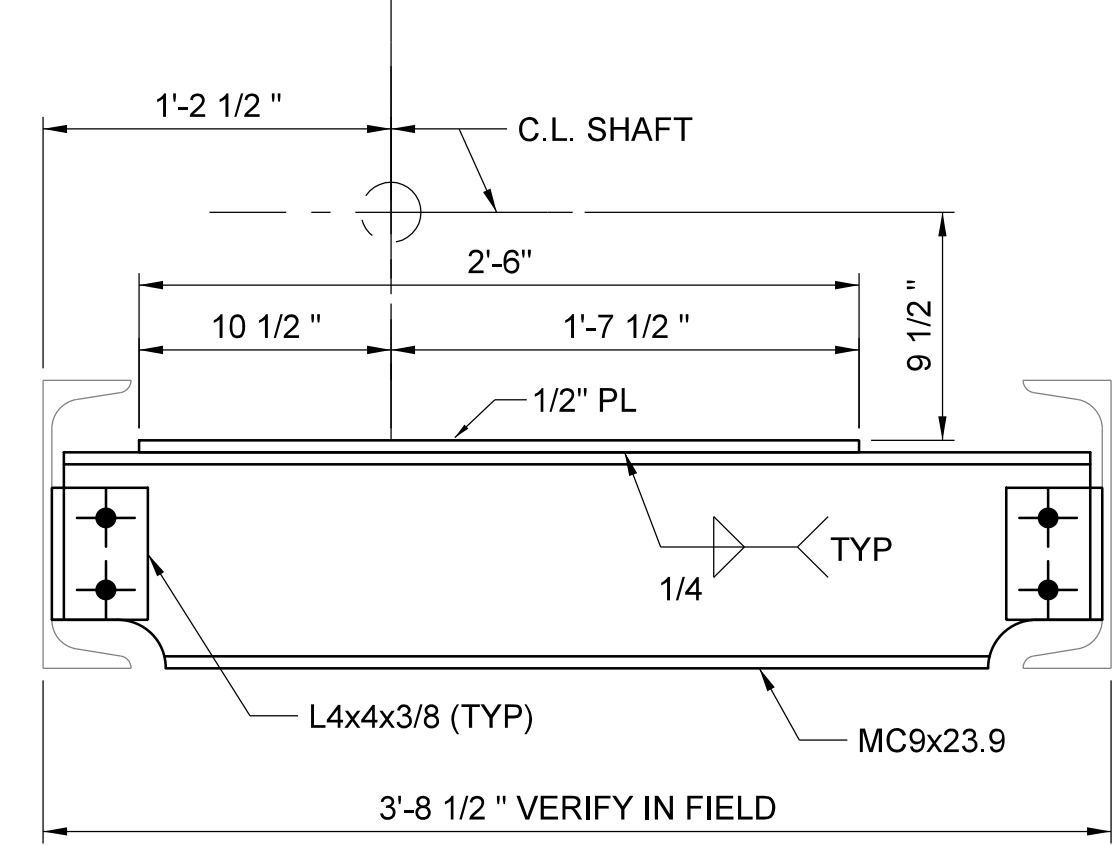
ELEVATION - WEDGE MACHINERY SUPPORTS
SCALE: 1 1/2" = 1'-0"



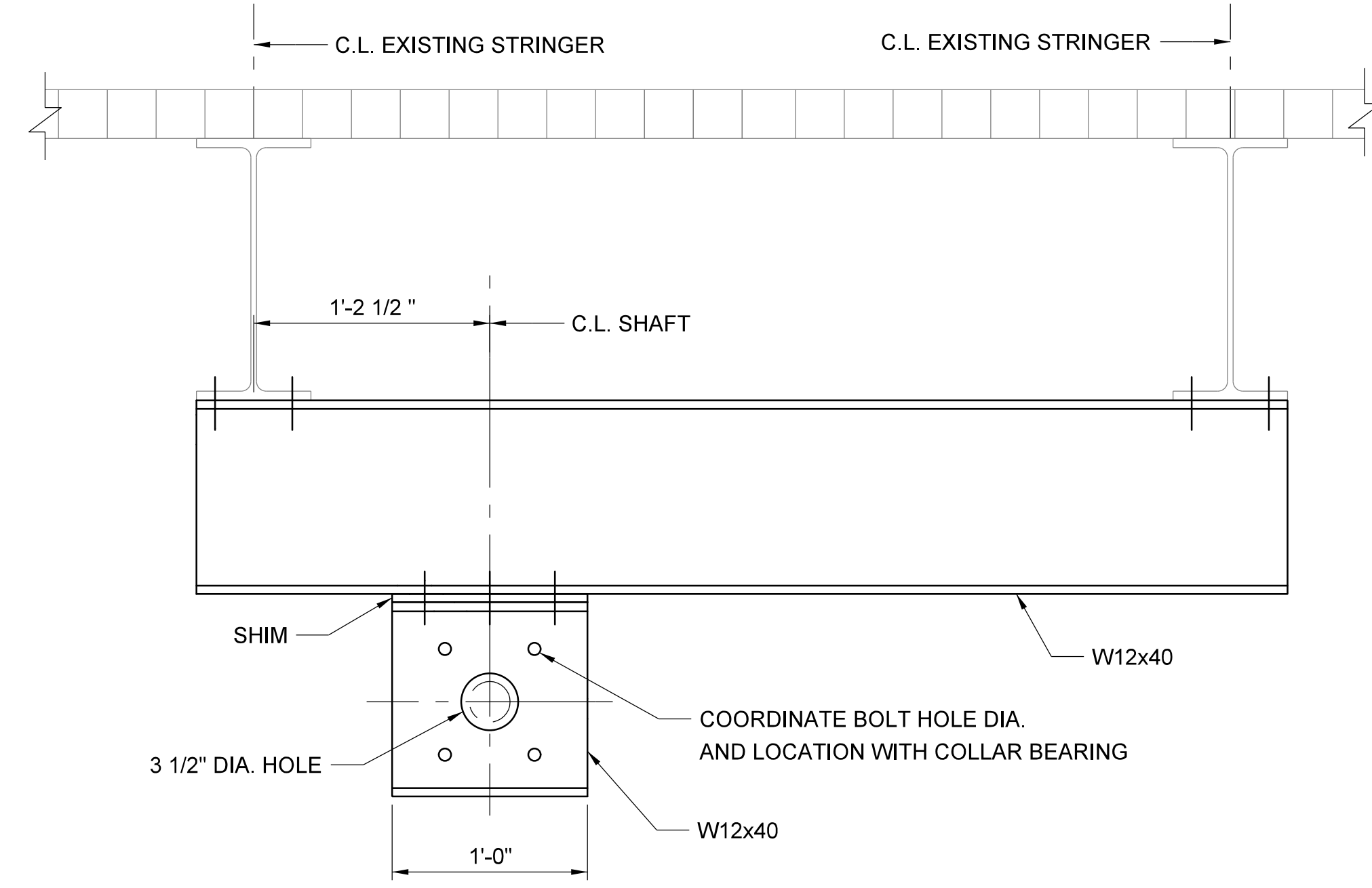
COLLAR BEARING SUPPORT
SCALE: 1 1/2" = 1'-0"



SECTION AT MOTOR
SCALE: 1 1/2" = 1'-0"



SECTION AT REDUCER
SCALE: 1 1/2" = 1'-0"



SECTION AT COLLAR BEARING
SCALE: 1 1/2" = 1'-0"

NOTES

1. THE CONTRACTOR SHALL PERFORM A FIELD SURVEY OF SUPPORT MEMBERS AND SUBMIT TO THE ENGINEER FOR REVIEW PRIOR TO FABRICATION OF NEW MACHINERY SUPPORTS.
2. EXISTING WEDGE MACHINERY SUPPORTS SHALL BE REMOVED AND DISPOSED. REMAINING EXISTING WELDS SHALL BE GROUND SMOOTH WITH THE BASE METAL. UN-USED BOLT HOLES SHALL BE FILLED WITH H.S. BOLTS OF SAME DIAMETER.
3. SIZE AND LOCATION OF SUPPORTS ARE FOR REFERENCE ONLY. THE CONTRACTOR SHALL DETAIL NEW MACHINERY SUPPORTS BASED ON FIELD SURVEY AND SHOP DRAWINGS OF ACTUAL MACHINERY FURNISHED IN THIS CONTRACT.
4. NEW MACHINERY SUPPORTS AND EXISTING SUPPORTS WHERE SHOWN SHALL RECEIVE SYSTEM 1 PAINT IN ACCORDANCE WITH NCDOT STANDARD SPECIFICATIONS.
5. ALL BOLTS SHALL BE H.S. 7/8" DIA. UNLESS NOTED OTHERWISE.
6. ALL MACHINERY MOUNTING SURFACES SHALL HAVE A 250 MICRO-INCH AND BE FLAT WITHIN 0.010 INCH. THICKNESS OF MOUNTING PLATES TO BE FINISHED ARE GIVEN FOR AFTER FINISHING.
7. UNLESS OTHERWISE NOTED, 1/2" SHIM PACK TO BE PROVIDED AT ALL MACHINERY MOUNTING SURFACES.

PROJECT NO. B-5936
TYRRELL COUNTY
 BRIDGE NO: 7

STATE OF NORTH CAROLINA
 DEPARTMENT OF TRANSPORTATION
 RALEIGH

WEDGE MACHINERY SUPPORTS

ALLIGATOR RIVER SWING SPAN

REVISIONS						SHEET NO.
NO.	BY:	DATE:	NO.	BY:	DATE:	S-3
1			3			TOTAL SHEETS
2			4			3

DRAWN BY: DMM DATE: 8/8/2016
 CHECKED BY: RH DATE: 8/8/2016
 DESIGN ENGINEER OF RECORD: GAF DATE: 8/8/2016

DocuSigned by:
Scott Reynolds
 PROFESSIONAL SEAL
 036065
 9/14/2016

HH Hardesty & Hanover
 engineering that moves you

DWG NUMBER	TOTAL DWGS
16	90

DOCUMENT NOT CONSIDERED FINAL UNLESS ALL SIGNATURES COMPLETED