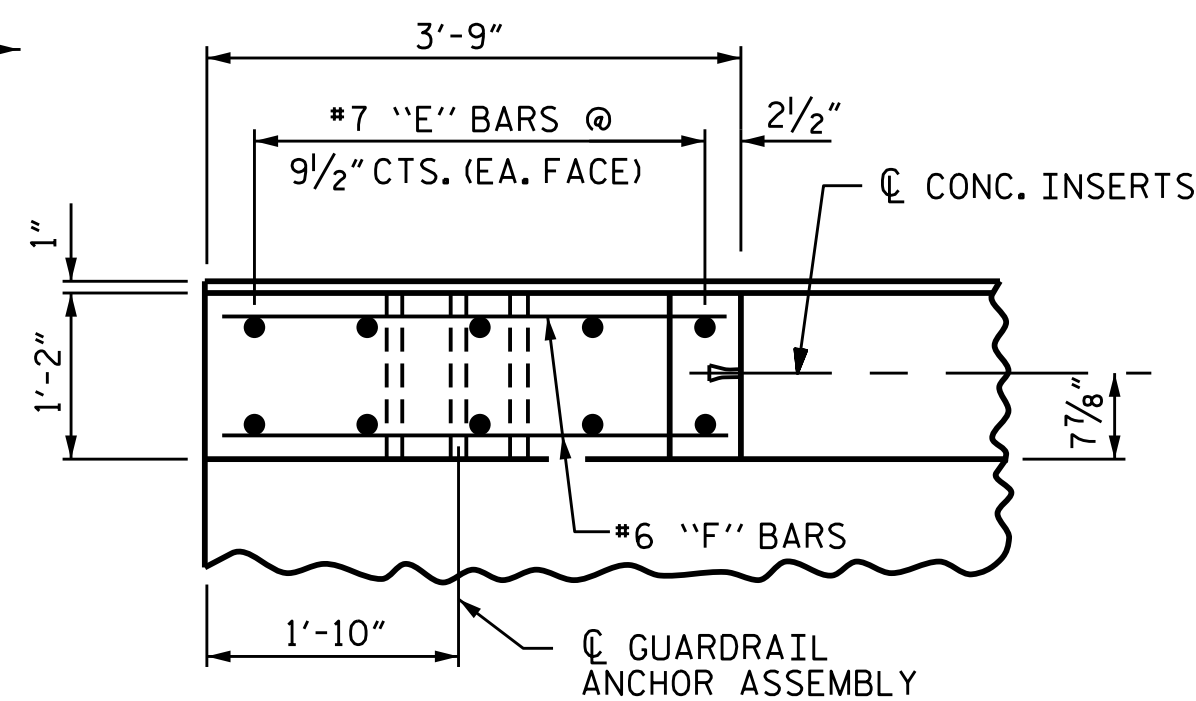
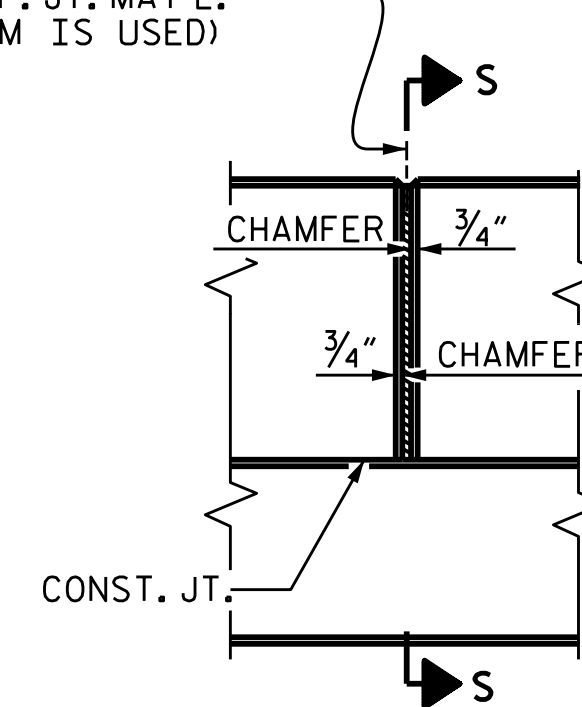


PLAN OF PARAPET

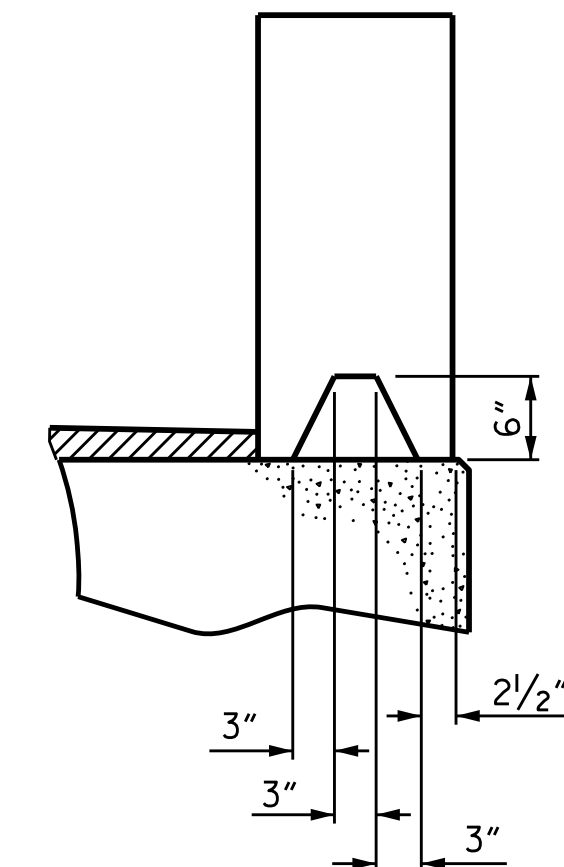


PLAN OF END POST

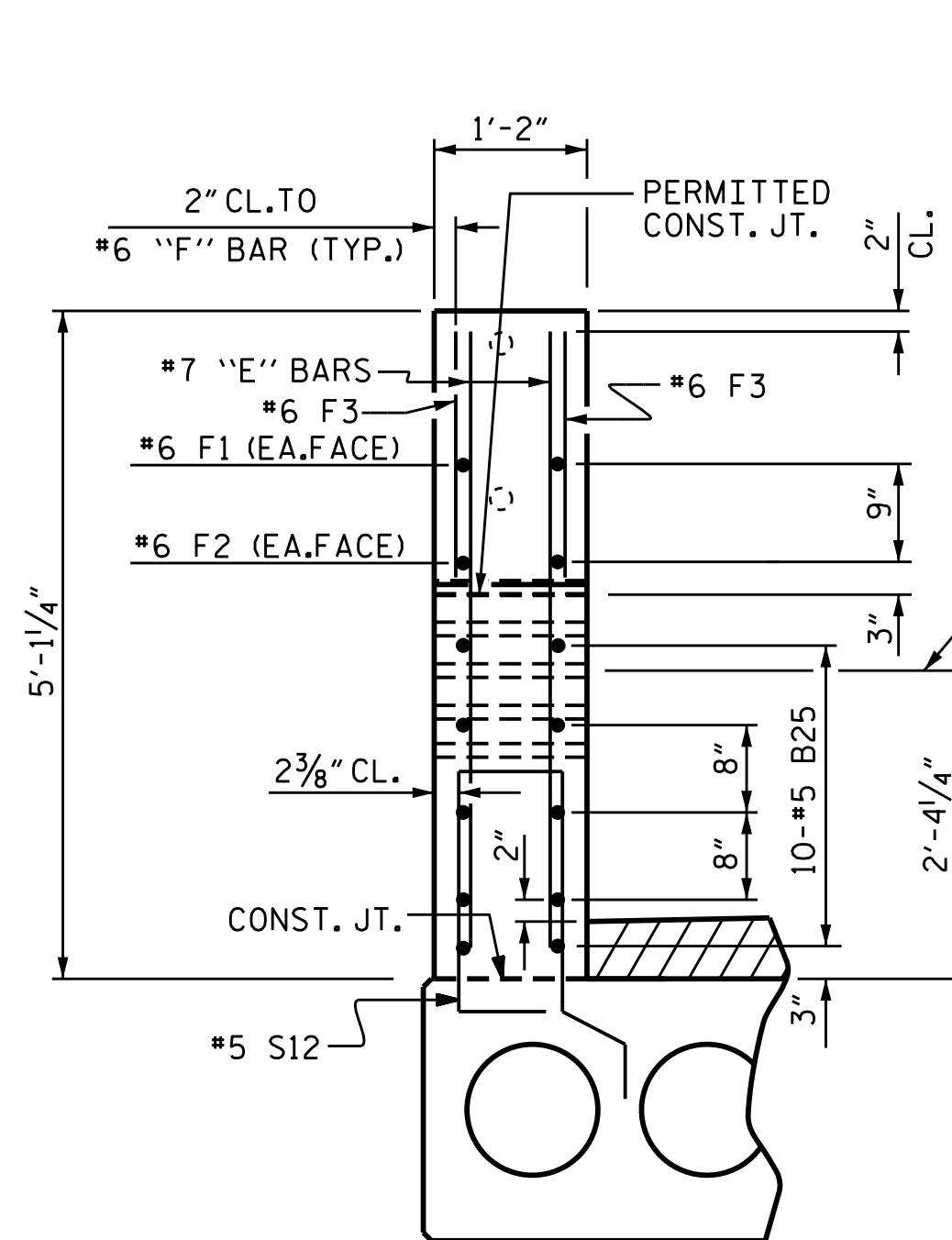
1/2" EXP. JT. MAT'L HELD IN PLACE WITH GALVANIZED NAILS. (NOTE: OMIT EXP. JT. MAT'L WHEN SLIP FORM IS USED)



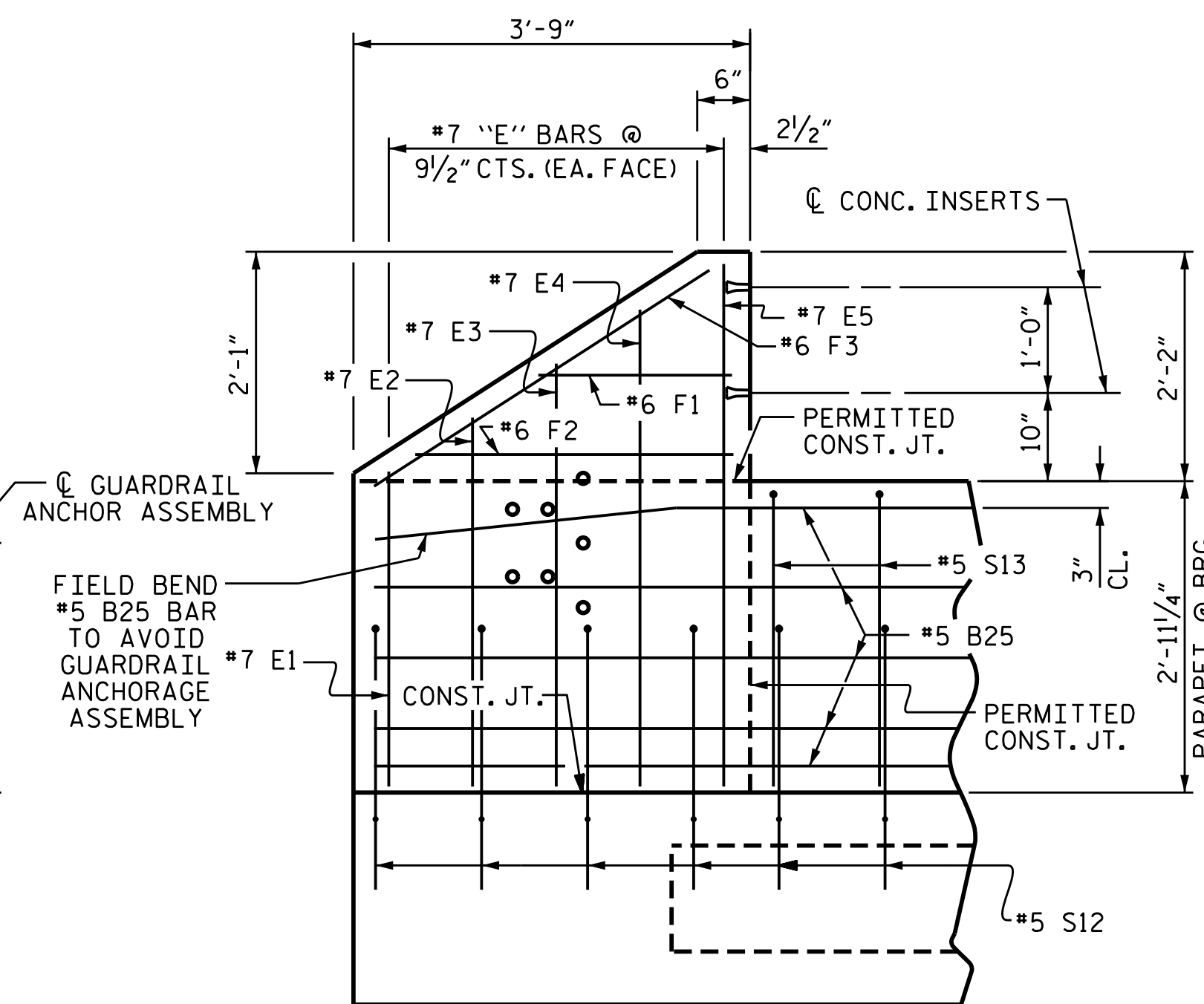
ELEVATION AT EXPANSION JOINTS



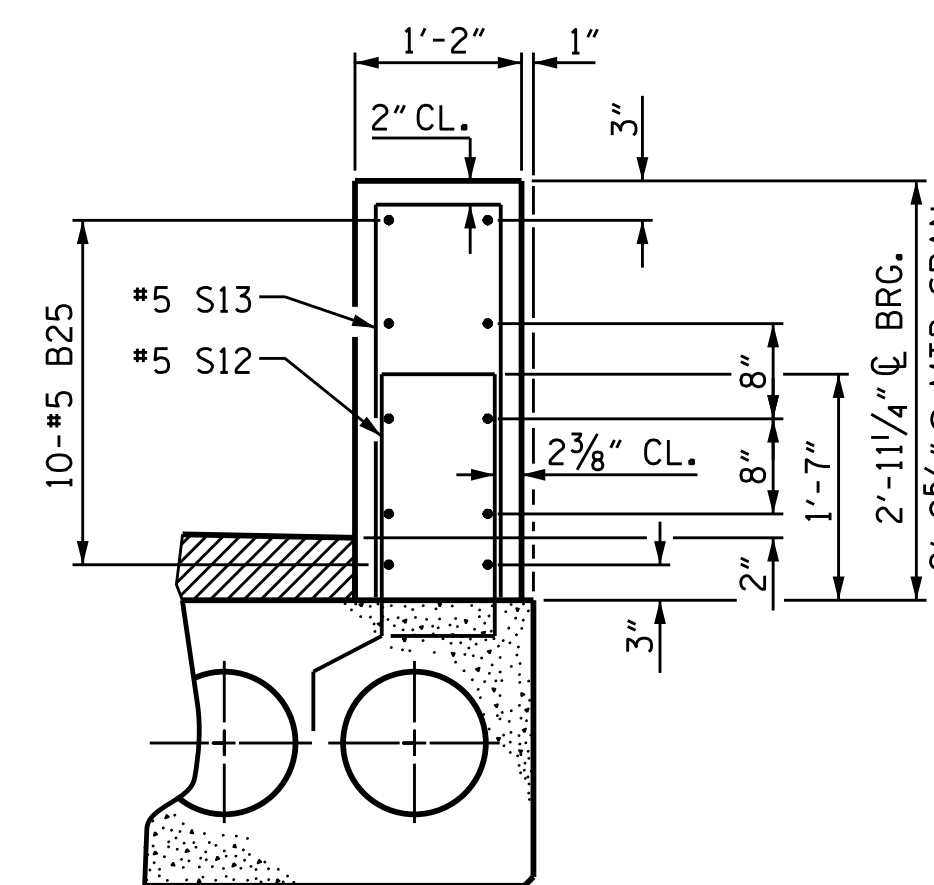
SECTION S-S AT DAM IN OPEN JOINT (THIS IS TO BE USED ONLY WHEN SLIP FORM IS USED)



END VIEW



ELEVATION



PARAPET SECTION

BILL OF MATERIAL FOR 2 PARAPETS & 4 END POSTS					
BAR	NO.	SIZE	TYPE	LENGTH	WEIGHT
*B25	60	#5	STR	22'-11"	1434
*E1	8	#7	STR	2'-10"	46
*E2	8	#7	STR	3'-4"	55
*E3	8	#7	STR	3'-10"	63
*E4	8	#7	STR	4'-4"	71
*E5	8	#7	STR	4'-9"	78
*F1	8	#6	STR	1'-9"	21
*F2	8	#6	STR	2'-11"	35
*F3	8	#6	STR	3'-3"	39
*S13	126	#5	1	5'-9"	756
* EPOXY COATED REINFORCING STEEL				LBS.	2,598
CLASS AA CONCRETE				CU.YDS.	18.2
CONCRETE PARAPET				LIN. FT.	140.00
BAR TYPE					
ALL BAR DIMENSIONS ARE OUT TO OUT					

PARAPET AND END POST FOR TWO BAR RAIL

PROJECT NO. B-5343  
 ROCKINGHAM COUNTY  
 STATION: 16+60.00 -L-



DocuSigned by: W. ALFORD  
 9/21/2016

STATE OF NORTH CAROLINA DEPARTMENT OF TRANSPORTATION RALEIGH					
1'-2" X 2'-11 1/4" CONCRETE PARAPETS AND END POSTS					
REVISIONS					SHEET NO.
NO.	BY:	DATE:	NO.	BY:	DATE:
1			3		
2			4		
					S-11
					TOTAL SHEETS 18

DRAWN BY : H. B. DESAI DATE : 10/8/15  
 CHECKED BY : E. I. OMILE DATE : 11/2/15

DOCUMENT NOT CONSIDERED FINAL UNLESS ALL SIGNATURES COMPLETED