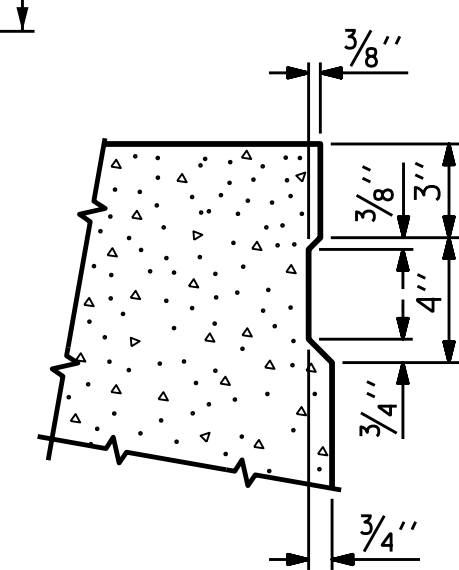


HALF SECTION THROUGH VOIDS
 HALF SECTION AT INTERMEDIATE DIAPHRAGMS
TYPICAL SECTION

* THE MAXIMUM PARAPET HEIGHT AND CONCRETE WEARING SURFACE THICKNESS IS SHOWN. THE HEIGHT OF THE PARAPET AND CONCRETE WEARING SURFACE THICKNESS VARIES WHILE THE TOP OF THE PARAPET FOLLOWS THE PROFILE OF THE GUTTERLINE. FOR PARAPET HEIGHT DETAILS AND CONCRETE WEARING SURFACE THICKNESS, SEE TABLES.

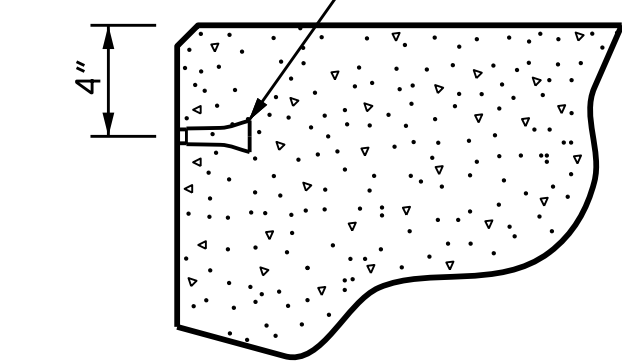
CONCRETE WEARING SURFACE THICKNESS	
@ CL BEARING	@ MID-SPAN
5 1/4"	3 5/8"

PARAPET HEIGHT	
@ CL BEARING	@ MID-SPAN
2'-11 1/4"	2'-9 5/8"

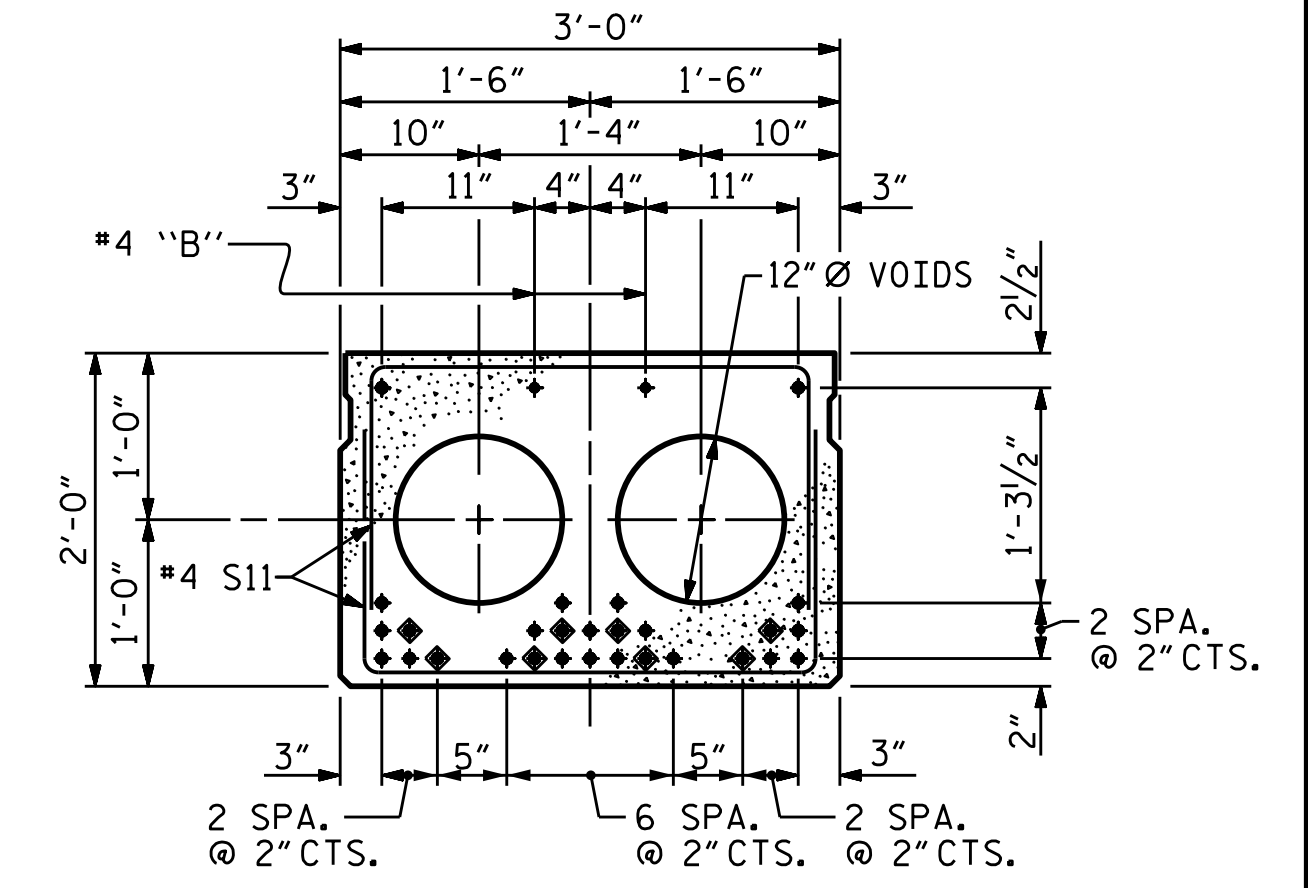


SHEAR KEY DETAIL
 NOTE: OMIT SHEAR KEY ON OUTSIDE FACE OF EXTERIOR CORED SLABS.

PERMITTED THREADED INSERT CAST IN OUTSIDE FACE OF EXTERIOR UNIT AND RECESSED 3/8" SIZE TO BE DETERMINED BY CONTRACTOR.



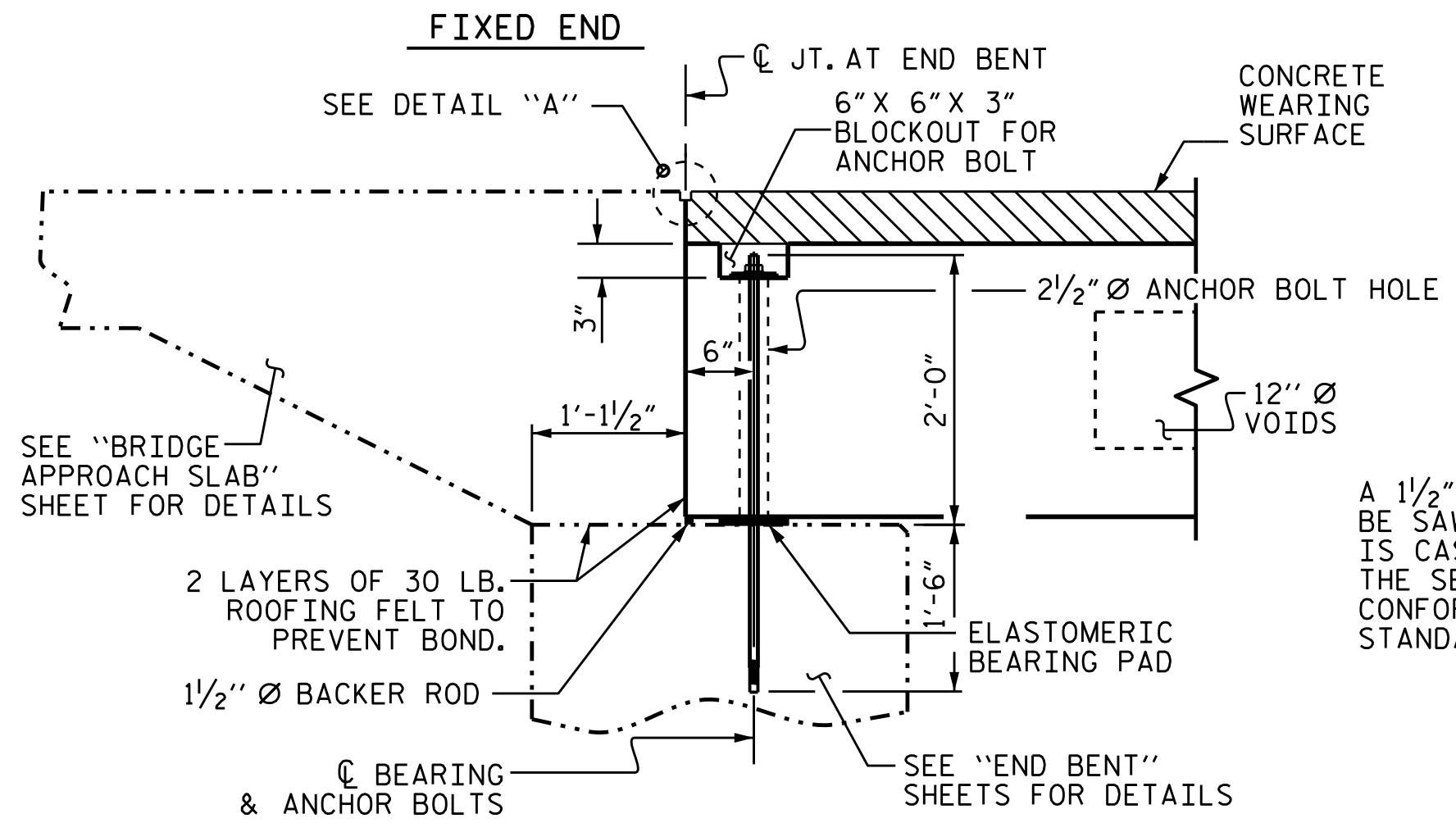
THREADED INSERT DETAIL



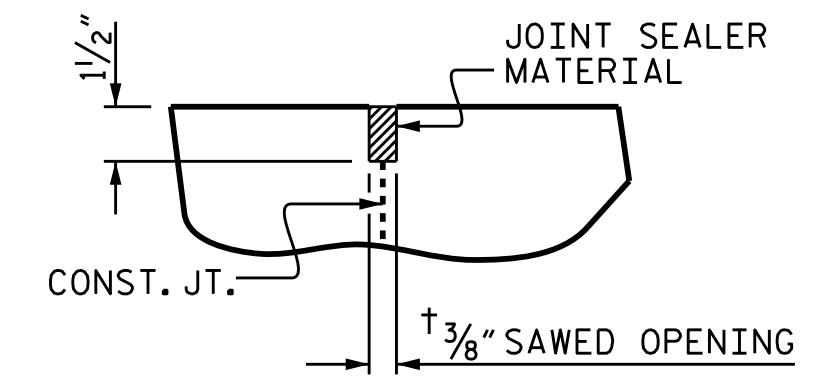
INTERIOR SLAB SECTION (70' UNIT)
 (28 STRANDS REQUIRED)
 0.6" Ø LOW RELAXATION STRAND LAYOUT

◆ BOND SHALL BE BROKEN ON THESE STRANDS FOR A DISTANCE OF 12'-0" FROM END OF CORED SLAB UNIT. SEE STANDARD SPECIFICATIONS, ARTICLE 1078-7.

DEBONDING LEGEND

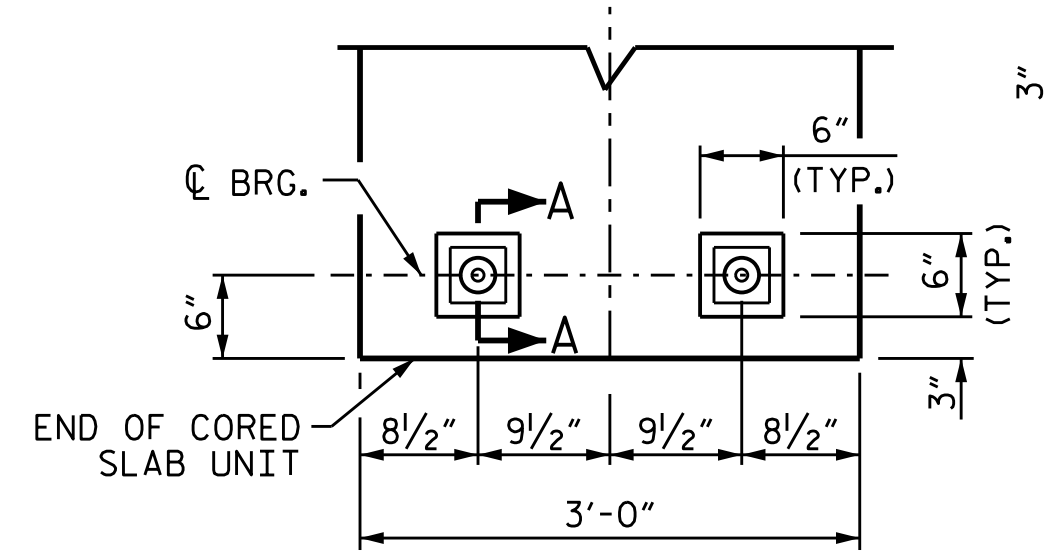


SECTION AT END BENT

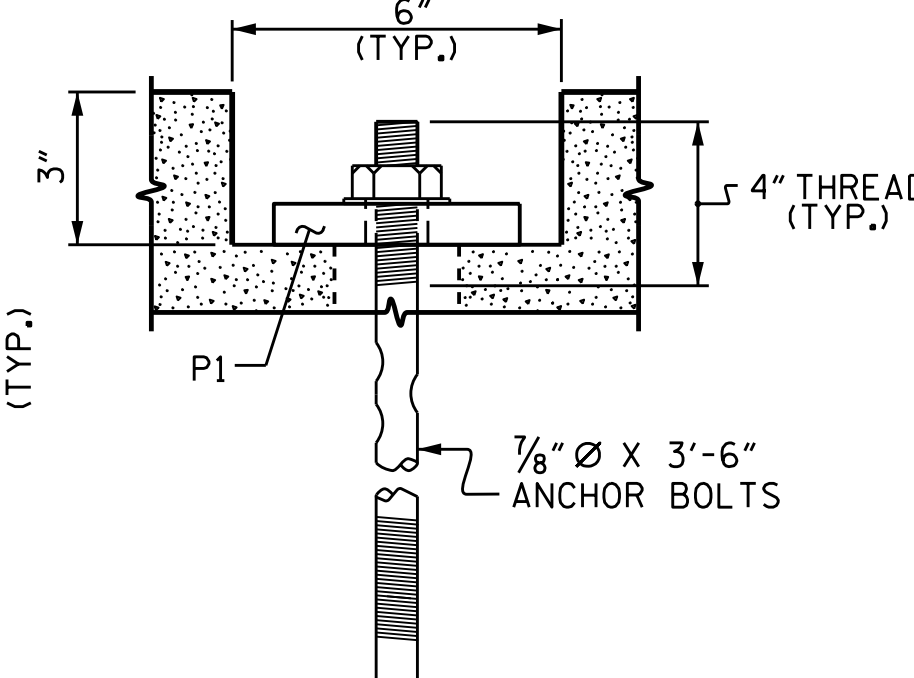


DETAIL "A"

A 1/2" DEEP CONTRACTION JOINT AT EACH END BENT SHALL BE SAWED NO MORE THAN 12 HOURS AFTER THE APPROACH SLAB IS CAST. THE JOINT SHALL BE CLEANED OF ALL DEBRIS BEFORE THE SEALANT IS APPLIED. THE JOINT SEALER MATERIAL SHALL CONFORM TO THE REQUIREMENTS OF SECTION 1028-3 OF THE STANDARD SPECIFICATIONS.



TYPICAL PLAN



SECTION A-A

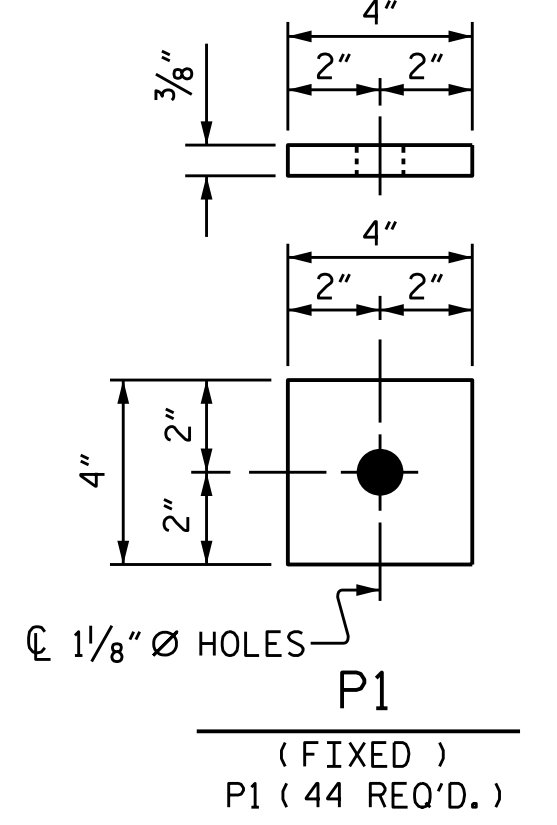
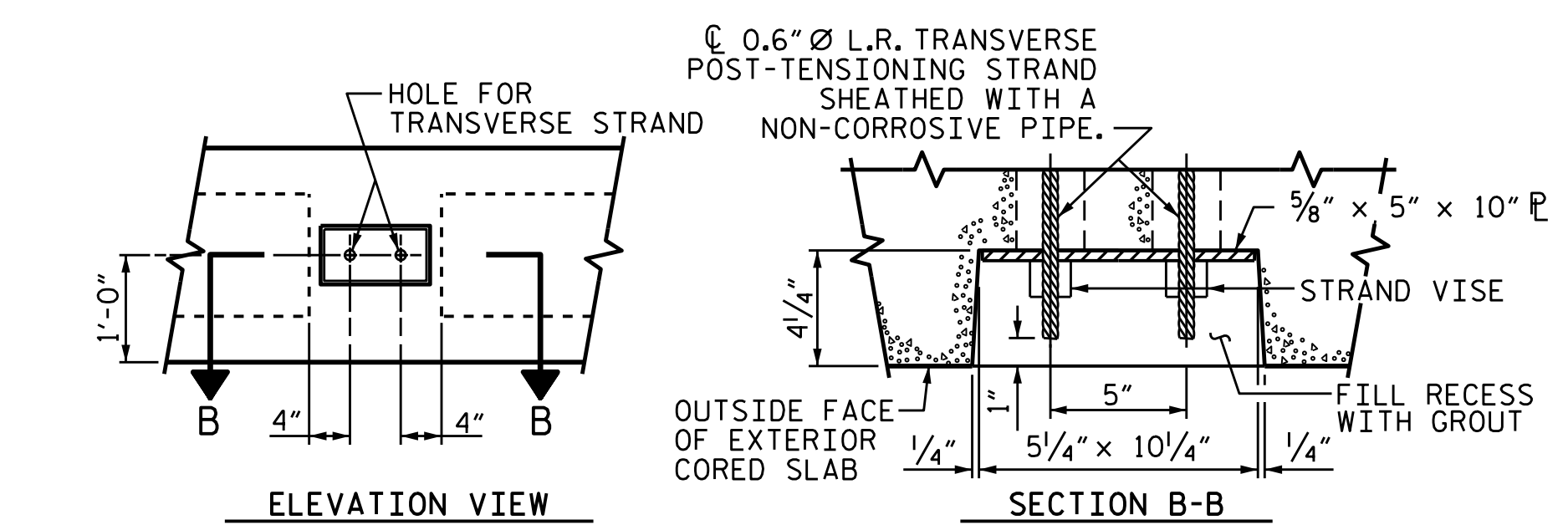
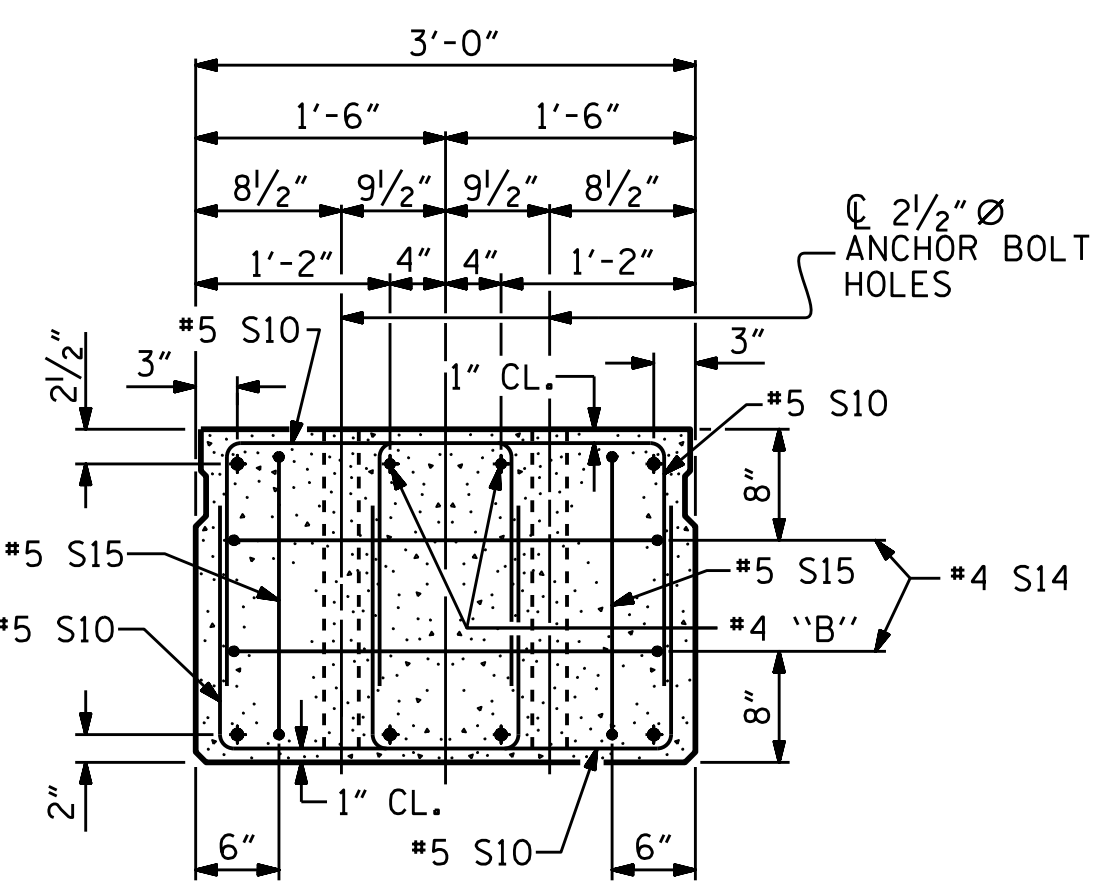


PLATE DETAILS
 (FIXED) P1 (44 REQ'D.)

BLOCKOUT DETAIL FOR ANCHOR BOLTS

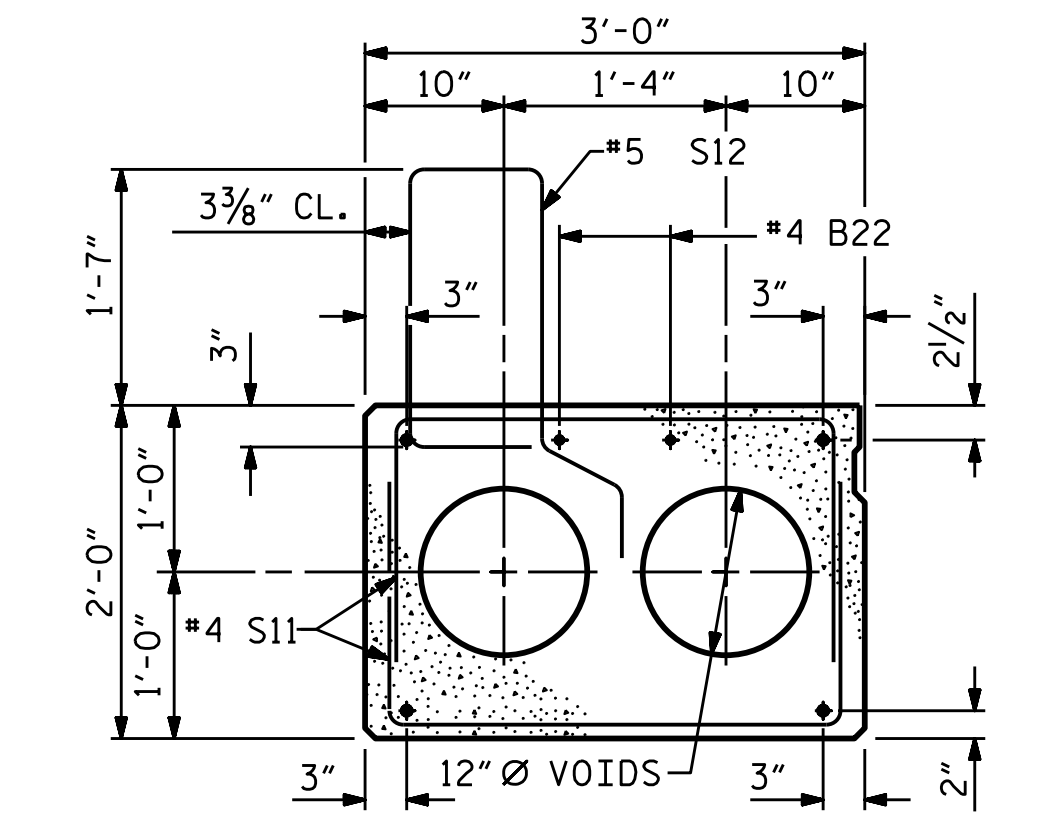


GROUTED RECESS AT END OF POST-TENSIONED STRAND CORED SLABS



END ELEVATION

SHOWING PLACEMENT OF DOUBLE STIRRUPS AND LOCATION OF ANCHOR BOLT HOLES. (STRAND LAYOUT NOT SHOWN). INTERIOR SLAB UNIT SHOWN-EXTERIOR SLAB UNIT SIMILAR EXCEPT SHEAR KEY LOCATION. (ADJUST REINFORCING STEEL AS NECESSARY TO AVOID BLOCKOUT.)

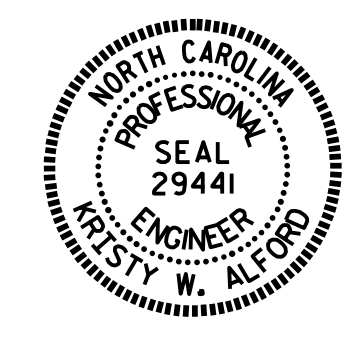


EXTERIOR SLAB SECTION

(FOR PRESTRESSED STRAND LAYOUT, SEE INTERIOR SLAB SECTION.)

PROJECT NO. B-5343
 ROCKINGHAM COUNTY
 STATION: 16+60.00 -L-

SHEET 1 OF 3



STATE OF NORTH CAROLINA
 DEPARTMENT OF TRANSPORTATION
 RALEIGH
 3'-0" X 2'-0"
 PRESTRESSED CONCRETE
 CORED SLAB UNIT

ASSEMBLED BY : H. B. DESAI	DATE : 10/8/15
CHECKED BY : E. I. OMILE	DATE : 10/30/15
DRAWN BY : MAA	6/10
CHECKED BY : MKT	7/10
REV. 9/14	MAA/TMG

DOCUMENT NOT CONSIDERED FINAL UNLESS ALL SIGNATURES COMPLETED

REVISIONS		SHEET NO.	
NO.	DATE	NO.	S-5
1		3	
2		4	