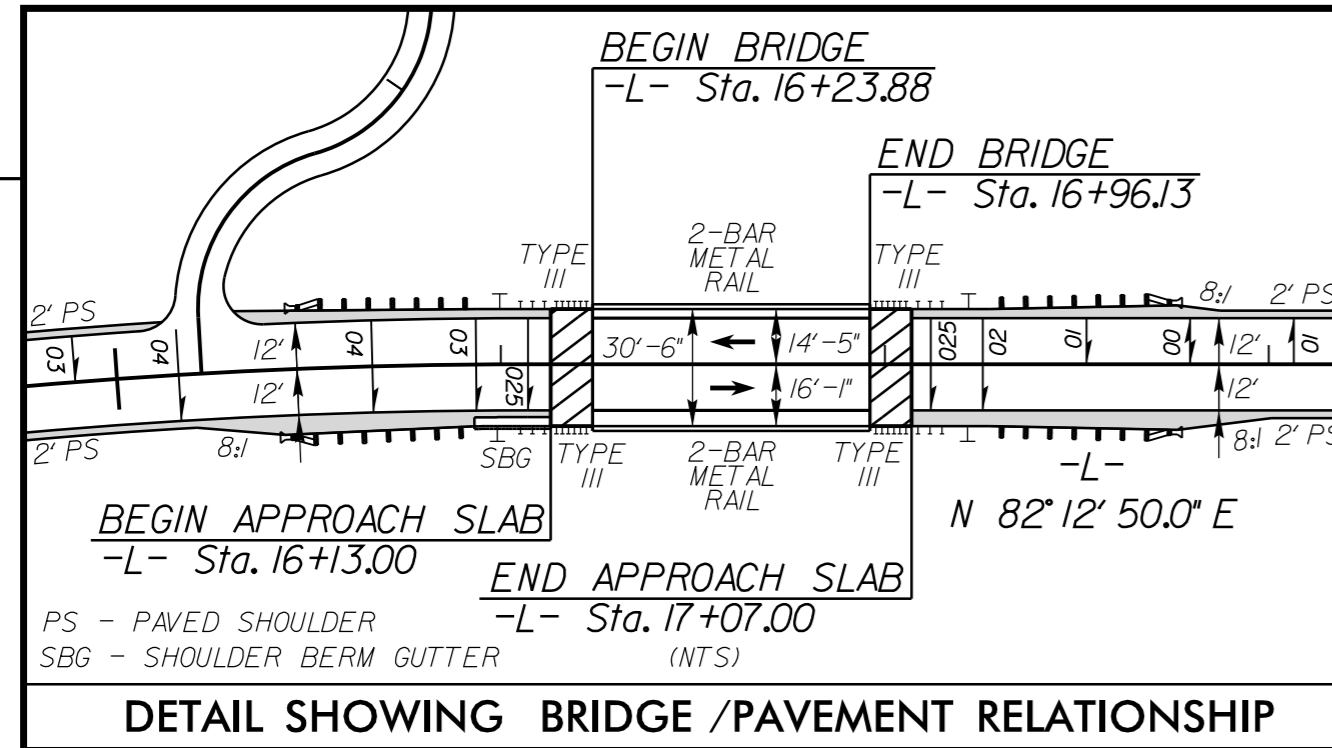
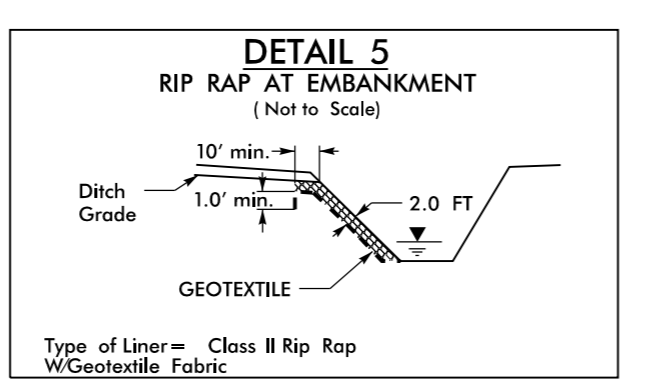
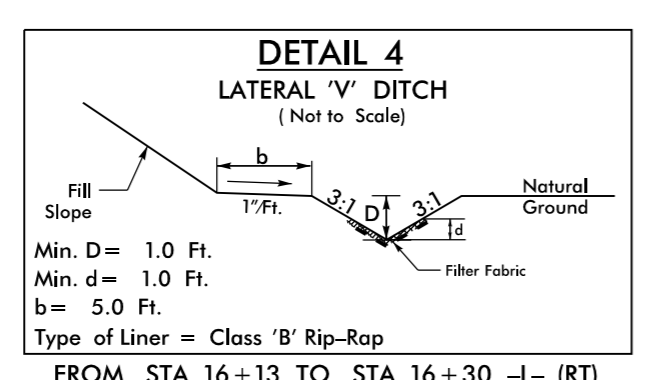
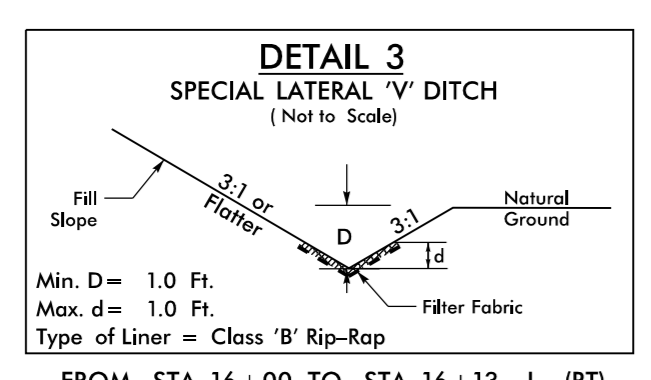
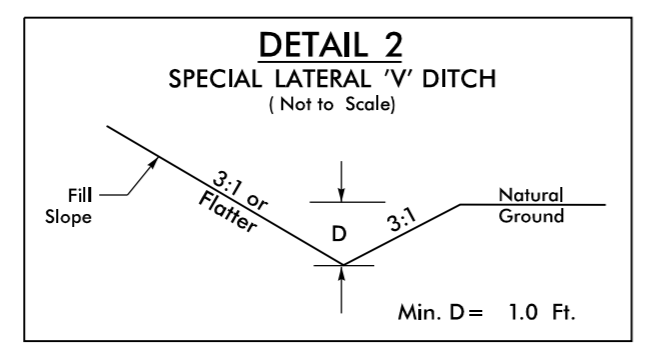
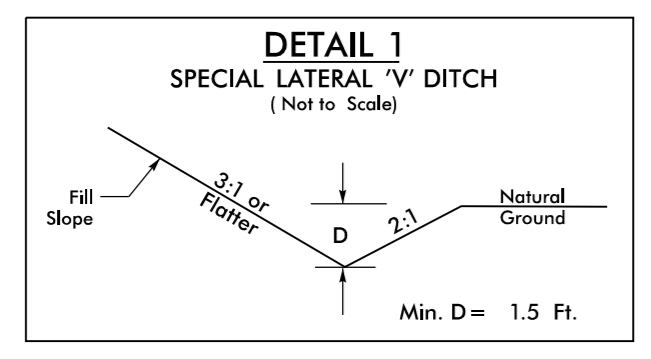
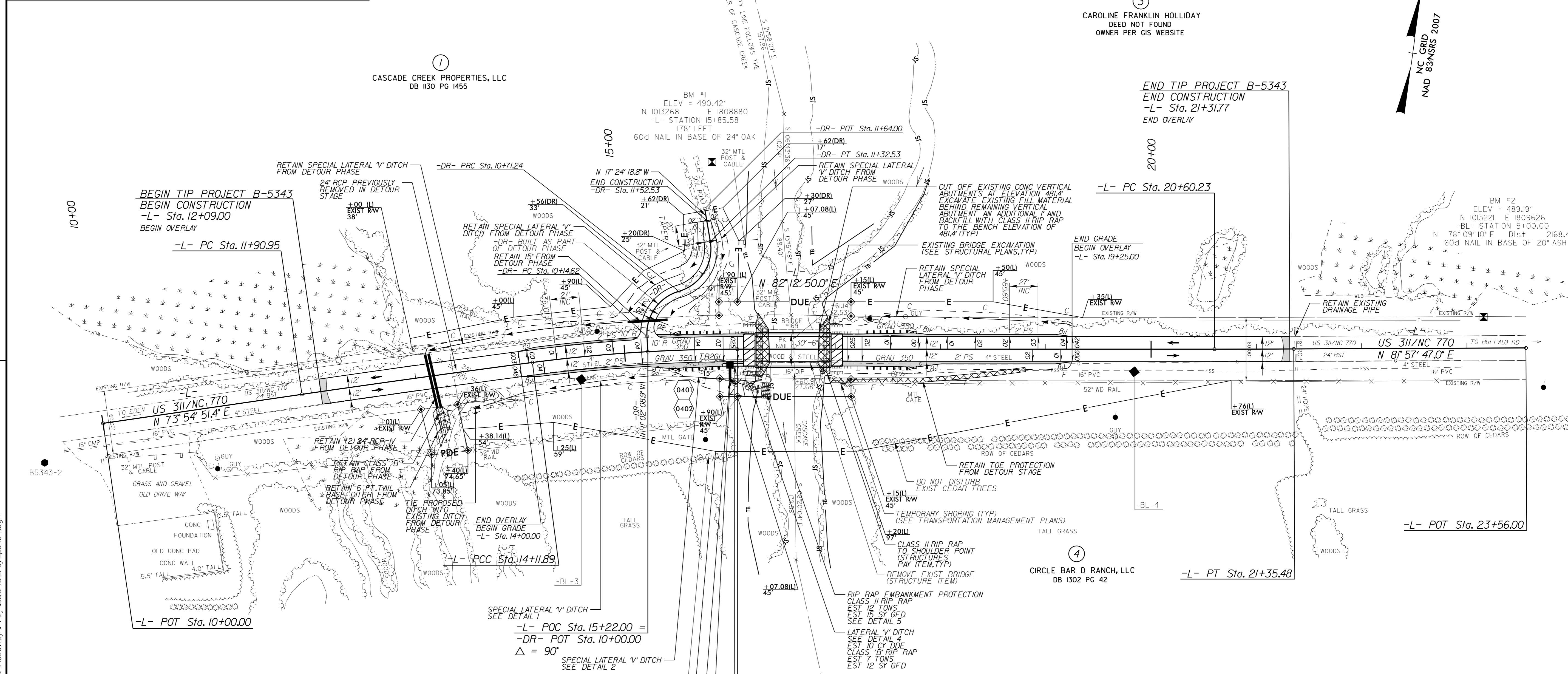


PROJECT REFERENCE NO. B-5343	SHEET NO. 4
RW SHEET NO.	
ROADWAY DESIGN ENGINEER	HYDRAULICS ENGINEER
DOCUMENT NOT CONSIDERED FINAL UNLESS ALL SIGNATURES COMPLETED	



-L-		-DR-	
PI Sta 13+01.42	PI Sta 15+09.62	PI Sta 20+97.86	PI Sta 10+47.99
$\Delta = 0^{\circ} 50' 38.2''$ (RT)	$\Delta = 7^{\circ} 27' 20.4''$ (RT)	$\Delta = 0^{\circ} 15' 03.0''$ (LT)	$\Delta = 96^{\circ} 05' 57.3''$ (RT)
D = 220.94'	D = 349.110'	D = 75.25'	D = 190.59' 09.4"
L = 220.94'	L = 195.19'	L = 75.25'	L = 50.32'
T = 110.47'	T = 97.73'	T = 37.63'	T = 33.38'
R = 15,000.00'	R = 1,500.00'	R = 17,188.73'	R = 51.40'
DS = 60 MPH	DS = 60 MPH	DS = 60 MPH	DS = 15 MPH
SE = EXIST	SE = 0.04	SE = EXIST	SE = NC
RO = EXIST	RO = 108'	RO = EXIST	RO = N/A

REVISIONS



SEE SHEET 6 FOR -L- PROFILE
 SEE SHEET 6 FOR -DR- PROFILE
 SEE SHEETS SITHRU SIB FOR STRUCTURE PLANS

8/5/2016 K:\PAL_Roadway\101036275 - B-5343\Roadway\Proj\B5343_rdy_dsl104.dgn