

ROADWAY STANDARD DRAWINGS

THE FOLLOWING ROADWAY STANDARDS AS SHOWN IN "ROADWAY STANDARD DRAWINGS" - PROJECT SERVICES UNIT - N.C. DEPARTMENT OF TRANSPORTATION - RALEIGH, N.C., DATED 2012 ARE APPLICABLE TO THIS PROJECT AND BY REFERENCE HEREBY ARE CONSIDERED A PART OF THESE PLANS:

| STD. NO. | TITLE |
|----------|--|
| 904.20 | SECONDARY SIGN MOUNTING |
| 1101.01 | WORK ZONE ADVANCE WARNING SIGNS |
| 1101.02 | TEMPORARY LANE CLOSURES |
| 1101.03 | TEMPORARY ROAD CLOSURES |
| 1101.04 | TEMPORARY SHOULDER CLOSURES |
| 1101.11 | TRAFFIC CONTROL DESIGN TABLES |
| 1110.01 | STATIONARY WORK ZONE SIGNS |
| 1110.02 | PORTABLE WORK ZONE SIGNS |
| 1115.01 | FLASHING ARROW BOARDS |
| 1130.01 | DRUM |
| 1135.01 | CONES |
| 1145.01 | BARRICADES |
| 1150.01 | FLAGGING DEVICES |
| 1160.01 | TEMPORARY CRASH CUSHION |
| 1165.01 | WORK VEHICLE LIGHTING SYSTEMS AND TMA DELINEATION |
| 1170.01 | POSITIVE PROTECTION |
| 1180.01 | SKINNY-DRUM |
| 1205.01 | PAVEMENT MARKINGS - LINE TYPES & OFFSETS |
| 1205.02 | PAVEMENT MARKINGS - TWO-LANE & MULTI-LANE ROADWAYS |
| 1205.04 | PAVEMENT MARKINGS - INTERSECTIONS |
| 1205.05 | PAVEMENT MARKINGS - TURN LANES |
| 1205.06 | PAVEMENT MARKINGS - LANE DROPS |
| 1205.08 | PAVEMENT MARKINGS - SYMBOLS AND WORD MESSAGES |
| 1205.09 | PAVEMENT MARKINGS - PAINTED ISLANDS |
| 1250.01 | RAISED PAVEMENT MARKERS - INSTALLATION SPACING |
| 1251.01 | RAISED PAVEMENT MARKERS - PERMANENT AND TEMPORARY |
| 1261.01 | GUARDRAIL AND BARRIER DELINEATORS - INSTALLATION SPACING |
| 1261.02 | GUARDRAIL AND BARRIER DELINEATORS - TYPES AND MOUNTING |
| 1262.01 | GUARDRAIL END DELINEATION |

GENERAL

- DIRECTION OF TRAFFIC FLOW
- DIRECTION OF PEDESTRIAN TRAFFIC FLOW
- EXIST. PVMT.
- NORTH ARROW
- PROPOSED PVMT.

- WORK AREA
- REMOVAL
- WEDGING/OVERLAY OF EXIST
- ONGOING CONSTRUCTION
- TEMPORARY PAVEMENT

TRAFFIC CONTROL DEVICES

- BARRICADE (TYPE III)
- CONE
- DRUM SKINNY DRUM TUBULAR MARKER
- TEMPORARY CRASH CUSHION
- FLASHING ARROW BOARD (TYPE C)
- FLAGGER
- LAW ENFORCEMENT
- TRUCK MOUNTED ATTENUATOR (TMA)
- PORTABLE CHANGEABLE MESSAGE SIGN
- PORTABLE CONCRETE BARRIER (P.C.B.)
- WATER FILLED BARRIER (W.F.B.)
- ORANGE CONSTRUCTION FENCING

TEMPORARY SIGNING

- PORTABLE SIGN
- STATIONARY SIGN
- STATIONARY OR PORTABLE SIGN

SIGNALS

- EXISTING
- PROPOSED
- TEMPORARY

PAVEMENT MARKINGS

- EXISTING LINES
- TEMPORARY LINES

PAVEMENT MARKERS

- CRYSTAL/CRYSTAL
- CRYSTAL/RED
- YELLOW/YELLOW

PAVEMENT MARKING SYMBOLS

- PAVEMENT MARKING SYMBOLS

LEGEND

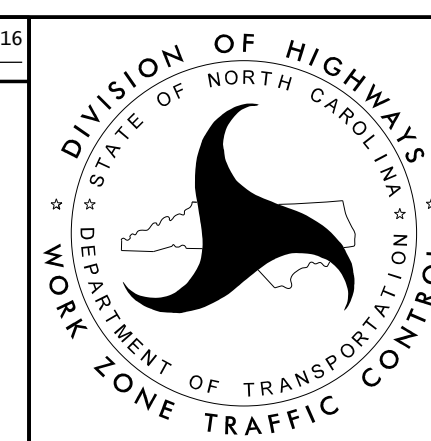
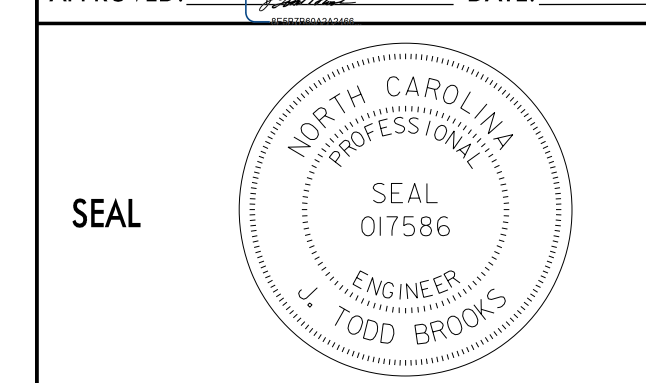
TEMPORARY PAVEMENT MARKING

| | | | |
|-----|---|-----------------|----|
| PA | WHITE EDGE LINE | PAINT (4") | LF |
| PB | YELLOW EDGE LINE | PAINT (4") | LF |
| PC | 10 FT. WHITE SKIP | PAINT (4") | LF |
| PD | 3 FT. WHITE MINISKIP | PAINT (4") | LF |
| PE | WHITE LANE LINE | PAINT (4") | LF |
| PF | 10 FT. YELLOW SKIP | PAINT (4") | LF |
| PH | YELLOW CENTER LINE | PAINT (4") | LF |
| PI | YELLOW DOUBLE CENTER LINE | PAINT (4") | LF |
| PN | WHITE GORELINE | PAINT (8") | LF |
| PO | WHITE DIAGONAL | PAINT (8") | LF |
| PP | YELLOW DIAGONAL | PAINT (8") | LF |
| PQ | WHITE CROSSWALK LINE | PAINT (8") | LF |
| PR | WHITE LANE LINE | PAINT (8") | LF |
| PS | WHITE GORELINE | PAINT (12") | LF |
| P2 | WHITE STOP BAR | PAINT (24") | LF |
| P9 | 2 FT. YELLOW MINISKIP | PAINT (4") | LF |
| P13 | 3 FT. WHITE MINISKIP | PAINT (8") | LF |
| QA | LEFT TURN ARROW MARKING SYMBOLS | PAINT | EA |
| QB | RIGHT TURN ARROW MARKING SYMBOLS | PAINT | EA |
| QC | STRAIGHT ARROW MARKING SYMBOLS | PAINT | EA |
| QD | COMBO. STRT / LT ARROW MARKING SYMBOLS | PAINT | EA |
| QE | COMBO. STRT / RT ARROW MARKING SYMBOLS | PAINT | EA |
| QF | COMBO. LT / RT ARROW MARKING SYMBOLS | PAINT | EA |
| QG | LEFT/RIGHT/STRAIGHT/ MARKING SYMBOLS | PAINT | EA |
| QI | ALPHANUMERIC CHARACTERS | PAINT CHARACTER | EA |
| MH | YELLOW & YELLOW, TEMPORARY RAISED PAVEMENT MARKER | | EA |
| MI | CRYSTAL & RED, TEMPORARY RAISED PAVEMENT MARKER | | EA |

I:\SEP-2016 IT\56
 C:\Temp\Production\Trans\NCDOT\Division03\Greenfield Lake\TrafficControl\TCR\Greenfield_Lake_TMP_1A_TS.dgn
 BERD5650 AT LUS290293

ATKINS 1616 EAST MILLBROOK ROAD, SUITE 310
 RALEIGH, NORTH CAROLINA 27609
 (919) 876-6888 NCBEES #F-0326

APPROVED: DATE: 10/11/2016



ROADWAY STANDARD DRAWINGS & LEGEND