

GEOTECHNICAL ENGINEER

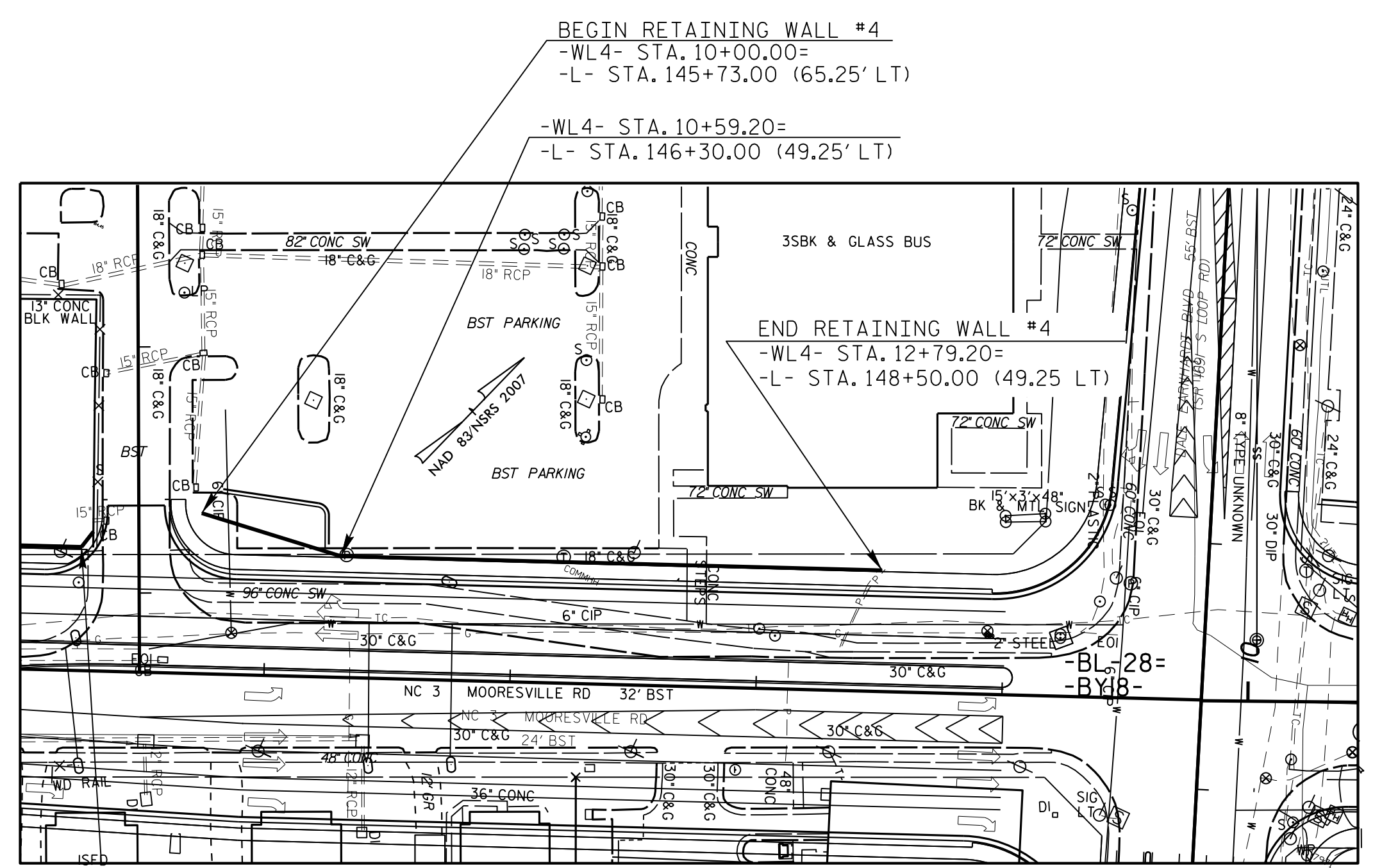
DocuSigned by:
Michael H. Stephens
C44768209314CC
SIGNATURE

ENGINEER

8/1/2016
DATE

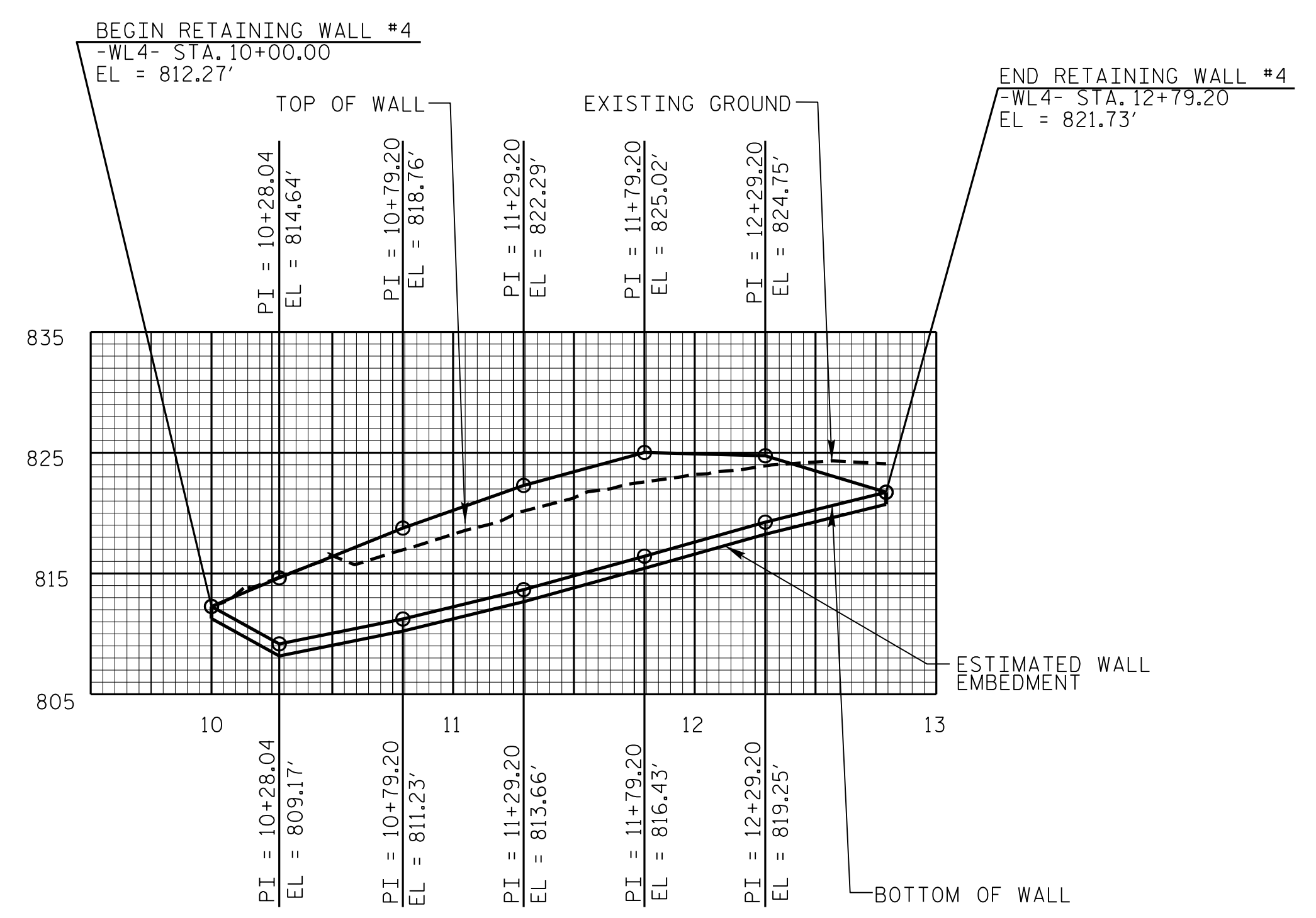
SIGNATURE DATE

**DOCUMENT NOT CONSIDERED FINAL
UNLESS ALL SIGNATURES COMPLETED**



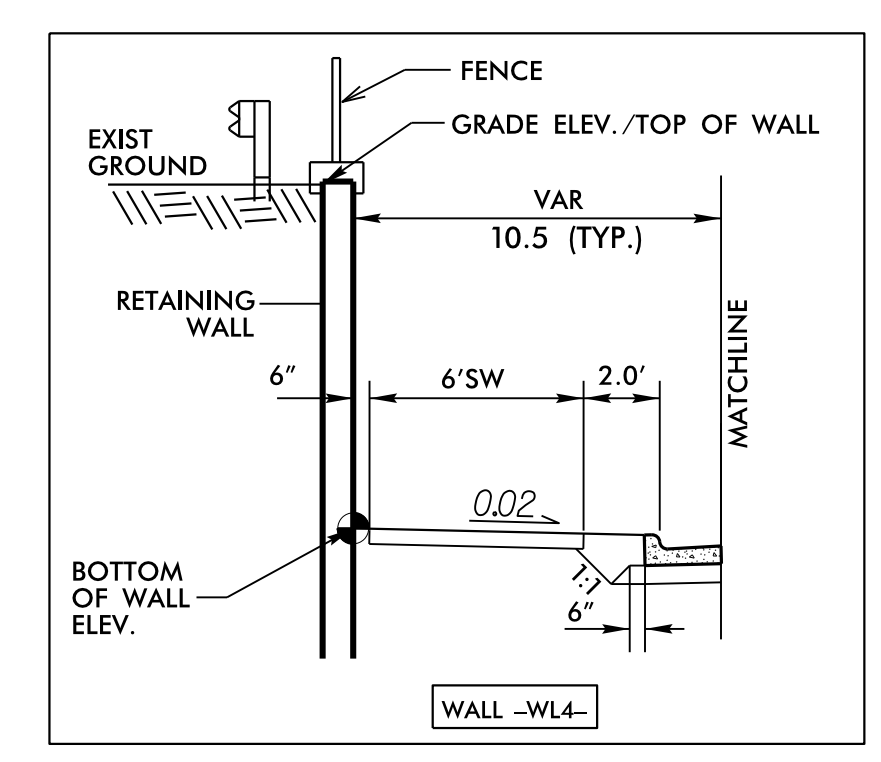
PLAN VIEW - RETAINING WALL NO. 4

SOLDIER PILE RETAINING WALL QUANTITIES		
RETAINING WALL NO. 4	-WL4-	* 2,015 SQUARE FEET
* WALL AREA IS MEASURED USING THE DESIGN HEIGHT 'H'		



WALL ENVELOPE - RETAINING WALL NO. 4

NOTE: 1) OFFSET DIMENSIONS ARE FROM FACE OF WALL
2) THE WALL ENVELOPE DOES NOT ACCURATELY DEPICT THE ACTUAL FACE OF THE WALL



PROJECT NO.: 39010.1.R2 (U-3440)

CABARRUS COUNTY

STATION: 145+73 -L- TO 148+50 -L-

SHEET 8 OF 9

NORTH CAROLINA
DEPARTMENT OF TRANSPORTATION
DIVISION OF HIGHWAYS

**GEOTECHNICAL
ENGINEERING UNIT**

REVISIONS						SHEET NO. WB
NO.	BY	DATE	NO.	BY	DATE	
1			3			
2			4			

PREPARED BY: MHS	DATE: 7/25/2016
REVIEWED BY: SCC	DATE: 7/25/2016