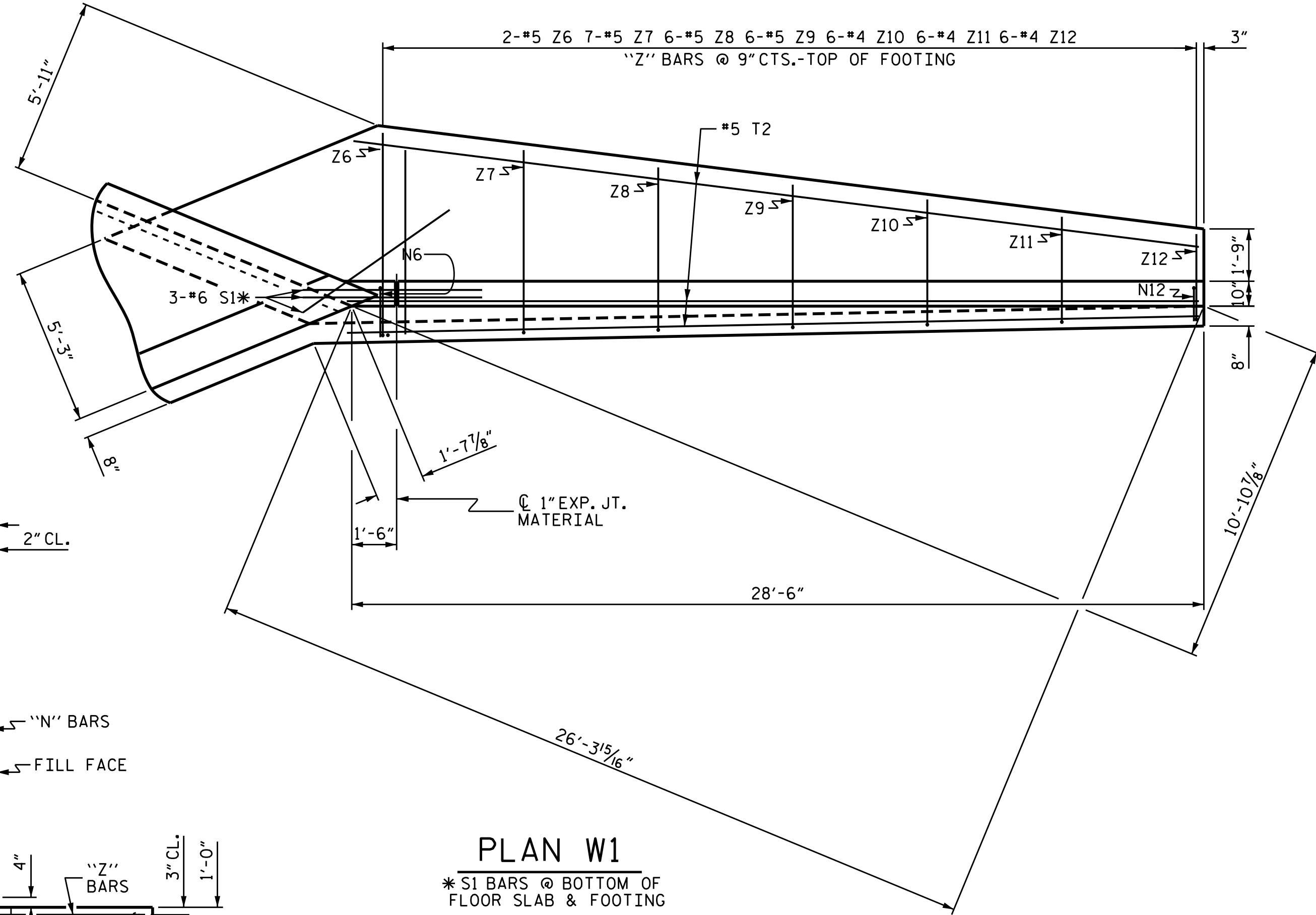
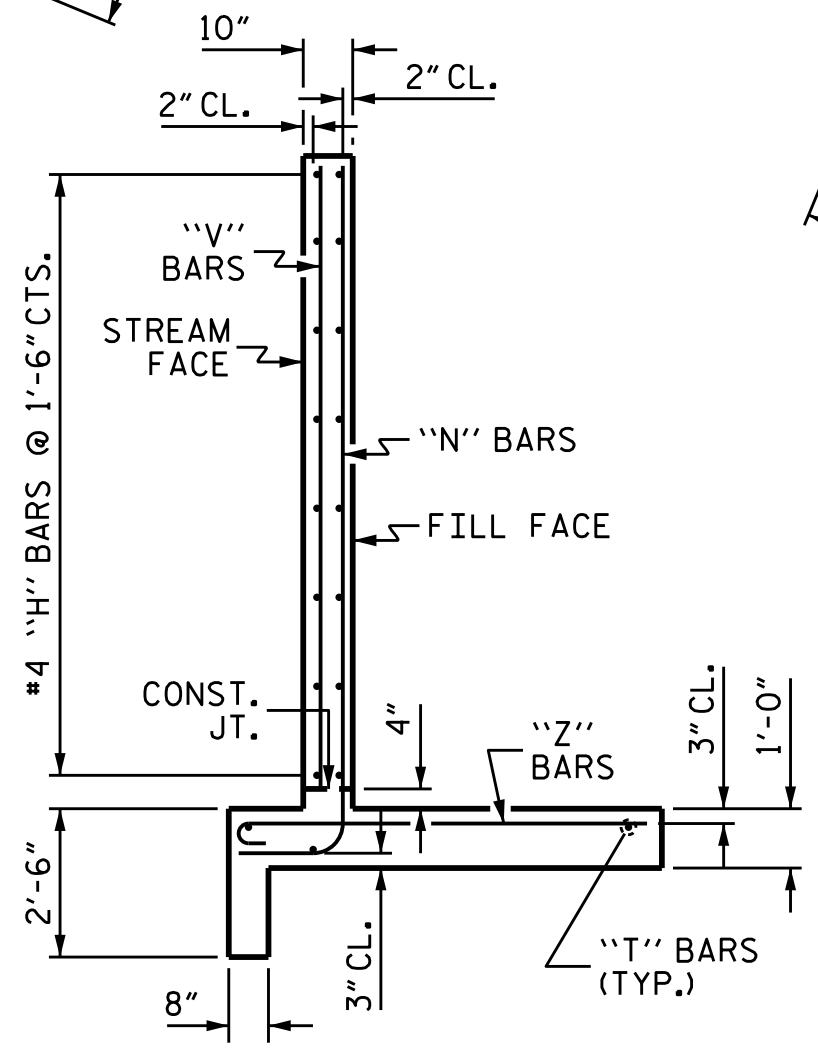


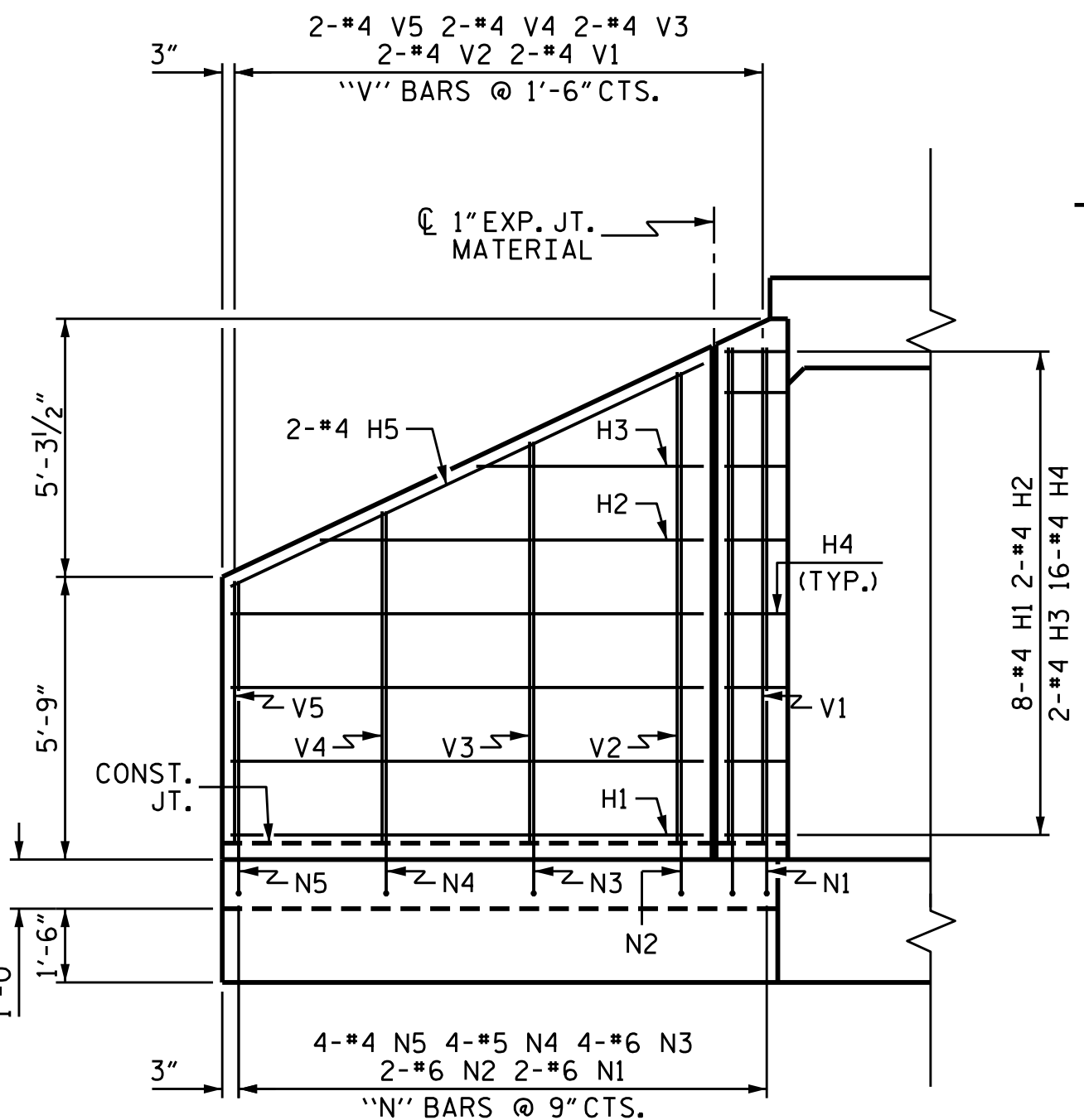
PLAN W2
* SI BARS @ BOTTOM OF FLOOR SLAB & FOOTING



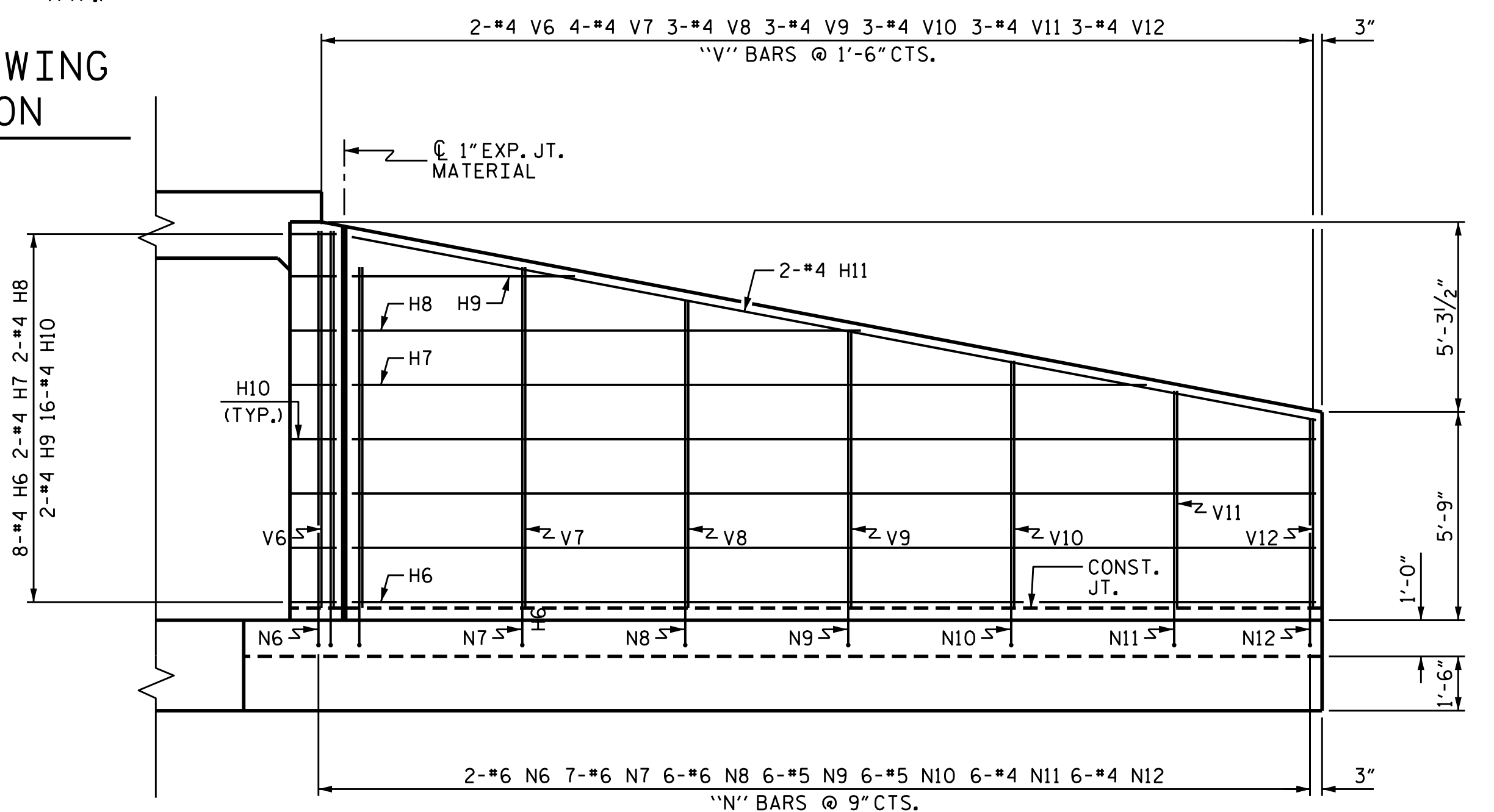
PLAN W1
* SI BARS @ BOTTOM OF FLOOR SLAB & FOOTING



TYPICAL WING SECTION



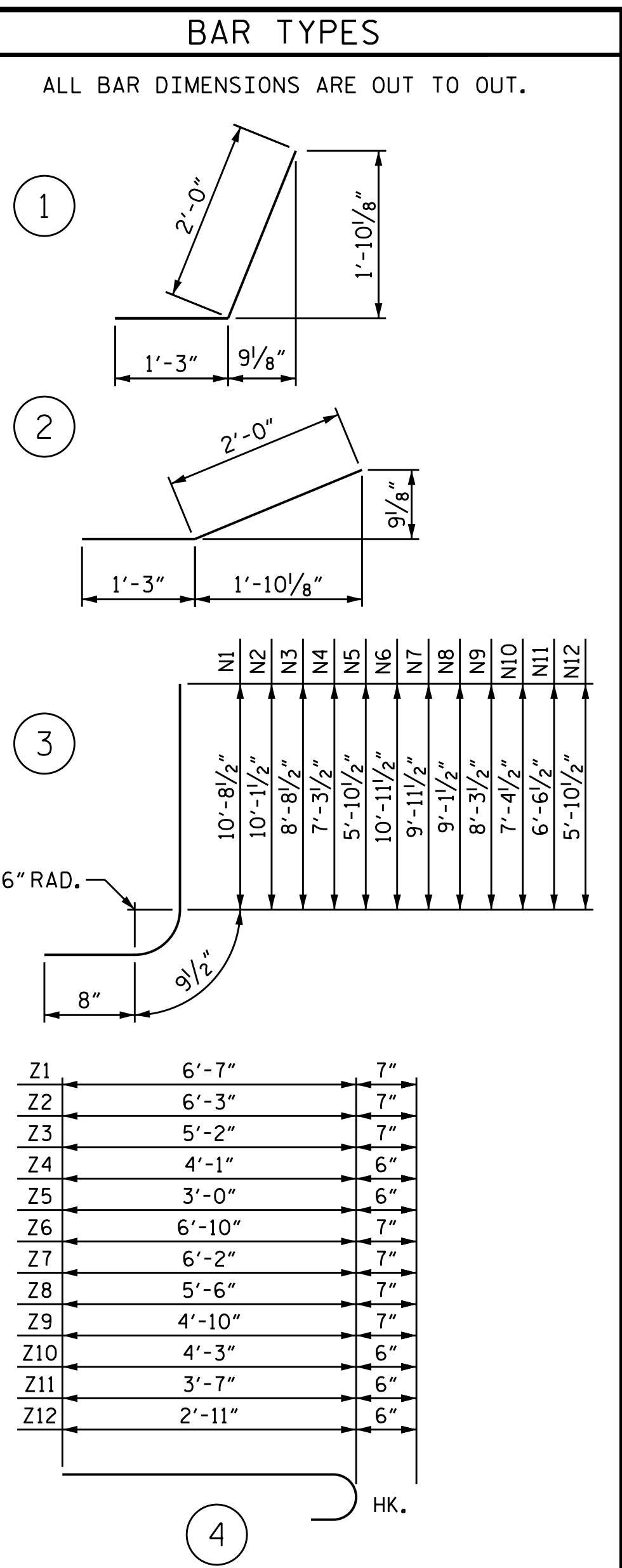
ELEVATION W2



ELEVATION W1

BILL OF MATERIAL STAGE II					
BAR	NO.	SIZE	TYPE	LENGTH	WEIGHT
H1	8	#4	STR	9'-7"	51
H2	2	#4	STR	7'-9"	10
H3	2	#4	STR	4'-7"	6
H4	16	#4	1	3'-3"	35
H5	2	#4	STR	10'-7"	14
N1	2	#6	3	12'-2"	37
N2	2	#6	3	11'-7"	35
N3	4	#6	3	10'-2"	61
N4	4	#5	3	8'-9"	37
N5	4	#4	3	7'-4"	20
S1	3	#6	STR	6'-0"	27
T1	3	#5	STR	11'-6"	36
V1	2	#4	STR	10'-1"	13
V2	2	#4	STR	9'-7"	13
V3	2	#4	STR	8'-2"	11
V4	2	#4	STR	6'-9"	9
V5	2	#4	STR	5'-4"	7
Z1	2	#5	4	7'-2"	15
Z2	2	#5	4	6'-10"	14
Z3	4	#5	4	5'-9"	24
Z4	4	#4	4	4'-7"	12
Z5	4	#4	4	3'-6"	9
REINFORCING STEEL					496 LBS.
CLASS A CONCRETE					
WING W2					6.2 C.Y.
PARTIAL CURTAIN WALL					0.7 C.Y.
TOTAL					6.9 C.Y.

BILL OF MATERIAL STAGE III					
BAR	NO.	SIZE	TYPE	LENGTH	WEIGHT
H6	8	#4	STR	26'-7"	142
H7	2	#4	STR	21'-11"	29
H8	2	#4	STR	14'-0"	19
H9	2	#4	STR	6'-2"	8
H10	16	#4	2	3'-3"	35
H11	2	#4	STR	27'-11"	37
N6	2	#6	3	12'-5"	37
N7	7	#6	3	11'-5"	120
N8	6	#6	3	10'-7"	95
N9	6	#5	3	9'-9"	61
N10	6	#5	3	8'-10"	55
N11	6	#4	3	8'-0"	32
N12	6	#4	3	7'-4"	29
S1	3	#6	STR	6'-0"	27
T2	3	#5	STR	28'-6"	89
V6	2	#4	STR	10'-5"	14
V7	4	#4	STR	9'-5"	25
V8	3	#4	STR	8'-6"	17
V9	3	#4	STR	7'-8"	15
V10	3	#4	STR	6'-10"	14
V11	3	#4	STR	6'-0"	12
V12	3	#4	STR	5'-3"	11
Z6	2	#5	4	7'-5"	15
Z7	7	#5	4	6'-9"	49
Z8	6	#5	4	6'-1"	38
Z9	6	#5	4	5'-5"	34
Z10	6	#4	4	4'-9"	19
Z11	6	#4	4	4'-1"	16
Z12	6	#4	4	3'-5"	14
REINFORCING STEEL					1108 LBS.
CLASS A CONCRETE					
WING W1					15.2 C.Y.
1 HEADWALL					1.2 C.Y.
PARTIAL CURTAIN WALL					0.5 C.Y.
TOTAL					16.9 C.Y.



ASSEMBLED BY : KEITH D. LAYNE DATE : 5/06/16
 CHECKED BY : J. D. HAWK DATE : 5/20/16
 DRAWN BY : CCJ 01/00
 CHECKED BY : RWW 03/00

17-AUG-2016 09:36
 R:\Structures\Plans\Str04\U3440.SD.CU.04.dgn
 jdhawk

DocuSigned by:
Raman Patel
 8/19/2016
 NORTH CAROLINA PROFESSIONAL ENGINEER
 SEAL 29048
 RAMAN P. PATEL

PROJECT NO. U-3440
CABARRUS COUNTY
 STATION: 117+50.00 -L-

SHEET 8 OF 8
 STATE OF NORTH CAROLINA
 DEPARTMENT OF TRANSPORTATION
 RALEIGH
STANDARD WINGS FOR CONCRETE BOX CULVERT
 H = 10'-0" SLOPE = 2:1
 45° SKEW

REVISIONS				SHEET NO.	
NO.	BY:	DATE:	NO.	BY:	DATE:
1			3		
2			4		

TOTAL SHEETS 8

STR. #4 STD. NO. CW4510