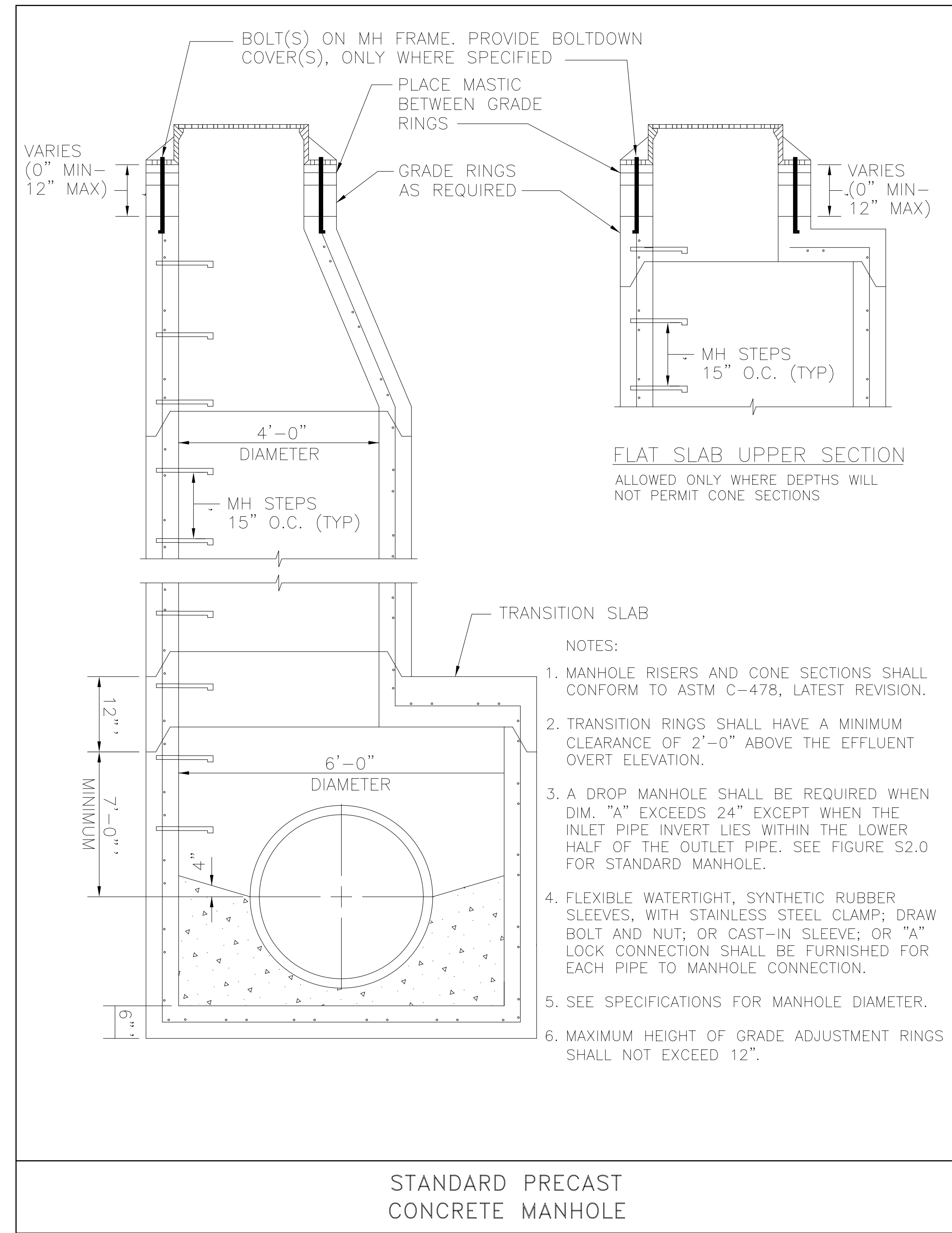


UTILITY CONSTRUCTION

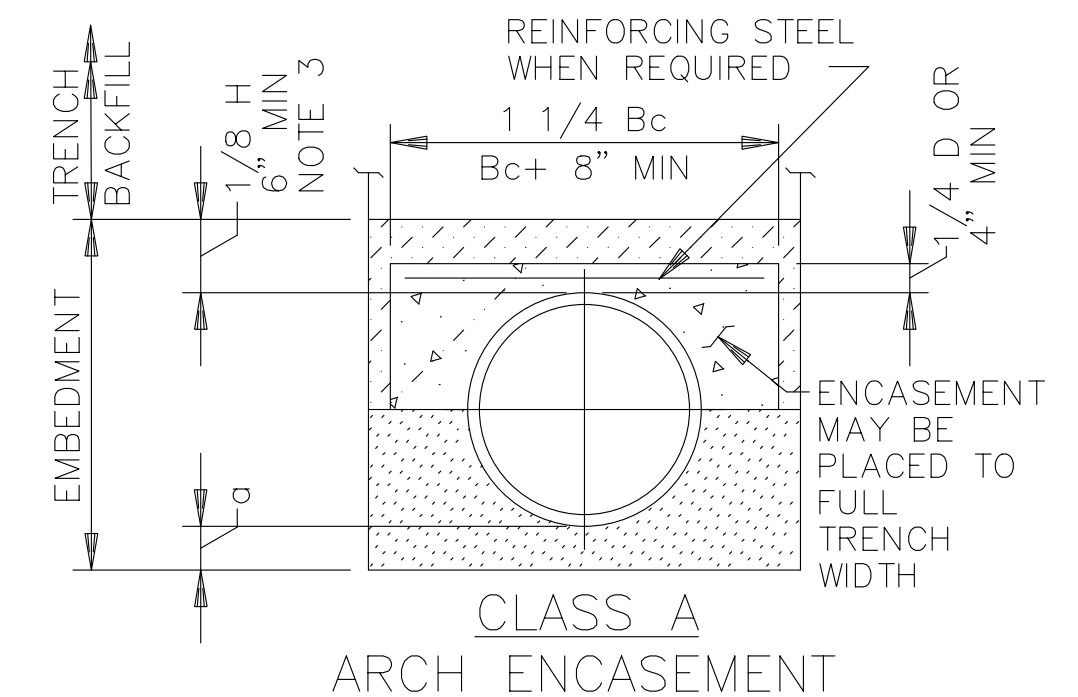


STANDARD PRECAST
CONCRETE MANHOLE

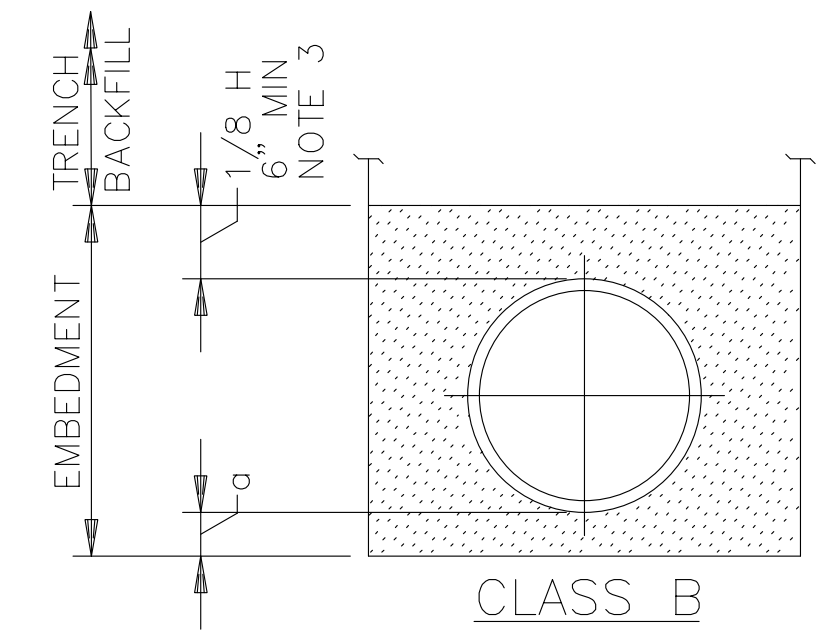
- NOTES:
1. MANHOLE RISERS AND CONE SECTIONS SHALL CONFORM TO ASTM C-478, LATEST REVISION.
 2. TRANSITION RINGS SHALL HAVE A MINIMUM CLEARANCE OF 2'-0" ABOVE THE EFFLUENT OVERT ELEVATION.
 3. A DROP MANHOLE SHALL BE REQUIRED WHEN DIM. "A" EXCEEDS 24" EXCEPT WHEN THE INLET PIPE INVERT LIES WITHIN THE LOWER HALF OF THE OUTLET PIPE. SEE FIGURE S2.0 FOR STANDARD MANHOLE.
 4. FLEXIBLE WATERTIGHT, SYNTHETIC RUBBER SLEEVES, WITH STAINLESS STEEL CLAMP; DRAW BOLT AND NUT; OR CAST-IN SLEEVE; OR "A" LOCK CONNECTION SHALL BE FURNISHED FOR EACH PIPE TO MANHOLE CONNECTION.
 5. SEE SPECIFICATIONS FOR MANHOLE DIAMETER.
 6. MAXIMUM HEIGHT OF GRADE ADJUSTMENT RINGS SHALL NOT EXCEED 12".

TABLE OF EMBEDMENT
DEPTHS BELOW PIPE

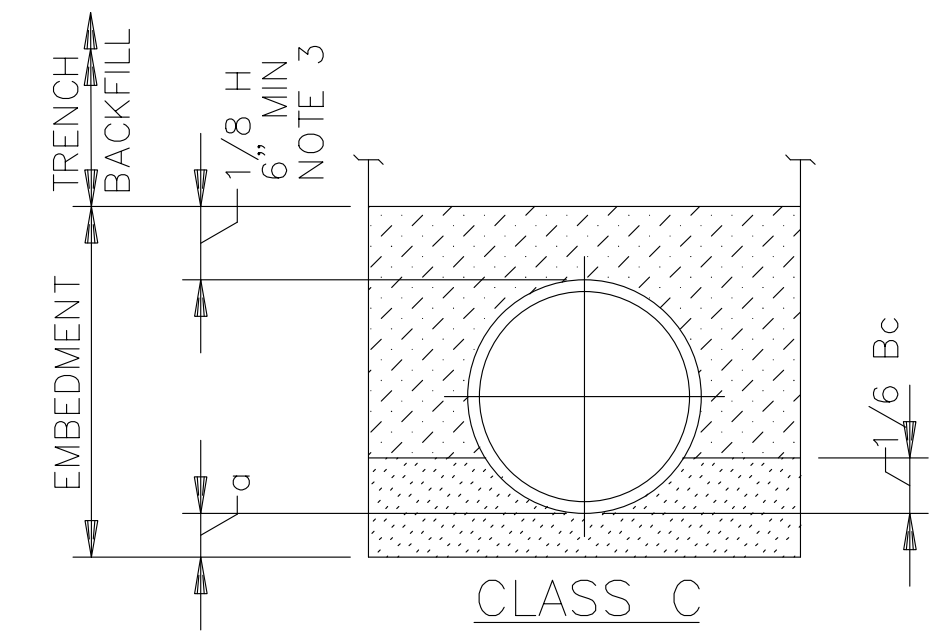
D	a MIN SOIL	a MIN ROCK
27" & SMALLER	6"	6"
30" TO 60"	6"	9"
66" & LARGER	6"	12"



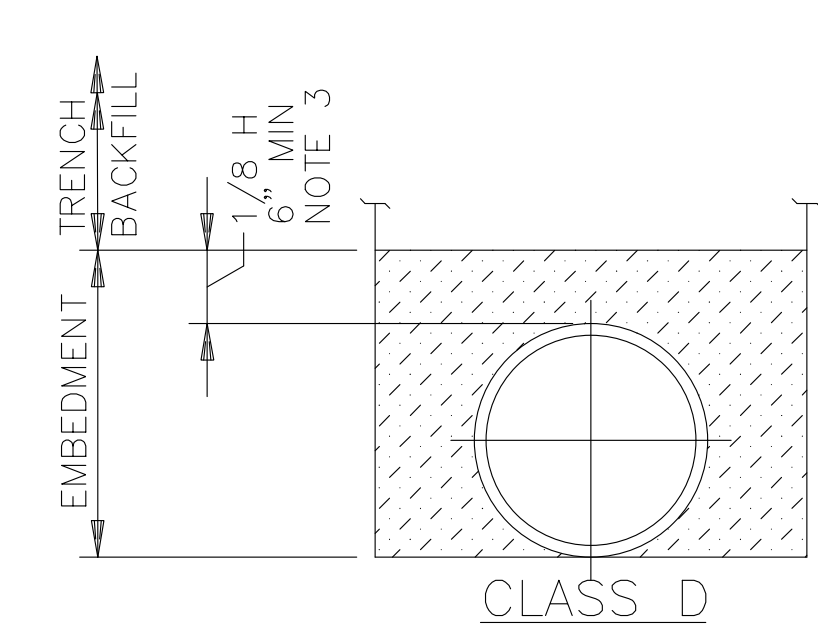
CLASS A
ARCH ENCASEMENT



CLASS B



CLASS C



CLASS D

- NOTES:
1. GRANULAR EMBEDMENT MATERIAL SHALL BE CRUSHED ROCK, PEA GRAVEL COARSE AGGREGATE SIZE NUMBER 57. EMBEDMENT MATERIAL SHALL BE PLACED IN LAYERS NOT MORE THAN 6" DEEP AND COMPACTED AS SPECIFIED.
 2. HAND PLACED EMBEDMENT SHALL BE COMPACTED FINELY DIVIDED MATERIAL FREE FROM DEBRIS AND STONES.
 3. EMBEDMENT ABOVE THE TOP OF THE PIPE SHALL BE AN UNCOMPACTED LAYER FOR ALL INSTALLATIONS.
 4. REFER TO SPECIFICATIONS FOR GEOTECHNICAL FABRIC OR SPECIAL EMBEDMENT REQUIREMENTS FOR TRENCHES IN FINE SOILS EXTENDING BELOW GROUNDWATER LEVEL.
 5. TRENCH OUTLINES DO NOT INDICATE ACTUAL TRENCH EXCAVATION SHAPE, SOIL CONDITIONS, OR PRESENCE OF SHEETING LEFT IN PLACE. EMBEDMENT MATERIAL SHALL EXTEND THE FULL WIDTH OF THE ACTUAL TRENCH EXCAVATION.

LEGEND

- Bc OUTSIDE DIAMETER OF PIPE
H COVER ABOVE TOP OF PIPE
D NOMINAL PIPE SIZE
a EMBEDMENT BELOW PIPE (SEE TABLE)
- HAND PLACED EMBEDMENT
 - GRANULAR EMBEDMENT
 - CONCRETE

EMBEDMENTS FOR MAINS

REVISIONS

Revisions: