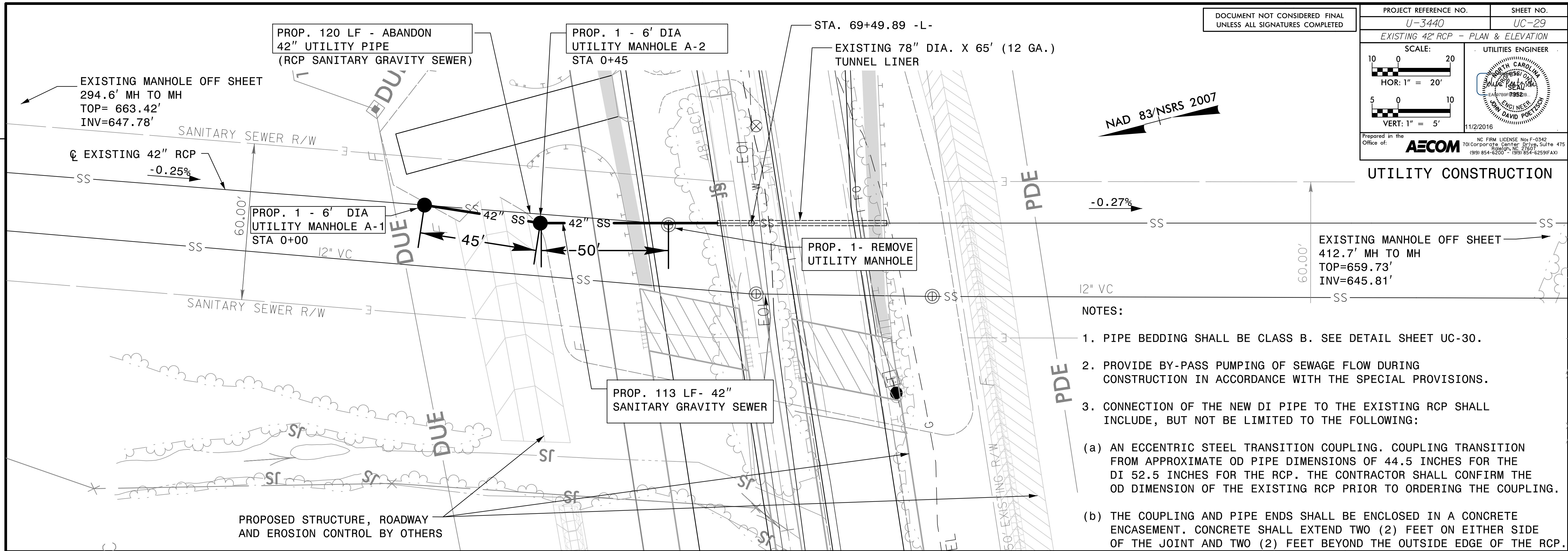
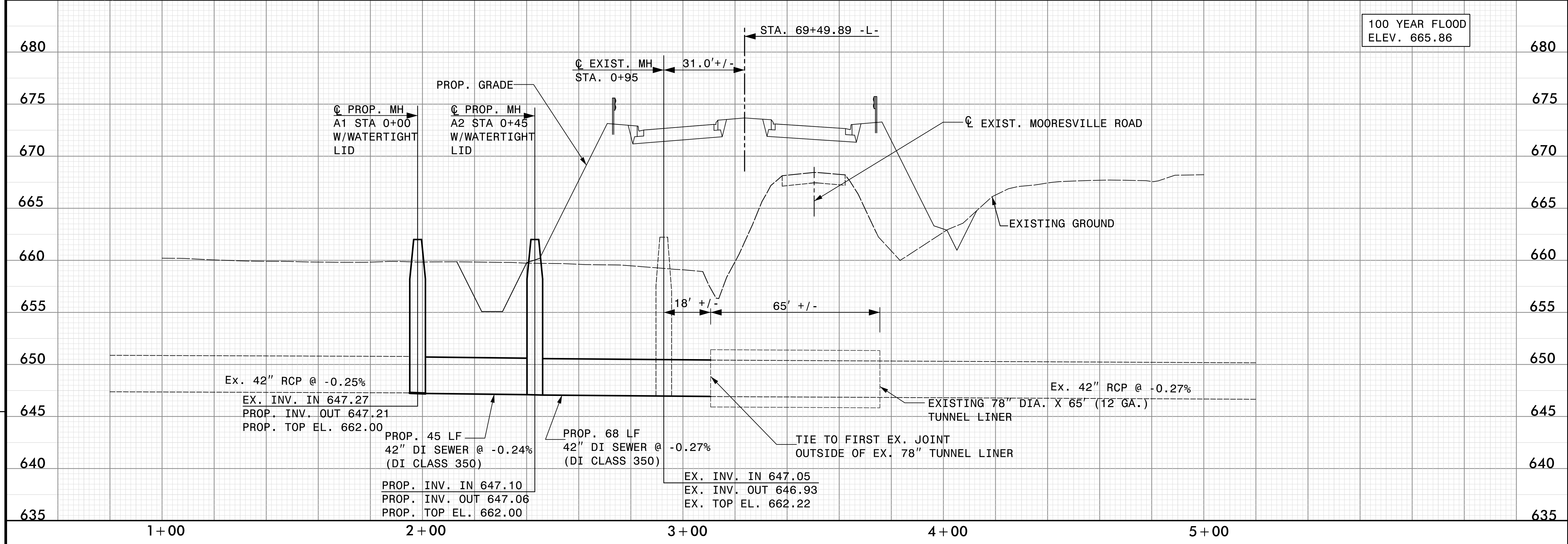


DOCUMENT NOT CONSIDERED FINAL
UNLESS ALL SIGNATURES COMPLETED

| | |
|---|--------------------|
| PROJECT REFERENCE NO. U-3440 | SHEET NO. UC-29 |
| EXISTING 42" RCP - PLAN & ELEVATION | |
| SCALE: HOR: 1" = 20' VERT: 1" = 5' | |
| UTILITIES ENGINEER | |
| Prepared in the Office of: AECOM 701 Corporate Center Drive, Suite 4175 Raleigh, NC 27607 (919) 854-6200 • (919) 854-6259(FAX) | |



- NOTES:
- PIPE BEDDING SHALL BE CLASS B. SEE DETAIL SHEET UC-30.
 - PROVIDE BY-PASS PUMPING OF SEWAGE FLOW DURING CONSTRUCTION IN ACCORDANCE WITH THE SPECIAL PROVISIONS.
 - CONNECTION OF THE NEW DI PIPE TO THE EXISTING RCP SHALL INCLUDE, BUT NOT BE LIMITED TO THE FOLLOWING:
 - AN ECCENTRIC STEEL TRANSITION COUPLING. COUPLING TRANSITION FROM APPROXIMATE OD PIPE DIMENSIONS OF 44.5 INCHES FOR THE DI 52.5 INCHES FOR THE RCP. THE CONTRACTOR SHALL CONFIRM THE OD DIMENSION OF THE EXISTING RCP PRIOR TO ORDERING THE COUPLING.
 - THE COUPLING AND PIPE ENDS SHALL BE ENCLOSED IN A CONCRETE ENCASMENT. CONCRETE SHALL EXTEND TWO (2) FEET ON EITHER SIDE OF THE JOINT AND TWO (2) FEET BEYOND THE OUTSIDE EDGE OF THE RCP.



REVISIONS

Revisions:

Drawn: 280_000_U3+40_UC29.dgn
User: rmp
Date: 11/2/2016
Time: 11:50 AM