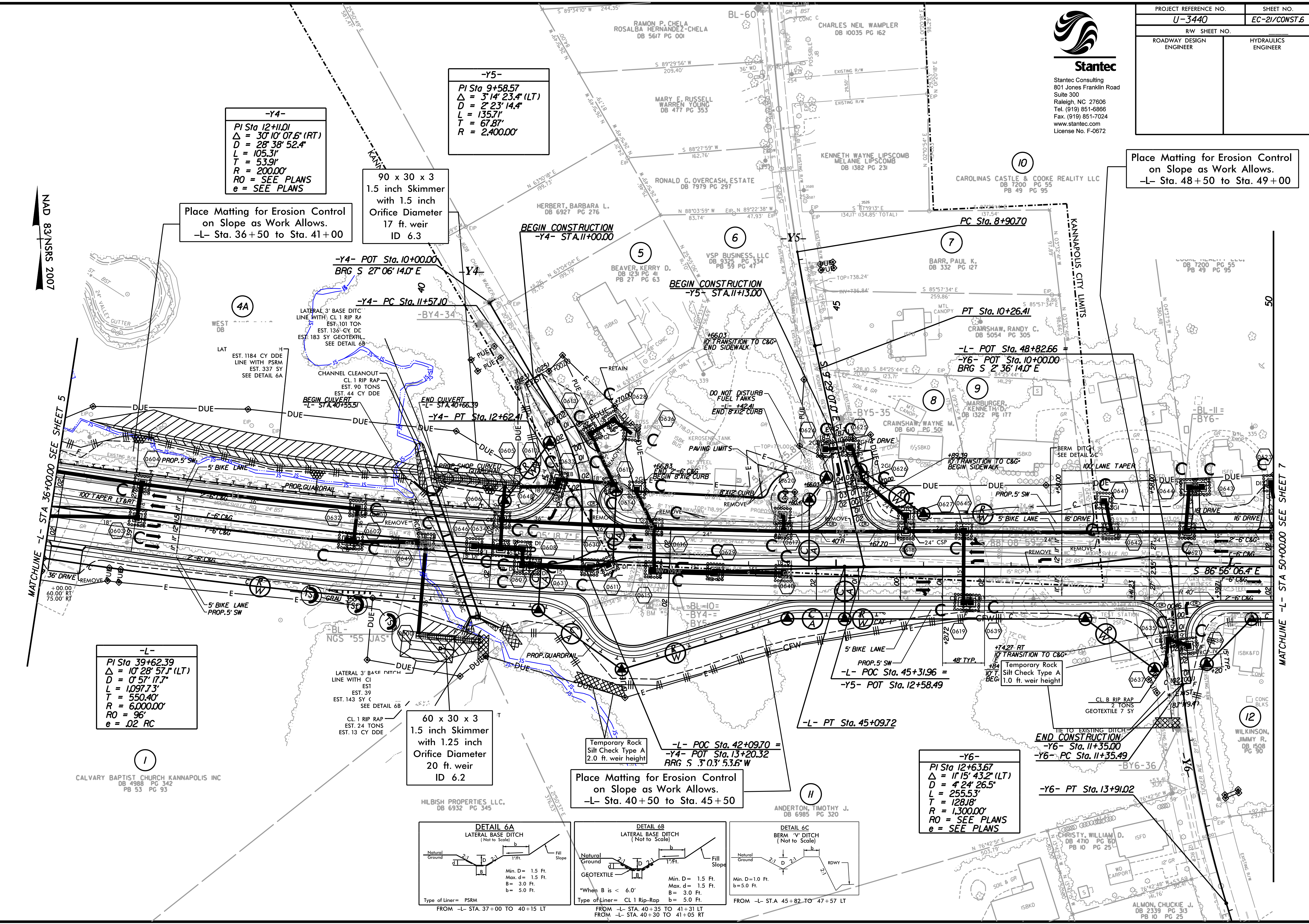


Stantec
 Stantec Consulting
 801 Jones Franklin Road
 Suite 300
 Raleigh, NC 27606
 Tel. (919) 851-6866
 Fax. (919) 851-7024
 www.stantec.com
 License No. F-0672

| | |
|-------------------------|---------------------|
| PROJECT REFERENCE NO. | SHEET NO. |
| U-3440 | EC-21/CONST.6 |
| R/W SHEET NO. | |
| ROADWAY DESIGN ENGINEER | HYDRAULICS ENGINEER |

Place Matting for Erosion Control on Slope as Work Allows.
 -L- Sta. 48+50 to Sta. 49+00

NAD 83/NSRS 2007



-Y4-
 PI Sta. 12+11.01
 $\Delta = 30' 10" 07.6" (RT)$
 $D = 28' 38" 52.4"$
 $L = 105.31'$
 $T = 53.91'$
 $R = 200.00'$
 RO = SEE PLANS
 e = SEE PLANS

-Y5-
 PI Sta. 9+58.57
 $\Delta = 3' 14" 23.4" (LT)$
 $D = 2' 23" 14.4"$
 $L = 135.71'$
 $T = 67.87'$
 $R = 2,400.00'$

Place Matting for Erosion Control on Slope as Work Allows.
 -L- Sta. 36+50 to Sta. 41+00

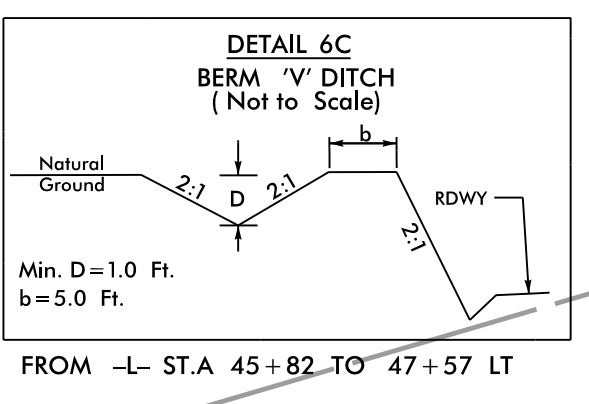
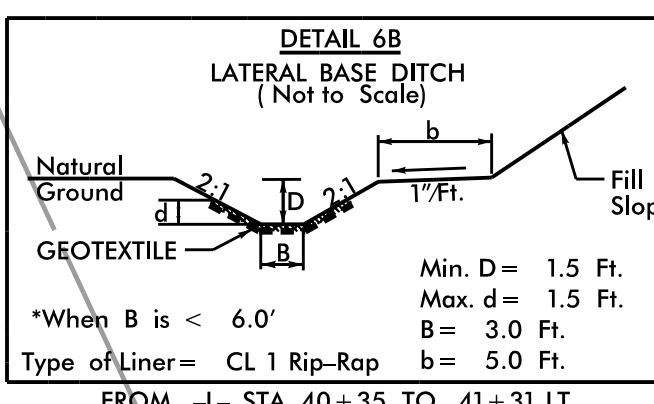
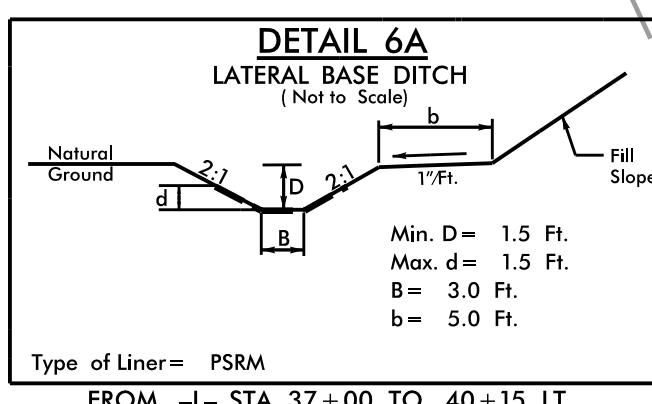
90 x 30 x 3
 1.5 inch Skimmer
 with 1.5 inch
 Orifice Diameter
 17 ft. weir
 ID 6.3

-L-
 PI Sta. 39+62.39
 $\Delta = 10' 28" 57.1" (LT)$
 $D = 0' 57" 17.7"$
 $L = 1,097.73'$
 $T = 550.40'$
 $R = 6,000.00'$
 RO = 96
 e = 02 RC

60 x 30 x 3
 1.5 inch Skimmer
 with 1.25 inch
 Orifice Diameter
 20 ft. weir
 ID 6.2

Place Matting for Erosion Control on Slope as Work Allows.
 -L- Sta. 40+50 to Sta. 45+50

-Y6-
 PI Sta. 12+63.67
 $\Delta = 11' 15" 43.2" (LT)$
 $D = 4' 24" 26.5"$
 $L = 255.53'$
 $T = 128.18'$
 $R = 1,300.00'$
 RO = SEE PLANS
 e = SEE PLANS



MATCHLINE -L- STA. 00+00+96 SEE SHEET 5

MATCHLINE -L- STA. 50+00+00 SEE SHEET 7