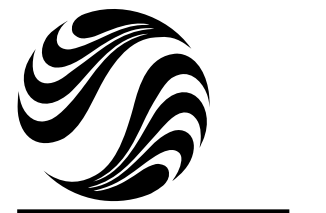
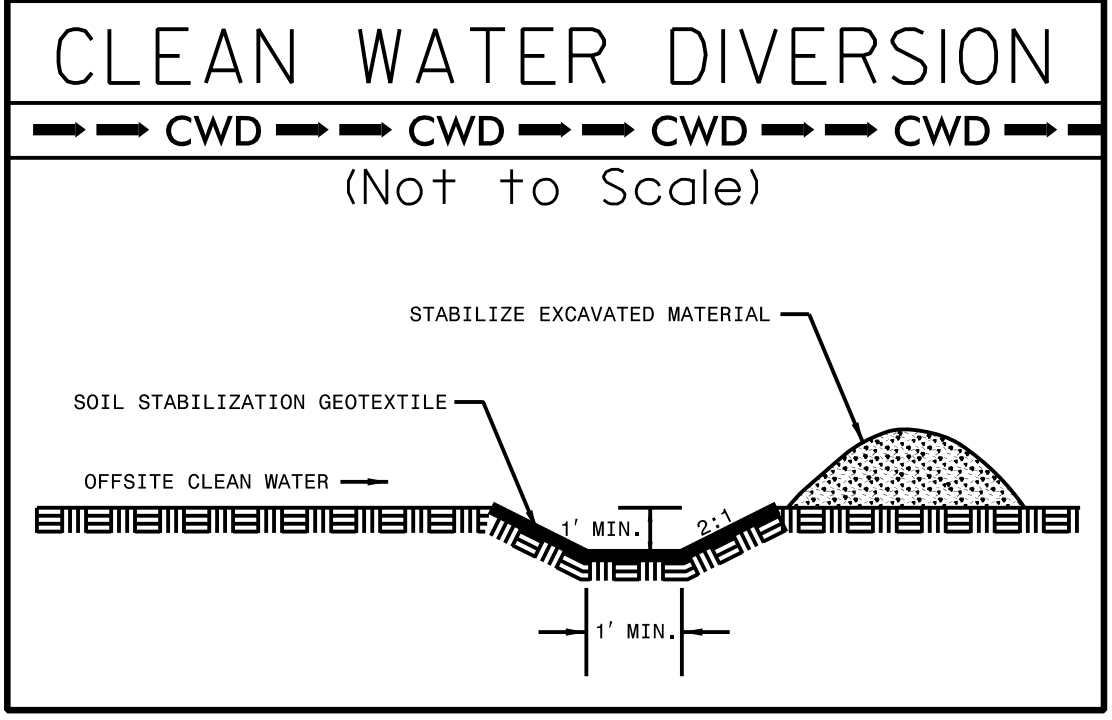


PROJECT REFERENCE NO. U-3440	SHEET NO. EC-9/CONST.B
RW SHEET NO.	
ROADWAY DESIGN ENGINEER	HYDRAULICS ENGINEER



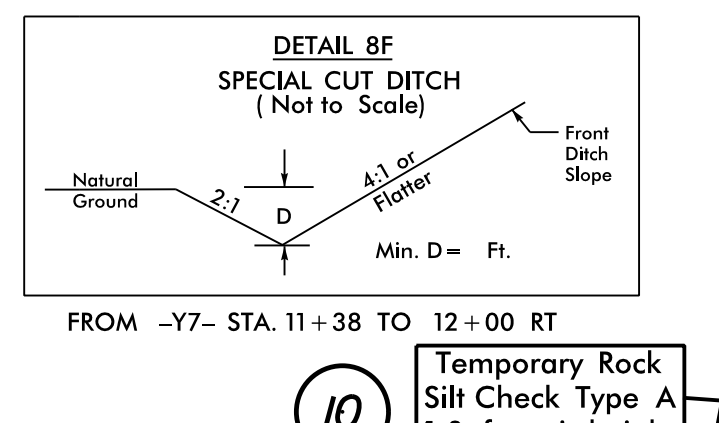
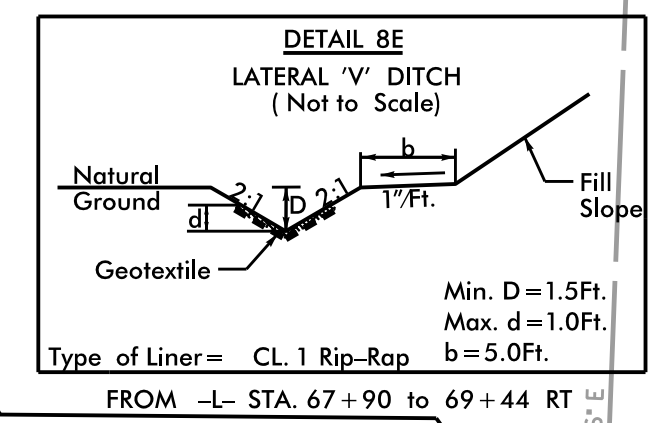
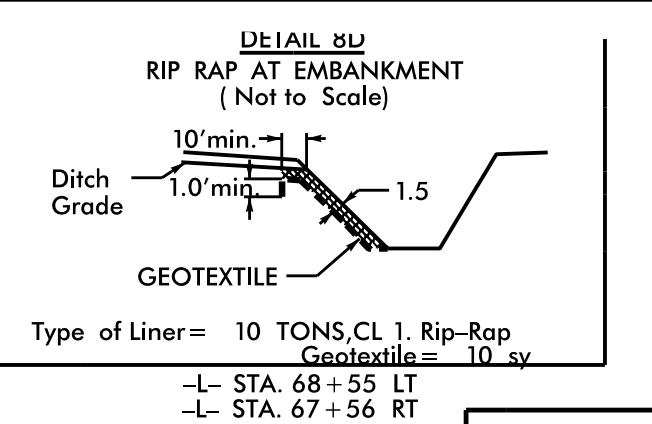
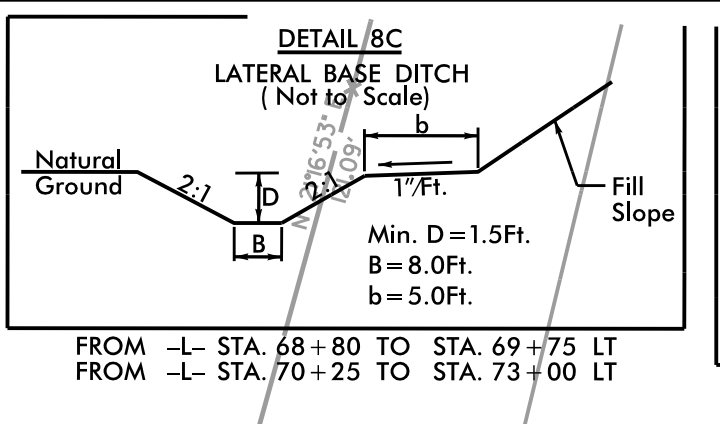
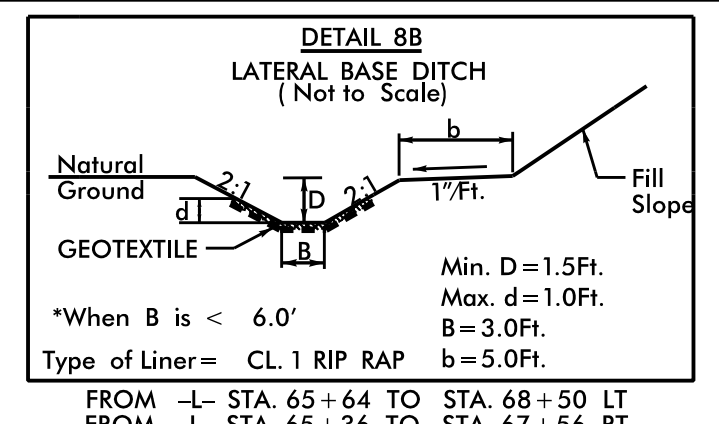
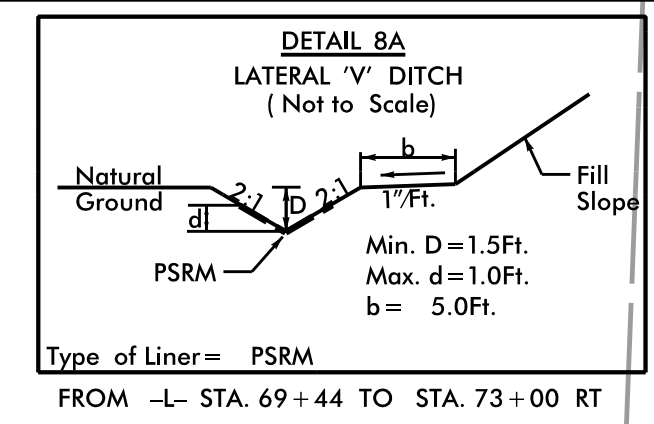
Stantec
 Stantec Consulting
 801 Jones Franklin Road
 Suite 300
 Raleigh, NC 27606
 Tel. (919) 851-6866
 Fax. (919) 851-7024
 www.stantec.com
 License No. F-0672



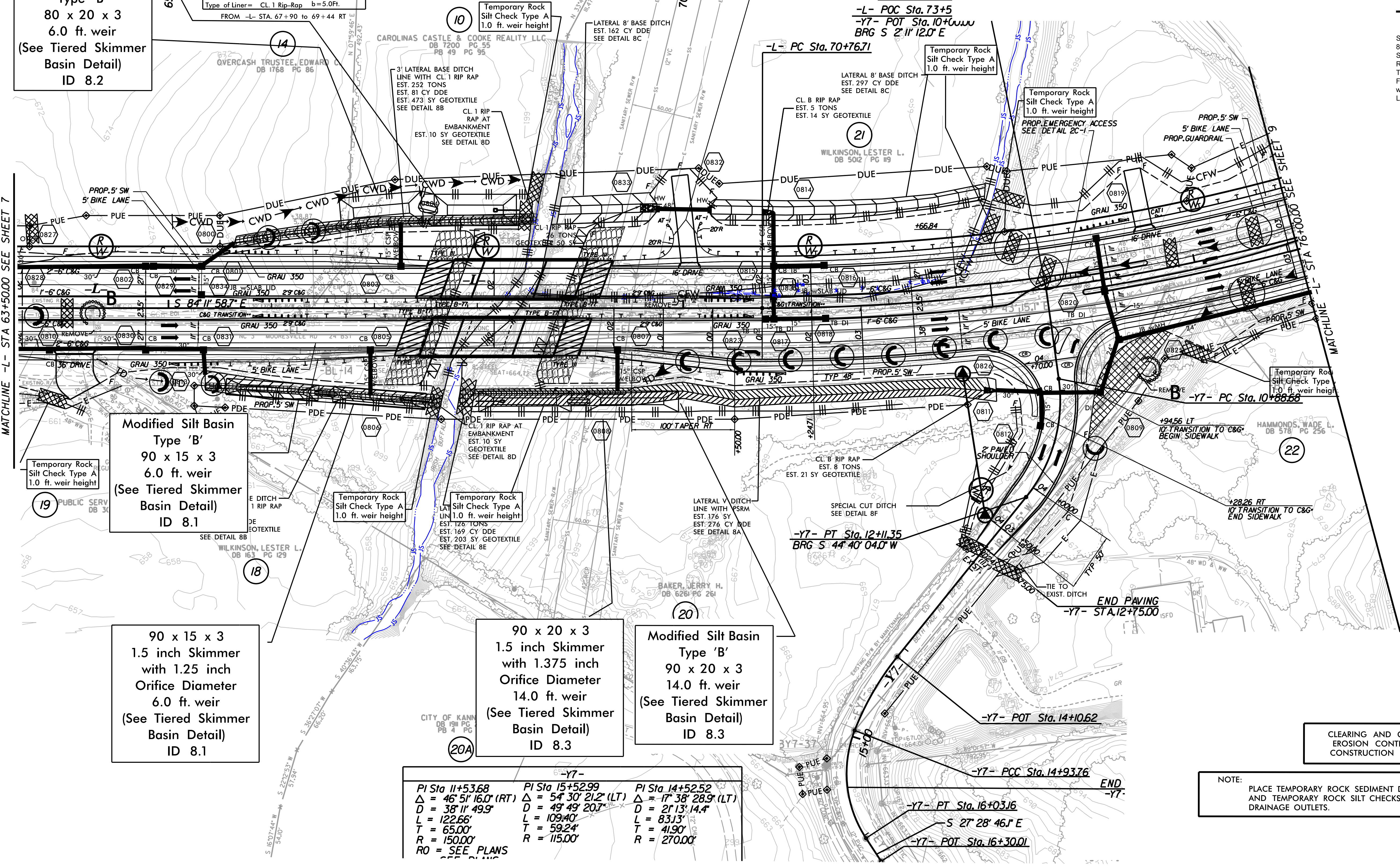
-L-
 $PI\ Sta\ 80+28.$
 $\Delta = 50' 54'' 3$
 $D = 2' 51'' 53.$
 $L = 1777.13'$
 $T = 952.04'$
 $R = 2,000.00'$
 $RO = 144'$
 $e = .03$

80 x 20 x 3
 1.5 inch Skimmer
 with 1.125 inch
 Orifice Diameter
 6.0 ft. weir
 (See Tiered Skimmer
 Basin Detail)
 ID 8.2

Modified Silt Basin
 Type 'B'
 80 x 20 x 3
 6.0 ft. weir
 (See Tiered Skimmer
 Basin Detail)
 ID 8.2



MATCHLINE -L- STA 63+50.00 SEE SHEET 7



Modified Silt Basin
 Type 'B'
 90 x 15 x 3
 6.0 ft. weir
 (See Tiered Skimmer
 Basin Detail)
 ID 8.1

90 x 15 x 3
 1.5 inch Skimmer
 with 1.25 inch
 Orifice Diameter
 6.0 ft. weir
 (See Tiered Skimmer
 Basin Detail)
 ID 8.1

90 x 20 x 3
 1.5 inch Skimmer
 with 1.375 inch
 Orifice Diameter
 14.0 ft. weir
 (See Tiered Skimmer
 Basin Detail)
 ID 8.3

Modified Silt Basin
 Type 'B'
 90 x 20 x 3
 14.0 ft. weir
 (See Tiered Skimmer
 Basin Detail)
 ID 8.3

$PI\ Sta\ 11+53.68$	$PI\ Sta\ 15+52.99$	$PI\ Sta\ 14+52.52$
$\Delta = 46' 51'' 16.0'' (RT)$	$\Delta = 54' 30'' 21.2'' (LT)$	$\Delta = 17' 38'' 28.9'' (LT)$
$D = 38' 11'' 49.9''$	$D = 49' 49'' 20.7''$	$D = 21' 13'' 14.4''$
$L = 122.66'$	$L = 109.40'$	$L = 83.13'$
$T = 65.00'$	$T = 59.24'$	$T = 41.90'$
$R = 150.00'$	$R = 115.00'$	$R = 270.00'$
$RO = SEE\ PLANS$		

CLEARING AND GRUBBING
 EROSION CONTROL FOR
 CONSTRUCTION SHEET 8

NOTE:
 PLACE TEMPORARY ROCK SEDIMENT DAMS TYPE - B
 AND TEMPORARY ROCK SILT CHECKS TYPE - A AT
 DRAINAGE OUTLETS.