

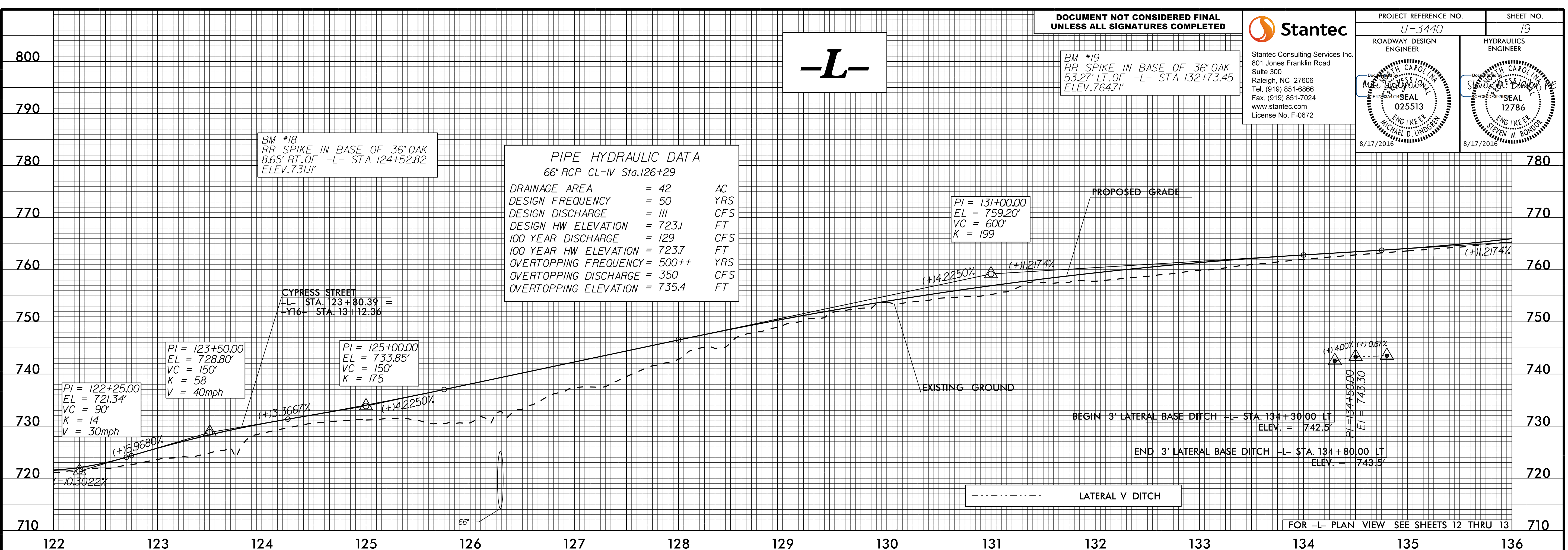
5/28/2016

DOCUMENT NOT CONSIDERED FINAL
UNLESS ALL SIGNATURES COMPLETED



Stantec Consulting Services Inc.
801 Jones Franklin Road
Suite 300
Raleigh, NC 27606
Tel. (919) 851-6866
Fax. (919) 851-7024
www.stantec.com
License No. F-0672

PROJECT REFERENCE NO. U-3440	SHEET NO. 19
ROADWAY DESIGN ENGINEER MICHAEL D. LINDSEY 025513 8/17/2016	HYDRAULICS ENGINEER STEVEN M. BONDY 12786 8/17/2016

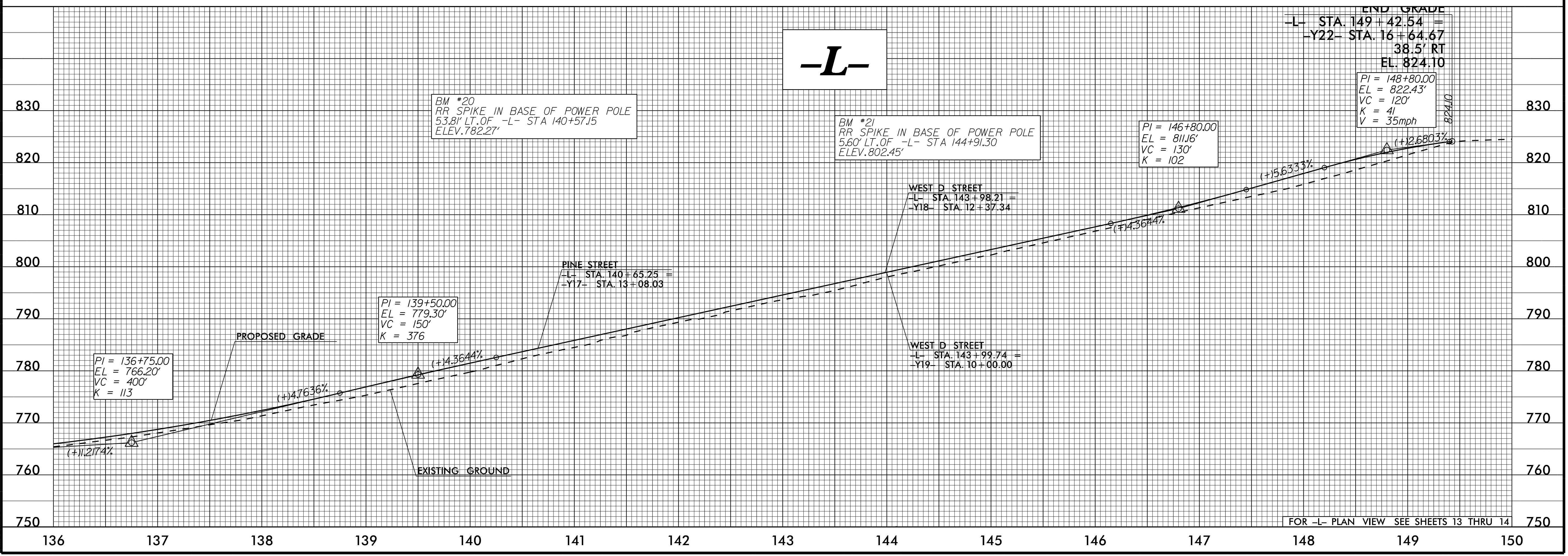


-L-

BM #19
RR SPIKE IN BASE OF 36" OAK
53.27' LT. OF -L- STA 132+73.45
ELEV. 764.71'

BM #18
RR SPIKE IN BASE OF 36" OAK
8.65' RT. OF -L- STA 124+52.82
ELEV. 731.11'

PIPE HYDRAULIC DATA
66" RCP CL-IV Sta. 126+29



-L-

BM #20
RR SPIKE IN BASE OF POWER POLE
53.81' LT. OF -L- STA 140+57.15
ELEV. 782.27'

BM #21
RR SPIKE IN BASE OF POWER POLE
5.60' LT. OF -L- STA 144+91.30
ELEV. 802.45'

8/16/2016
U:\Roadway\Pro\U-3440_r-dj-ef1.dgn