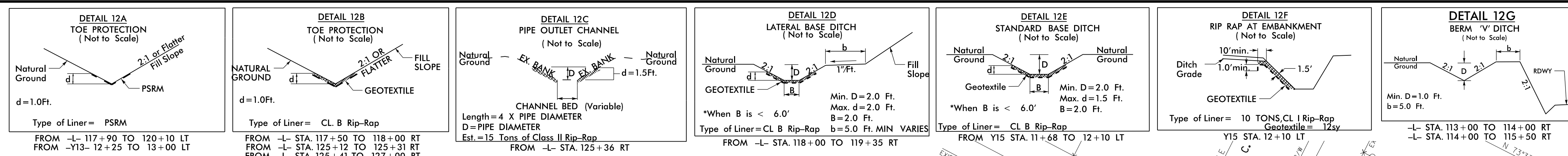


8/17/09



SEALED ONLY FOR REVISION AREAS & THE ADDITION OF -DR3-

Professional Engineer Seal: Michael D. Lindsey, License No. 025513, State of North Carolina, 10/11/2016

Professional Engineer Seal: Stephen M. Bondy, License No. 2786, State of North Carolina, 10/11/2016

PROJECT REFERENCE NO. U-3440	SHEET NO. 12
ROADWAY DESIGN ENGINEER	HYDRAULICS ENGINEER
DAVID MILLER REALTY & INVESTMENT, INC. DB 9806 PG 169C	DAVID MILLER REALTY & INVESTMENT, INC. DB 9806 PG 169C
10/11/2016	10/11/2016

DOCUMENT NOT CONSIDERED FINAL UNLESS ALL SIGNATURES COMPLETED

-DR3-

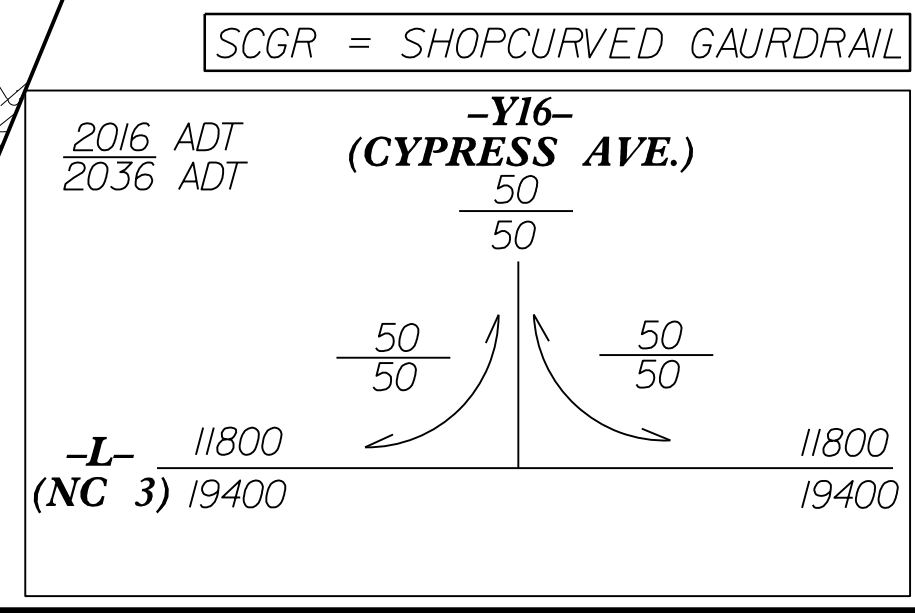
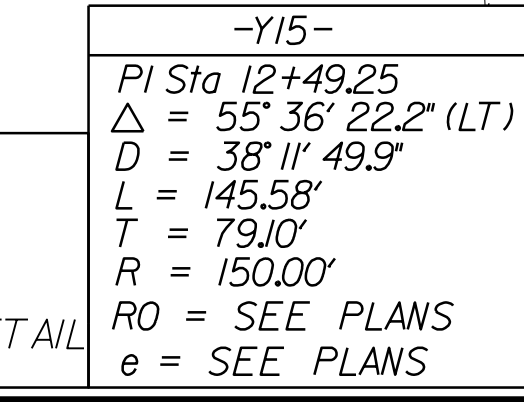
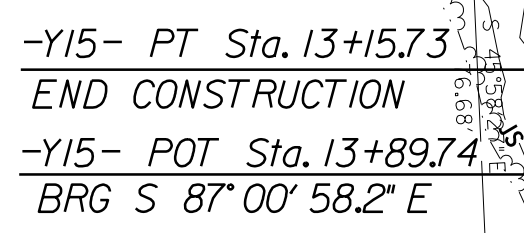
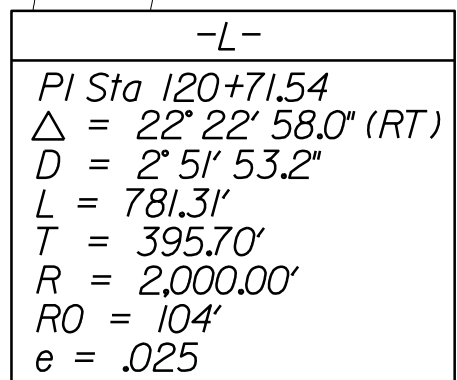
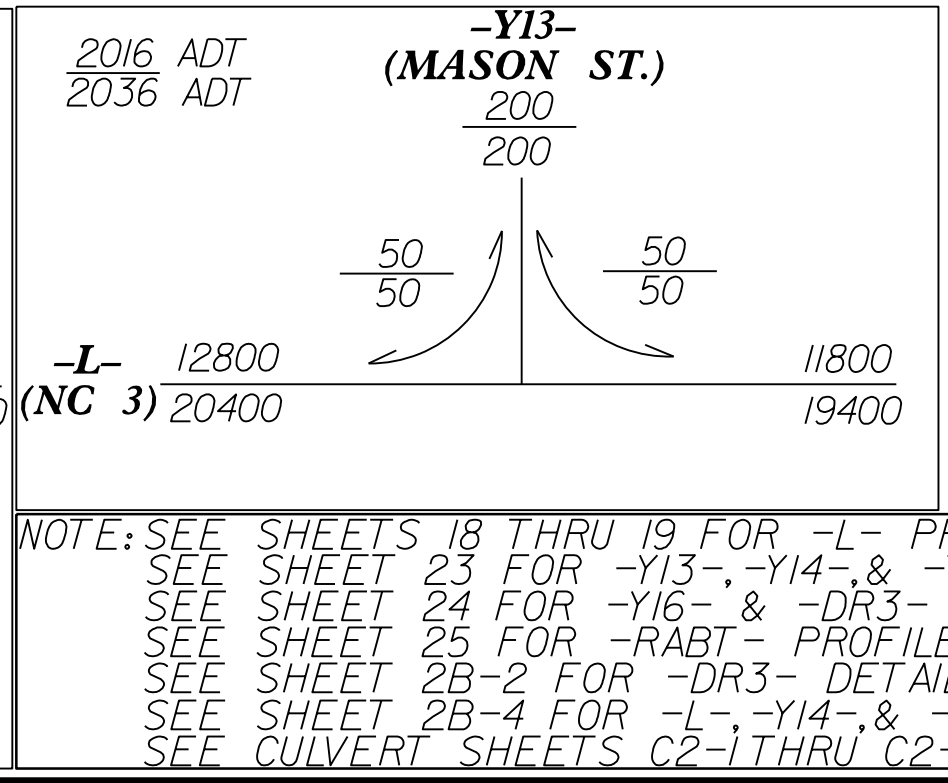
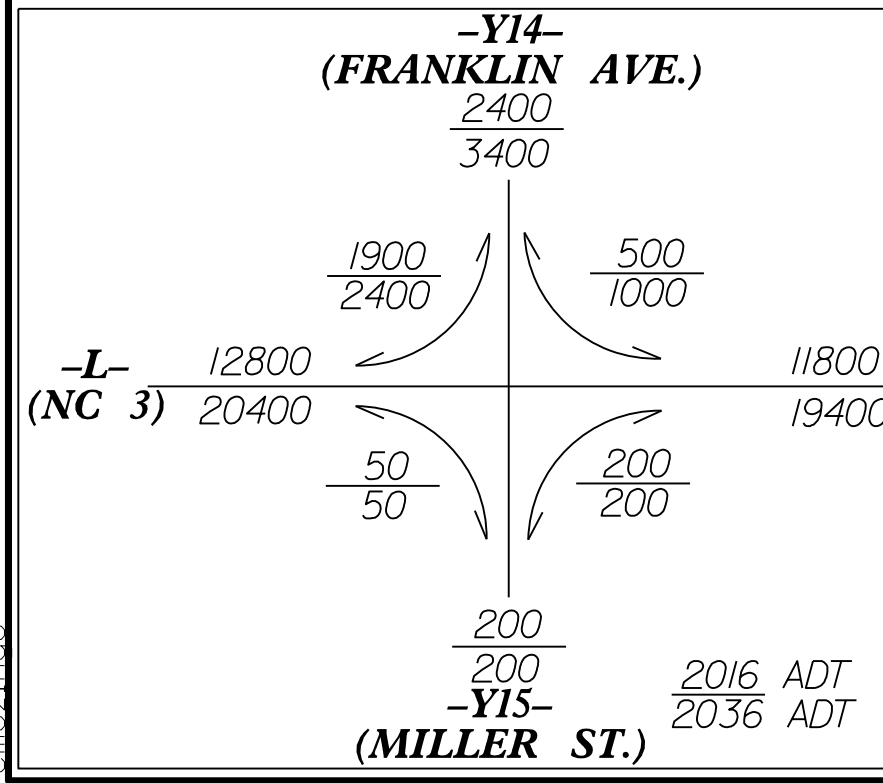
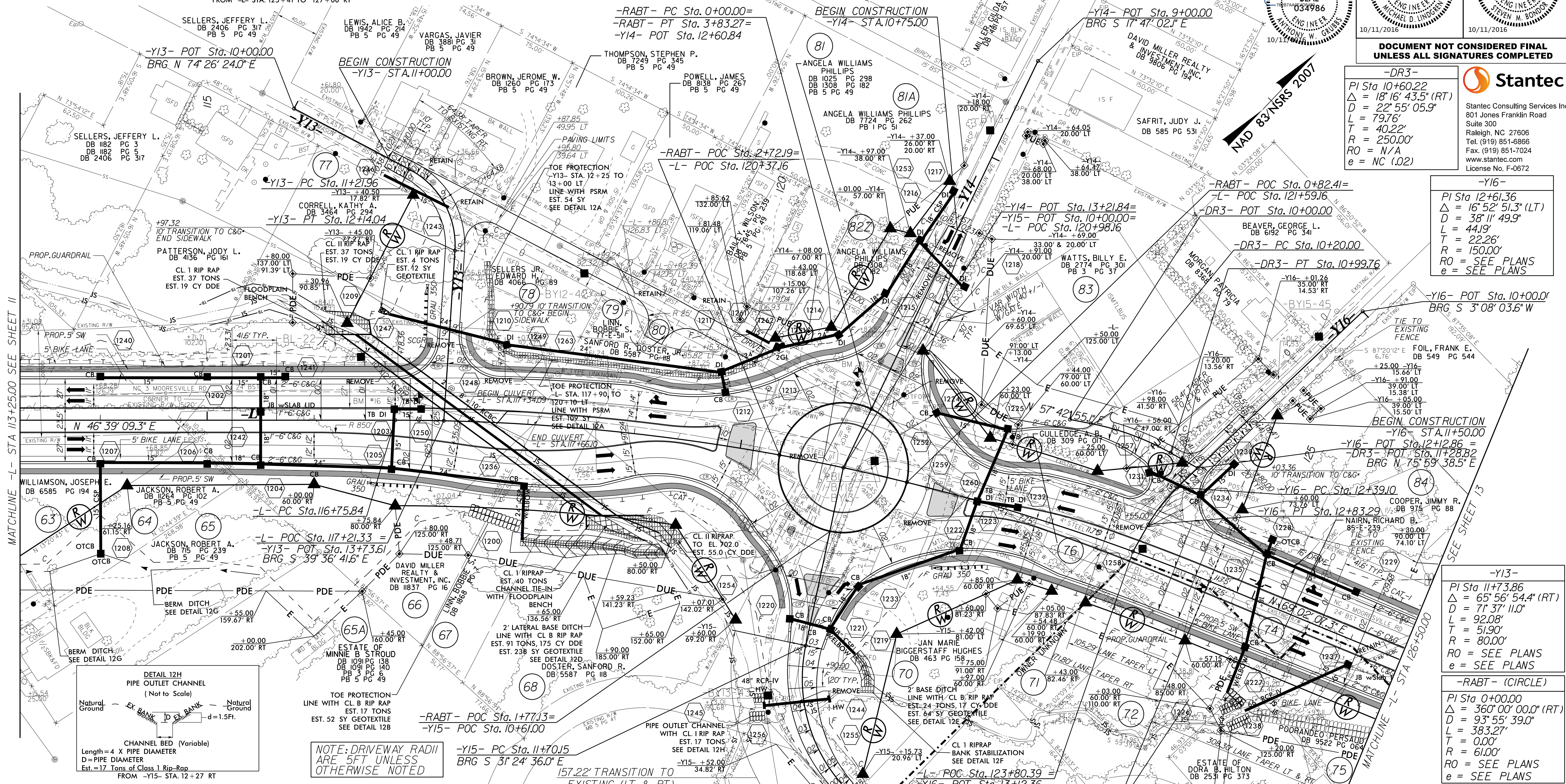
PI Sta 10+60.22
 $\Delta = 18' 16" 43.5" (RT)$
 $D = 22' 55" 05.9"$
 $L = 79.76'$
 $T = 40.22'$
 $R = 250.00'$
 $RO = N/A$
 $e = NC (0.2)$

-Y16-

PI Sta 12+61.36
 $\Delta = 16' 52" 51.3" (LT)$
 $D = 38' 11" 49.9"$
 $L = 44.19'$
 $T = 22.26'$
 $R = 150.00'$
 $RO = SEE PLANS$
 $e = SEE PLANS$

-Y16-

PI Sta 12+61.36
 $\Delta = 16' 52" 51.3" (LT)$
 $D = 38' 11" 49.9"$
 $L = 44.19'$
 $T = 22.26'$
 $R = 150.00'$
 $RO = SEE PLANS$
 $e = SEE PLANS$



*SEE DETAIL SHEET 2C-2 FOR CURB AND GUTTER 10' TRANSITION TO PAVED SHOULDER

SCGR = SHOPCURVED GAURDRAIL

D:\11\2016\Roadway\Pro\U-3440-r_dj_psh12.dgn