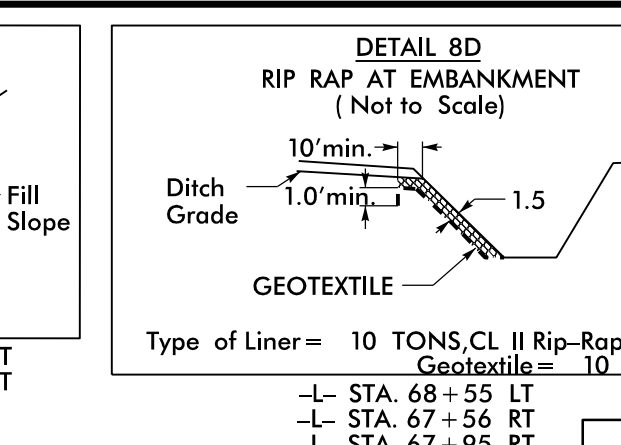
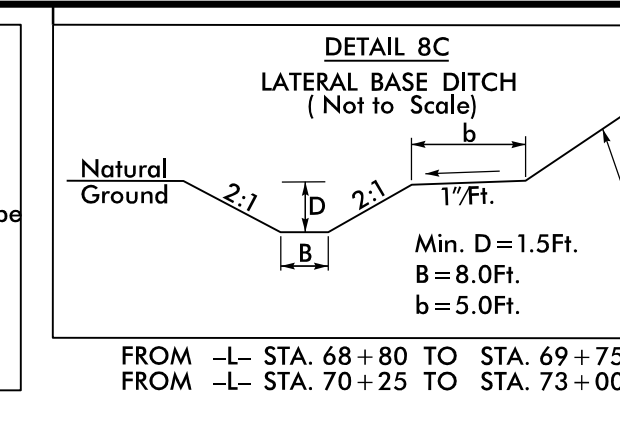
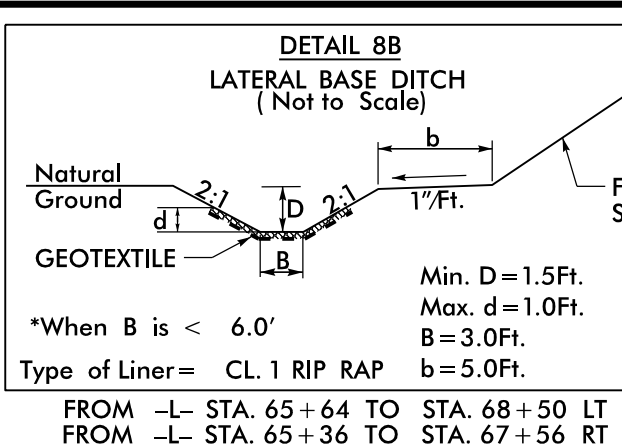
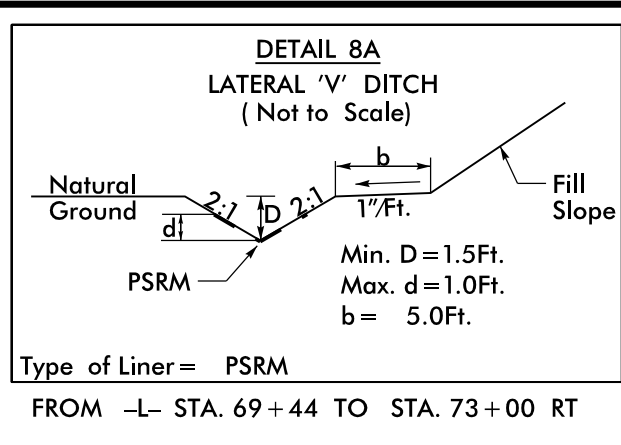
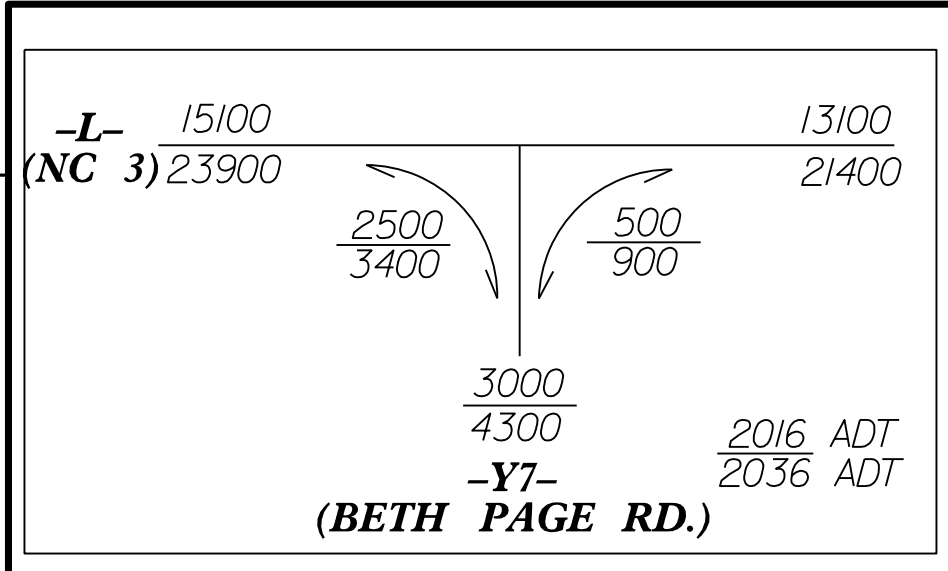


PROJECT REFERENCE NO. U-3440	SHEET NO. 8
RW SHEET NO.	HYDRAULICS ENGINEER
ROADWAY DESIGN ENGINEER	ENGINEER
10/11/2016	10/11/2016

DOCUMENT NOT CONSIDERED FINAL UNLESS ALL SIGNATURES COMPLETED

SEALED ONLY FOR REVISION AREAS

Stantec Consulting Services Inc.  
801 Jones Franklin Road  
Suite 300  
Raleigh, NC 27606  
Tel. (919) 851-6866  
Fax. (919) 851-7024  
www.stantec.com  
License No. F-0672

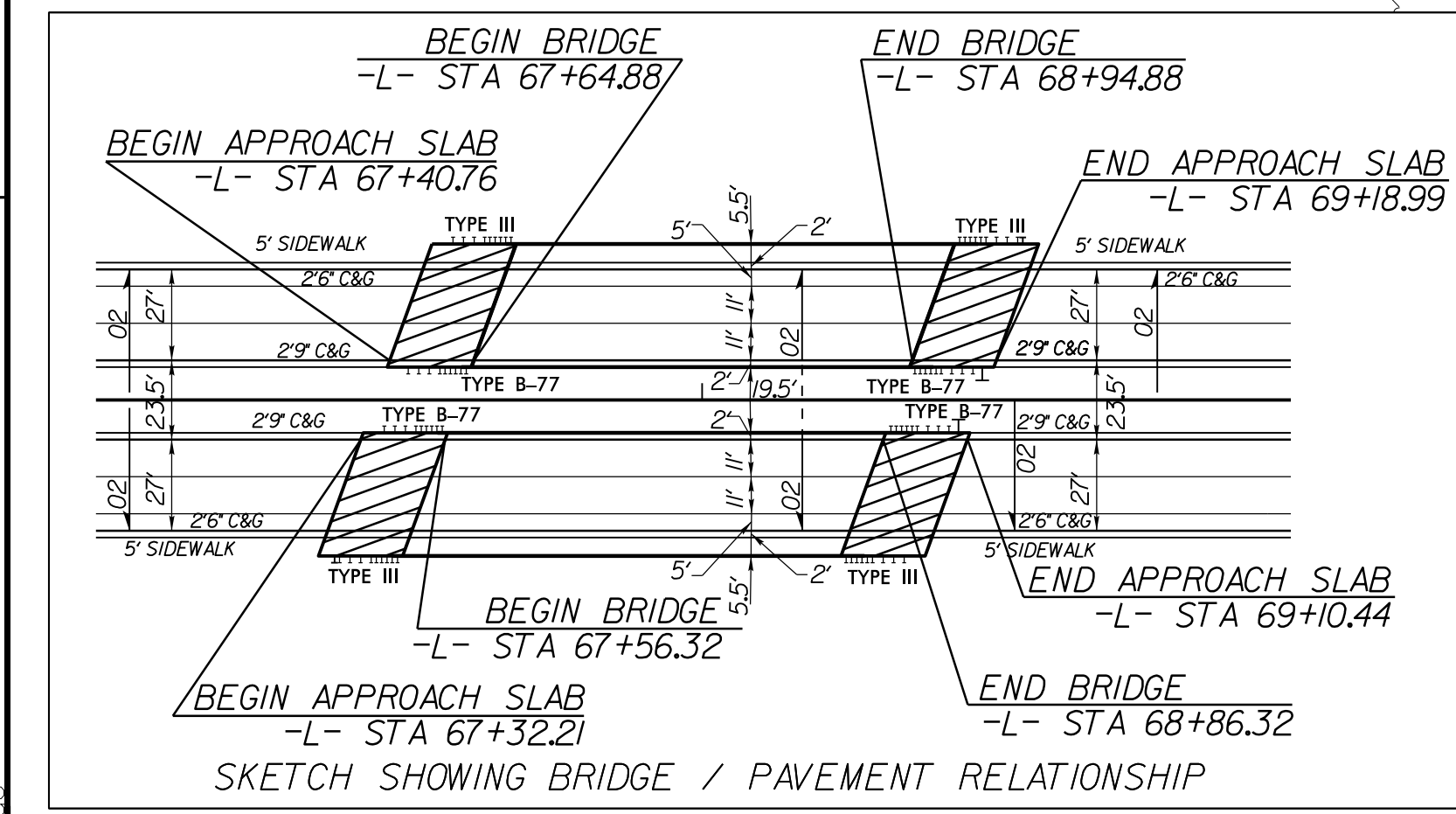
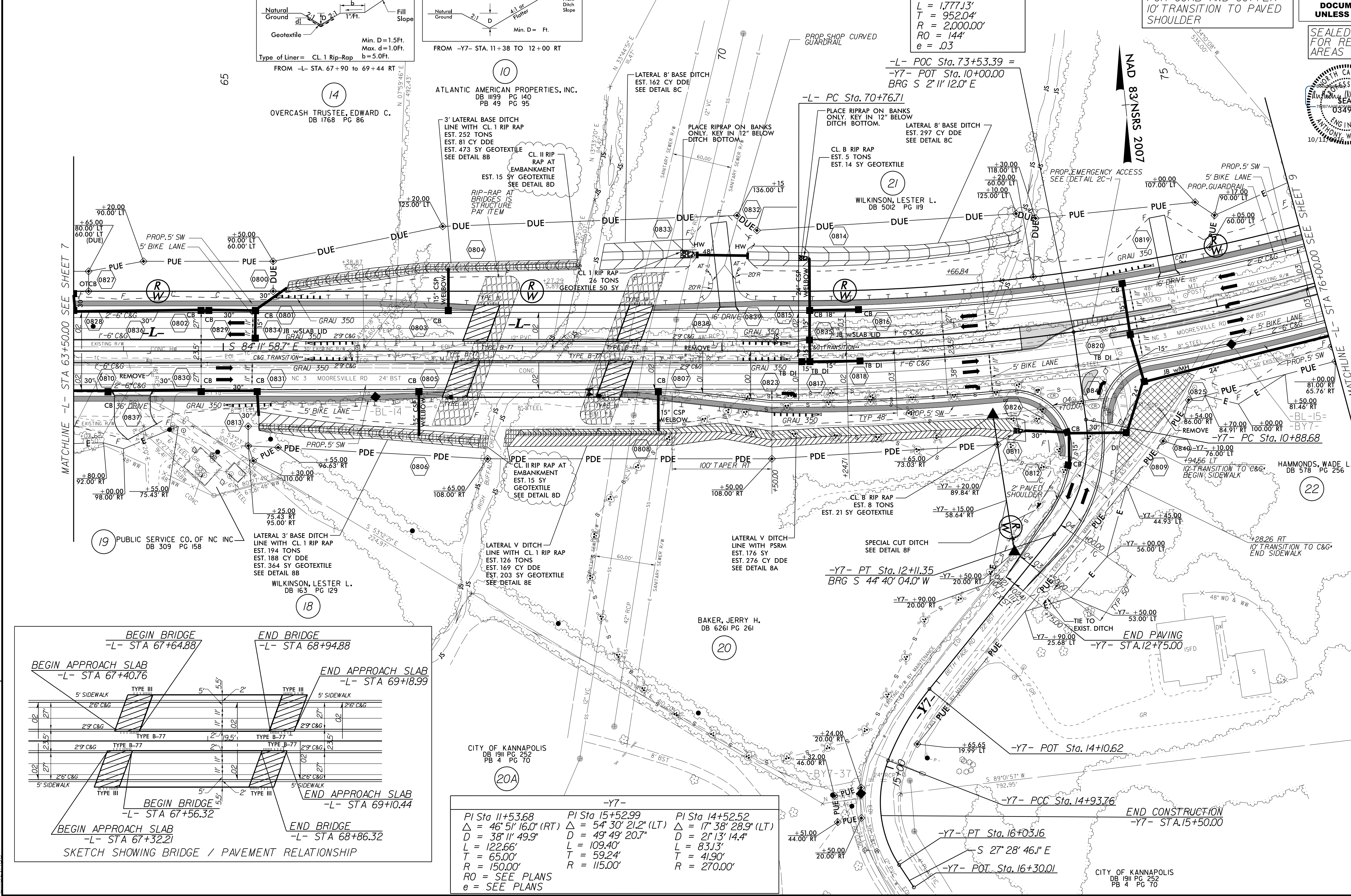


NOTE: SEE SHEET 16 THRU 17 FOR -L- PROFILE  
SEE SHEET 21 FOR -Y7- PROFILE  
SEE SHEET 2B-1 FOR -Y7- INTERSECTION DETAIL  
SEE STRUCTURES SHEET S1-I THRU S1-37 FOR LEFTMOST BRIDGE PLANS  
SEE STRUCTURES SHEET S2-I THRU S2-37 FOR RIGHTMOST BRIDGE PLANS

-L-  
PI Sta 80+28.76  
Δ = 50° 54' 39.2" (LT)  
D = 2' 5' 53.2"  
L = 1,777.13'  
T = 952.04'  
R = 2,000.00'  
RO = 144'  
e = .03

\*\*TRANSITION 1'-6" C&G TO 2'-9" C&G  
-L- STA. 65+29.10 TO STA. 65+79.45 LT & RT  
-L- STA. 70+76.71 TO STA. 71+24.71 LT & RT

\*SEE DETAIL SHEET 2C-2 FOR CURB AND GUTTER 10' TRANSITION TO PAVED SHOULDER



**-Y7-**

PI Sta 11+53.68 Δ = 46° 51' 16.0" (RT) D = 38' 11" 49.9" L = 122.66' T = 65.00' R = 150.00' RO = SEE PLANS e = SEE PLANS	PI Sta 15+52.99 Δ = 54° 30' 21.2" (LT) D = 49° 49' 20.7" L = 109.40' T = 59.24' R = 115.00'	PI Sta 14+52.52 Δ = 17° 38' 28.9" (LT) D = 21' 13" 14.4" L = 83.13' T = 41.90' R = 270.00'
---	--	---

REVISIONS

MATCHLINE -L- STA 63+50.00 SEE SHEET 7

MATCHLINE -L- STA 76+00.00 SEE SHEET 9