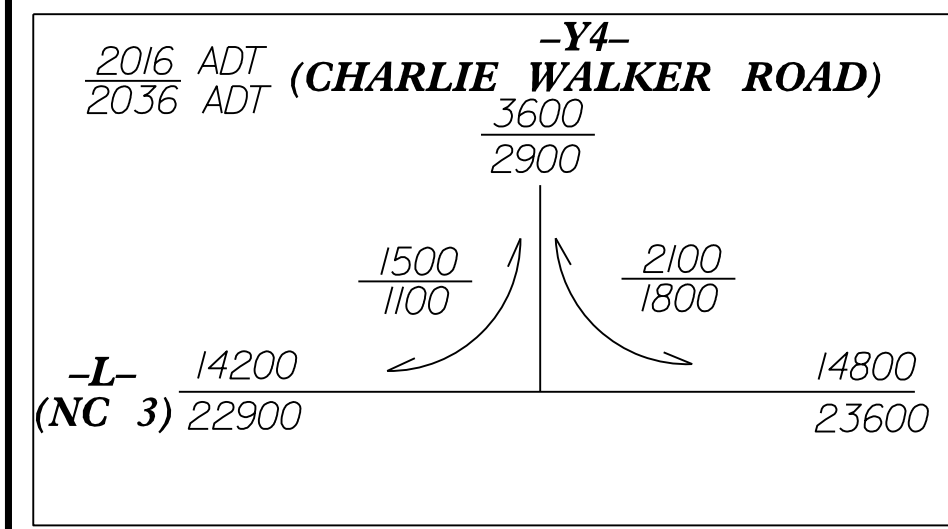


8/17/09

NOTE: SEE SHEET 15 THRU 16 FOR -L- PROFILE
SEE SHEET 21 FOR -Y4-, -Y5-, & -Y6- PROFILE
SEE SHEET 2B-1 FOR -Y4- INTERSECTION DETAIL
SEE CULVERT SHEET CI-1 THRU CI-5

*SEE DETAIL SHEET 2C-2
FOR CURB AND GUTTER
10' TRANSITION TO PAVED
SHOULDER



NOTE: DRIVEWAY RADII
ARE 5 FT UNLESS
OTHERWISE NOTED

-Y4-
PI Sta 12+10.1
Δ = 30' 10" 07.6" (RT)
D = 28' 38" 52.4"
L = 105.31'
T = 53.91'
R = 200.00'
RO = SEE PLANS
e = SEE PLANS

-Y5-
PI Sta 9+58.57
Δ = 3' 14" 23.4" (LT)
D = 2' 23" 14.4"
L = 135.71'
T = 67.87'
R = 2,400.00'

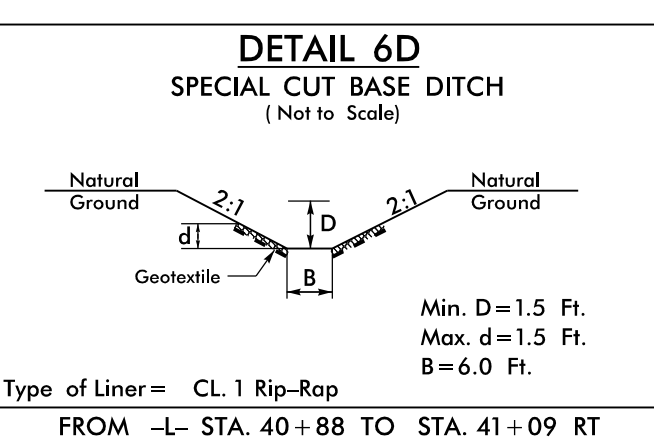
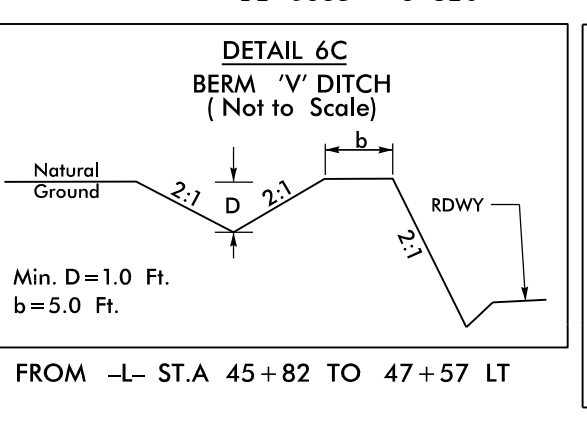
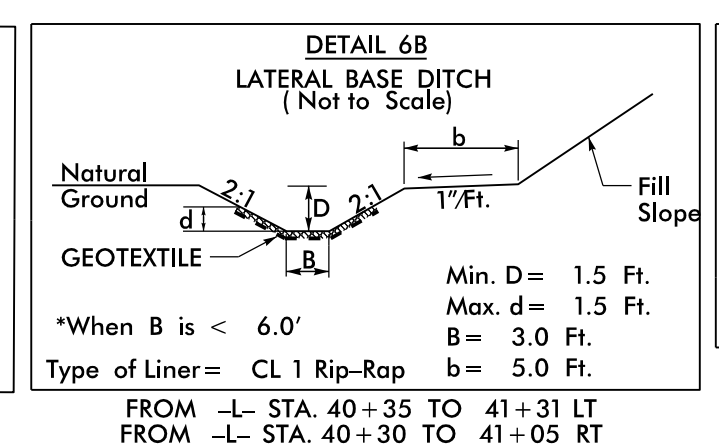
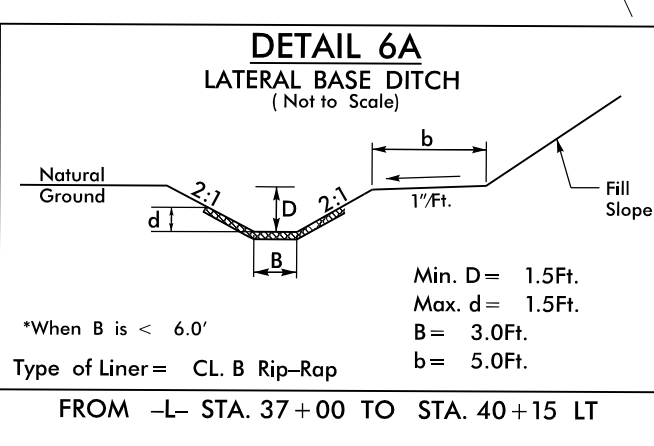
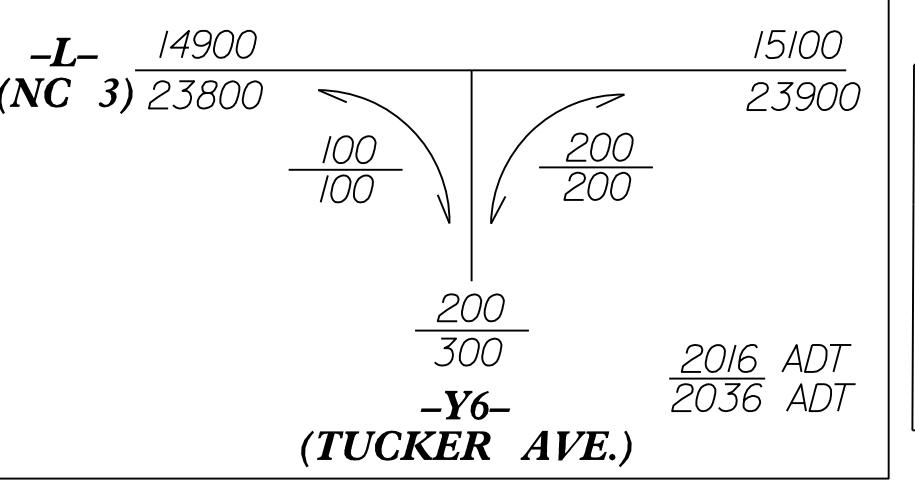
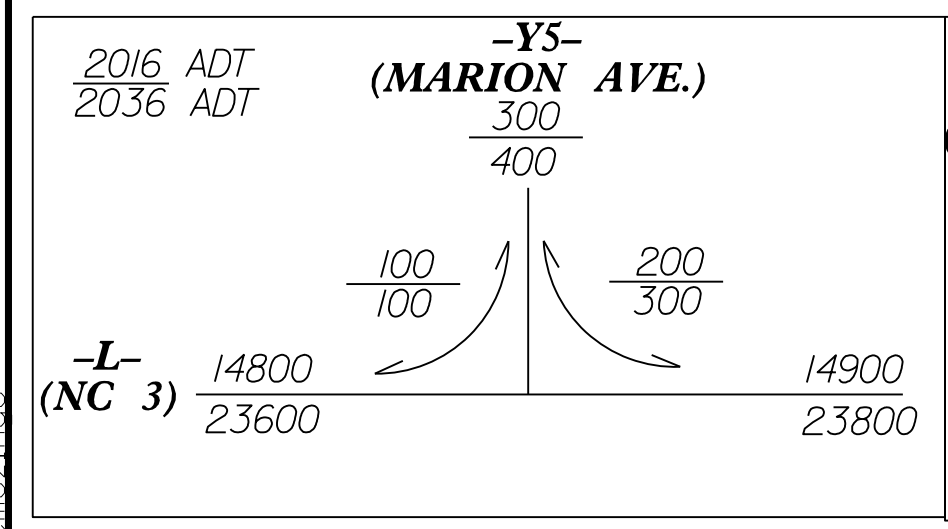
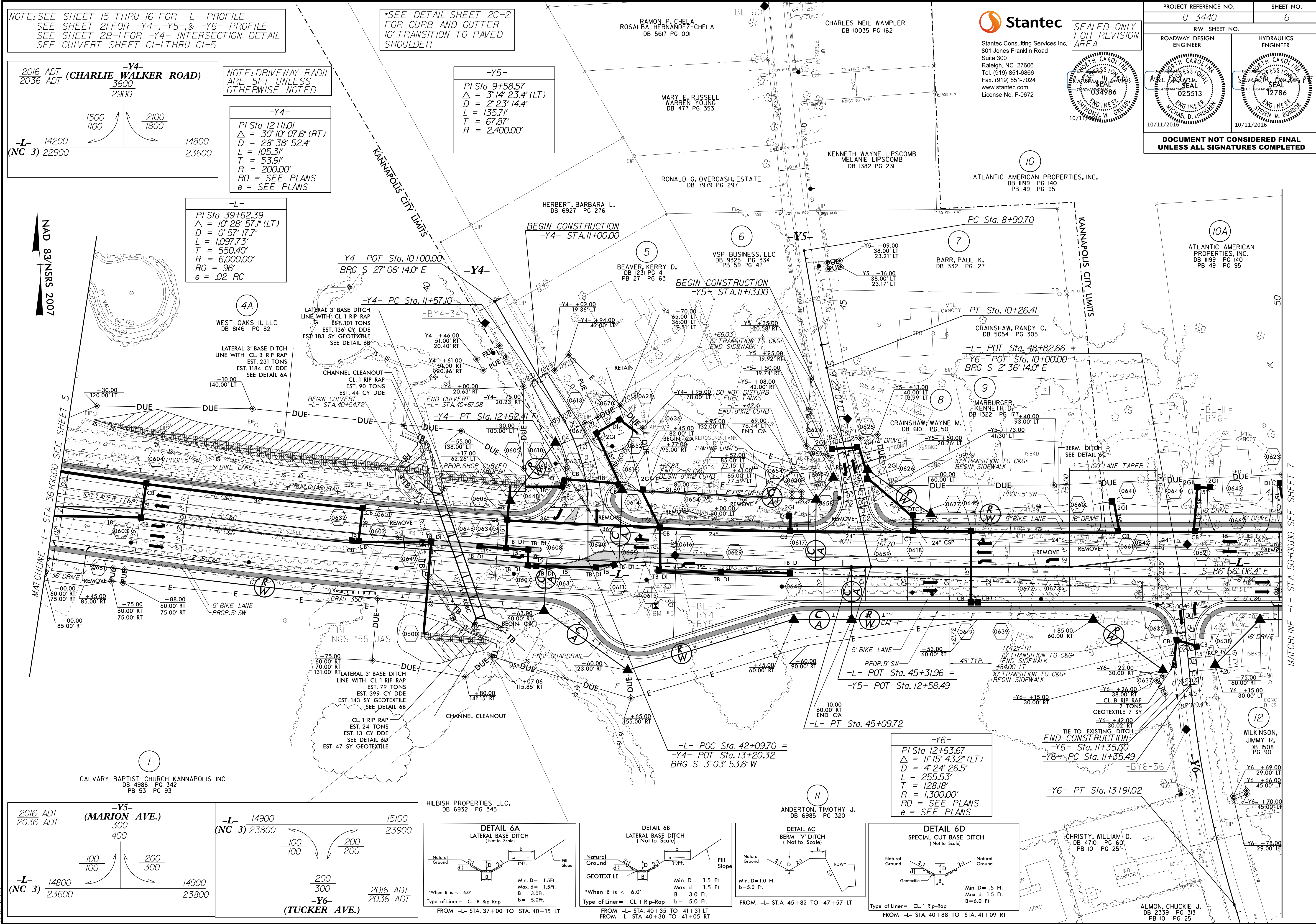
-L-
PI Sta 39+62.39
Δ = 10' 28" 57.1" (LT)
D = 0' 57" 17.7"
L = 1,097.73'
T = 550.40'
R = 6,000.00'
RO = 96'
e = .02 RC

NAD 83/NRIS 2007

Stantec
Stantec Consulting Services Inc.
801 Jones Franklin Road
Suite 300
Raleigh, NC 27606
Tel: (919) 851-6866
Fax: (919) 851-7024
www.stantec.com
License No. F-0672

SEALED ONLY
FOR REVISION
AREA

PROJECT REFERENCE NO. U-3440	SHEET NO. 6
Roadway Design ENGINEER	Hydraulics ENGINEER
10/11/2016	10/11/2016
DOCUMENT NOT CONSIDERED FINAL UNLESS ALL SIGNATURES COMPLETED	



10/11/2016
U:\Roadkey\Pro\U-3440-rd\psh6.dgn

MATCHLINE -L- STA 50+00.00 SEE SHEET 7