

PROJECT REFERENCE NO. U-3440	SHEET NO. 4
RW SHEET NO.	
ROADWAY DESIGN ENGINEER	HYDRAULICS ENGINEER
DOCUMENT NOT CONSIDERED FINAL UNLESS ALL SIGNATURES COMPLETED	

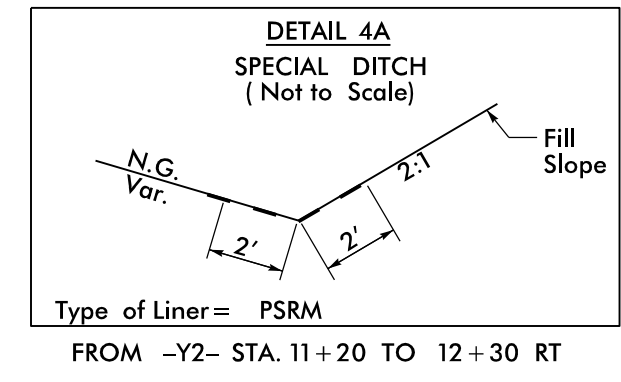
**Stantec**

Stantec Consulting Services Inc.  
801 Jones Franklin Road  
Suite 300  
Raleigh, NC 27606  
Tel. (919) 851-6866  
Fax. (919) 851-7024  
www.stantec.com  
License No. F-0672

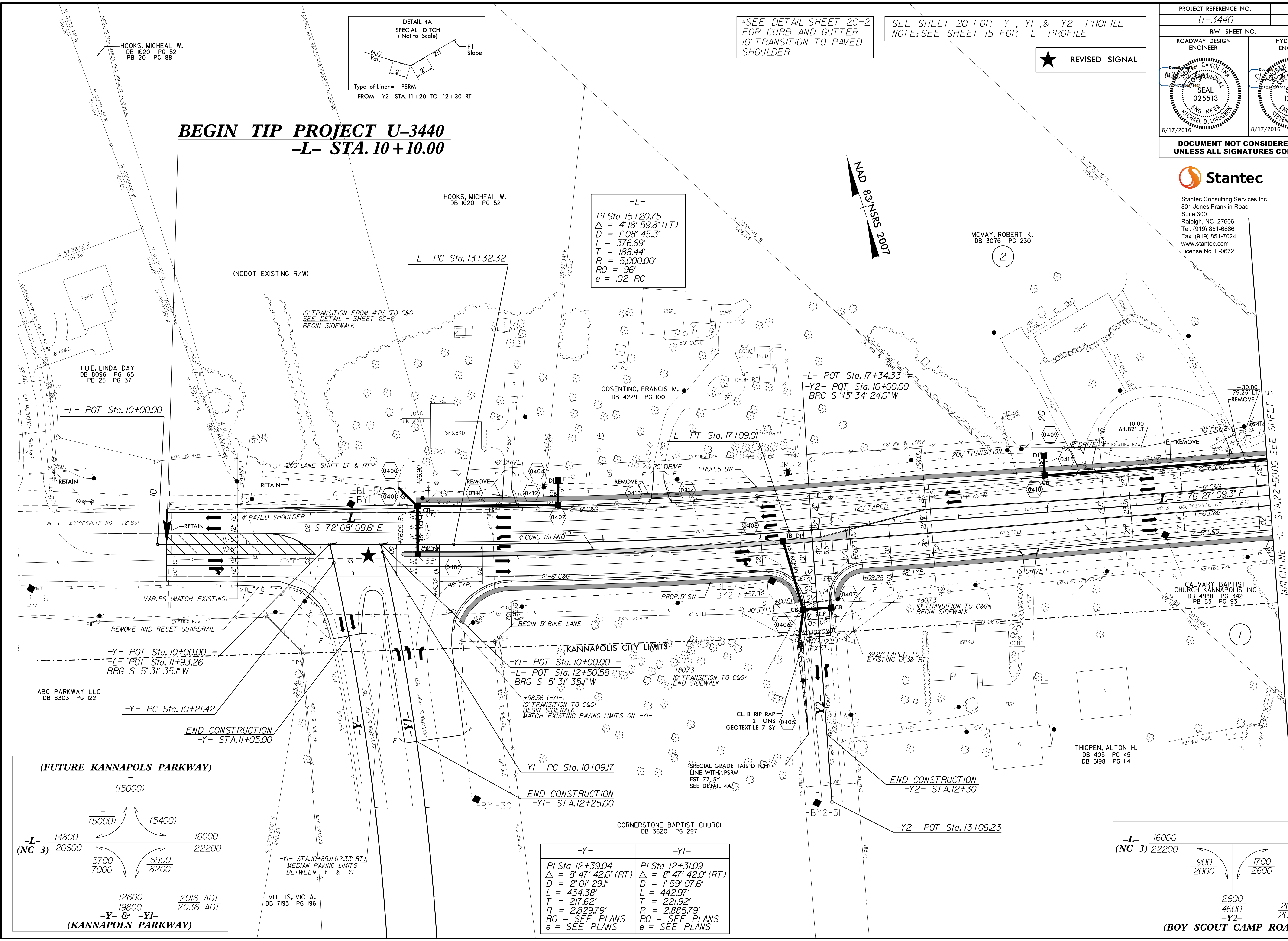
\*SEE DETAIL SHEET 2C-2 FOR CURB AND GUTTER 10' TRANSITION TO PAVED SHOULDER

SEE SHEET 20 FOR -Y-, -Y1-, & -Y2- PROFILE  
NOTE: SEE SHEET 15 FOR -L- PROFILE

★ REVISED SIGNAL



**BEGIN TIP PROJECT U-3440**  
**-L- STA. 10+10.00**



-L-

PI Sta 15+20.75
$\Delta = 4' 18'' 59.8'' (LT)$
$D = 1' 08'' 45.3''$
$L = 376.69'$
$T = 188.44'$
$R = 5,000.00'$
$RO = 96'$
$e = .02 RC$

-Y1-

PI Sta 12+39.04
$\Delta = 8' 47'' 42.0'' (RT)$
$D = 2' 01'' 29.1''$
$L = 434.38'$
$T = 217.62'$
$R = 2,829.79'$
$RO = SEE PLANS$
$e = SEE PLANS$

-Y1-

PI Sta 12+31.09
$\Delta = 8' 47'' 42.0'' (RT)$
$D = 1' 59'' 07.6''$
$L = 442.97'$
$T = 221.92'$
$R = 2,885.79'$
$RO = SEE PLANS$
$e = SEE PLANS$

-L- 16000	16800
(NC 3) 20600	22800
900	1700
2000	2600
2600	2015 ADT
4600	2035 ADT
-Y2-	
(BOY SCOUT CAMP ROAD)	

(FUTURE KANNAPOLS PARKWAY)

14800	16000
20600	22200
5700	6900
7000	8200
12600	2016 ADT
19800	2036 ADT
-Y- & -Y1-	
(KANNAPOLS PARKWAY)	

REVISIONS

8/17/99  
8/12/2016  
U:\Roadway\Proj\U-3440\_rdy\_psh4.dgn