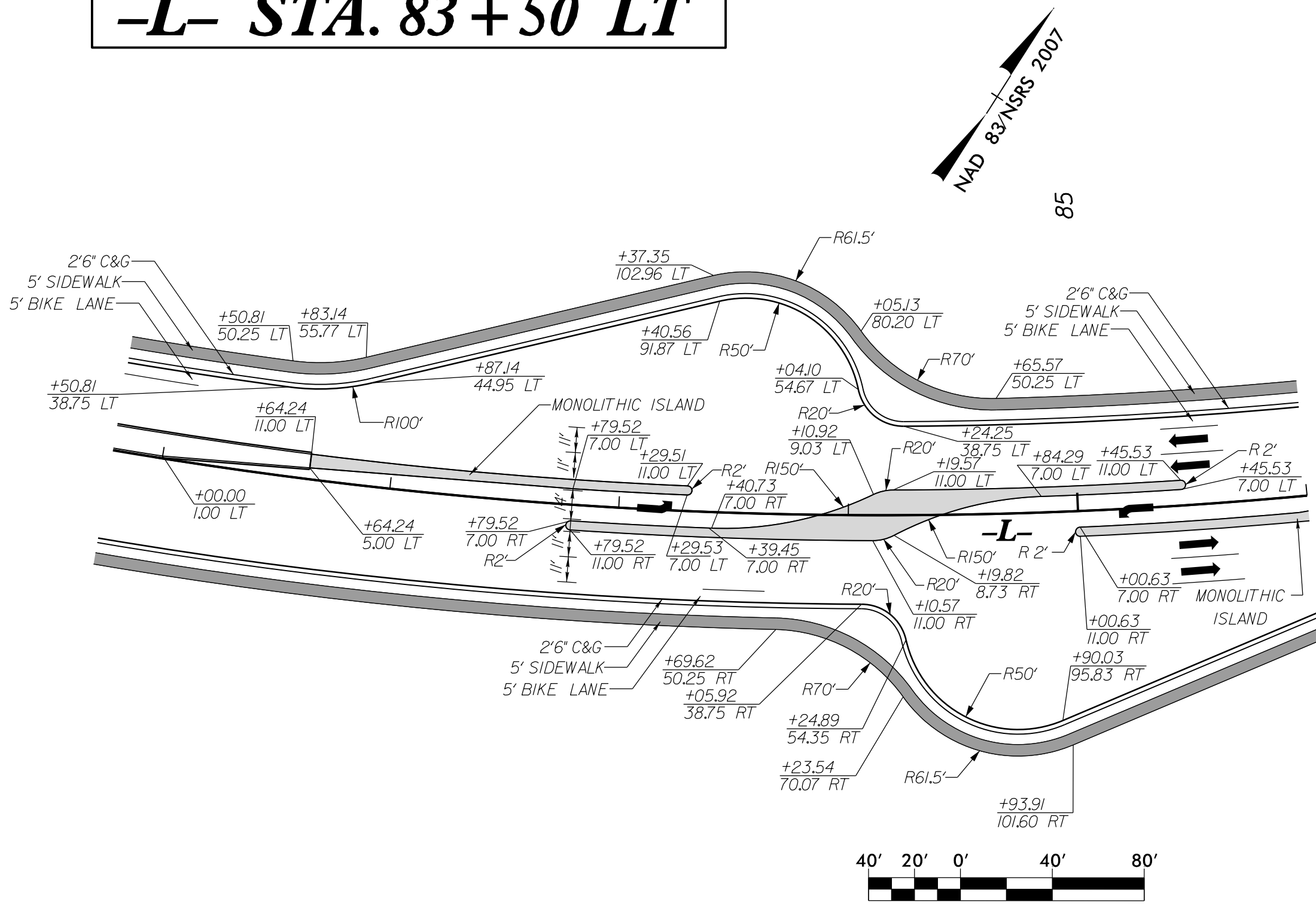
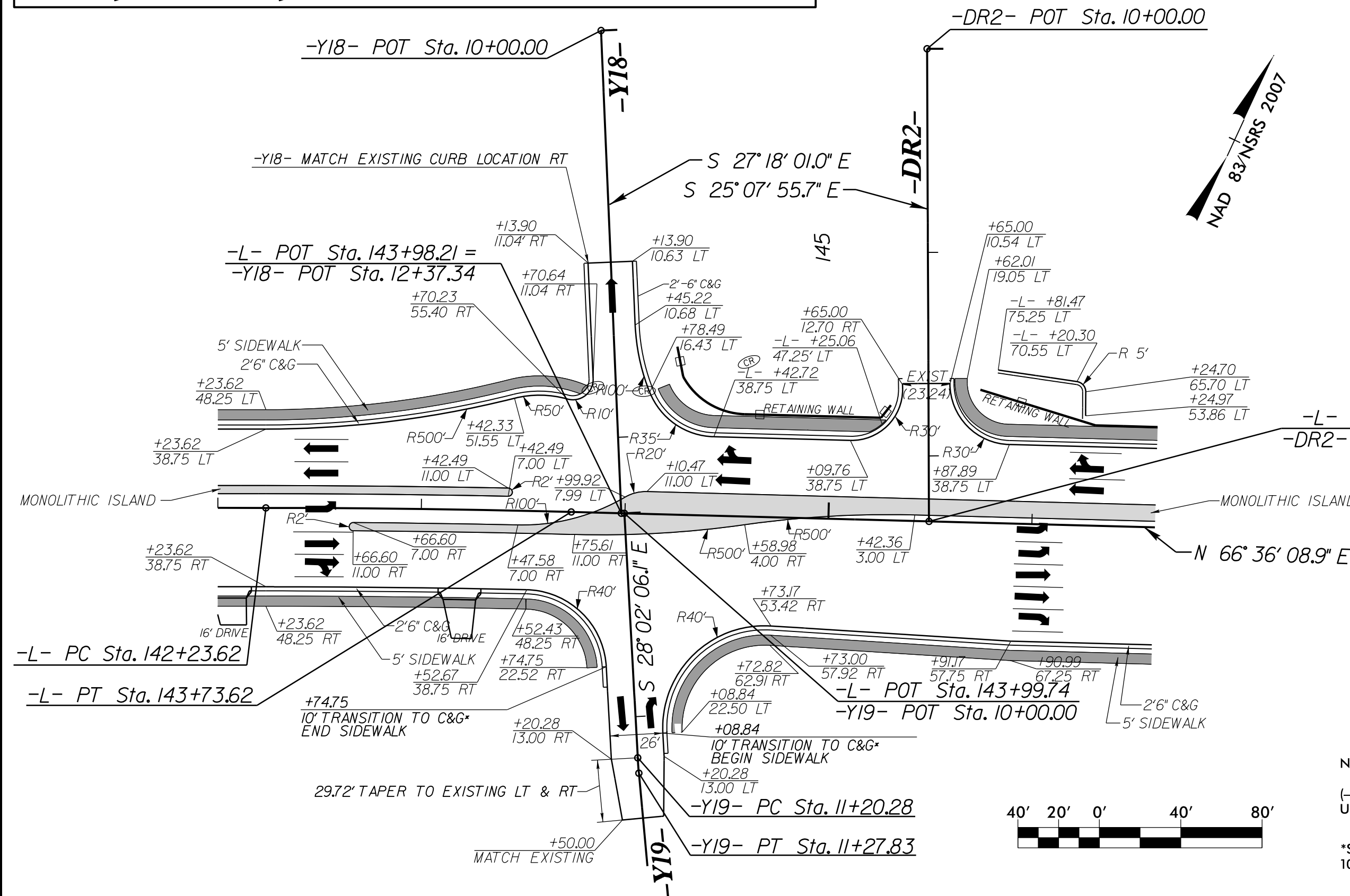


BULB-OUT DETAIL -L- STA. 83+50 LT



INTERSECTION DETAIL -L-, -Y18-, -Y19- AND -DR2-



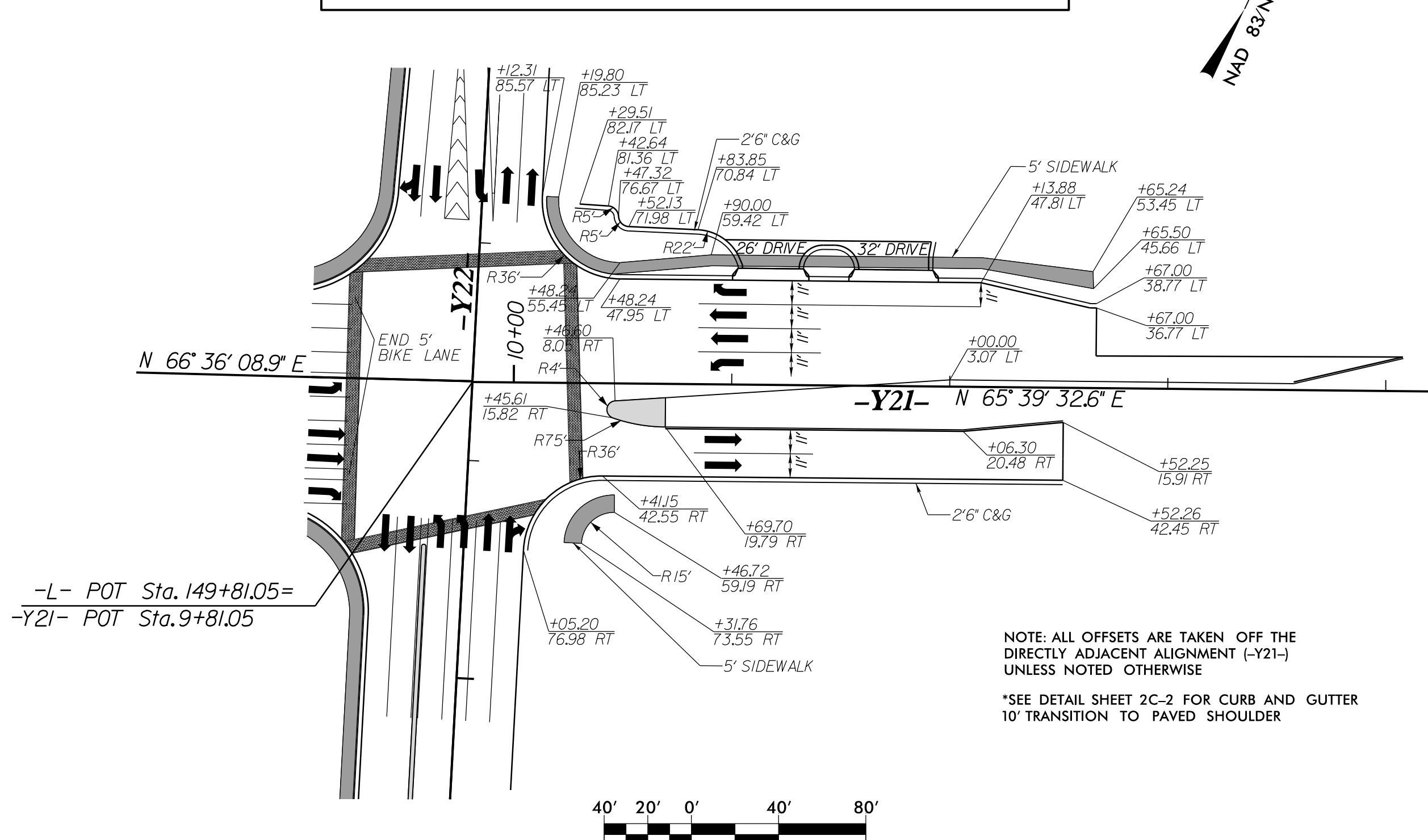
PROJECT REFERENCE NO.	SHEET NO.
U-3440	2B-2
RW SHEET NO.	
ROADWAY DESIGN ENGINEER	
10/5/2016	
DOCUMENT NOT CONSIDERED FINAL UNLESS ALL SIGNATURES COMPLETED	

Stantec Consulting Services Inc.
801 Jones Franklin Road
Suite 300
Raleigh, NC 27606
Tel. (919) 851-6866
Fax. (919) 851-7024
www.stantec.com
License No. F-0672

NOTE: ALL OFFSETS ARE TAKEN OFF THE DIRECTLY ADJACENT ALIGNMENT (-L-, -Y18-, -Y19-, AND -DR2-) UNLESS NOTED OTHERWISE

*SEE DETAIL SHEET 2C-2 FOR CURB AND GUTTER 10' TRANSITION TO PAVED SHOULDER.

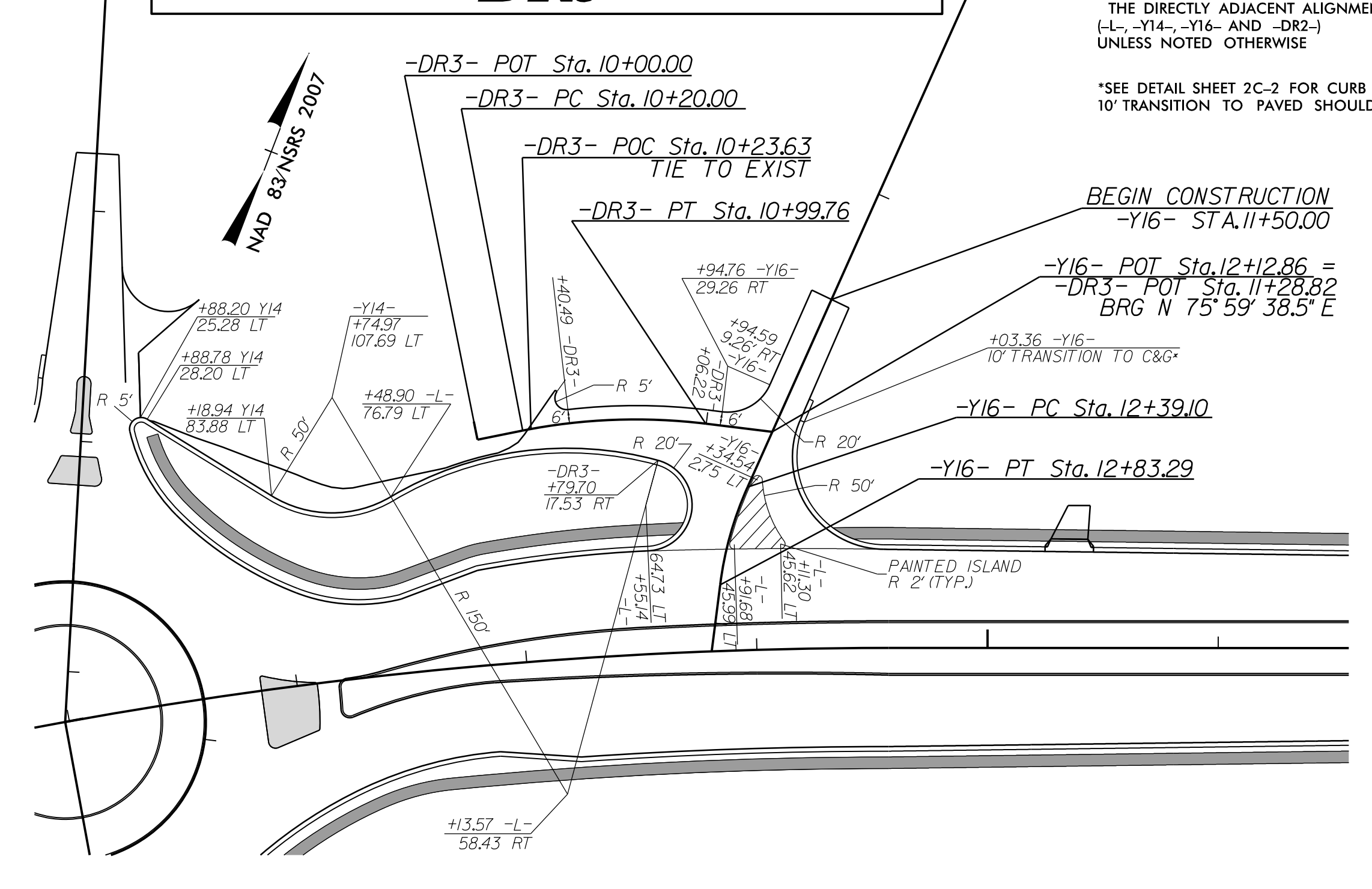
INTERSECTION DETAIL -Y21-



NOTE: ALL OFFSETS ARE TAKEN OFF THE DIRECTLY ADJACENT ALIGNMENT (-Y21-) UNLESS NOTED OTHERWISE

*SEE DETAIL SHEET 2C-2 FOR CURB AND GUTTER 10' TRANSITION TO PAVED SHOULDER

INTERSECTION DETAIL -DR3-



NOTE: ALL OFFSETS ARE TAKEN OFF THE DIRECTLY ADJACENT ALIGNMENT (-L-, -Y14-, -Y16- AND -DR2-) UNLESS NOTED OTHERWISE

*SEE DETAIL SHEET 2C-2 FOR CURB AND GUTTER 10' TRANSITION TO PAVED SHOULDER.