

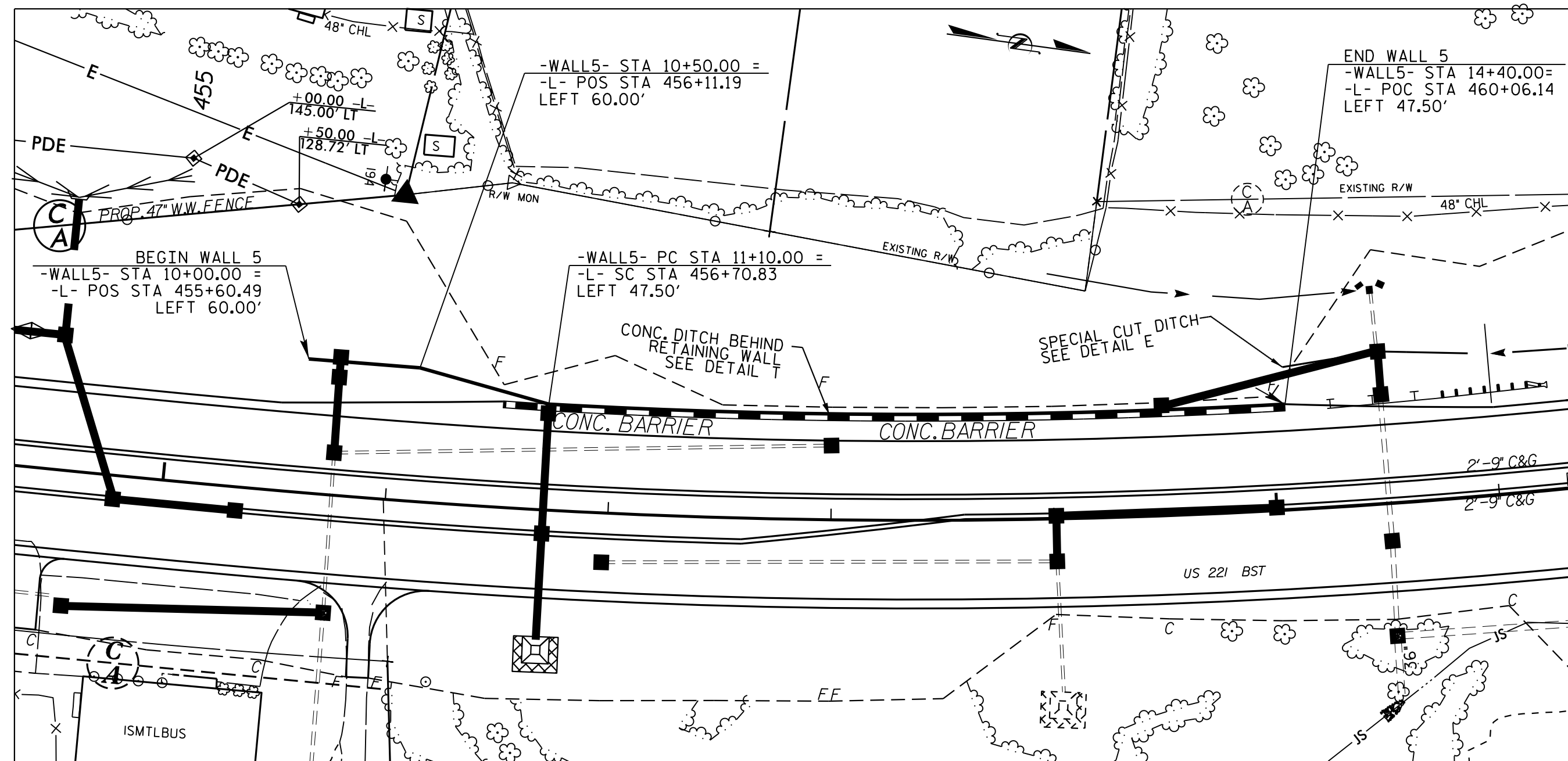
8/17/99

GEOTECHNICAL ENGINEER

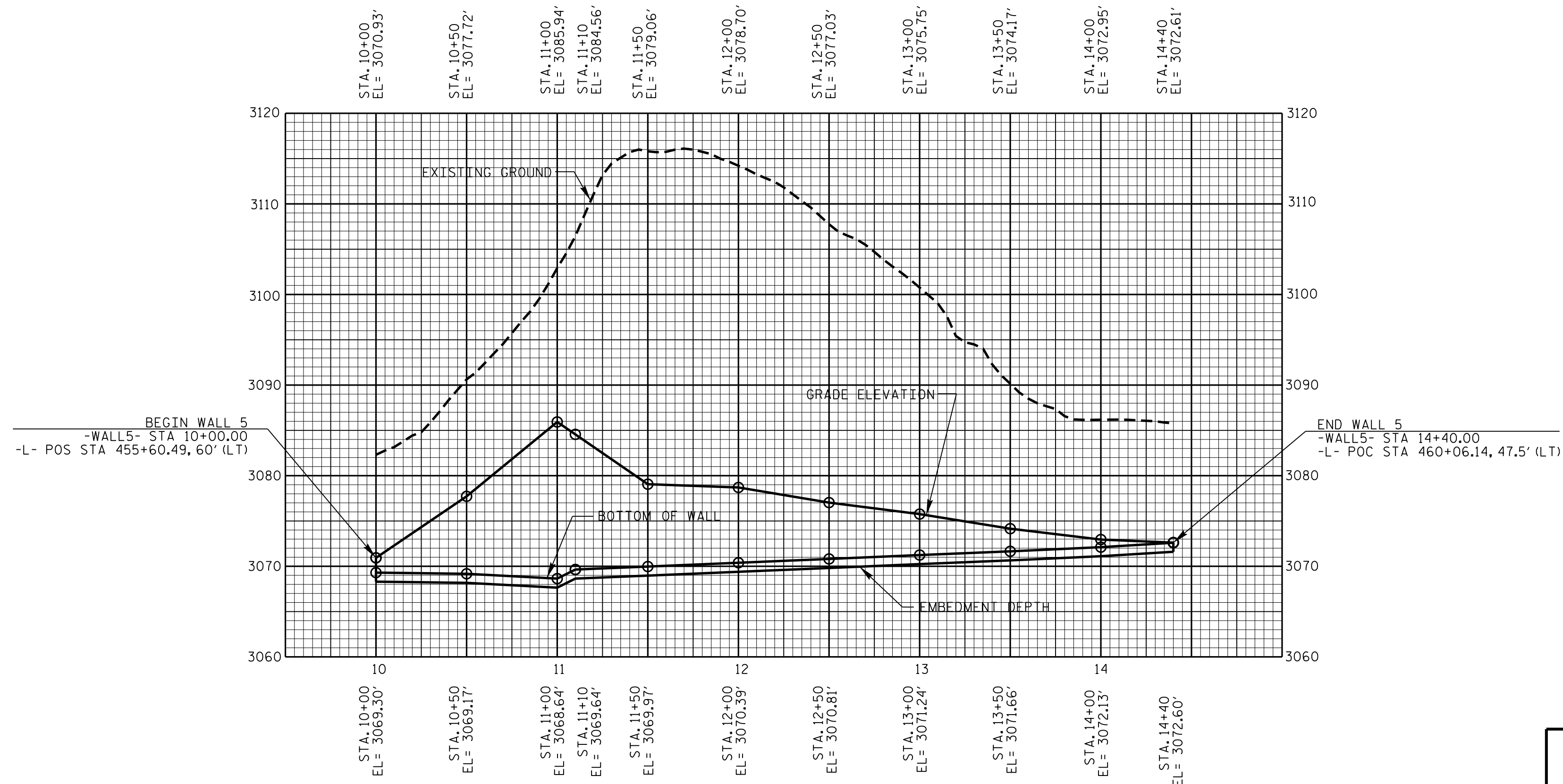
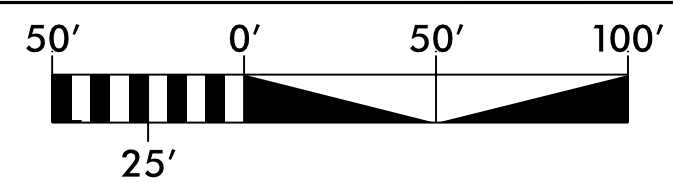
ENGINEER

DocuSigned by:  
Michael H. Stephens  
7/26/2016

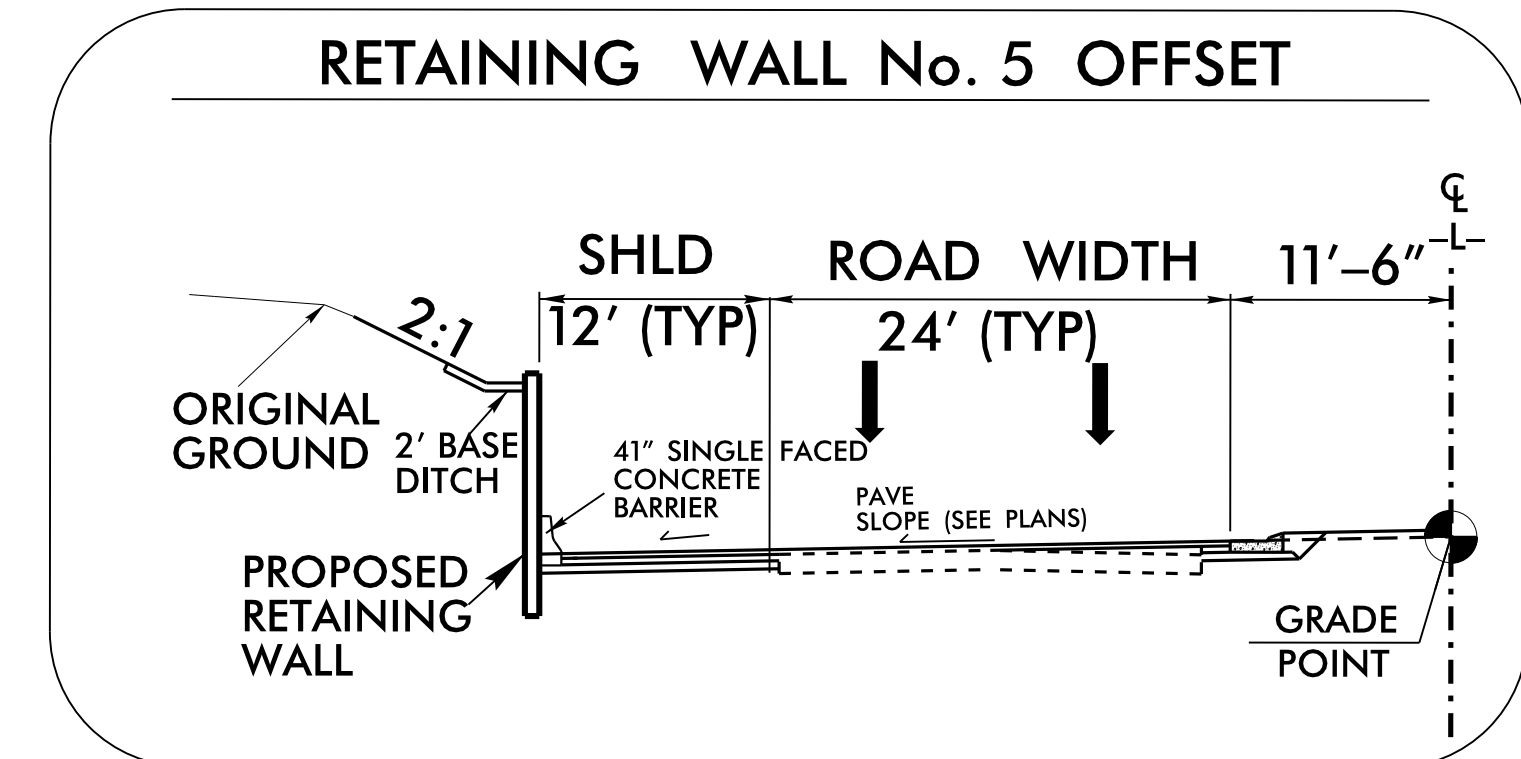
**DOCUMENT NOT CONSIDERED FINAL  
UNLESS ALL SIGNATURES COMPLETED**



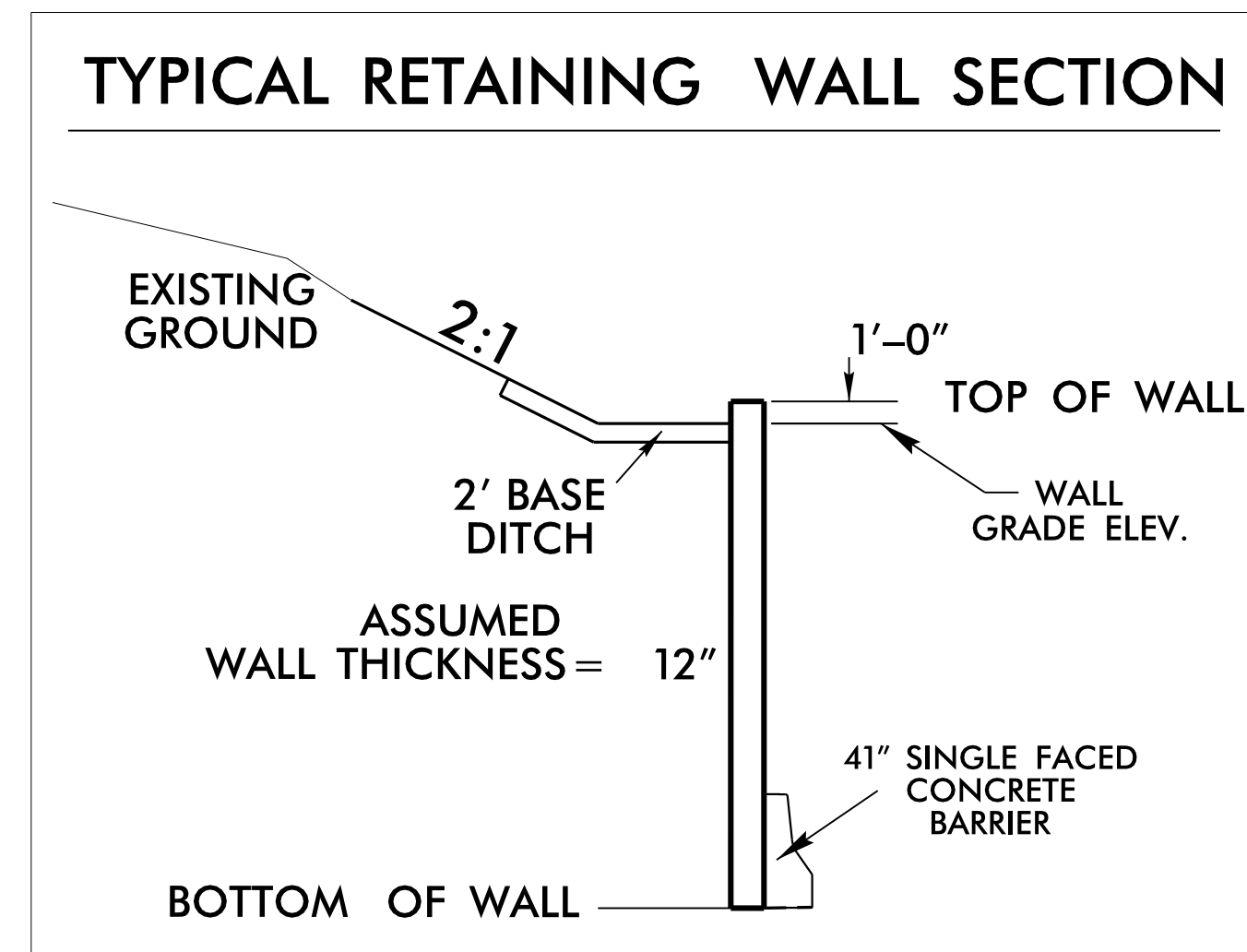
PLAN VIEW - RETAINING WALL NO. 5



WALL ENVELOPE - RETAINING WALL NO. 5



USE DETAIL AS FOLLOWS:  
-L- STA. 455+60.49 TO STA. 460+06.14 LT.



ESTIMATED SOIL NAIL WALL QUANTITIES

RETAINING WALL NO.	SOIL NAIL RETAINING WALLS (SQUARE FEET)	SOIL NAIL VERIFICATION TESTS	SOIL NAIL PROOF TESTS
5	* 3,325 SQUARE FEET	2	14

\* WALL AREA IS MEASURED USING THE DESIGN HEIGHT "H"

PROJECT NO.: 34518.1.4 (R-2915C)  
 ASHE COUNTY  
 STATION: STA 455+61 TO 460+06 -L-  
 SHEET 1 OF 3

PREPARED BY: MHS      DATE: 7/21/16  
 REVIEWED BY: SCC      DATE: 7/21/16

**NORTH CAROLINA  
DEPARTMENT OF TRANSPORTATION  
DIVISION OF HIGHWAYS**

**GEOTECHNICAL  
ENGINEERING UNIT**

REVISIONS						SHEET NO. W-8
NO.	BY	DATE	NO.	BY	DATE	
1			3			
2			4			