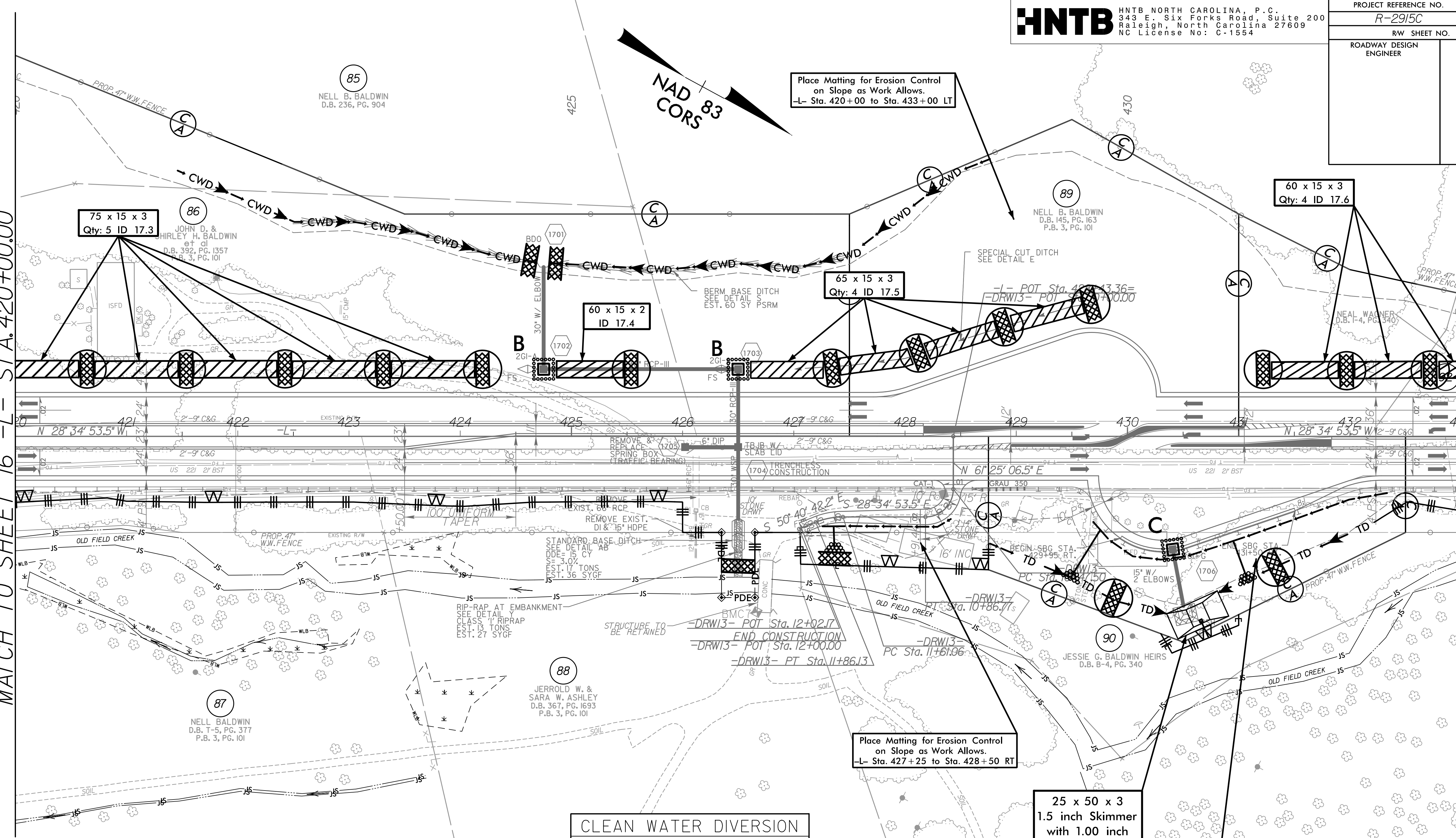


PROJECT REFERENCE NO. R-2915C	SHEET NO. EC-37/CONST.17
RW SHEET NO.	
ROADWAY DESIGN ENGINEER	HYDRAULICS ENGINEER

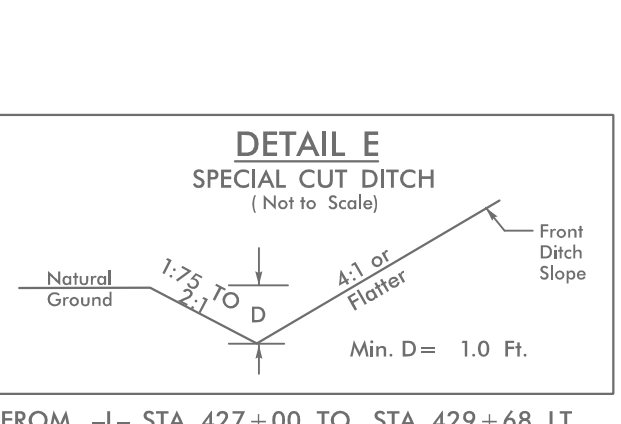
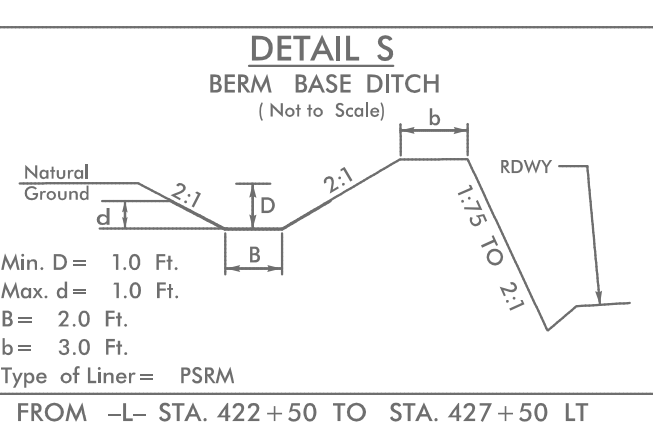
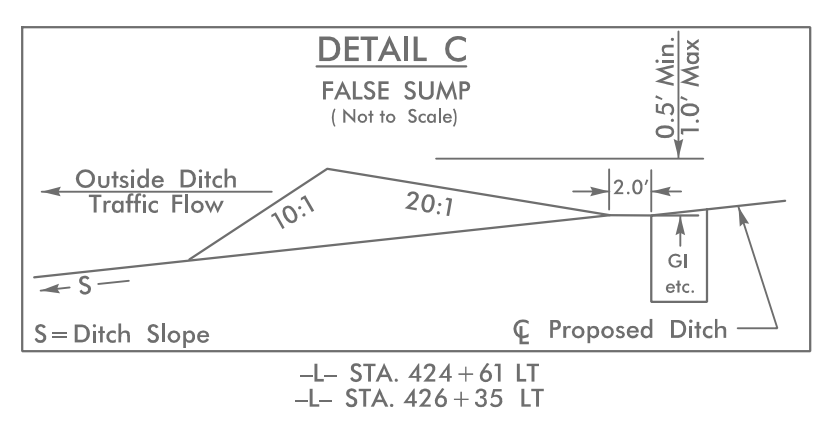
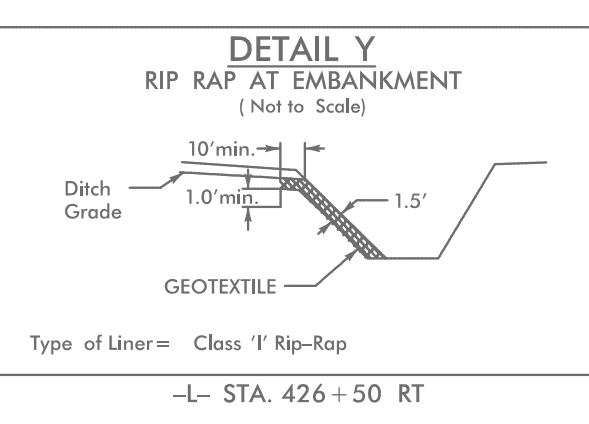
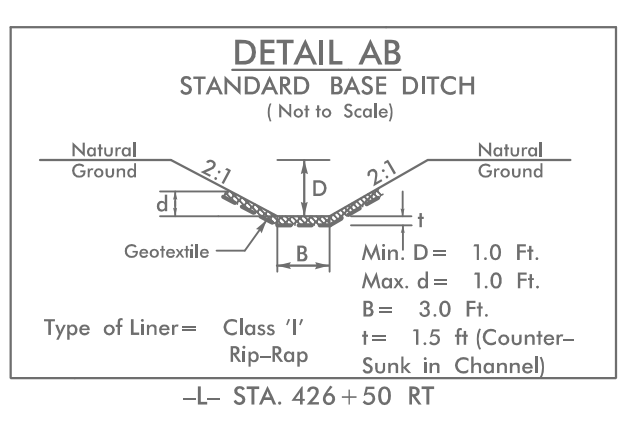
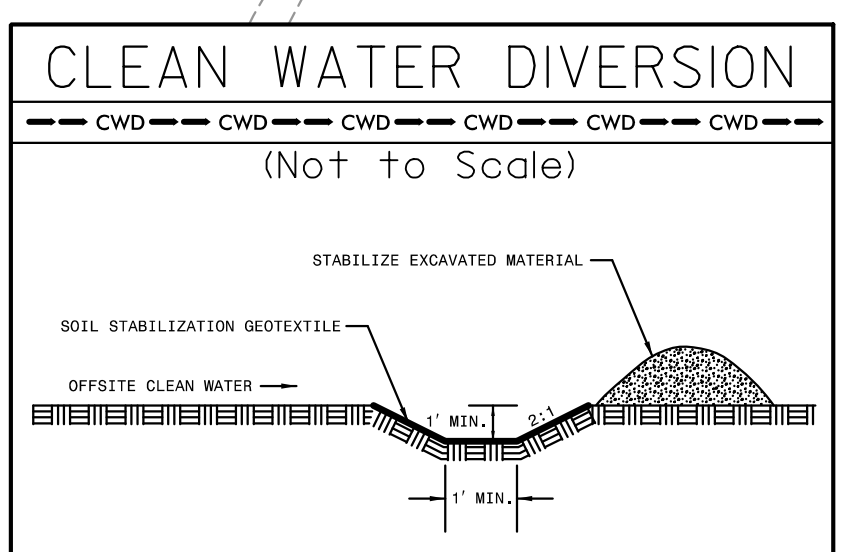
MATCH TO SHEET 16 -L- STA. 420+00.00

MATCH TO SHEET 18 -L- STA. 433+00.00



INSTALL MATTING FOR EROSION CONTROL IN PROPOSED DITCH LINES. (SEE MATTING SUMMARY)

UTILIZE FABRIC INSERT INLET PROTECTION DEVICE IN LIEU OF ROCK INLET SEDIMENT TRAP TYPE 'C' TO AVOID IMPOUNDING RUNOFF ON ROADWAY OPEN TO PUBLIC AND AS DIRECTED.



REVISIONS

12:54:56 PM R-2915C.ec_PSH17.dgn