

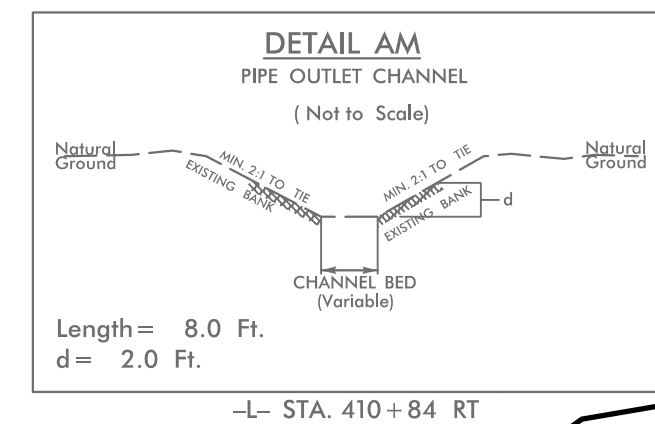
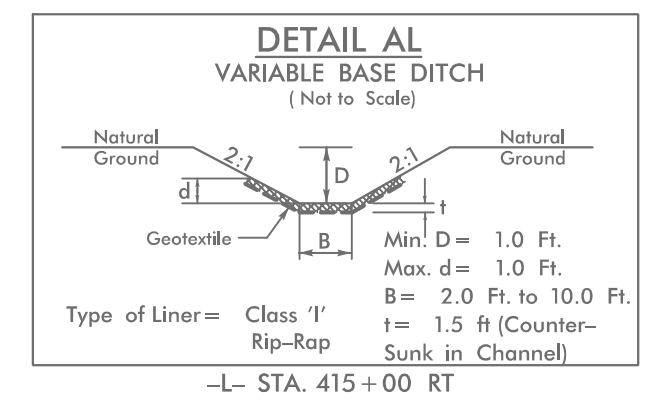
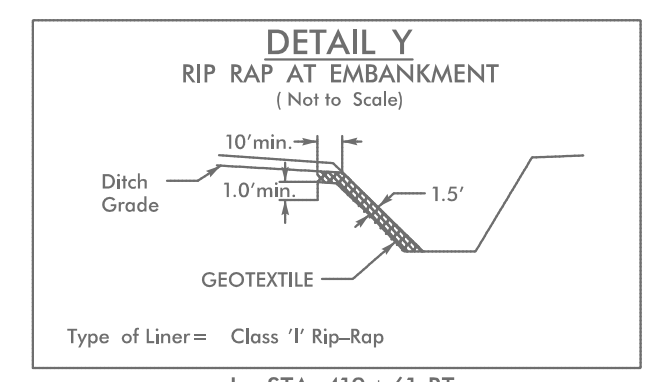
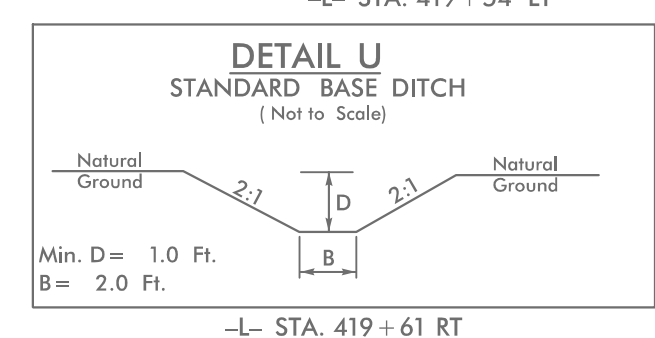
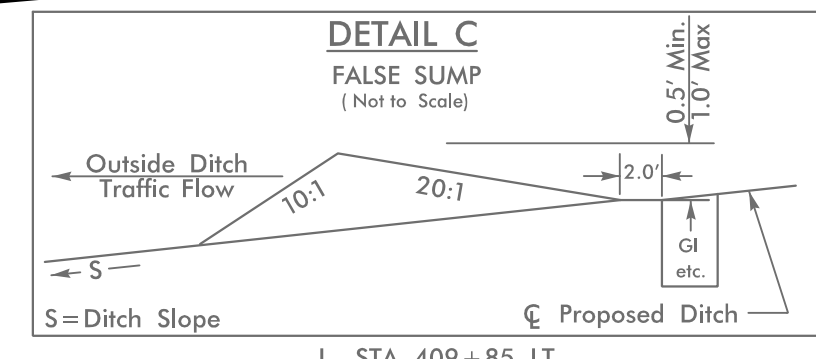
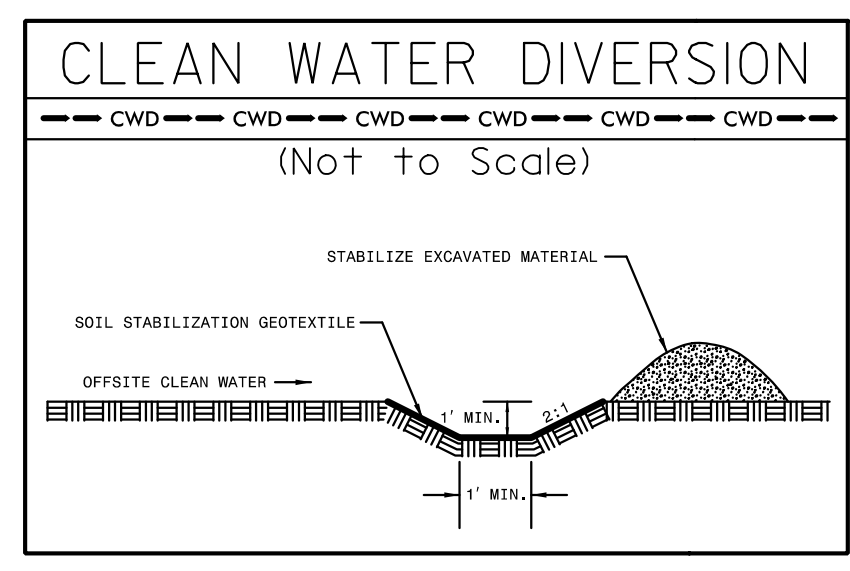
8/17/99

PROJECT REFERENCE NO. <i>R-2915C</i>	SHEET NO. <i>EC-36/CONST.16</i>
RW SHEET NO.	
ROADWAY DESIGN ENGINEER	HYDRAULICS ENGINEER

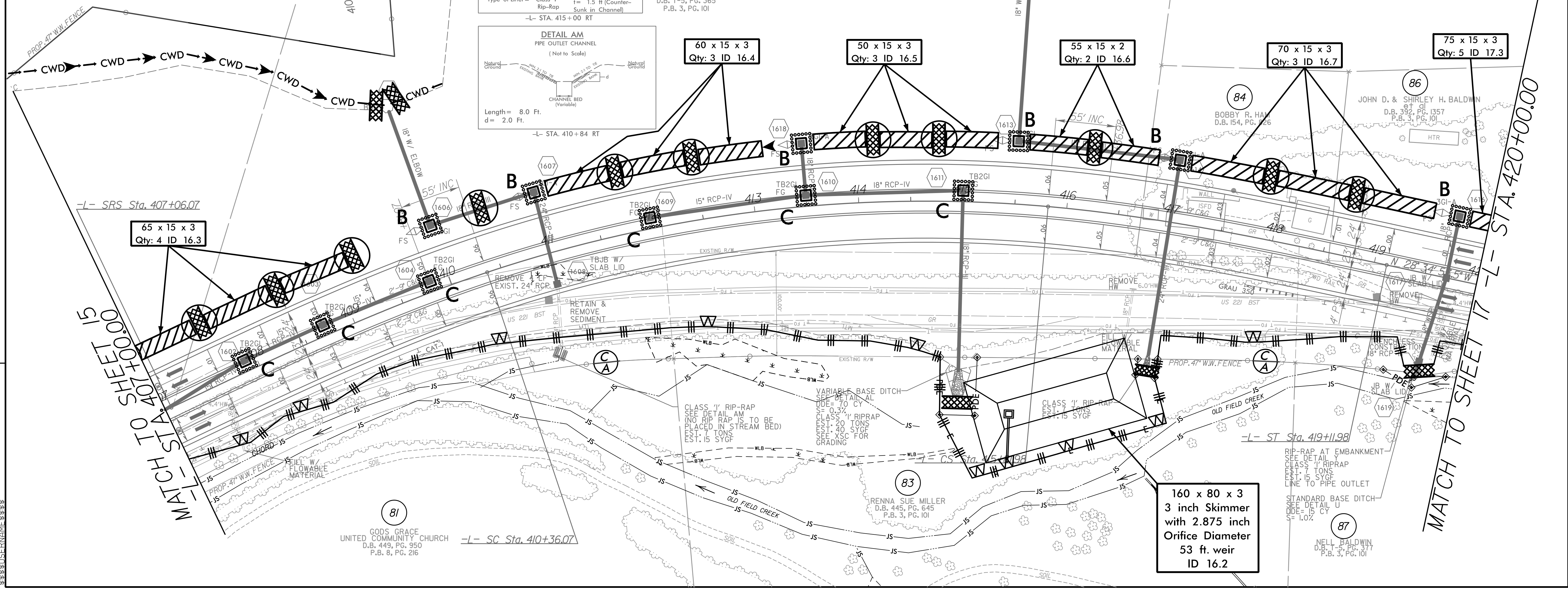
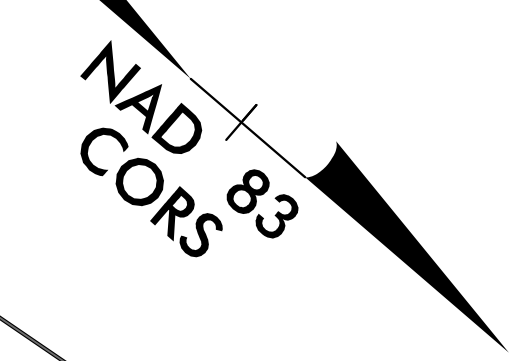
MATCH TO SHEET 23 -L- STA. 413+50 @ 625.00' LT.

INSTALL MATTING FOR EROSION CONTROL IN PROPOSED DITCH LINES. (SEE MATTING SUMMARY)

UTILIZE FABRIC INSERT INLET PROTECTION DEVICE IN LIEU OF ROCK INLET SEDIMENT TRAP TYPE 'C' TO AVOID IMPOUNDING RUNOFF ON ROADWAY OPEN TO PUBLIC AND AS DIRECTED.



Place Matting for Erosion Control on Slope as Work Allows.
 -L- Sta. 407+00 to Sta. 420+00 LT



REVISIONS

12/5/33 PV
 R-2915C.ec_PSH16.dgn
 \$\$\$\$\$\$
 \$\$\$\$\$\$

MATCH TO SHEET 15
 -L- STA. 407+00.00

MATCH TO SHEET 17
 -L- STA. 420+00.00

-L- SRS Sta. 407+06.07

-L- SC Sta. 410+36.07

-L- ST Sta. 419+11.98

81
 GODS GRACE
 UNITED COMMUNITY CHURCH
 D.B. 449, PG. 950
 P.B. 8, PG. 216

82
 GERTRUDE LUCAS
 D.B. T-5, PG. 365
 P.B. 3, PG. 101

85
 NELL B. BALDWIN
 D.B. 236, PG. 904

86
 JOHN D. & SHIRLEY H. BALDWIN
 D.B. 332, PG. 1357
 P.B. 3, PG. 101

84
 BOBBY R. HAN
 D.B. 154, PG. 226

83
 RENNA SUE MILLER
 D.B. 445, PG. 645
 P.B. 3, PG. 101

87
 NELL BALDWIN
 D.B. 3, PG. 101

CLASS 1 RIP-RAP
 SEE DETAIL AM
 (NO RIP-RAP TO BE
 PLACED IN STREAM BED)
 EST. 7 TONS
 EST. 15 SYCF

VARIABLE BASE DITCH
 SEE DETAIL AL
 SIDE OF TAIL
 SIDE TO CY
 EST. 70 TONS
 EST. 40 SYCF
 SEE XSC FOR
 GRADING

RIP-RAP AT EMBANKMENT
 SEE DETAIL Y
 CLASS 1 RIP-RAP
 EST. 7 TONS
 EST. 15 SYCF
 LINE TO PIPE OUTLET

STANDARD BASE DITCH
 SEE DETAIL U
 DDE = 15 CY
 S = 1.0%