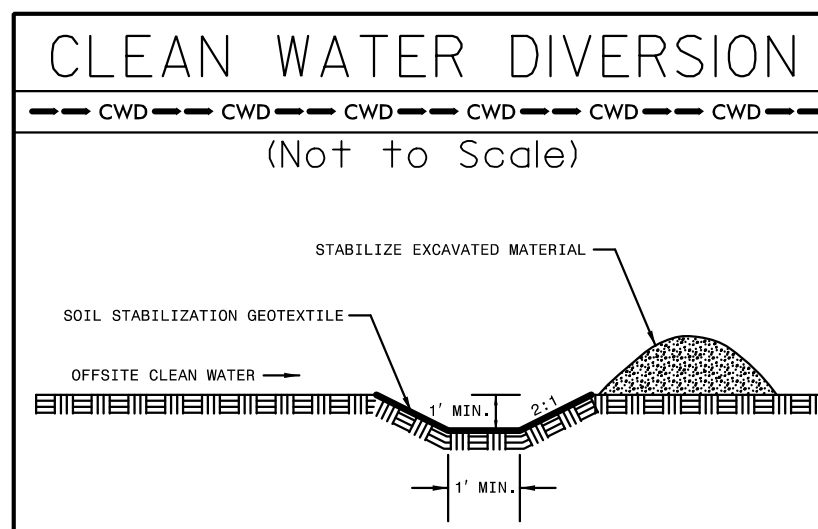
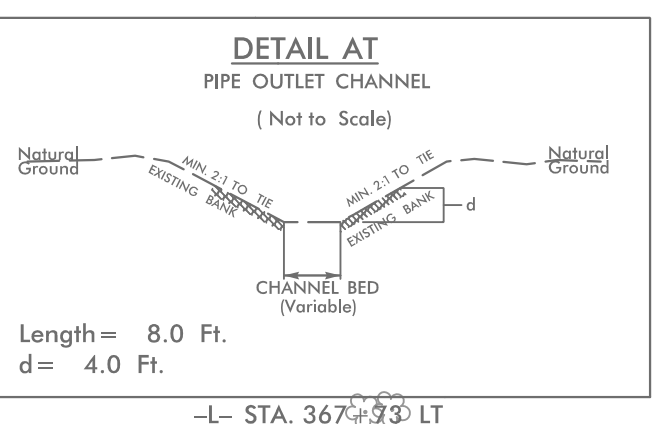
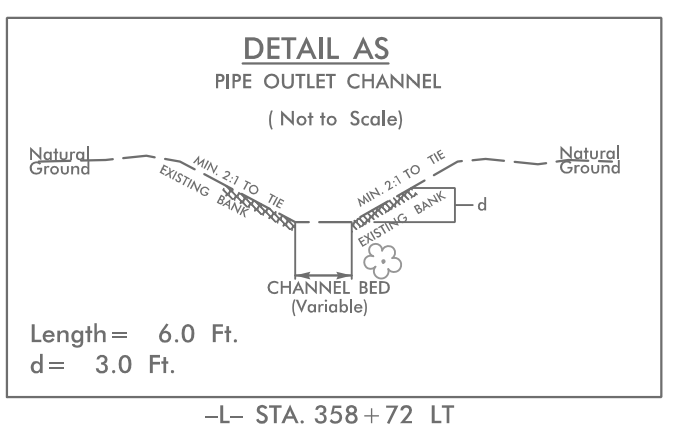
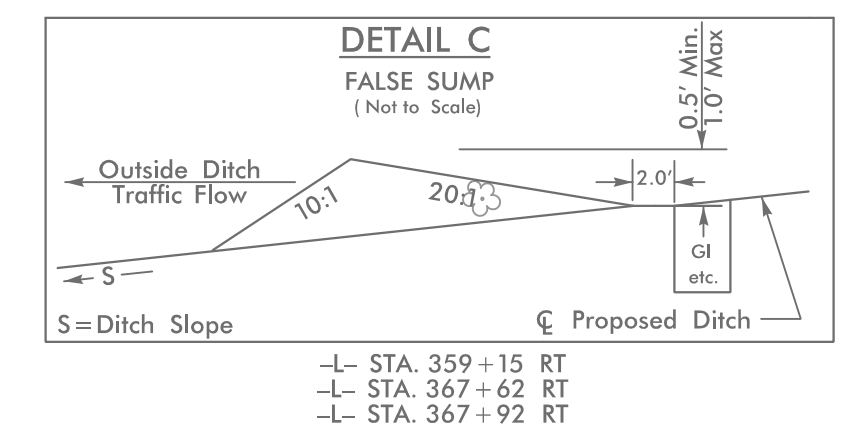
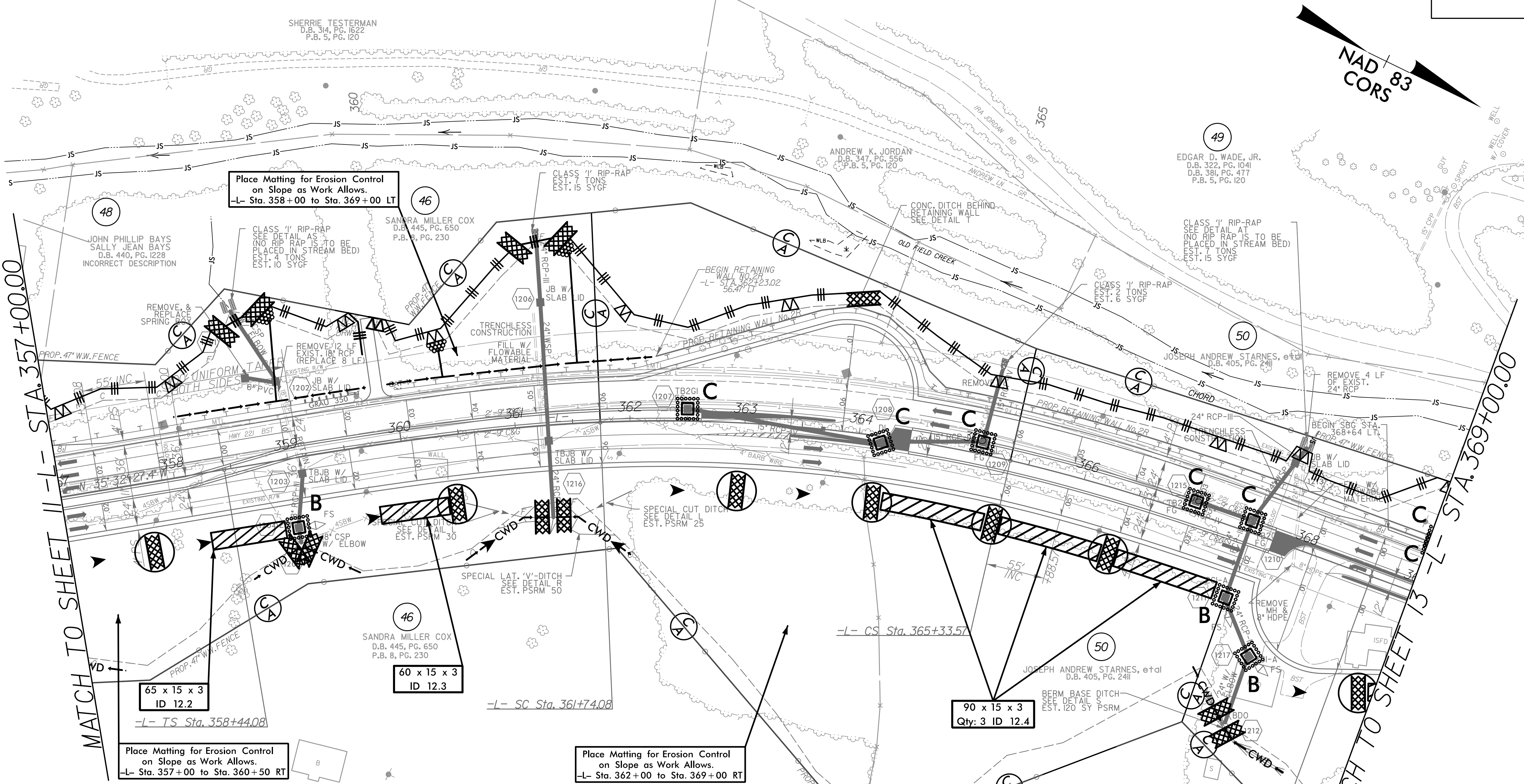
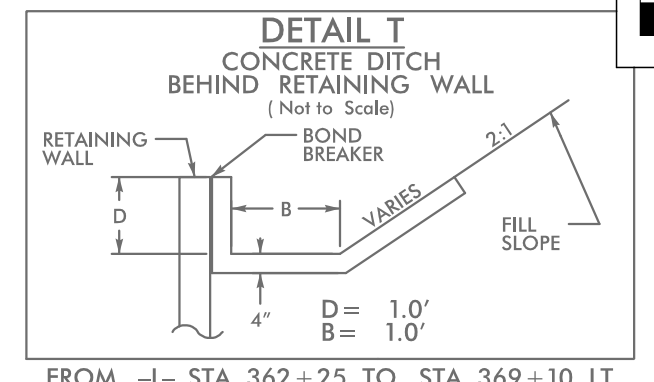
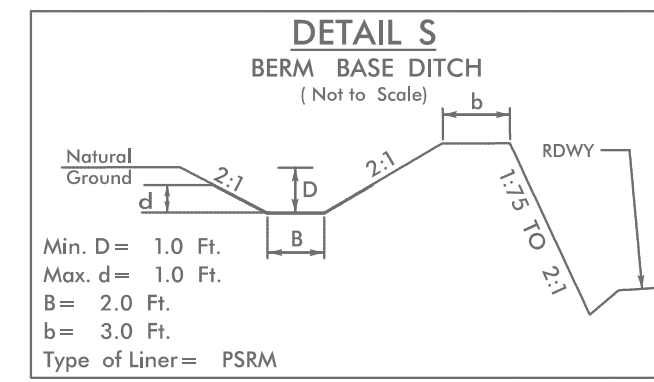
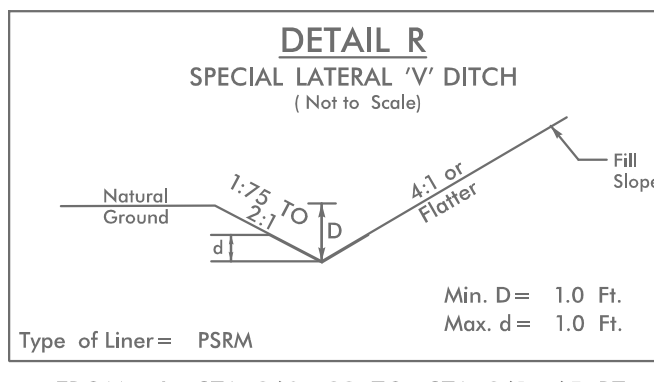
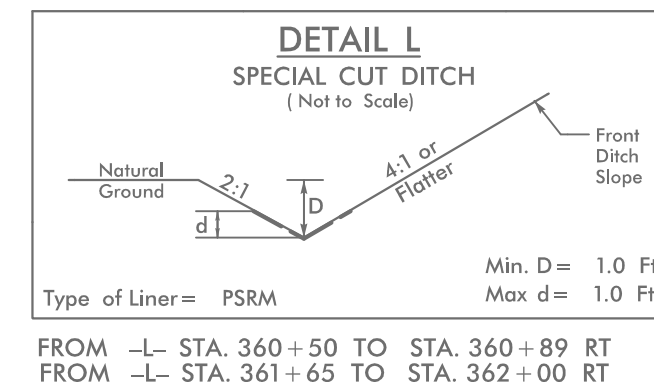


8/17/99

PROJECT REFERENCE NO. <i>R-2915C</i>	SHEET NO. <i>EC-32/CONST.12</i>
RW SHEET NO.	
ROADWAY DESIGN ENGINEER	HYDRAULICS ENGINEER



UTILIZE FABRIC INSERT INLET PROTECTION DEVICE IN LIEU OF ROCK INLET SEDIMENT TRAP TYPE 'C' TO AVOID IMPOUNDING RUNOFF ON ROADWAY OPEN TO PUBLIC AND AS DIRECTED.

INSTALL MATTING FOR EROSION CONTROL IN PROPOSED DITCH LINES. (SEE MATTING SUMMARY)

REVISIONS

12/18/09 PM
 Design: R-2915C.ec_PSH12.dgn
 \$\$\$\$\$\$
 \$\$\$\$\$\$