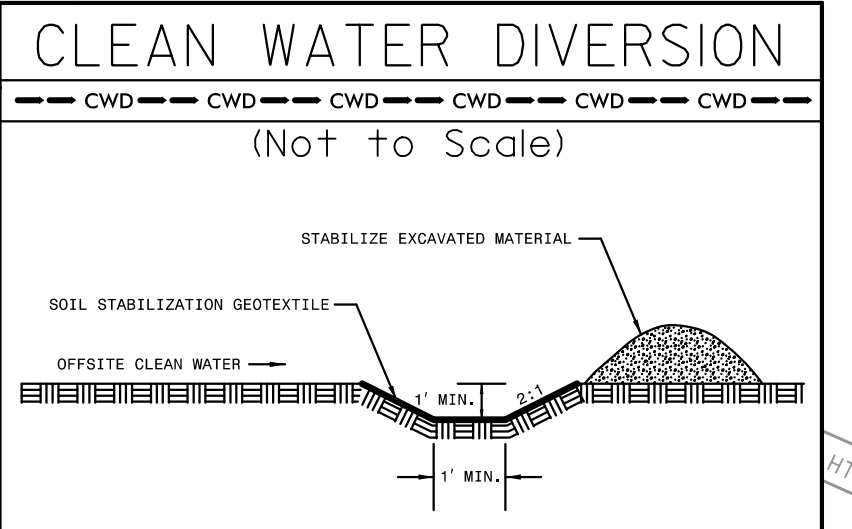
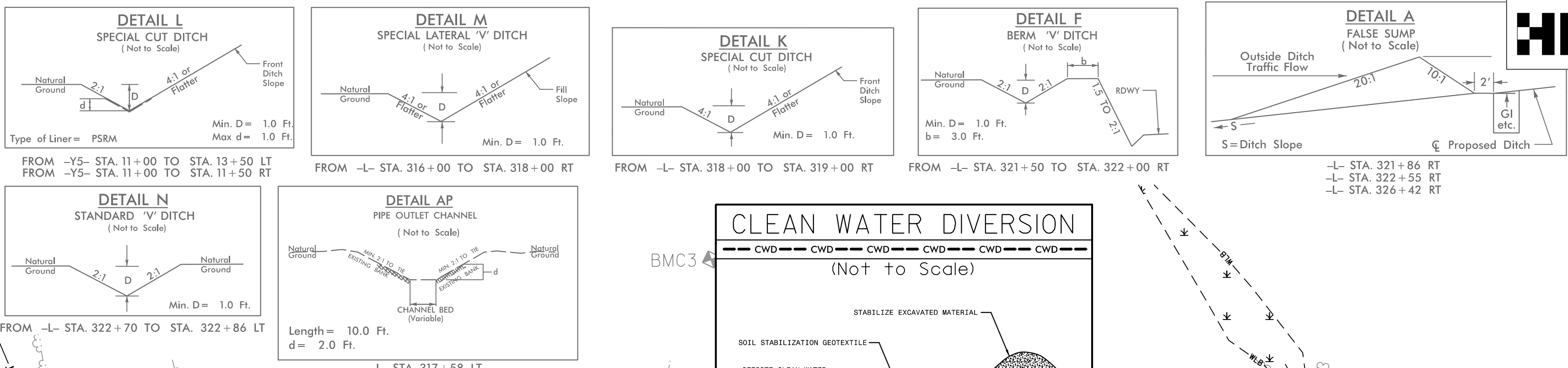


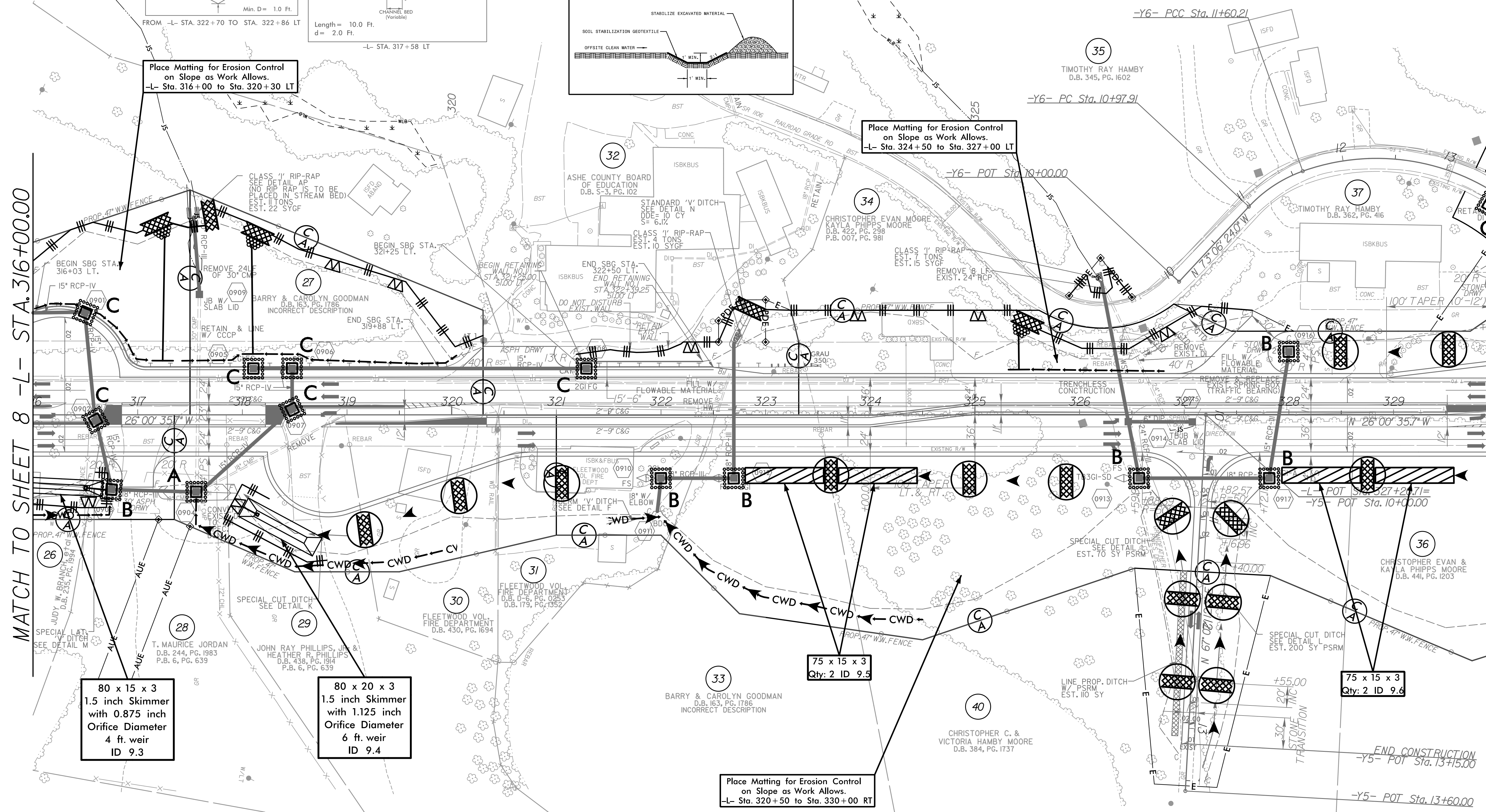
8/17/99

PROJECT REFERENCE NO. <i>R-2915C</i>	SHEET NO. <i>EC-29/CONST.09</i>
RW SHEET NO.	
ROADWAY DESIGN ENGINEER	HYDRAULICS ENGINEER



MATCH TO SHEET 8 -L- STA. 316+00.00

MATCH TO SHEET 10 -L- STA. 330+00.00



80 x 15 x 3
 1.5 inch Skimmer
 with 0.875 inch
 Orifice Diameter
 4 ft. weir
 ID 9.3

80 x 20 x 3
 1.5 inch Skimmer
 with 1.125 inch
 Orifice Diameter
 6 ft. weir
 ID 9.4

75 x 15 x 3
 Qty: 2 ID 9.5

75 x 15 x 3
 Qty: 2 ID 9.6

Place Matting for Erosion Control
 on Slope as Work Allows.
 -L- Sta. 320+50 to Sta. 330+00 RT

INSTALL MATTING FOR
 EROSION CONTROL IN
 PROPOSED DITCH LINES.
 (SEE MATTING SUMMARY)

UTILIZE FABRIC INSERT INLET PROTECTION DEVICE
 IN LIEU OF ROCK INLET SEDIMENT TRAP TYPE 'C'
 TO AVOID IMPOUNDING RUNOFF ON ROADWAY
 OPEN TO PUBLIC AND AS DIRECTED.

REVISIONS

12/4/20 PM
 R-2915C.ec_PSH9.dgn
 \$\$\$\$\$\$