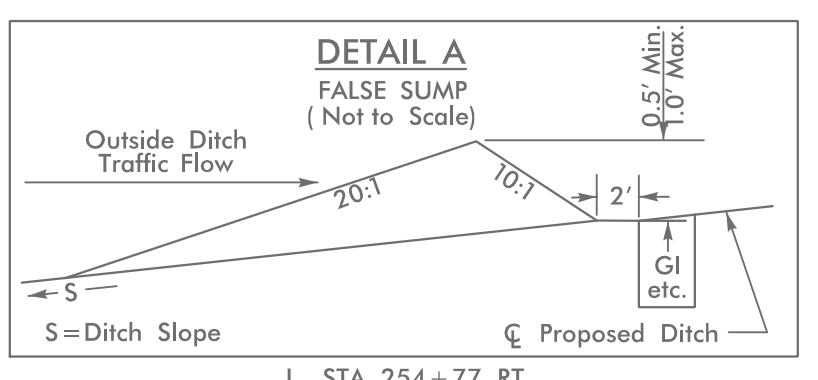


8/17/99

| | |
|-------------------------|---------------------|
| PROJECT REFERENCE NO. | SHEET NO. |
| R-2915C | EC-24/CONST.04 |
| RW SHEET NO. | |
| ROADWAY DESIGN ENGINEER | HYDRAULICS ENGINEER |

INSTALL MATTING FOR EROSION CONTROL IN PROPOSED DITCH LINES. (SEE MATTING SUMMARY)

UTILIZE FABRIC INSERT INLET PROTECTION DEVICE IN LIEU OF ROCK INLET SEDIMENT TRAP TYPE 'C' TO AVOID IMPOUNDING RUNOFF ON ROADWAY OPEN TO PUBLIC AND AS DIRECTED.



END TIP PROJECT R-2915B LB
 -L- POT Sta. 251+72.02
 BEGIN TIP PROJECT R-2915C LA
 -L- POT Sta. 254+36.94

BEGIN CONSTRUCTION R-2915C
 -L- POT Sta. 249+86.19

Place Matting for Erosion Control on Slope as Work Allows.
 -L- Sta. 256+00 to Sta. 258+00 LT

Place Matting for Erosion Control on Slope as Work Allows.
 -L- Sta. 254+50 to Sta. 255+50 LT

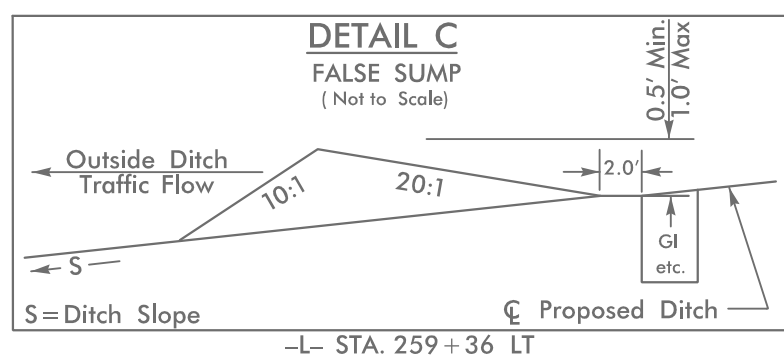
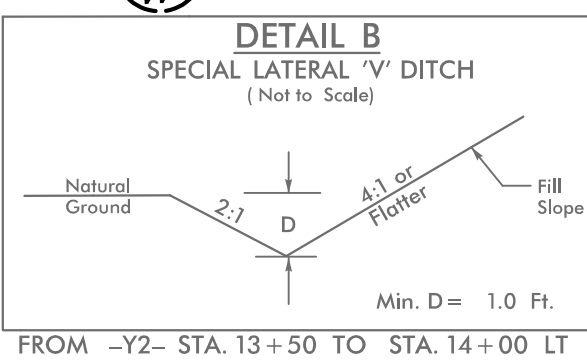
Place Matting for Erosion Control on Slope as Work Allows.
 -L- Sta. 263+00 to Sta. 265+00 LT

50 x 15 x 3
 Qty: 2 ID 4.5

40 x 15 x 3
 Qty: 2 ID 4.3

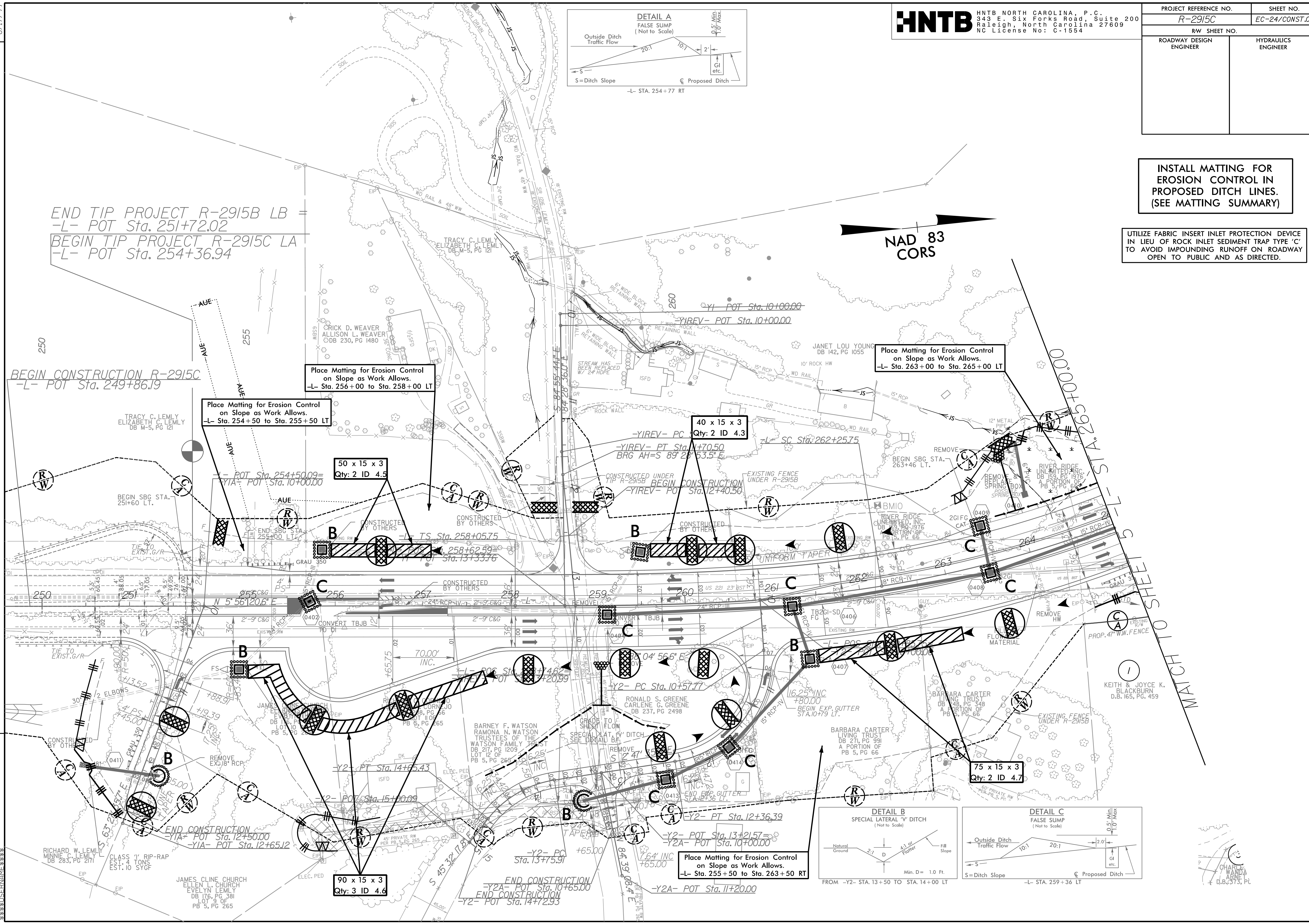
75 x 15 x 3
 Qty: 2 ID 4.7

90 x 15 x 3
 Qty: 3 ID 4.6



REVISIONS

12/25/09 REV. R-2915C.ec_PSH4.dgn
 \$\$\$\$\$\$
 \$\$\$\$\$\$
 \$\$\$\$\$\$



CHANDA
 AGRA, P.E.
 D.B. 165, PG. 459