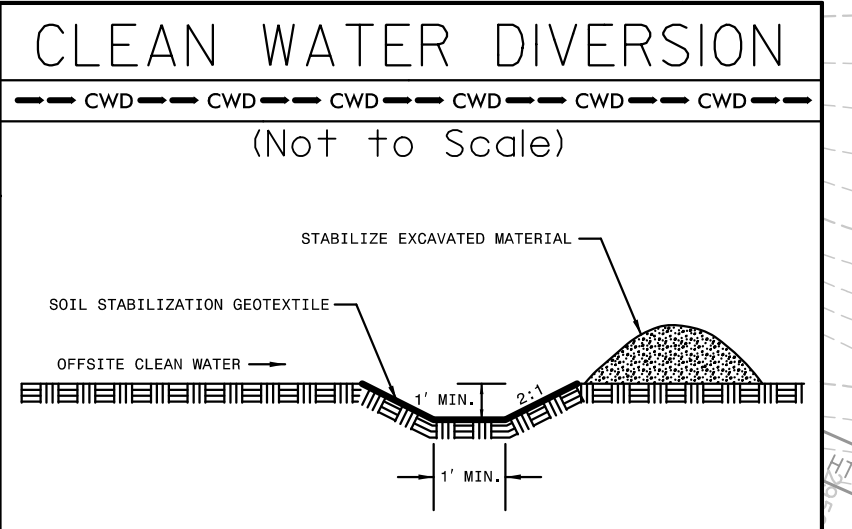
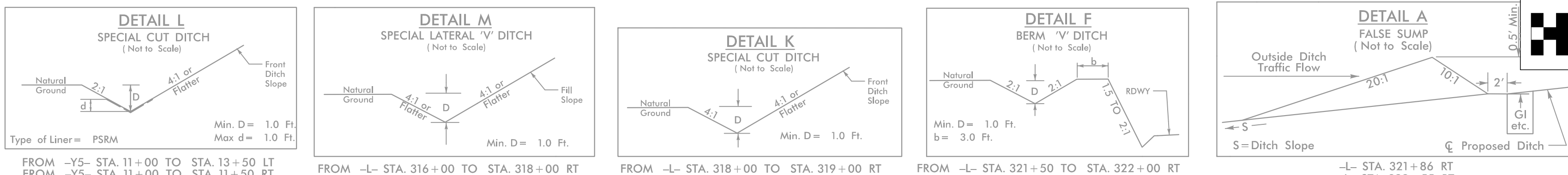


8/17/99

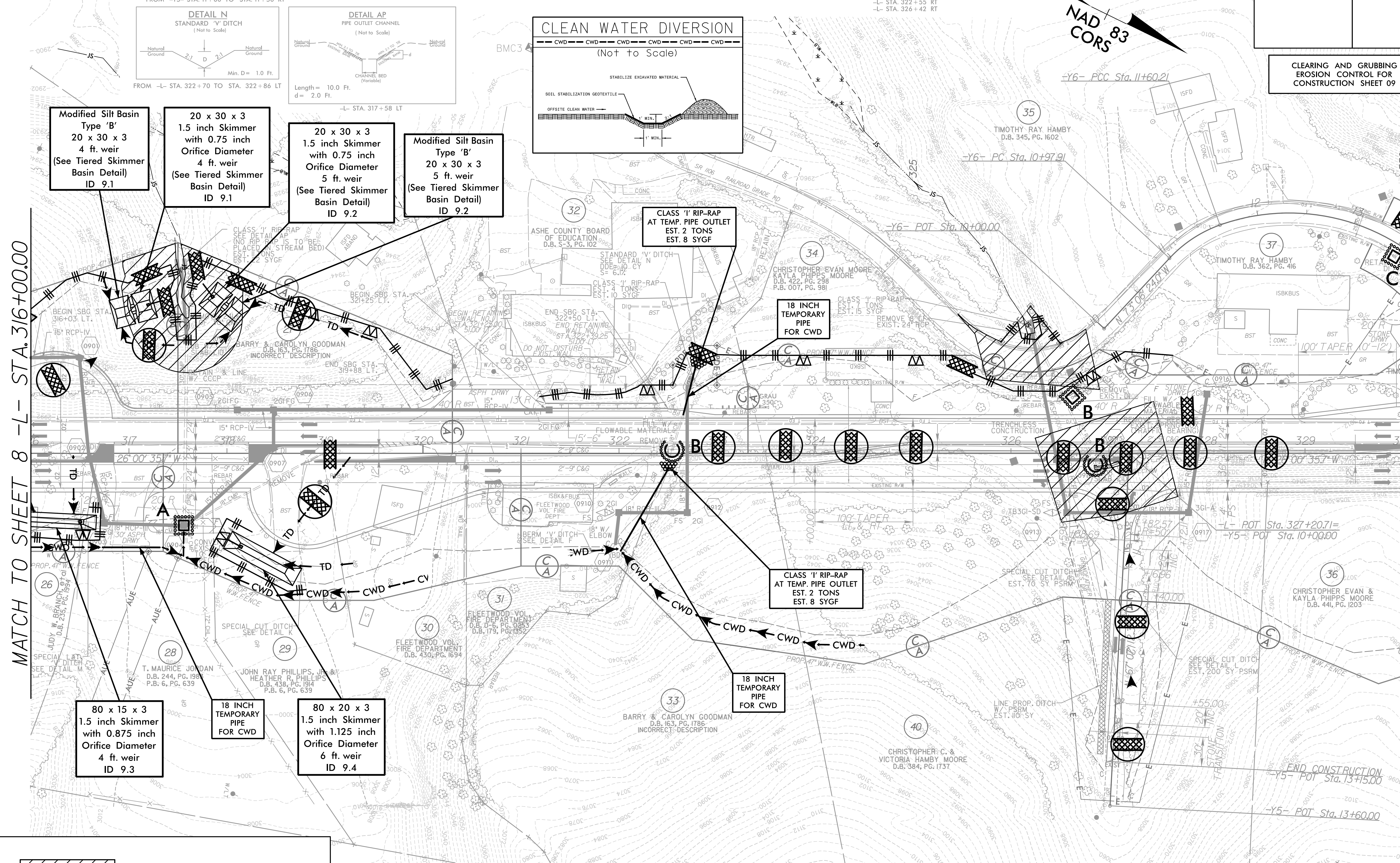
PROJECT REFERENCE NO. <i>R-2915C</i>	SHEET NO. <i>EC-09/CONST.09</i>
RW SHEET NO.	
ROADWAY DESIGN ENGINEER	HYDRAULICS ENGINEER



- Modified Silt Basin Type 'B' 20 x 30 x 3 4 ft. weir (See Tiered Skimmer Basin Detail) ID 9.1
- 20 x 30 x 3 1.5 inch Skimmer with 0.75 inch Orifice Diameter 4 ft. weir (See Tiered Skimmer Basin Detail) ID 9.1
- 20 x 30 x 3 1.5 inch Skimmer with 0.75 inch Orifice Diameter 5 ft. weir (See Tiered Skimmer Basin Detail) ID 9.2
- Modified Silt Basin Type 'B' 20 x 30 x 3 5 ft. weir (See Tiered Skimmer Basin Detail) ID 9.2

MATCH TO SHEET 8 -L- STA. 316+00.00

MATCH TO SHEET 10 -L- STA. 330+00.00



NOTE: PLACE TEMPORARY ROCK SEDIMENT DAMS TYPE - B AND TEMPORARY ROCK SILT CHECKS TYPE - A AT DRAINAGE OUTLETS.

INSTALL PIPE(S) IN JURISDICTIONAL AREAS WITHOUT IMPACTING STREAM UNTIL AREA STABILIZED AND ACCORDING TO NCDOT BEST MANAGEMENT PRACTICES FOR CONSTRUCTION AND MAINTENANCE ACTIVITIES MANUAL.

REVISIONS

9:39:23 AM
 R-2915C_cg_PSH9.dgn
 USER:R-2915C