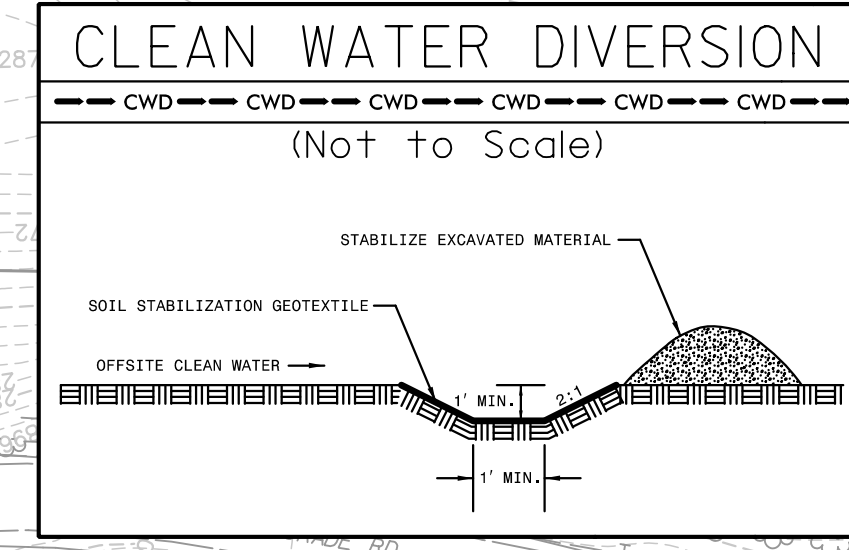
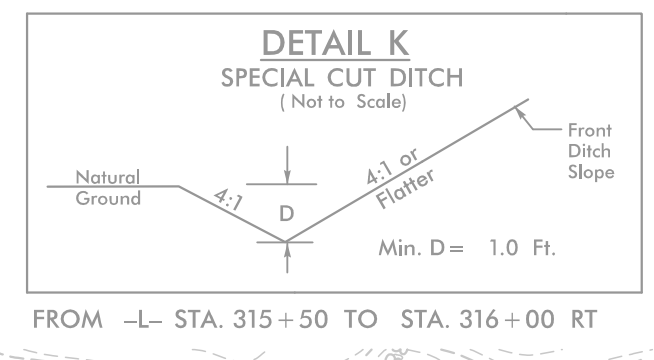
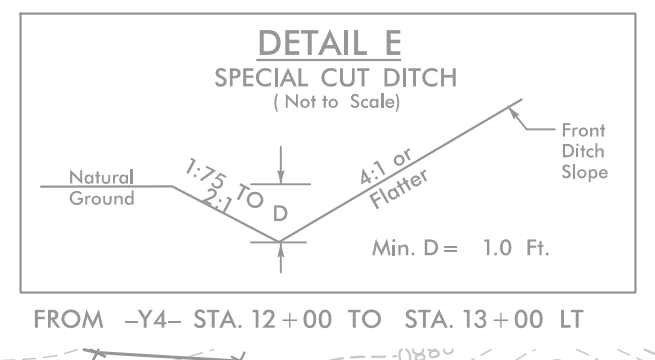
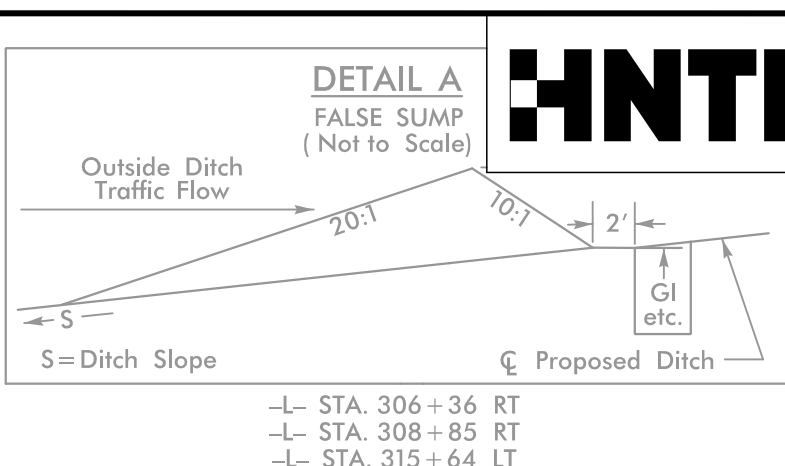
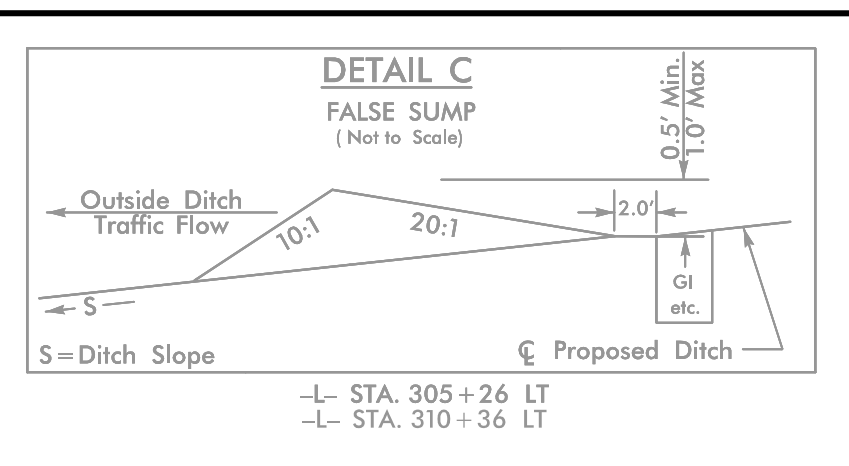
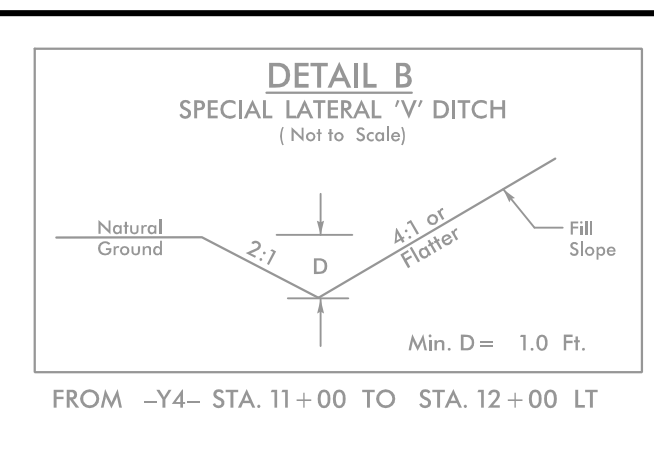
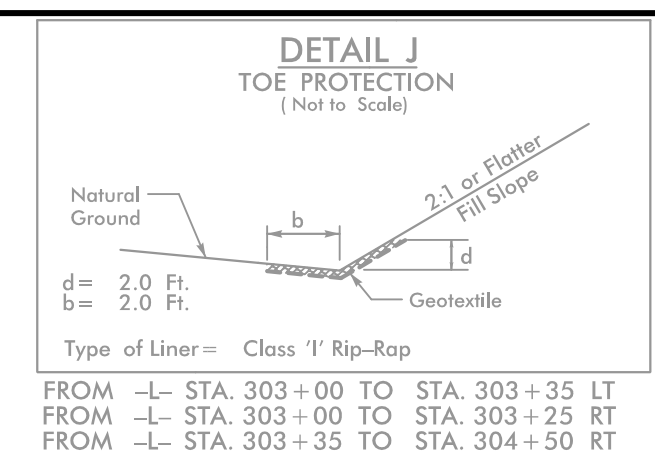


8/17/99

PROJECT REFERENCE NO. R-2915C	SHEET NO. EC-08/CONST.08
RW SHEET NO.	
ROADWAY DESIGN ENGINEER	HYDRAULICS ENGINEER

NOTE:
 PLACE TEMPORARY ROCK SEDIMENT DAMS TYPE - B AND TEMPORARY ROCK SILT CHECKS TYPE - A AT DRAINAGE OUTLETS.

 ENVIRONMENTALLY SENSITIVE AREA
 SEE PROJECT SPECIAL PROVISIONS



CLEARING AND GRUBBING
 EROSION CONTROL FOR
 CONSTRUCTION SHEET 08

NAD COR 83

REVISIONS

MATCH TO SHEET 7 -L- STA. 303+00.00

MATCH TO SHEET 9 -L- STA. 316+00.00

80 x 40 x 3
 2 inch Skimmer
 with 1.625 inch
 Orifice Diameter
 11 ft. weir
 ID 8.1

CLASS 1' RIP-RAP
 AT TEMP. PIPE OUTLET
 EST. 4 TONS
 EST. 12 SYGF

40 x 20 x 3
 1.5 inch Skimmer
 with 0.75 inch
 Orifice Diameter
 4 ft. weir
 ID 8.2

24 INCH
 TEMPORARY
 PIPE
 FOR CWD

45 x 25 x 3
 1.5 inch Skimmer
 with 1.25 inch
 Orifice Diameter
 9 ft. weir
 (See Tiered Skimmer
 Basin Detail)
 ID 8.3

Modified Silt Basin
 Type 'B'
 45 x 25 x 3
 9 ft. weir
 (See Tiered Skimmer
 Basin Detail)
 ID 8.3

80 x 15 x 3
 1.5 inch Skimmer
 with 0.875 inch
 Orifice Diameter
 4 ft. weir
 ID 9.3

INSTALL PIPE(S) IN JURISDICTIONAL AREAS WITHOUT IMPACTING STREAM UNTIL AREA STABILIZED AND ACCORDING TO NCDOT BEST MANAGEMENT PRACTICES FOR CONSTRUCTION AND MAINTENANCE ACTIVITIES MANUAL.

9:37:45 AM
 R-2915C_cg_PSH8.dgn
 \$\$\$\$\$\$