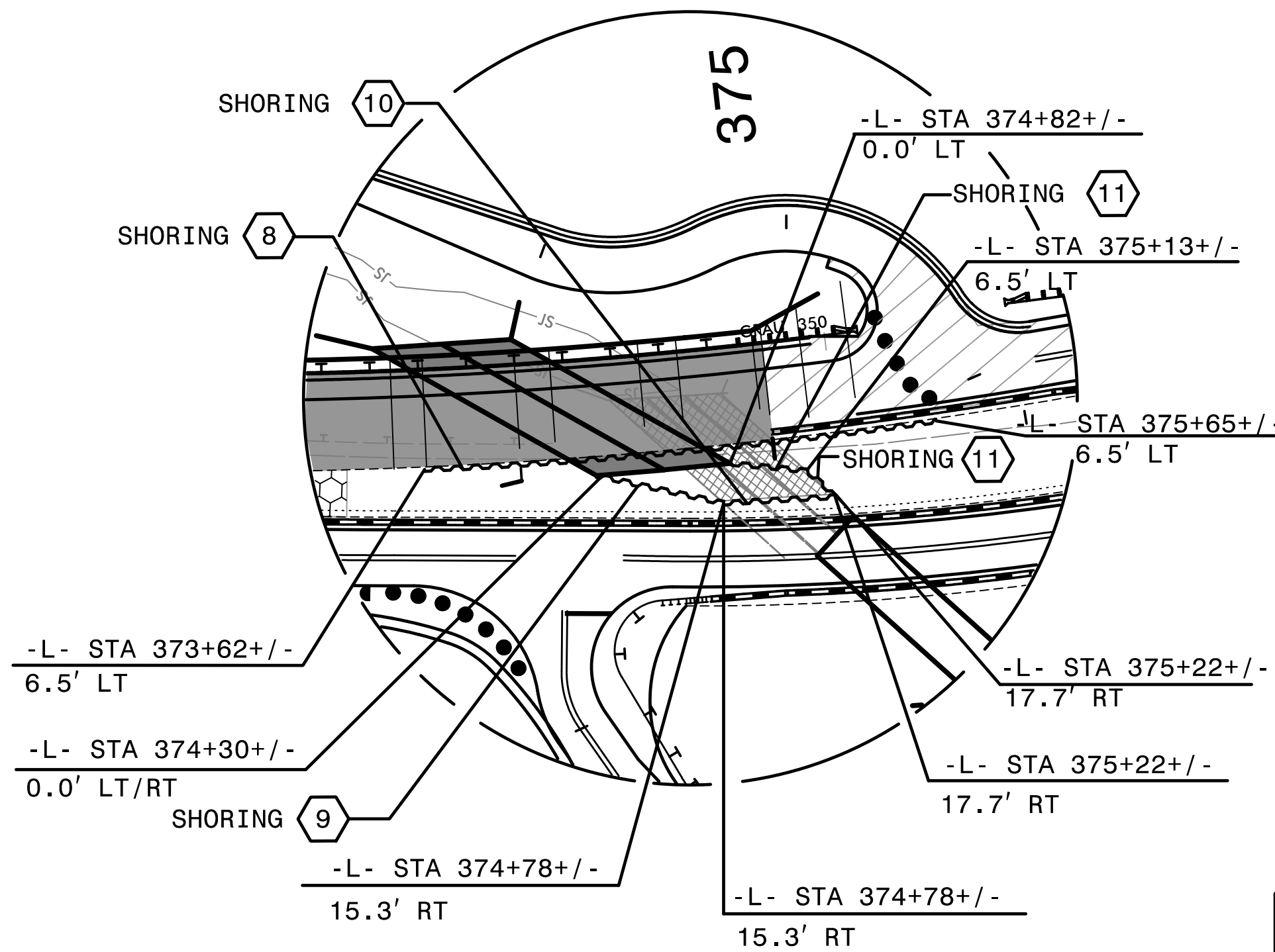
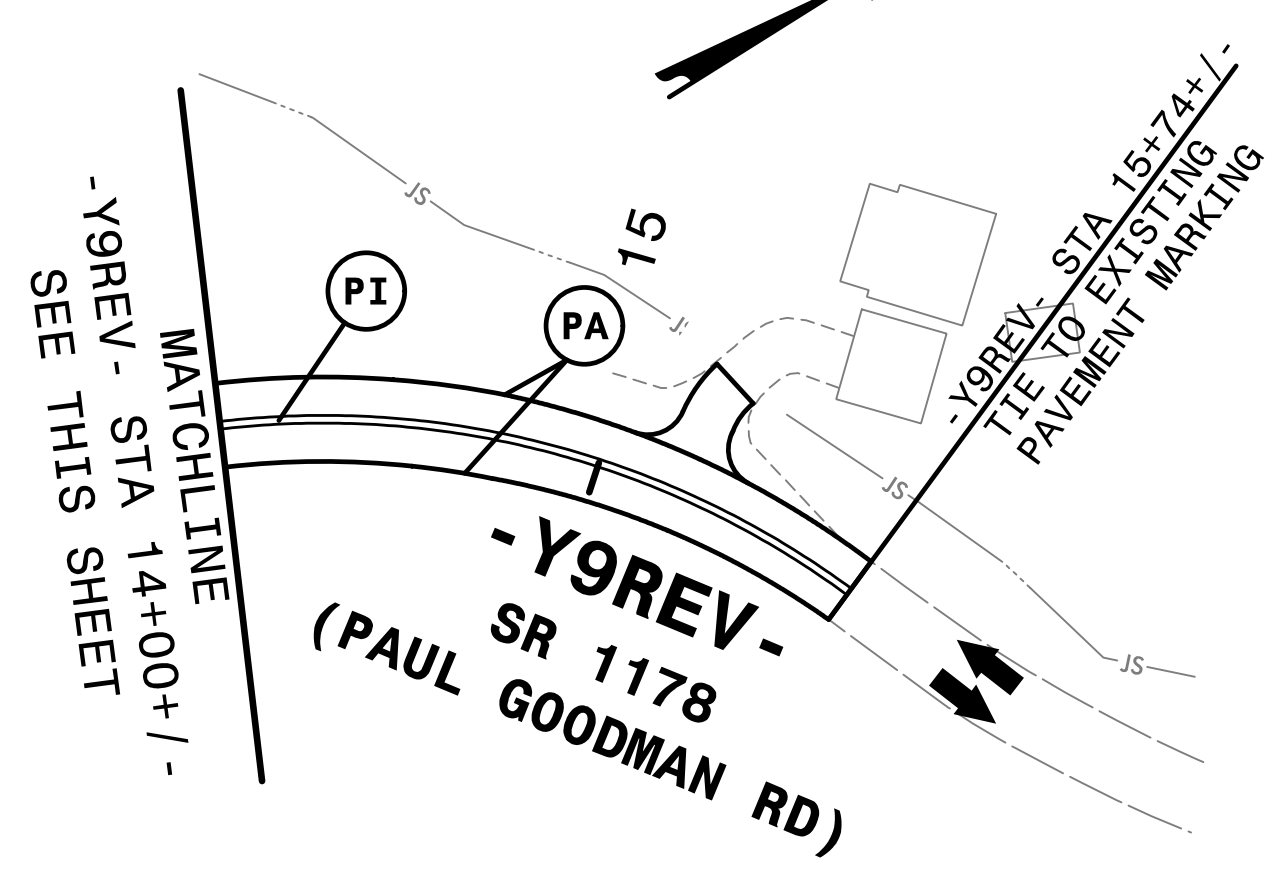


PLACE PCB WITH CRASH CUSHION FROM -L- STA 370+86+/- TO -L- STA 378+68+/-

TEMPORARY GUARDRAIL W/ SHOP CURVED GR, TYPE B-77 ANCHOR AND AT-1

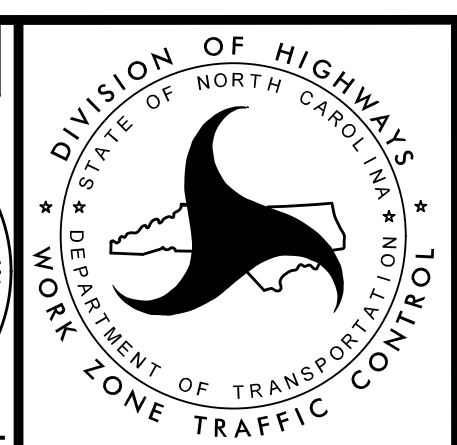
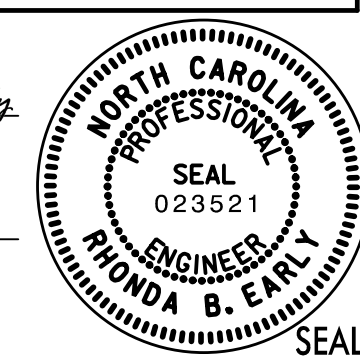
PLACE PCB WITH CRASH CUSHION FROM -L- STA 374+71+/- TO -L- STA 380+18+/-



- 8** EST QUANTITY = 3,720 SF  
 TEMPORARY SHORING FROM -L- STA 373+62+/-, 6.5' LT TO -L- STA 375+65+/-, 6.5' LT  
 (SEE SHEET TMP-2H FOR TEMPORARY SHORING NOTES)
- 9** EST QUANTITY = 1,152 SF  
 TEMPORARY SHORING FROM -L- STA 374+30+/-, 0.0' LT/RT TO -L- STA 374+78+/-, 15.3' RT  
 (SEE SHEET TMP-2H FOR TEMPORARY SHORING NOTES)
- 10** EST QUANTITY = 1,056 SF  
 TEMPORARY SHORING FROM -L- STA 374+78+/-, 15.3' RT TO -L- STA 375+22+/-, 17.7' RT  
 (SEE SHEET TMP-2H FOR TEMPORARY SHORING NOTES)
- 11** EST QUANTITY = 946 SF  
 TEMPORARY SHORING FROM -L- STA 374+82+/-, 0.0' LT/RT TO -L- STA 375+13+/-, 6.5' RT TO -L- STA 375+22+/-, 17.7' RT  
 (SEE SHEET TMP-2I FOR TEMPORARY SHORING NOTES)

REFER TO SHEETS TMP-42 & TMP-42A FOR CUT SECTION(S).

DOCUMENT NOT CONSIDERED FINAL UNLESS ALL SIGNATURES COMPLETED  
 APPROVED BY: Rhonda B. Early  
 F34CAFACBBF48A  
 DATE: 8/18/2016



TRANSPORTATION MANAGEMENT PLAN  
 PHASE II  
 DETAIL

