

5/14/99

-L-

BMC2 ELEVATION = 2973.57
-L- STATION 300+70 151' RIGHT
8" SPIKE IN ROOT OF 15" WHITE PINE

LOCHNER
H. W. LOCHNER, INC.
2840 PLAZA PLACE, SUITE 202
RALEIGH, NC 27612
(919)571-7111
NC License Number F-0159

HNTB
343 E. SIX FORKS ROAD, SUITE 200
RALEIGH, NC 27609
NC License Number C-1554
9/3/2016

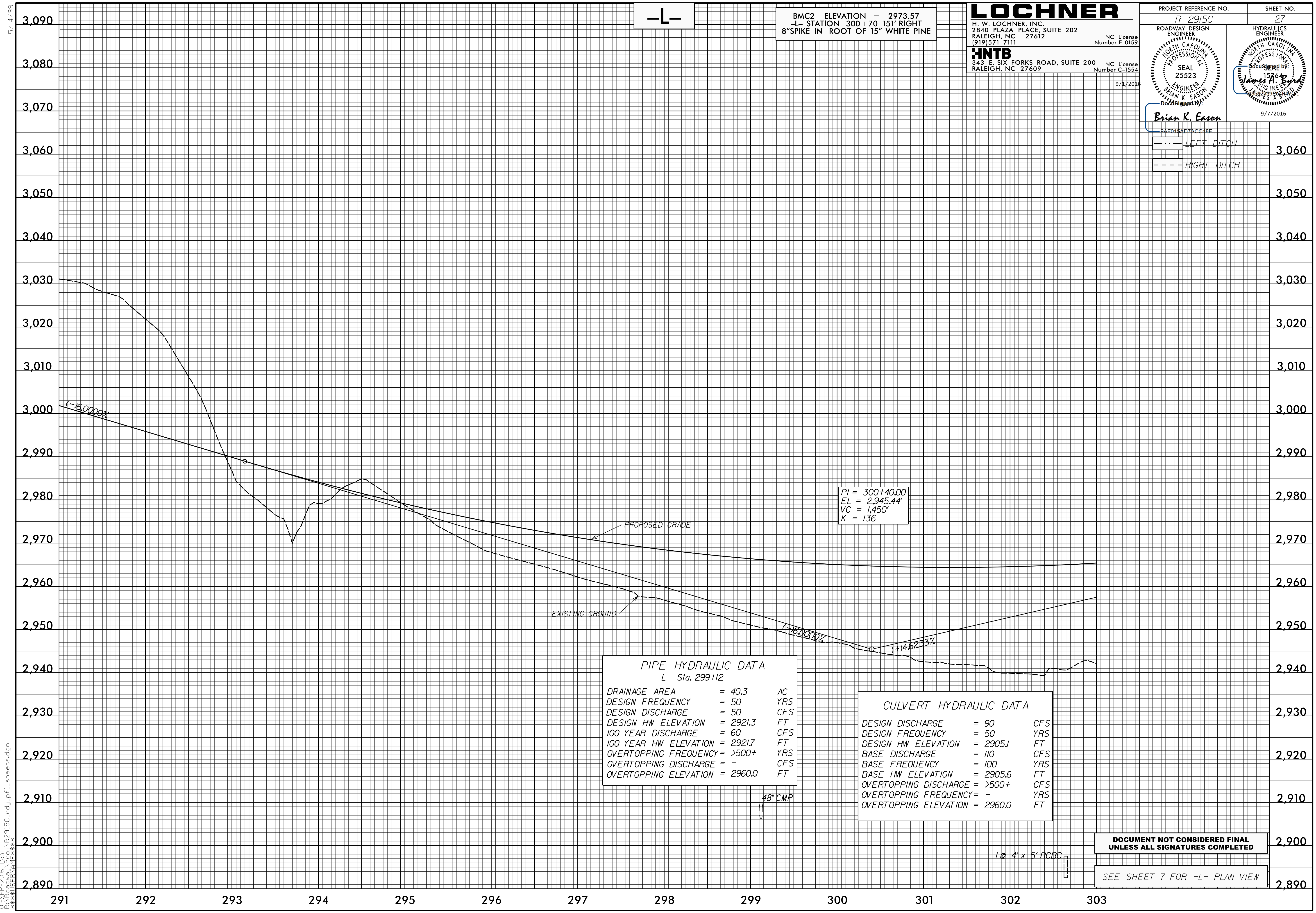
PROJECT REFERENCE NO. *R-2915C* SHEET NO. *27*

ROADWAY DESIGN ENGINEER
HYDRAULICS ENGINEER

SEAL 25523
ENGINEER
BRIAN K. EASON
DocuSigned by:
Brian K. Eason
9/7/2016

9AF015AFD7ACC48F

--- LEFT DITCH
--- RIGHT DITCH



PI = 300+40.00
EL = 2,945.44'
VC = 1,450'
K = 136

PIPE HYDRAULIC DATA
-L- Sta. 299+12

DRAINAGE AREA	= 40.3	AC
DESIGN FREQUENCY	= 50	YRS
DESIGN DISCHARGE	= 50	CFS
DESIGN HW ELEVATION	= 2921.3	FT
100 YEAR DISCHARGE	= 60	CFS
100 YEAR HW ELEVATION	= 2921.7	FT
OVERTOPPING FREQUENCY	= >500+	YRS
OVERTOPPING DISCHARGE	= -	CFS
OVERTOPPING ELEVATION	= 2960.0	FT

CULVERT HYDRAULIC DATA

DESIGN DISCHARGE	= 90	CFS
DESIGN FREQUENCY	= 50	YRS
DESIGN HW ELEVATION	= 2905J	FT
BASE DISCHARGE	= 110	CFS
BASE FREQUENCY	= 100	YRS
BASE HW ELEVATION	= 2905.6	FT
OVERTOPPING DISCHARGE	= >500+	CFS
OVERTOPPING FREQUENCY	= -	YRS
OVERTOPPING ELEVATION	= 2960.0	FT

DOCUMENT NOT CONSIDERED FINAL
UNLESS ALL SIGNATURES COMPLETED

SEE SHEET 7 FOR -L- PLAN VIEW

1 @ 4' x 5' RCBC

01-SEP-2016 13:31
R:\Roadway\Projects\2915C\rdy\pl\sheets.dgn