

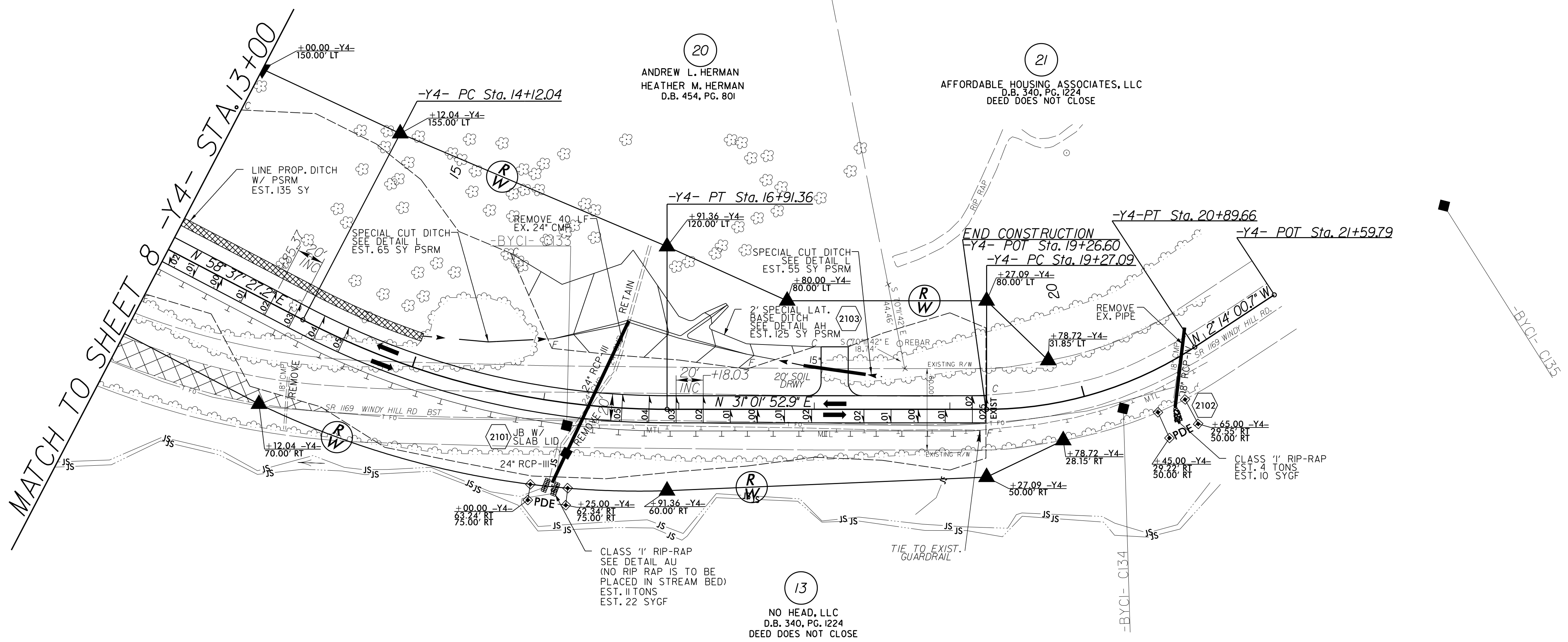
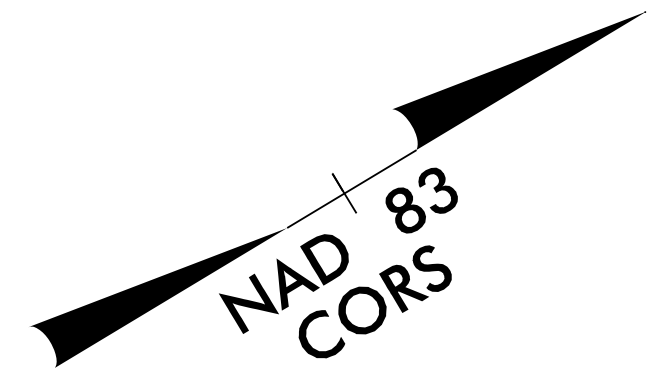


LOCHNER
 H. W. LOCHNER, INC.
 2840 PLAZA PLACE, SUITE 202
 RALEIGH, NC 27612
 (919)571-7111
 NC License Number F-0159

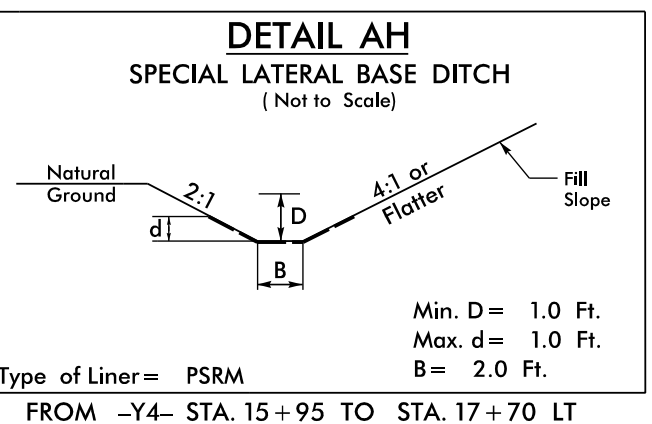
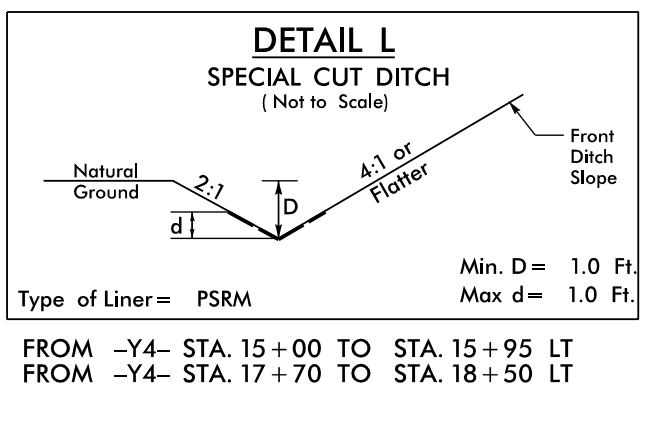
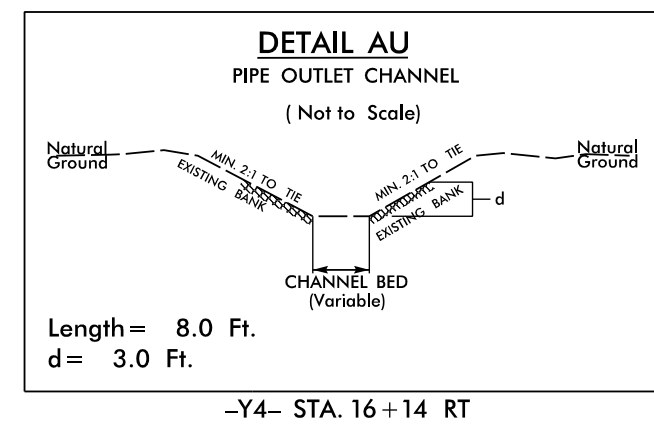
HNTB
 343 E. SIX FORKS ROAD, SUITE 200
 RALEIGH, NC 27609
 NC License Number C-1554

PROJECT REFERENCE NO. <i>R-2915C</i>	SHEET NO. <i>21</i>
ROADWAY DESIGN ENGINEER 9/1/2016	HYDRAULICS ENGINEER
 James A. Boyd 9/7/2016	 Brian W. Eason 9/7/2016

DOCUMENT NOT CONSIDERED FINAL UNLESS ALL SIGNATURES COMPLETED



REVISIONS



-Y4-
 PI Sta 15+54.47
 $\Delta = 27' 35'' 34.3'' (LT)$
 $D = 9' 52'' 42.9''$
 $L = 279.32'$
 $T = 142.42'$
 $R = 580.00'$
 $SE = .05$
 $Ro = 100.00'$

-Y4-
 PI Sta 20+10.74
 $\Delta = 33' 15'' 53.7'' (LT)$
 $D = 20' 27'' 46.0''$
 $L = 162.56'$
 $T = 83.64'$
 $R = 280.00'$
 $SE = EXIST.$
 $Ro = As Shown$

DRIVEWAY TURNOUTS ARE 10' RADII UNLESS SHOWN OTHERWISE.
 SEE SHEET 36 FOR -Y4- PROFILE

22-AUG-2016 16:52
 R:\Roadway\Projects\2915C_rdy_PSH21.dgn
 \$\$\$\$