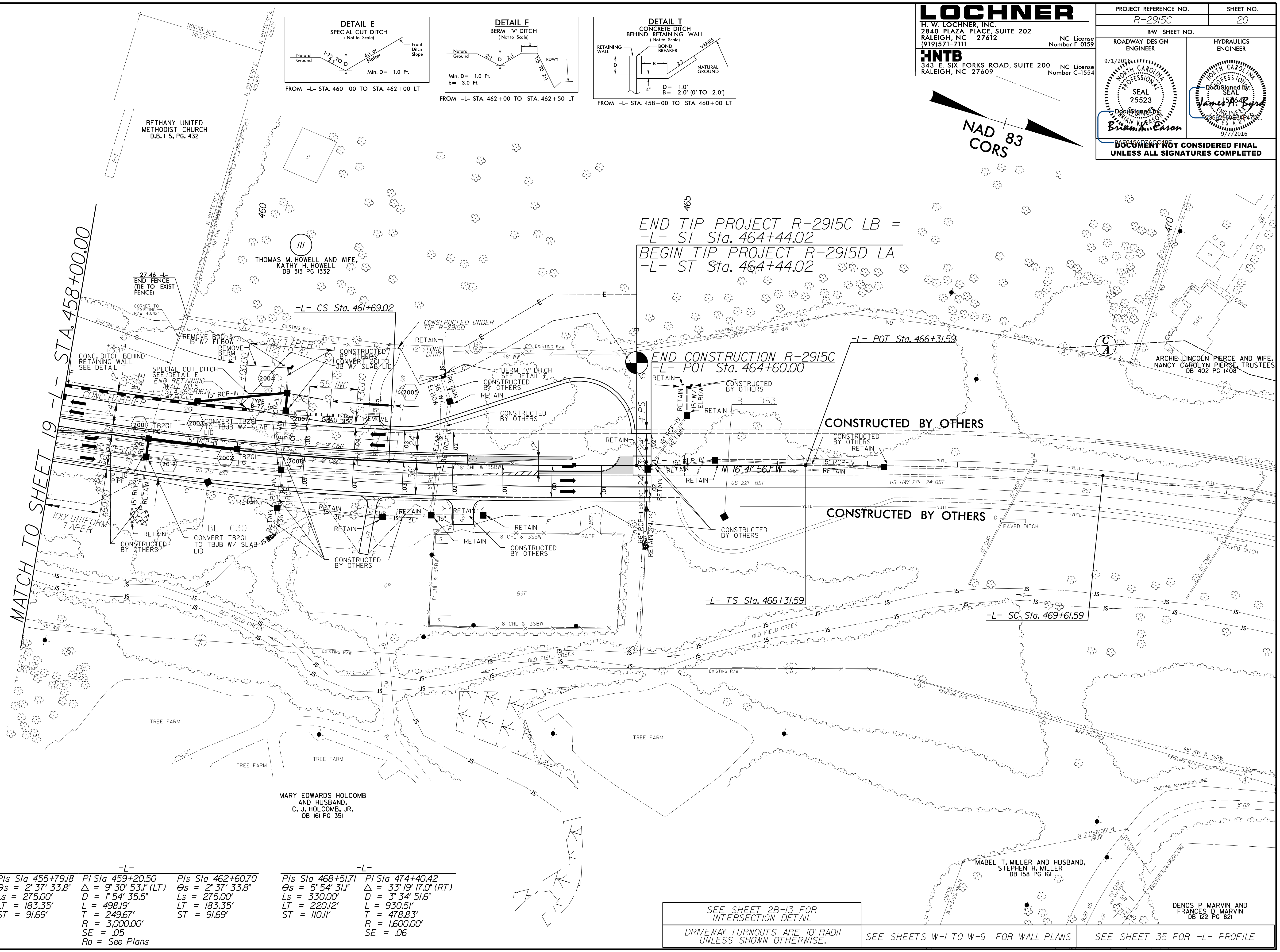
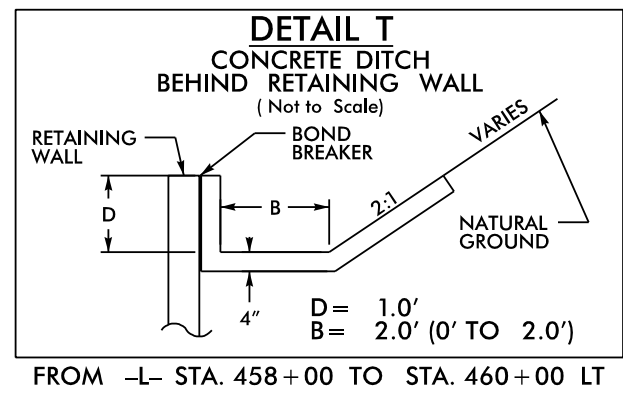
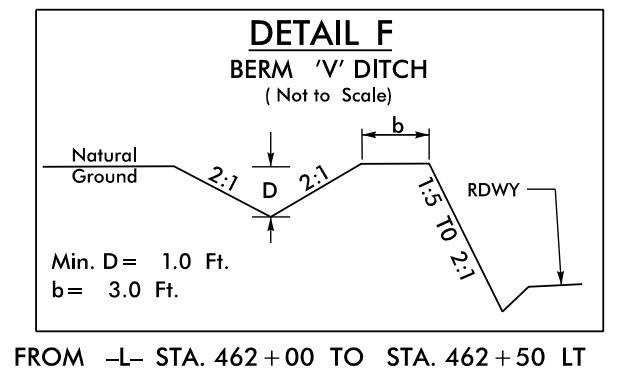
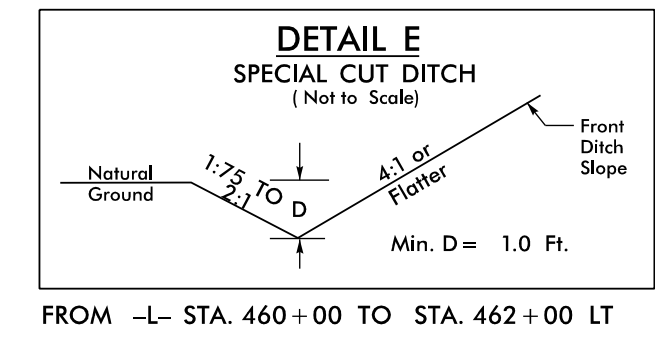


8/17/99

LOCHNER
 H. W. LOCHNER, INC.
 2840 PLAZA PLACE, SUITE 202
 RALEIGH, NC 27612
 (919)571-7111
 NC License Number F-0159

HNTB
 343 E. SIX FORKS ROAD, SUITE 200
 RALEIGH, NC 27609
 NC License Number C-1554

PROJECT REFERENCE NO. R-2915C	SHEET NO. 20
RW SHEET NO.	HYDRAULICS ENGINEER
ROADWAY DESIGN ENGINEER	DESIGNED BY James A. Byrd Professional Engineer No. 25523 9/7/2016
9/1/2016 NORTH CAROLINA PROFESSIONAL SEAL 25523 Designated by Brian K. Eason Professional Engineer No. 25523 9/7/2016	
DOCUMENT NOT CONSIDERED FINAL UNLESS ALL SIGNATURES COMPLETED	



REVISIONS

-L- PIs Sta 455+79.8 $\Theta_s = 2^\circ 37' 33.8''$ Ls = 275.00' LT = 183.35' ST = 91.69'	-L- PI Sta 459+20.50 $\Delta = 9^\circ 30' 53.1''$ (LT) D = 1' 54' 35.5" L = 498.19' T = 249.67' R = 3,000.00' SE = .05 Ro = See Plans	-L- PIs Sta 462+60.70 $\Theta_s = 2^\circ 37' 33.8''$ Ls = 275.00' LT = 183.35' ST = 91.69'	-L- PIs Sta 468+51.71 $\Theta_s = 5^\circ 54' 31.1''$ Ls = 330.00' LT = 220.12' ST = 110.11'	-L- PI Sta 474+40.42 $\Delta = 33^\circ 19' 17.0''$ (RT) D = 3' 34' 51.6" L = 930.51' T = 478.83' R = 1,600.00' SE = .06
---	--	--	---	---

SEE SHEET 2B-13 FOR
 INTERSECTION DETAIL
 DRIVEWAY TURNOUTS ARE 10' RADII
 UNLESS SHOWN OTHERWISE.

SEE SHEETS W-1 TO W-9 FOR WALL PLANS

SEE SHEET 35 FOR -L- PROFILE

22-AUG-2016 16:52
 R:\Roadway\2015\2915C_rdy_PSH20.dgn
 \$\$\$\$