

8/17/99

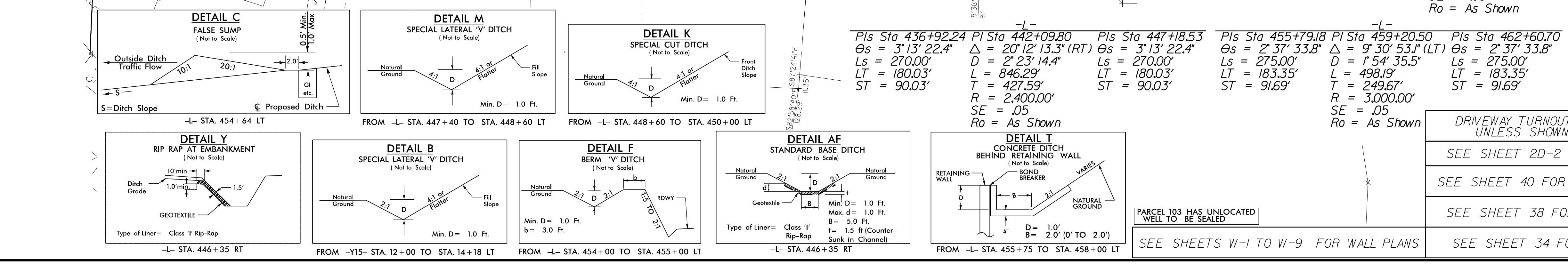
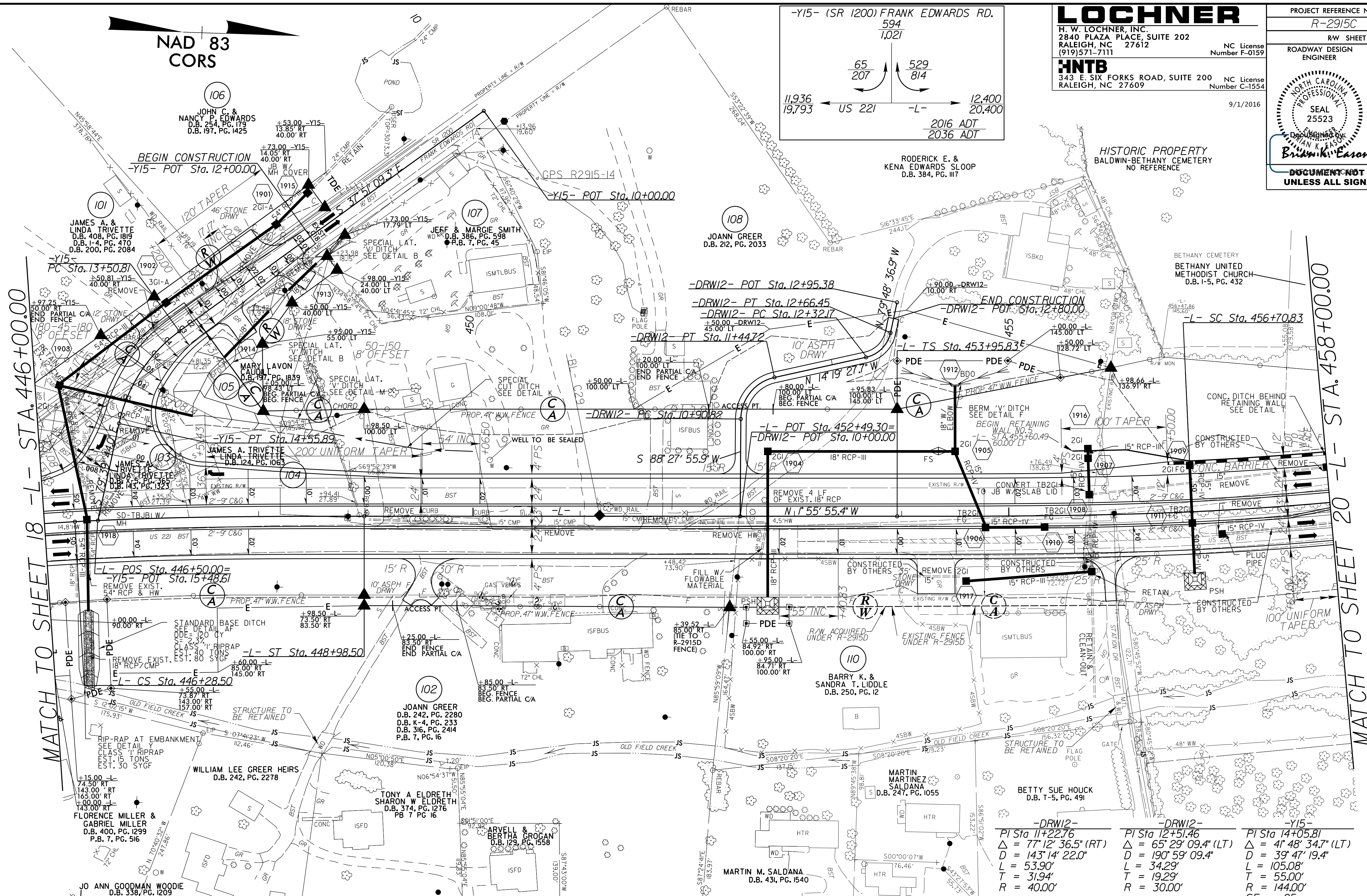
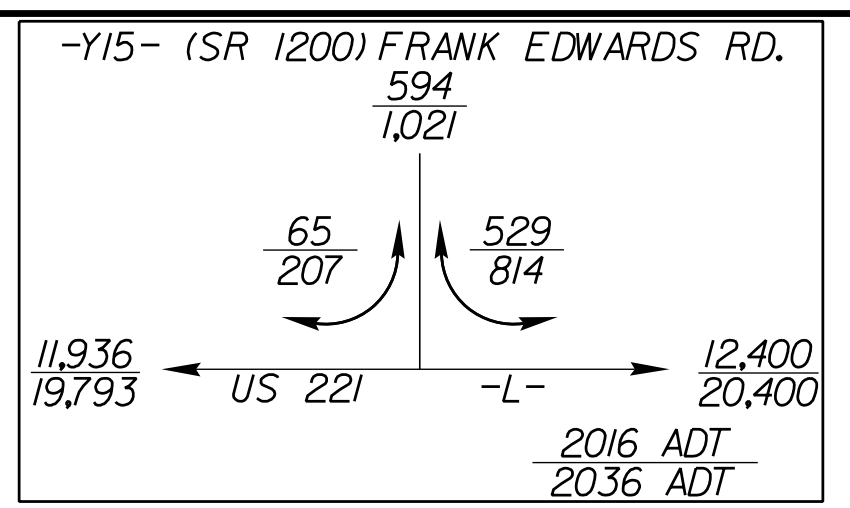
NAD 83  
CORS

**LOCHNER**  
 H. W. LOCHNER, INC.  
 2840 PLAZA PLACE, SUITE 202  
 RALEIGH, NC 27612  
 (919)571-7111  
 NC License Number F-0159

**HNTB**  
 343 E. SIX FORKS ROAD, SUITE 200  
 RALEIGH, NC 27609  
 NC License Number C-1554

9/1/2016

|  |                     |
|--|---------------------|
| PROJECT REFERENCE NO.<br>R-2915C                                 | SHEET NO.<br>19     |
| ROADWAY DESIGN ENGINEER  | HYDRAULICS ENGINEER |
|  |                     |
| DOCUMENT NOT CONSIDERED FINAL<br>UNLESS ALL SIGNATURES COMPLETED |                     |



|  |   |   |   |  |   |
|--|---|---|---|--|---|
| $Pis Sta 436+92.24$<br>$\Delta s = 3' 13.22"$<br>$Ls = 270.00'$<br>$LT = 180.03'$<br>$ST = 90.03'$ | $Pis Sta 442+09.80$<br>$\Delta = 20' 12' 13.3" (RT)$<br>$D = 2' 23' 14.4"$<br>$Ls = 270.00'$<br>$LT = 180.03'$<br>$ST = 90.03'$ | $Pis Sta 447+18.53$<br>$\Delta s = 3' 13' 22.4"$<br>$Ls = 270.00'$<br>$LT = 180.03'$<br>$ST = 90.03'$ | $Pis Sta 455+79.18$<br>$\Delta s = 2' 37' 33.8"$<br>$Ls = 275.00'$<br>$LT = 183.35'$<br>$ST = 91.69'$ | $Pis Sta 459+20.50$<br>$\Delta = 9' 30' 53.1" (LT)$<br>$D = 1' 54' 35.5"$<br>$Ls = 275.00'$<br>$LT = 183.35'$<br>$ST = 91.69'$ | $Pis Sta 462+60.70$<br>$\Delta s = 2' 37' 33.8"$<br>$Ls = 275.00'$<br>$LT = 183.35'$<br>$ST = 91.69'$ |
|--|---|---|---|--|---|

PARCEL 103 HAS UNLOCATED WELL TO BE SEALED

SEE SHEETS W-1 TO W-9 FOR WALL PLANS

DRIVEWAY TURNOUTS ARE 10' RADII UNLESS SHOWN OTHERWISE.

SEE SHEET 2D-2 FOR PSH DETAIL

SEE SHEET 40 FOR -DRW12- PROFILE

SEE SHEET 38 FOR -Y15- PROFILE

SEE SHEET 34 FOR -L- PROFILE

REVISIONS

29-AUG-2016 14:40  
 R:\Roadway\2016\2915C\_rdy\_PSH19.dgn  
 11:33 AM