

8/17/19

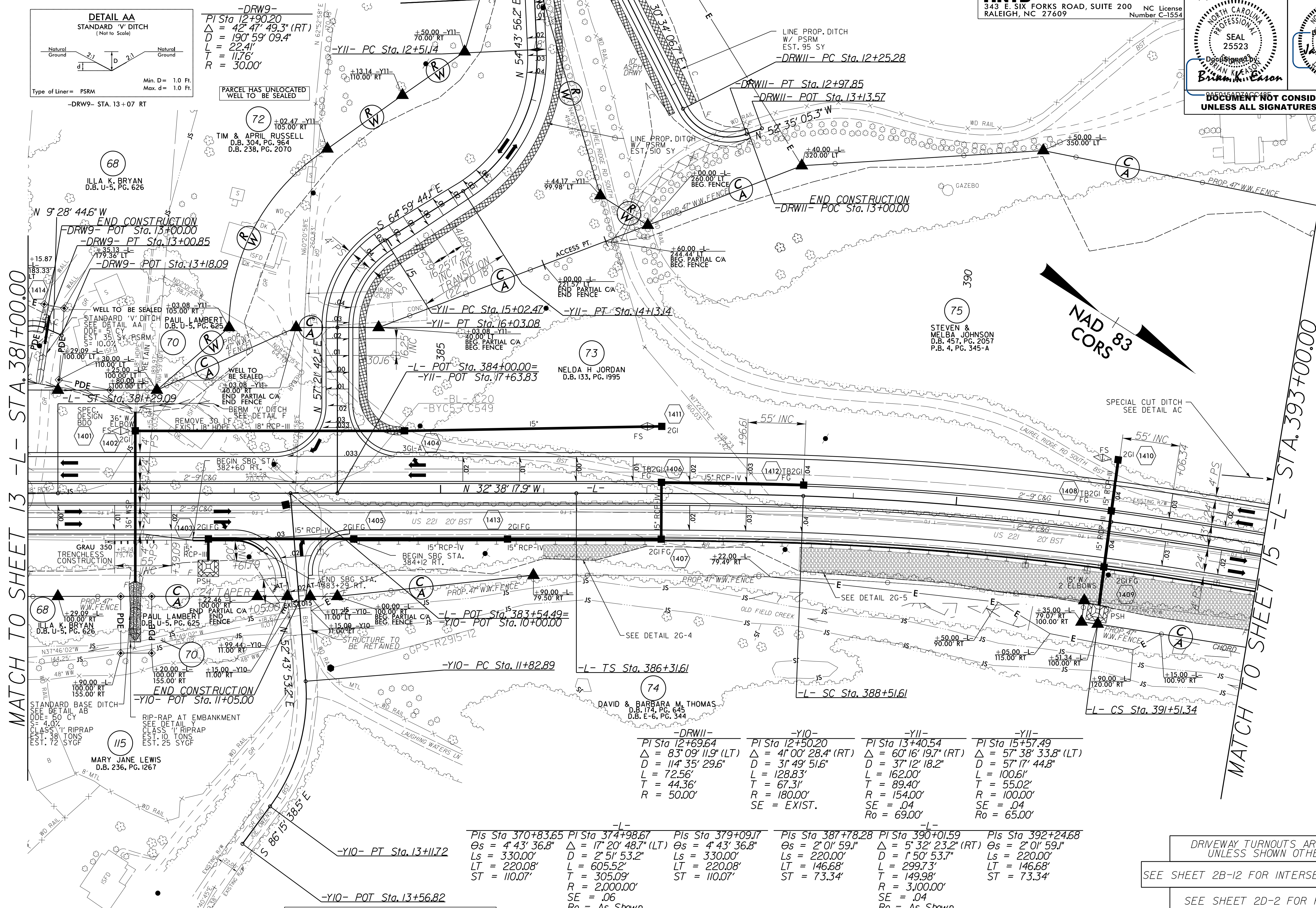
LOCHNER
 H. W. LOCHNER, INC.
 2840 PLAZA PLACE, SUITE 202
 RALEIGH, NC 27612
 (919)571-7111

NC License Number F-0159
 NC License Number C-1554

HNTB
 343 E. SIX FORKS ROAD, SUITE 200
 RALEIGH, NC 27609

PROJECT REFERENCE NO. R-2915C	SHEET NO. 14
ROADWAY DESIGN ENGINEER 9/1/2016	HYDRAULICS ENGINEER
SEAL 25523 9/1/2016 Designed by: <i>Brian Eason</i>	SEAL 25523 9/7/2016 Designed by: <i>James P. Bird</i>
DOCUMENT NOT CONSIDERED FINAL UNLESS ALL SIGNATURES COMPLETED	

MATCH TO SHEET 22
-YII- STA. 12+00.00



MATCH TO SHEET 13 -L- STA. 381+00.00

MATCH TO SHEET 15 -L- STA. 393+00.00

REVISIONS

31-AUG-2016 16:31
R:\Roadway\PC\N2915C\rdy_PSH14.dgn
8/17/19

DRIVEWAY TURNOUTS ARE 10' RADII UNLESS SHOWN OTHERWISE.

SEE SHEET 2B-12 FOR INTERSECTION DETAIL

SEE SHEET 2D-2 FOR PSH DETAIL

SEE SHEET 40 FOR -DRWII- PROFILE

SEE SHEET 37 FOR -YI0- PROFILE

SEE SHEET 38 FOR -YII- PROFILE

SEE SHEET 31 FOR -L- PROFILE