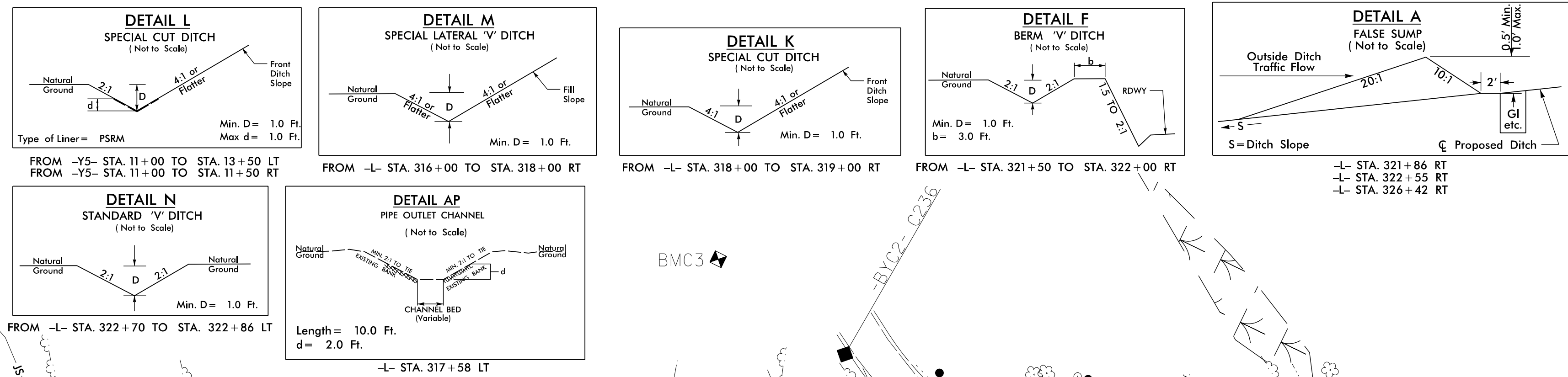


8/17/99



LOCHNER
H. W. LOCHNER, INC.
2840 PLAZA PLACE, SUITE 202
RALEIGH, NC 27612
(919)571-7111
NC License Number F-0159

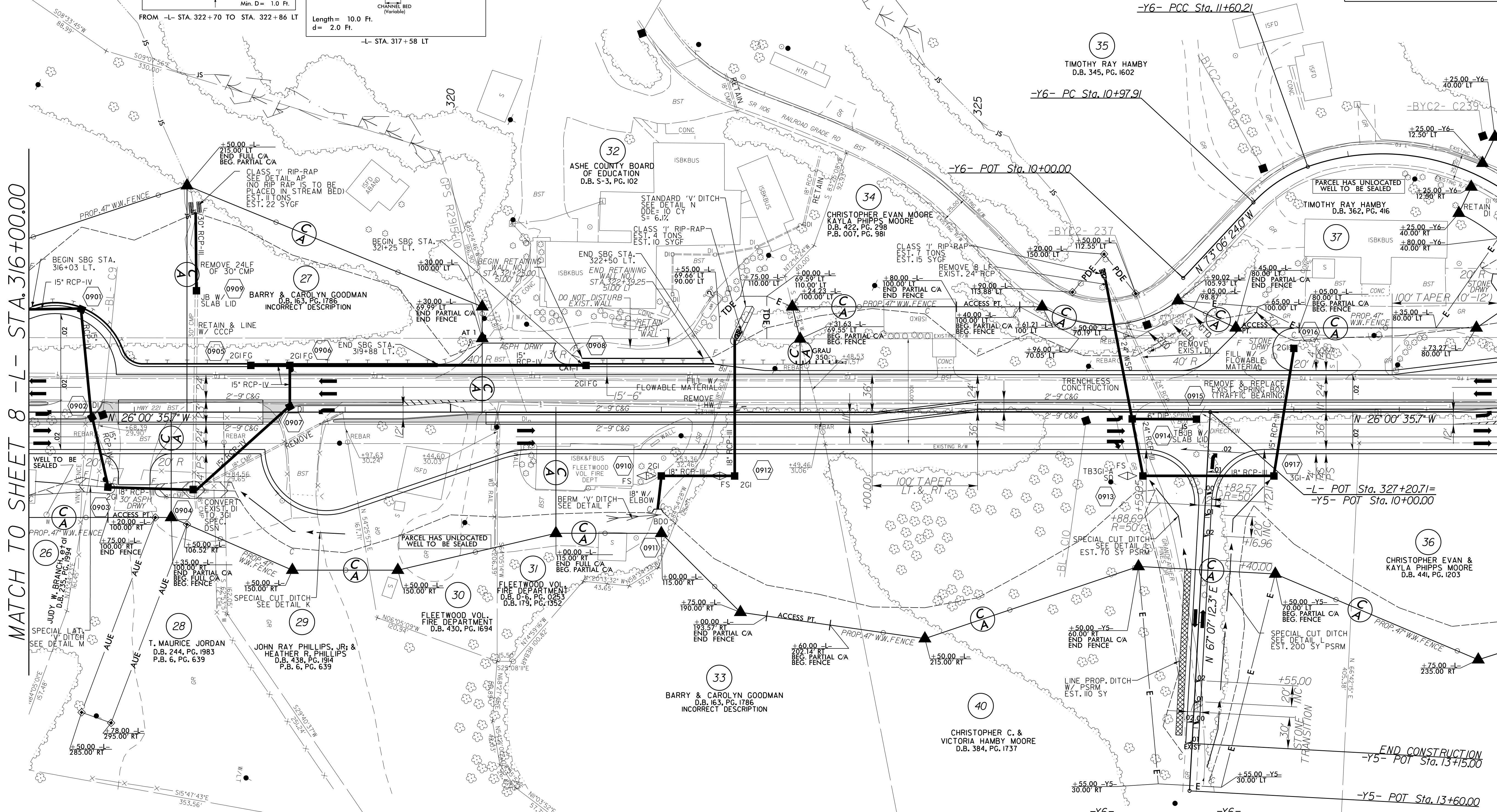
HNTB
343 E. SIX FORKS ROAD, SUITE 200
RALEIGH, NC 27609
NC License Number C-1554

PROJECT REFERENCE NO. R-2915C	SHEET NO. 9
ROADWAY DESIGN ENGINEER	HYDRAULICS ENGINEER
9/8/2016 SEAL 25523 DocSigned by James A. Bind 9/11/2016	9/11/2016
DOCUMENT NOT CONSIDERED FINAL UNLESS ALL SIGNATURES COMPLETED	

NAD 83
CORS

MATCH TO SHEET 8 -L- STA. 316+00.00

MATCH TO SHEET 10 -L- STA. 330+00.00



-Y6-
PI Sta 11+29.67
Δ = 27° 27' 20.2" (RT)
D = 44' 04' 25.2"
L = 62.29'
T = 31.76'
R = 130.00'
SE = EXIST.

-Y6-
PI Sta 13+89.57
Δ = 95° 02' 44.9" (RT)
D = 27' 17' 01.3"
L = 348.36'
T = 229.36'
R = 210.00'
SE = .06

SEE SHEET 36 FOR -Y5- PROFILE
SEE SHEET 28 FOR -L- PROFILE
SEE SHEET 2B-8 FOR INTERSECTION DETAIL
SEE SHEET 2B-9 FOR INTERSECTION DETAIL
SEE SHEETS W-1 TO W-9 FOR WALL PLANS

DRIVEWAY TURNOUTS ARE 10' RADII UNLESS SHOWN OTHERWISE.

REVISIONS

29-AUG-2016 14:40
R:\Roadway\Projects\2915C_rdy_PSH09.dgn
3:33 PM