

8/17/99

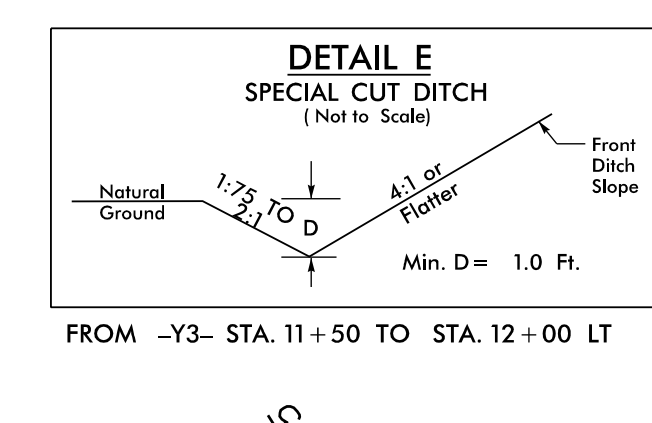
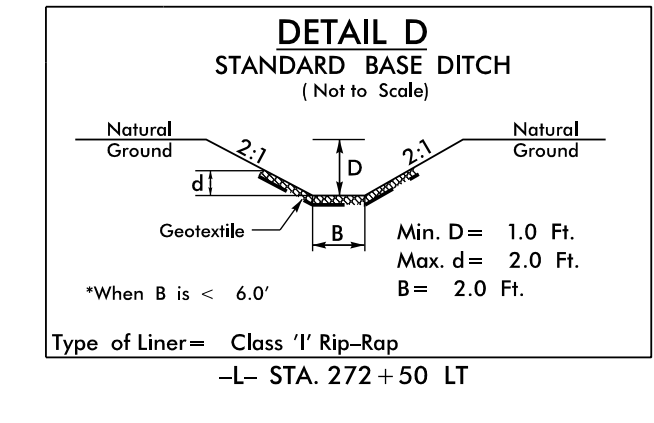
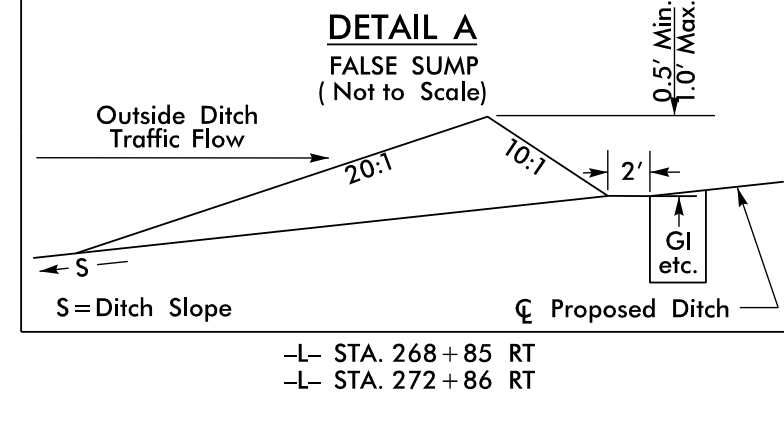
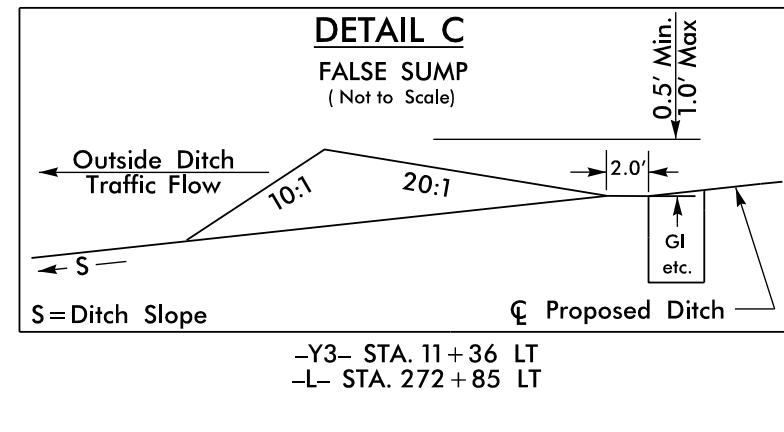
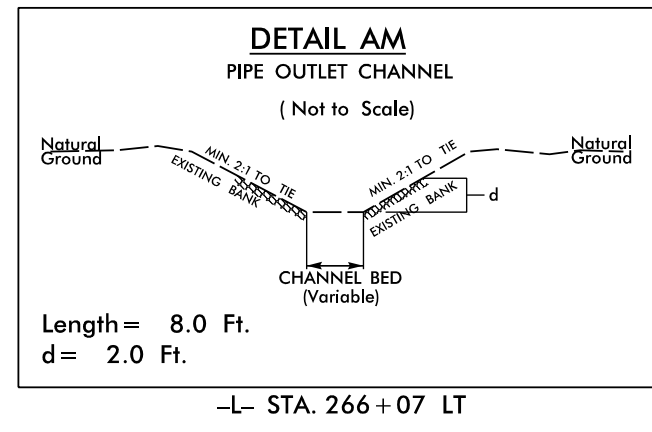
LOCHNER

H. W. LOCHNER, INC.
2840 PLAZA PLACE, SUITE 202
RALEIGH, NC 27612
(919)571-7111
343 E. SIX FORKS ROAD, SUITE 200
RALEIGH, NC 27609

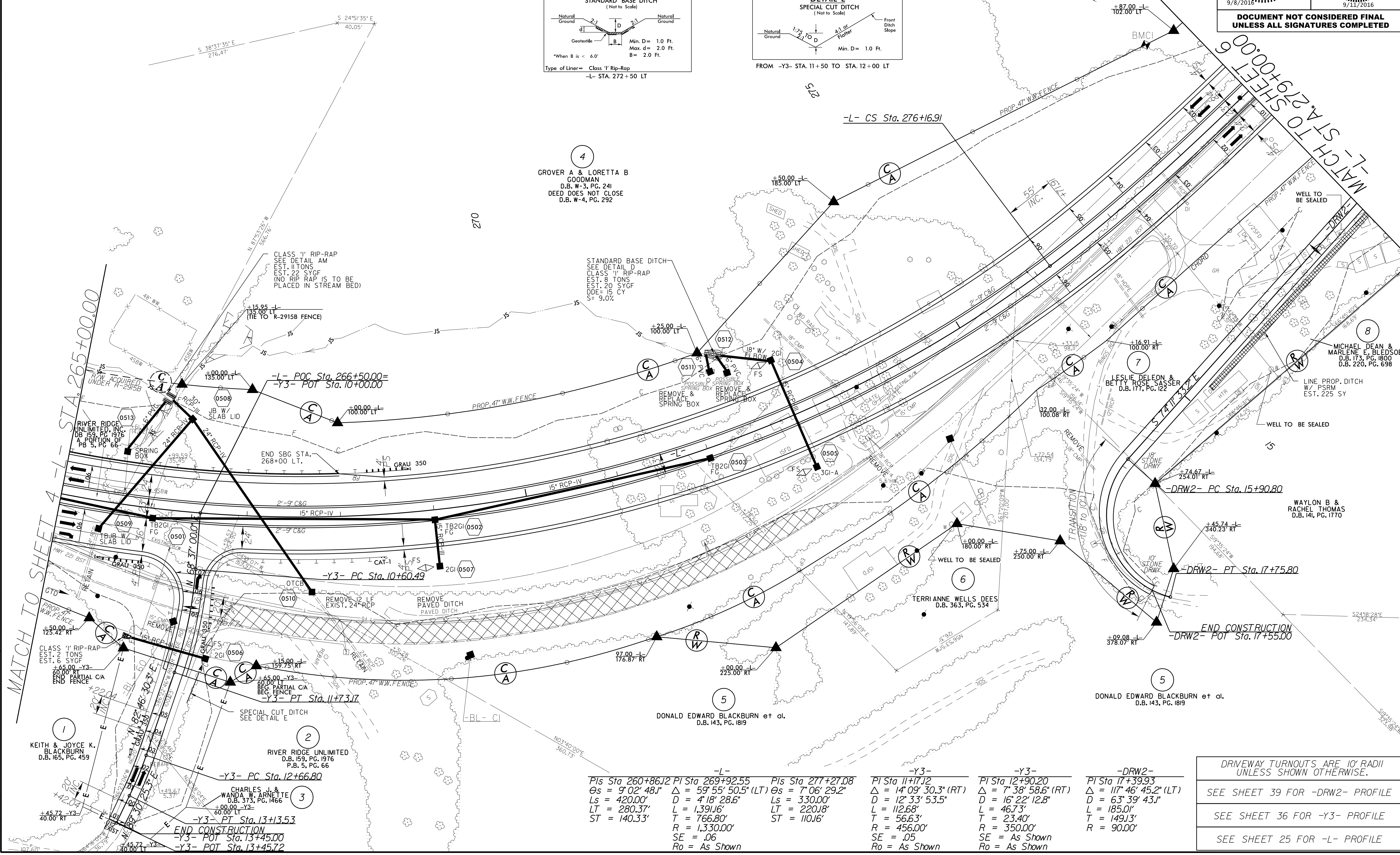
NC License
Number F-0159
NC License
Number C-1554

PROJECT REFERENCE NO. <i>R-2915C</i>	SHEET NO. 5
ROADWAY DESIGN ENGINEER	HYDRAULICS ENGINEER

**DOCUMENT NOT CONSIDERED FINAL
UNLESS ALL SIGNATURES COMPLETED**



REVISIONS



-L-	-Y3-	-Y3-	-DRW2-
Pls Sta 260+86.12 PI Sta 269+92.55 Os = 9° 02' 48.1" Δ = 59° 55' 50.5" (LT) Os = 7° 06' 29.2" Ls = 420.00' D = 4' 18" 28.6" Ls = 330.00' LT = 280.37' L = 1,391.16' LT = 220.18' ST = 140.33' T = 766.80' ST = 110.16'	PI Sta 11+17.12 Os = 14° 09' 30.3" (RT) Δ = 12° 33' 53.5" D = 12' 33" 53.5" L = 112.68' T = 56.63' R = 456.00' SE = .05 Ro = As Shown	PI Sta 12+90.20 Os = 7° 38' 58.6" (RT) Δ = 16° 22' 12.8" D = 16' 22" 12.8" L = 46.73' T = 23.40' R = 350.00' SE = As Shown Ro = As Shown	PI Sta 17+39.93 Os = 117° 46' 45.2" (LT) Δ = 63° 39' 43.1" D = 63' 39" 43.1" L = 185.01' T = 149.13' R = 90.00'

DRIVEWAY TURNOUTS ARE 10' RADII UNLESS SHOWN OTHERWISE.

SEE SHEET 39 FOR -DRW2- PROFILE

SEE SHEET 36 FOR -Y3- PROFILE

SEE SHEET 25 FOR -L- PROFILE

29-AUG-2016 13:10
R:\Roadway\Projects\152915C_rdy_PSH05.dgn
3:33 PM