

LOCHNER
 H. W. LOCHNER, INC.
 2840 PLAZA PLACE, SUITE 202
 RALEIGH, NC 27612
 (919)571-7111
 NC License Number F-0159

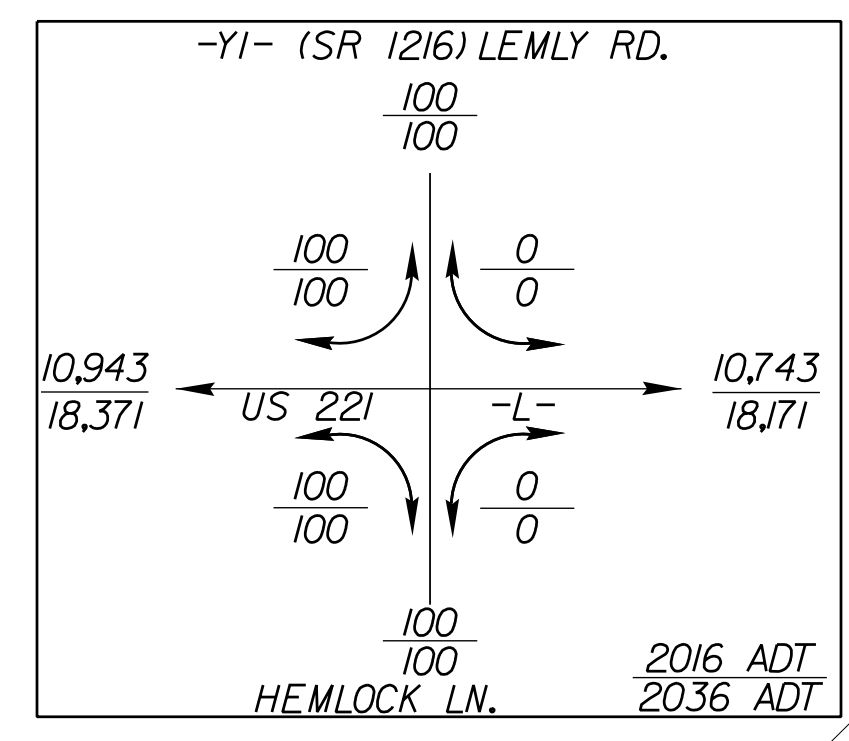
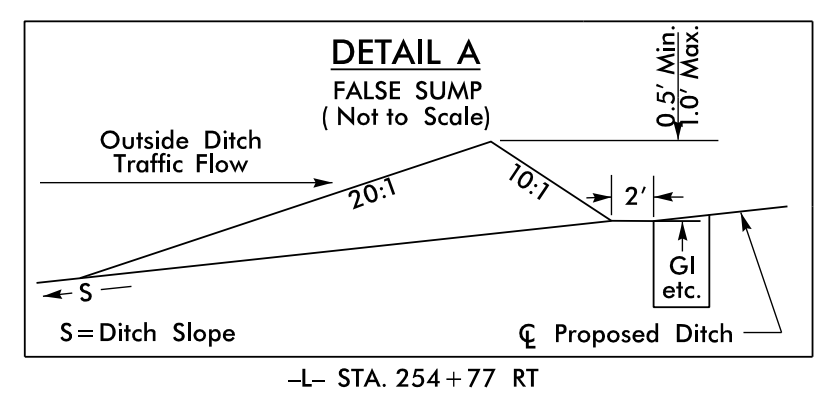
HNTB
 343 E. SIX FORKS ROAD, SUITE 200
 RALEIGH, NC 27609
 NC License Number C-1554

9/1/2016

PROJECT REFERENCE NO. R-2915C	SHEET NO. 4
ROADWAY DESIGN ENGINEER	HYDRAULICS ENGINEER
DOCUMENT NOT CONSIDERED FINAL UNLESS ALL SIGNATURES COMPLETED	

Pls Sta 260+86.12 PI Sta 269+92.55 Pls Sta 277+27.08
 Δs = 9° 02' 48.1" Δ = 59° 55' 50.5" (LT) Δs = 7° 06' 29.2"
 Ls = 420.00' D = 4' 18" 28.6' Ls = 330.00'
 LT = 280.37' L = 139.16' LT = 220.18'
 ST = 140.33' T = 766.80' ST = 110.16'
 R = 1,330.00' SE = .06
 Ro = As Shown

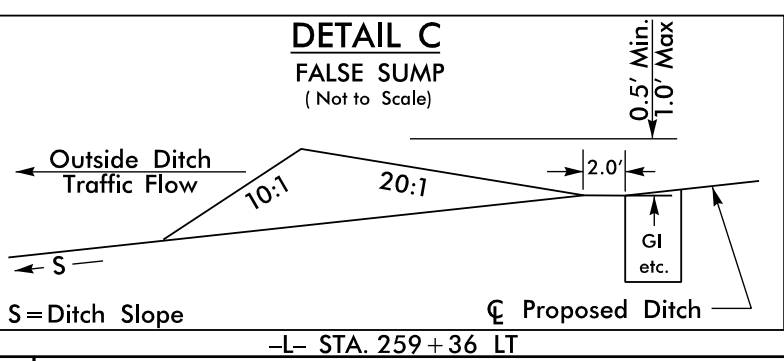
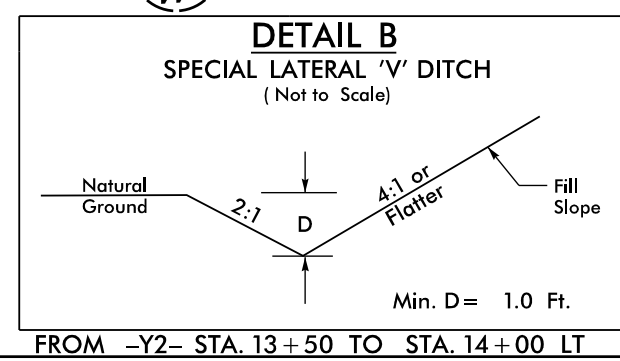
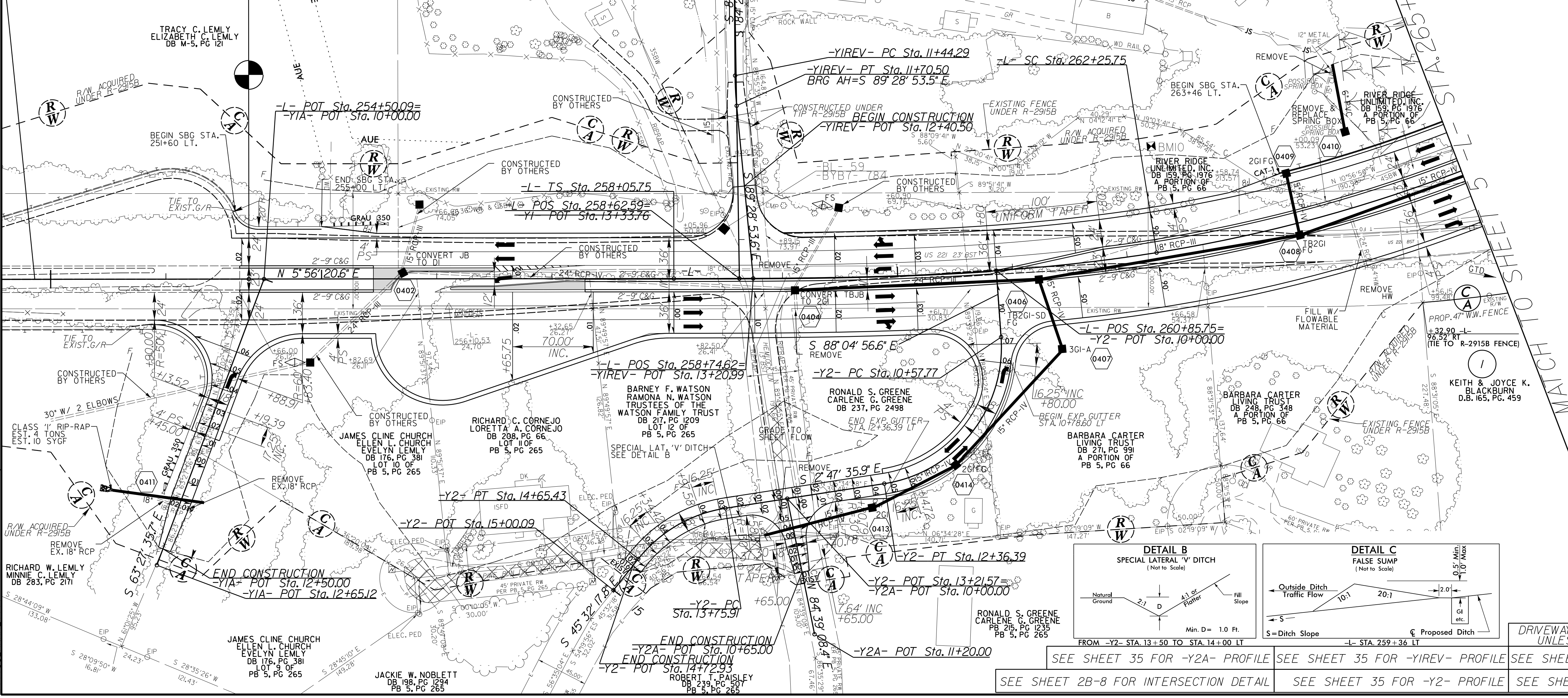
-Y2- -Y2-
 PI Sta 11+68.28 PI Sta 14+22.87
 Δ = 85° 17' 20.7" (RT) Δ = 42° 44' 42.0" (LT)
 D = 47' 44" 47.3" D = 47' 44" 47.3"
 L = 178.63' L = 89.52'
 T = 110.52' R = 46.96'
 R = 120.00' R = 120.00'
 SE = .06 SE = .04
 Ro = As Shown Ro = As Shown



END TIP PROJECT R-2915B LB =
 -L- POT Sta. 251+72.02
 BEGIN TIP PROJECT R-2915C LA
 -L- POT Sta. 254+36.94

NAD 83
 CORS

BEGIN CONSTRUCTION R-2915C
 -L- POT Sta. 249+86.19



DRIVEWAY TURNOUTS ARE 10' RADII
 UNLESS SHOWN OTHERWISE.

SEE SHEET 35 FOR -Y2A- PROFILE SEE SHEET 35 FOR -Y1REV- PROFILE SEE SHEET 35 FOR -Y1A- PROFILE
 SEE SHEET 28-8 FOR INTERSECTION DETAIL SEE SHEET 35 FOR -Y1Y2- PROFILE SEE SHEET 24 FOR -L- PROFILE

REVISIONS

22-AUG-2016 16:48
 R:\Roadway\2915C\rdy_PSI\04.dgn
 R:\Roadway\2915C\rdy_PSI\04.dgn
 R:\Roadway\2915C\rdy_PSI\04.dgn