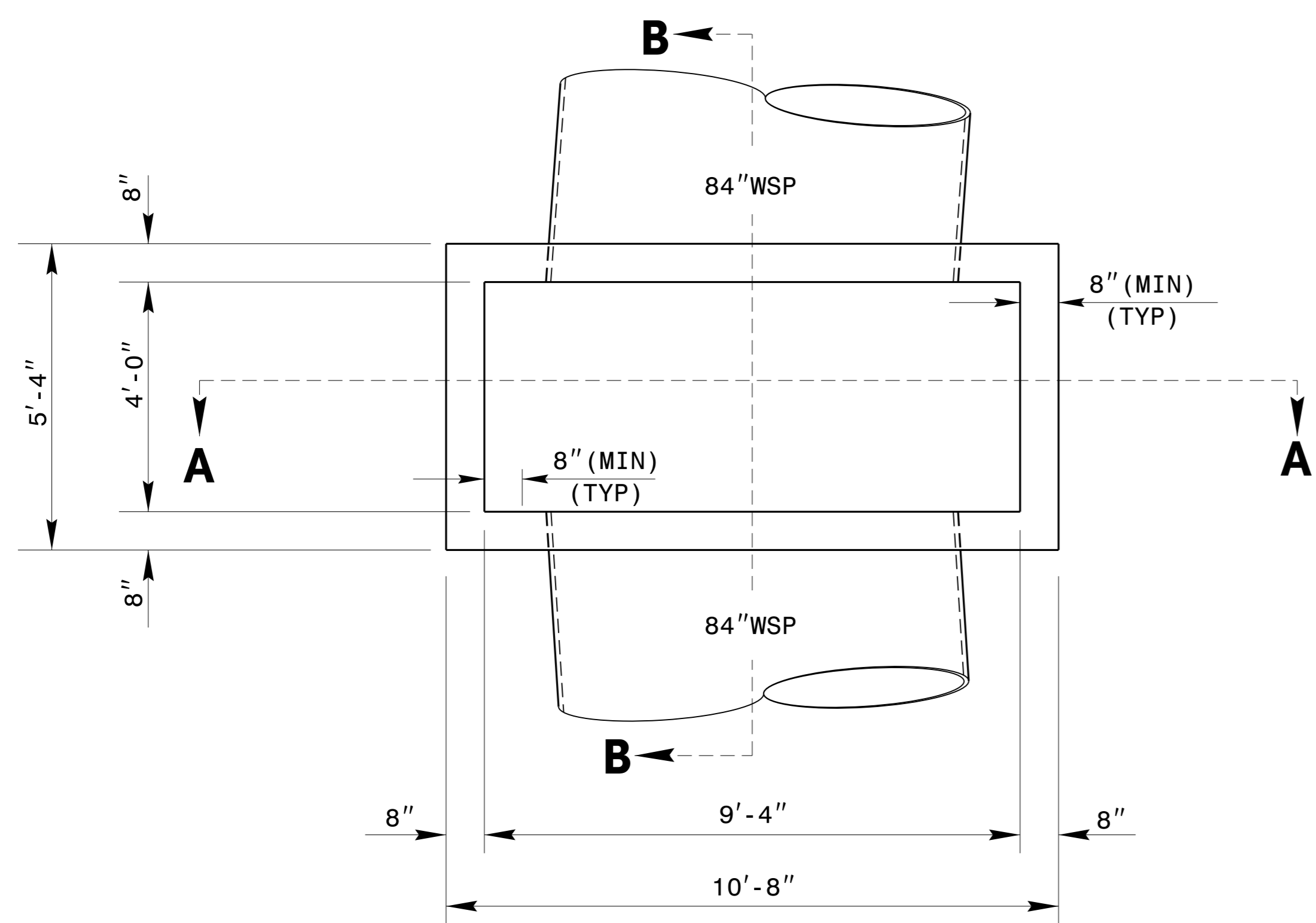
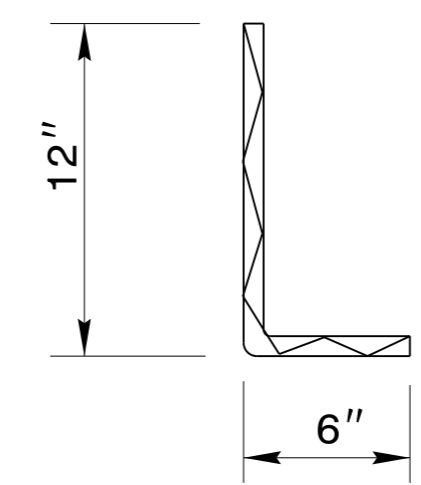


**GENERAL NOTES:**  
 USE CLASS "B" CONCRETE THROUGHOUT.  
 OPTIONAL CONSTRUCTION - MONOLITHIC POUR, 2" KEYWAY, OR #4 BAR DOWELS AT 12" CENTERS AS DIRECTED BY THE ENGINEER.  
 USE FORMS FOR THE CONSTRUCTION OF THE BOTTOM SLAB, SEE STD. DRAWING 840.00.  
 CHAMFER ALL EXPOSED CORNERS 1".  
 2" MINIMUM CONCRETE COVERAGE ON ALL REBAR.  
 "Z" BAR TO BE USED TO REINFORCE OPENING AROUND 84 INCH WSP.  
 HEIGHT DIMENSIONS MAY BE ADJUSTED DOWN FOR SMALLER PIPES AS DIRECTED BY THE ENGINEER.

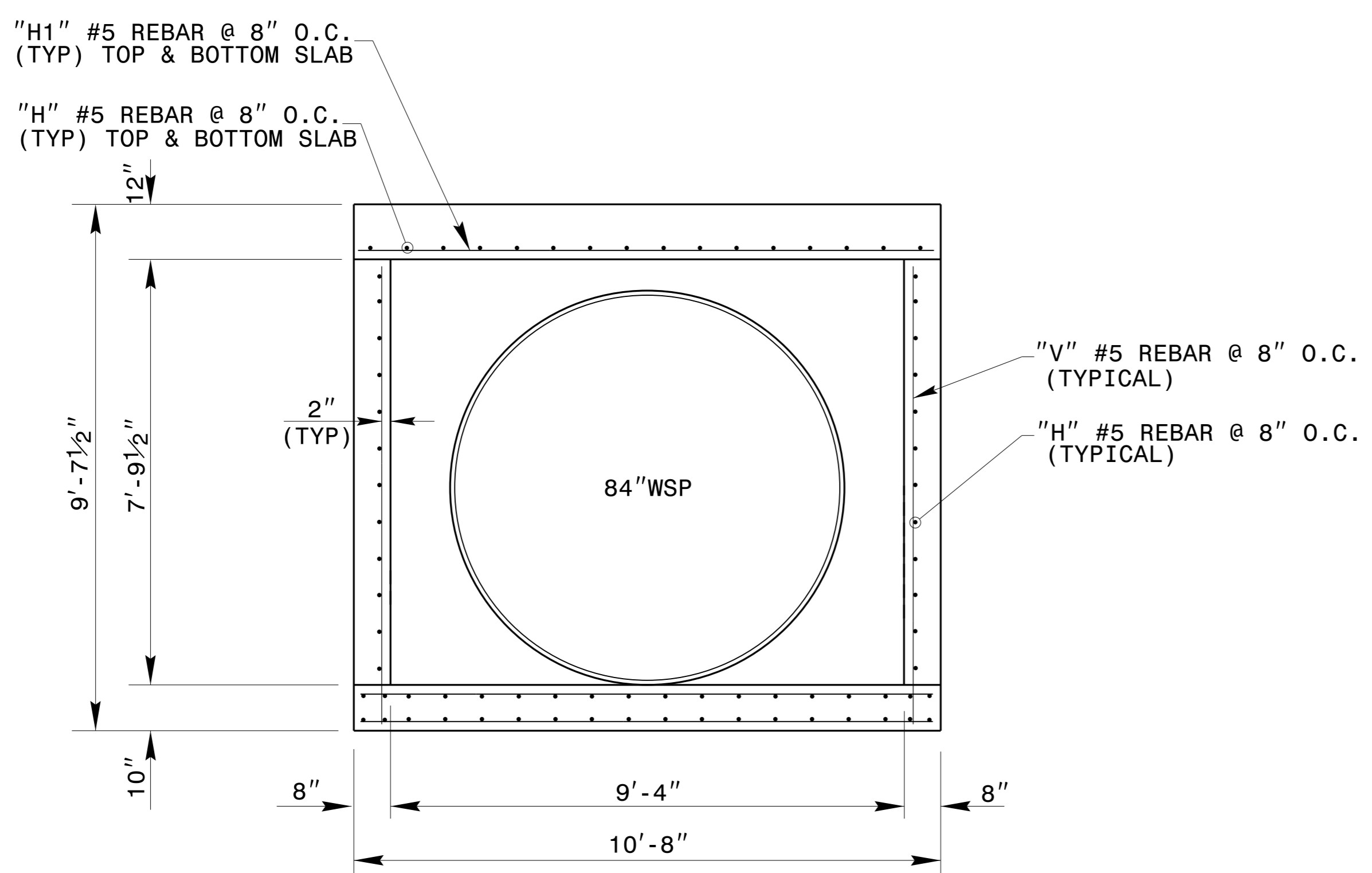


**PLAN VIEW**

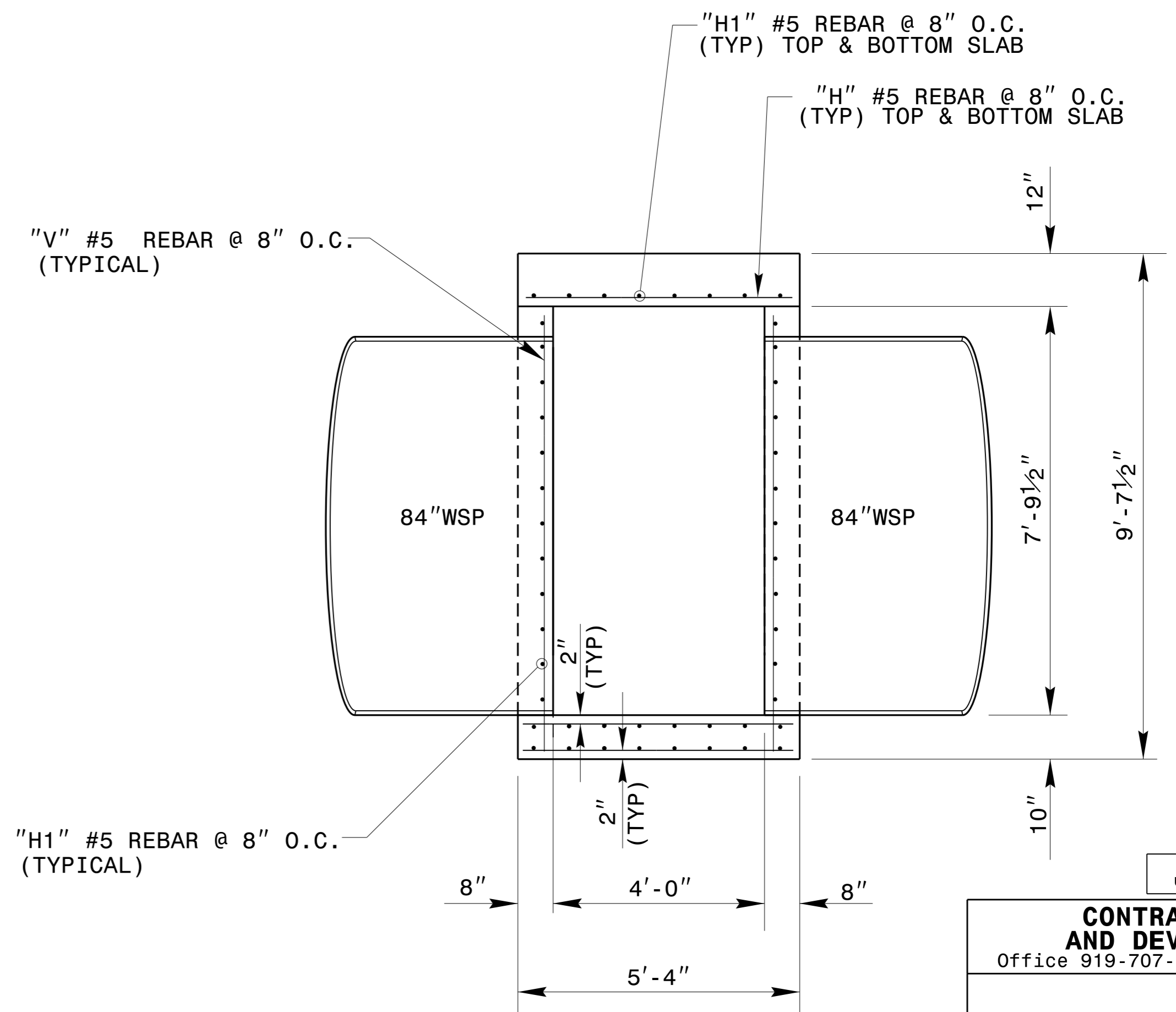


**DOWEL**

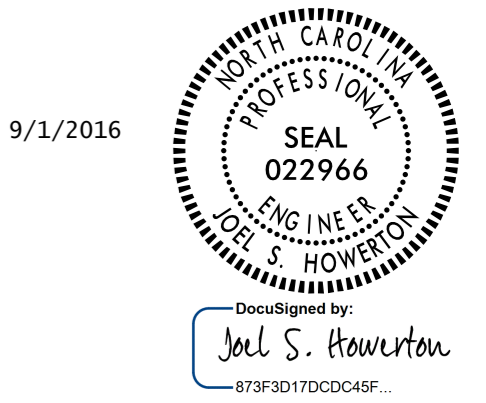
BILL OF MATERIALS				
BAR	NO.	SIZE	LENGTH	WEIGHT
H	80	#5	5'-0"	417
H1	48	#5	10'-4"	517
V	48	#5	8'-5"	421
Z	7	#5	4'-0"	29
TOTAL REINF. STEEL (LBS.)				1416
TOTAL CONC. (CU. YDS.)				9.2
* NO DEDUCTION HAS BEEN MADE FOR PIPES				



**SECTION A-A**



**SECTION B-B**



9/1/2016

DOCUMENT NOT CONSIDERED FINAL UNLESS ALL SIGNATURES COMPLETED

**CONTRACT STANDARDS AND DEVELOPMENT UNIT**  
 Office 919-707-6950 FAX 919-250-4119

**SPECIAL JUNCTION BOX**

ORIGINAL BY: nbritt DATE: 05/07/08  
 MODIFIED BY: kkempf DATE: 8/17/12  
 CHECKED BY: DATE:  
 FILE SPEC.: special details/kkempf/english/b4497\_jb 84in.dgn

5/14/99  
 C:\TIME\DESIGN\CONCRETE\PROJECTS\CONCRETE\USER\NAME