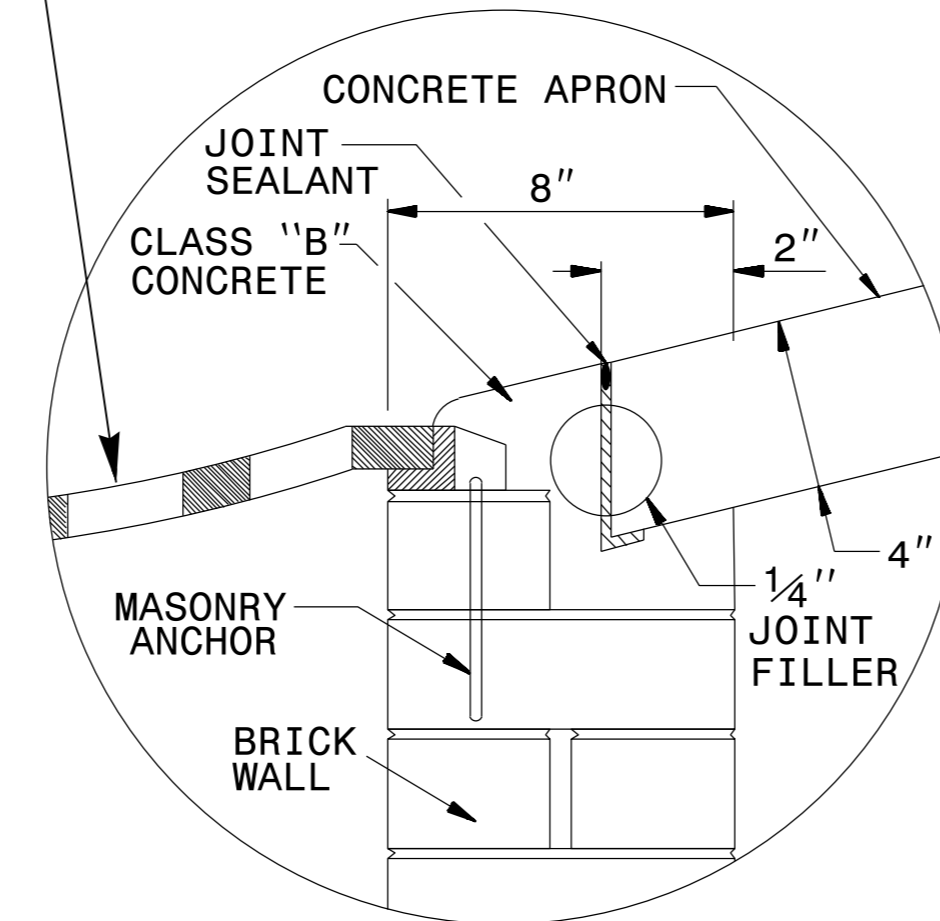


SEE PLANS FOR FRAME & GRATE TYPE



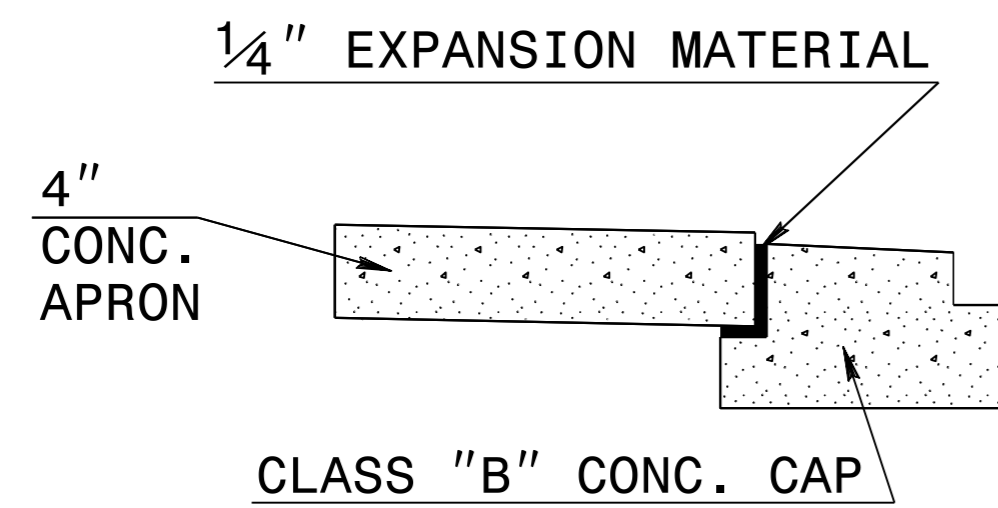
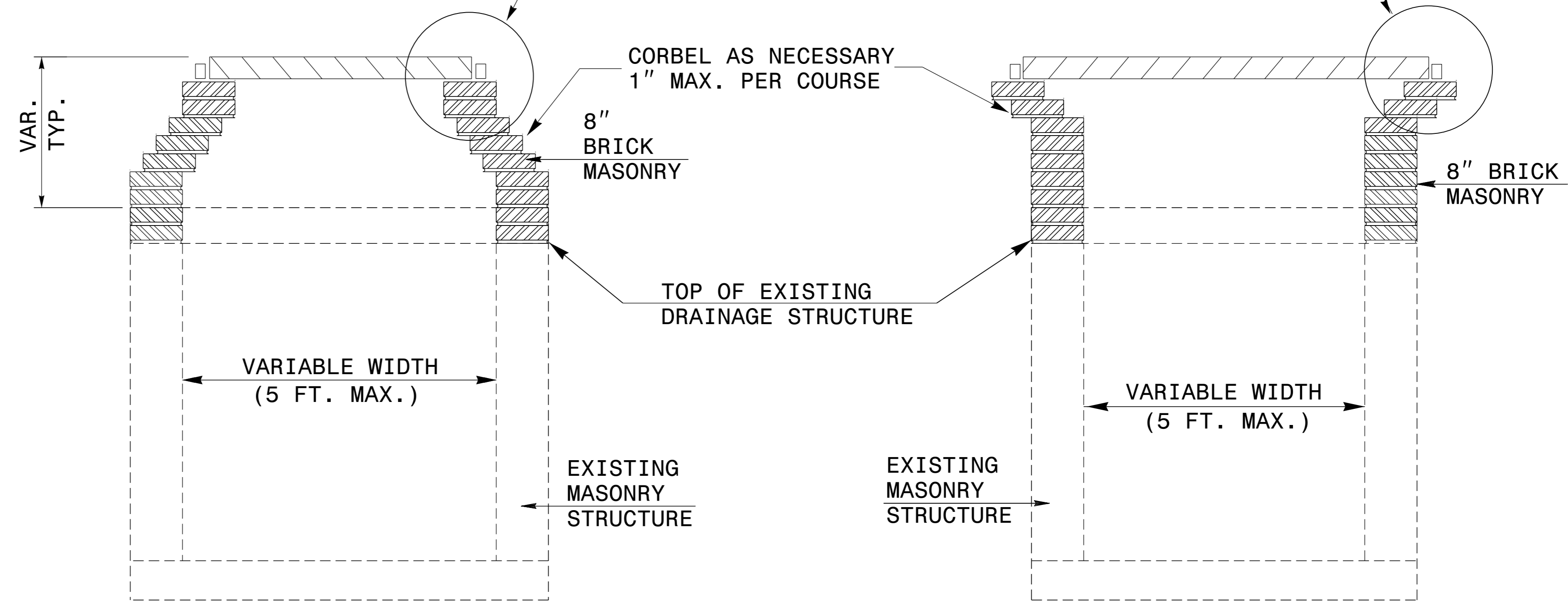
GRATE PLACEMENT DETAIL

FOR GRATED DROP INLETS

GENERAL NOTES:

- CONSTRUCT IN ACCORDANCE WITH SECTION 859 OF THE STANDARD SPECIFICATIONS.
- USE CLASS AA CONCRETE.
- THE DIMENSIONS FOR THE EXISTING BOXES ARE APPROXIMATE AND MAY VARY SLIGHTLY.
- JUMBO CONCRETE BRICK WILL BE PERMITTED. 4" CONCRETE BRICK OR 8" SOLID CONCRETE BLOCK ARE REQUIRED FOR DRAINAGE STRUCTURE.
- INCLUDE CONCRETE APRON IN UNIT PRICE BID PER EACH, CONVERT EXISTING STRUCTURE TO 2GI AS NEEDED.
- SPECIAL DESIGN IS REQUIRED FOR USE UNDER PAVEMENT.
- CONFIRM DIMENSIONS ON EACH INDIVIDUAL FRAME & GRATE PROPOSAL.
- SEE STD. DRAWING 840.25 FOR MASONRY ANCHORAGE.
- SEE STD. DRAWING 840.17 FOR CONCRETE APRON.

SEE PLANS FOR 2GI FRAME & GRATE TYPE
SEE DETAILS ABOVE FOR METHOD OF GRATE PLACEMENT.



EXPANSION JOINT DETAIL

TYPICAL SECTION

TYPICAL SECTION

9/1/2016



CONTRACT STANDARDS AND DEVELOPMENT UNIT
Office 919-707-6950 FAX 919-250-4119

DETAIL TO CONVERT EXISTING TBJB TO TB2-GI

ORIGINAL BY: T.S.S. DATE: NOV. 1997
 MODIFIED BY: T.S.S. DATE: FEB. 2000
 CHECKED BY: DATE:
 FILE SPEC.: sjhowerton/Convert TBJB to TB2GI

\$\$\$\$\$\$
 TIME \$\$\$\$\$\$
 Y- \$\$\$\$\$\$
 X- \$\$\$\$\$\$
 C- \$\$\$\$\$\$
 NAME \$\$\$\$\$\$
 USER \$\$\$\$\$\$
 \$\$\$\$\$\$