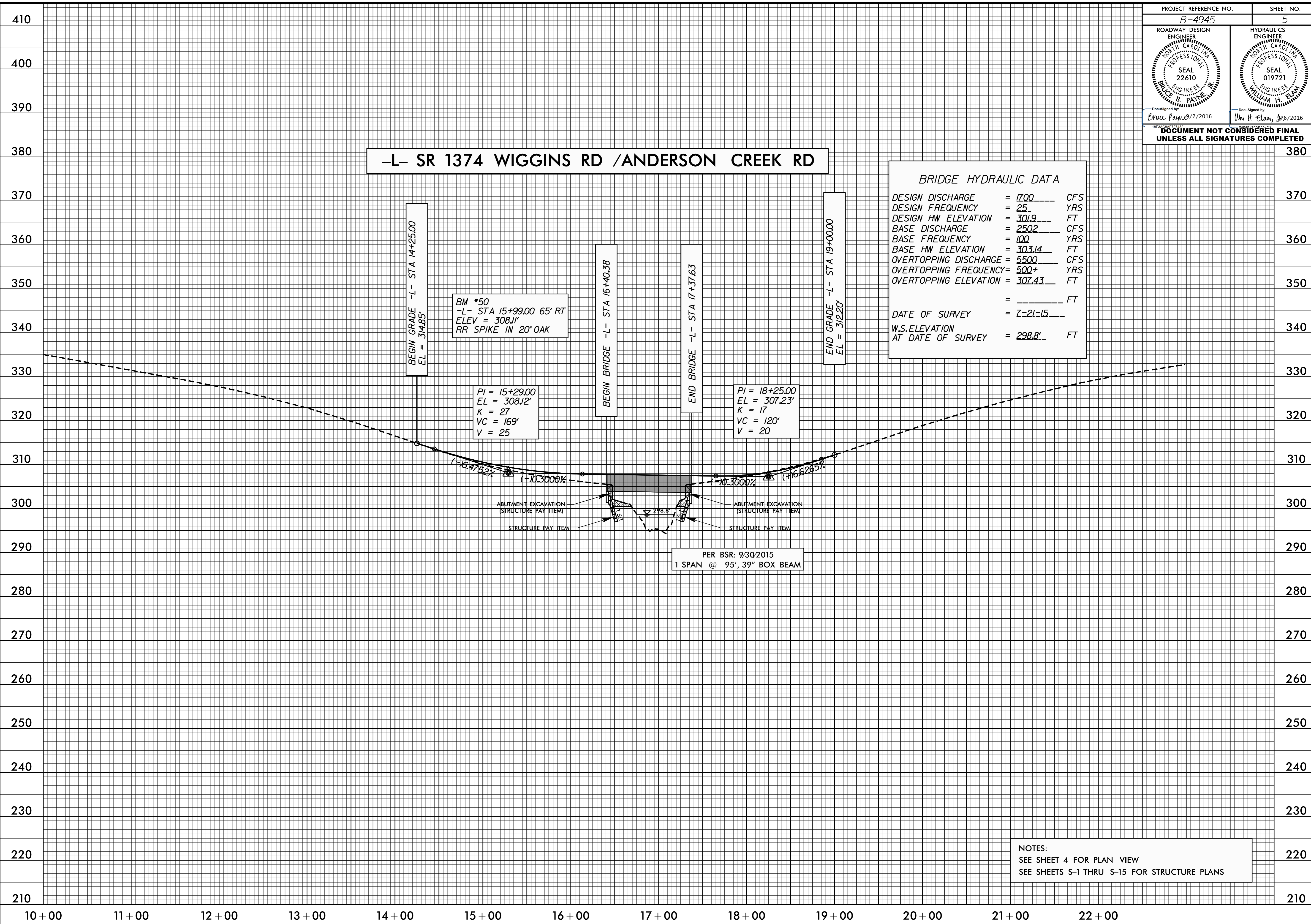


-L- SR 1374 WIGGINS RD /ANDERSON CREEK RD

| BRIDGE HYDRAULIC DATA | |
|-------------------------------------|-------------|
| DESIGN DISCHARGE | = 1700 CFS |
| DESIGN FREQUENCY | = 25 YRS |
| DESIGN HW ELEVATION | = 301.9 FT |
| BASE DISCHARGE | = 2502 CFS |
| BASE FREQUENCY | = 100 YRS |
| BASE HW ELEVATION | = 303.14 FT |
| OVERTOPPING DISCHARGE | = 5500 CFS |
| OVERTOPPING FREQUENCY | = 500+ YRS |
| OVERTOPPING ELEVATION | = 307.43 FT |
| | = _____ FT |
| DATE OF SURVEY | = 7-21-15 |
| W.S. ELEVATION AT DATE OF SURVEY | = 298.8 FT |



NOTES:
SEE SHEET 4 FOR PLAN VIEW
SEE SHEETS S-1 THRU S-15 FOR STRUCTURE PLANS

5/14/99
02 SEP 2016 09:00:49:45 .Rdy_pfl.pst05.dgn