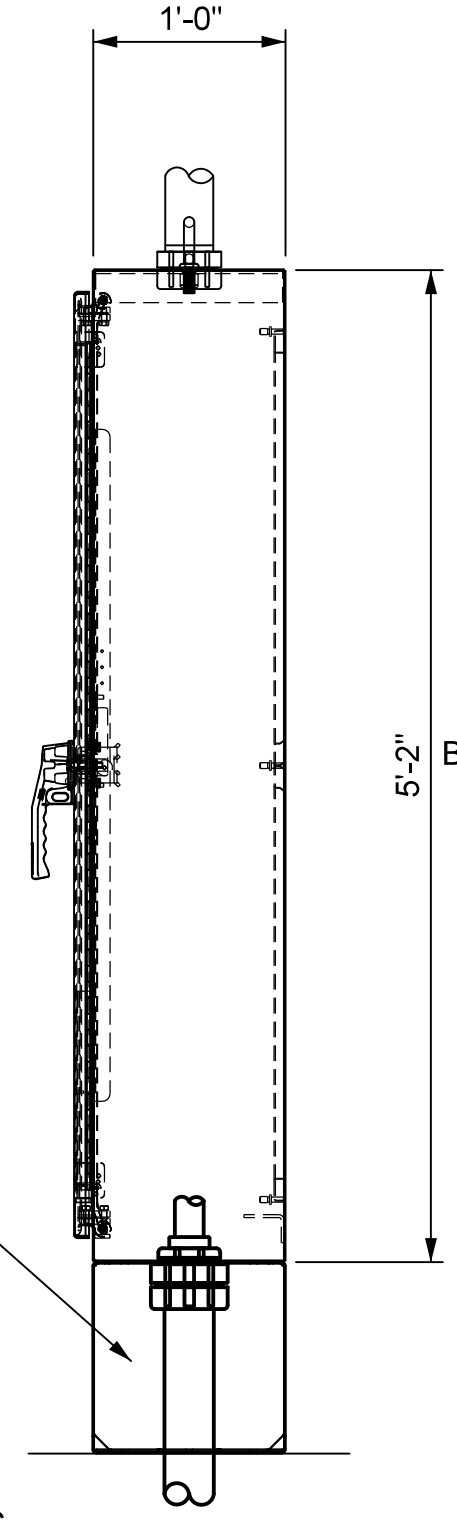
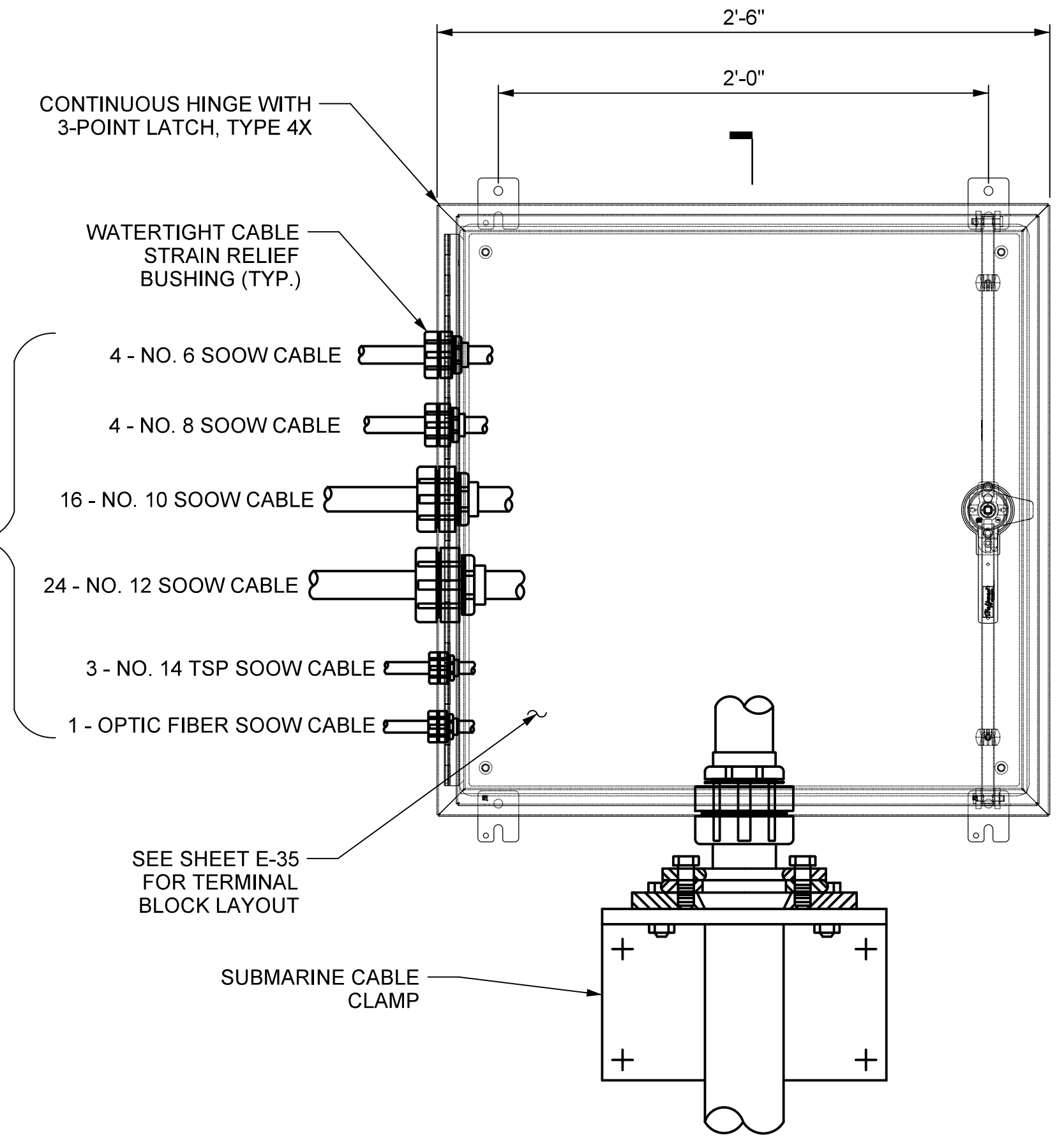


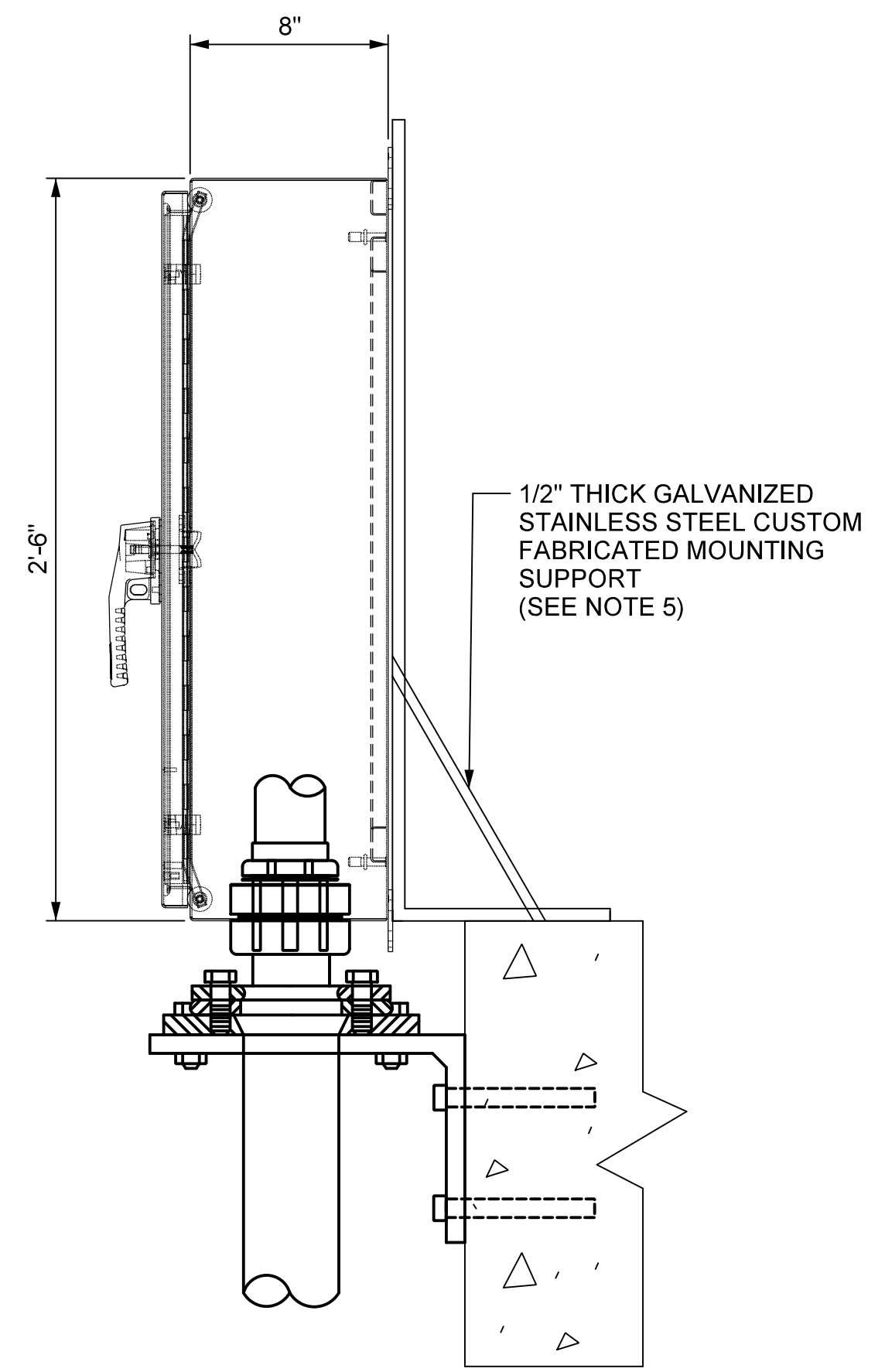
**MAIN TERMINAL CABINET**  
SCALE: 1" = 1'-0"



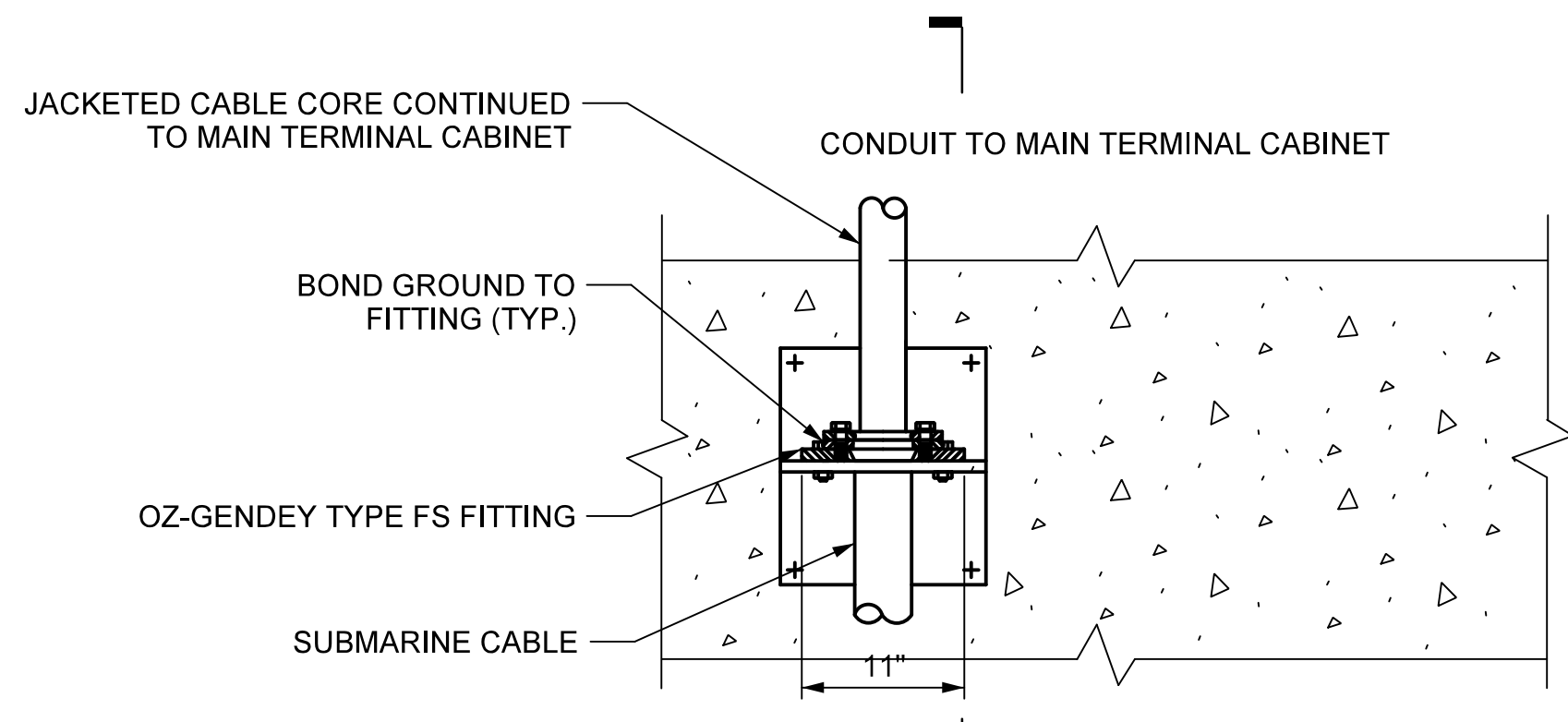
**SECTION A-A**  
SCALE: 1" = 1'-0"



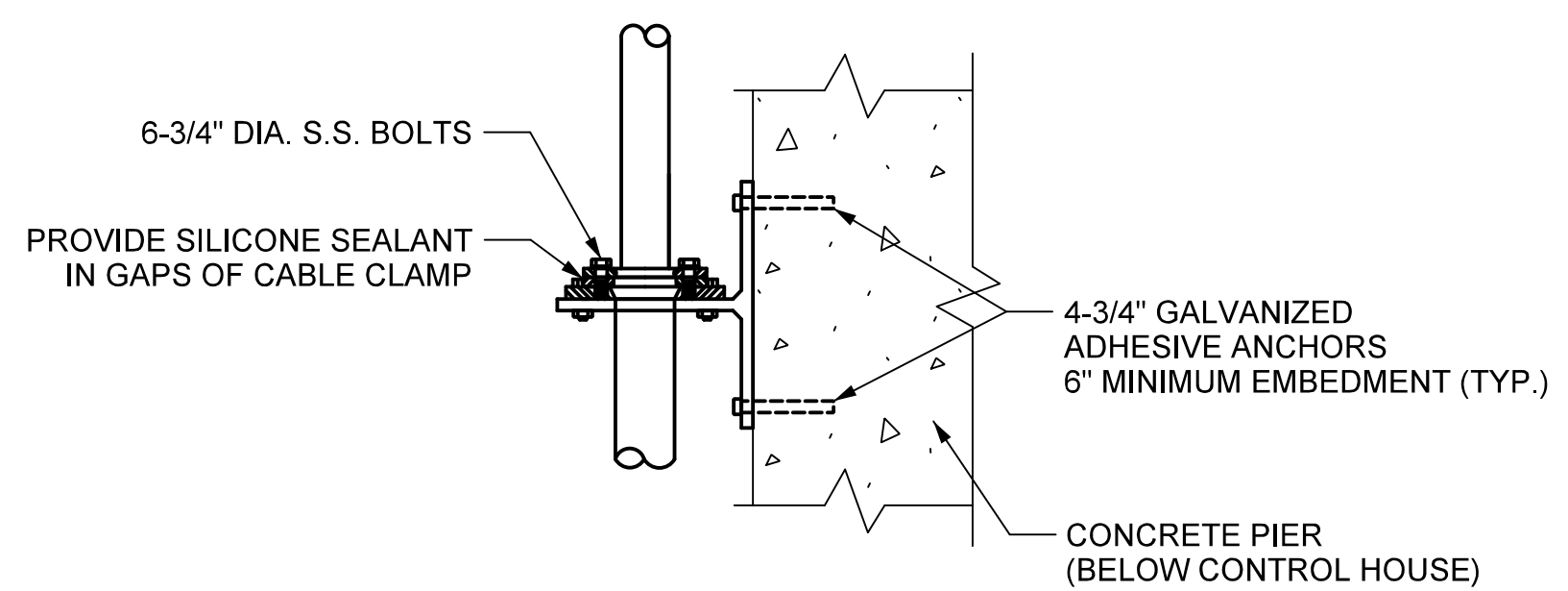
**PIVOT PIER FIXED TERMINAL CABINET**  
SCALE: 2" = 1'-0"



**SECTION C-C**  
SCALE: 2" = 1'-0"



**TYPICAL SUBMARINE CABLE CLAMP**  
SCALE: 1" = 1'-0"



**SECTION B-B**  
SCALE: 1" = 1'-0"

**NOTES:**

1. THE MAIN TERMINAL CABINET SHALL BE A NEMA 12 TYPE HOFFMAN ENCLOSURE CATALOG NUMBER A64H6012SS6LP3PT OR APPROVED EQUAL.
2. THE SUBMARINE CABLE SUPPORT SHALL BE OZ-GEDNEY TYPE FS FITTING OR APPROVED EQUAL.
3. THE PIVOT PIER FIXED AND MOVABLE TERMINAL CABINETS SHALL BE TYPE 4X HOFFMAN ENCLOSURE CATALOG NUMBER A30H3008SS6LP3PT OR APPROVED EQUAL.
4. ALL DRAG CABLES BETWEEN THE FIXED AND MOVABLE PIVOT PIER TERMINAL CABINETS SHALL BE SOOW TYPE CABLE AND LONG ENOUGH TO BE CAPABLE OF SWINGING 180°.
5. CONTRACTOR SHALL CUSTOM FABRICATE THE PIVOT PIER FIXED TERMINAL CABINET SUCH THAT THE ENCLOSURE IS WELL SUPPORTED.

PROJECT NO. B-5936  
TYRRELL COUNTY  
BRIDGE NO: 7

STATE OF NORTH CAROLINA  
DEPARTMENT OF TRANSPORTATION  
RALEIGH

**SUBMARINE CABLE SUPPORT DETAILS**

**ALLIGATOR RIVER SWING SPAN**

DocuSigned by:  
*Scott Reynolds*  
9/14/2016

SEAL  
036065  
SCOTT A. REYNOLDS  
REGISTERED PROFESSIONAL ENGINEER

**HH Hardesty & Hanover**  
engineering that moves you

DRAWN BY: \_QIV DATE: 8/8/2016  
CHECKED BY: \_MJT DATE: 8/8/2016  
DESIGN ENGINEER OF RECORD: \_CHS DATE: 8/8/2016

DWG NUMBER	TOTAL DWGS
50	90

DOCUMENT NOT CONSIDERED FINAL UNLESS ALL SIGNATURES COMPLETED

REVISIONS						SHEET NO.
NO	BY	DATE	NO	BY	DATE	E-34
1			3			TOTAL SHEETS
2			4			51